

# OmniPreSense OPS241-A Short-Range Radar

OmniPreSense's OPS241-A is complete short-range radar (SRR) solution providing motion detection, speed, and direction reporting. All radar signal processing is done on board and a simple API reports the processed data. Flexible control over the reporting format, sample rate, and module power levels are provided.

The OPS241-A module can be connected to any Smart USB host (Raspberry Pi, Android device supporting OTG, PC or Mac) to enable an IoT sensor. Depending on the USB host's ability, further processing and/or communication to the cloud can be performed for further data analysis or networked action.

## Features

- 1-25m (3-80') detection range
- Speed reporting to 348mph, 0.5% accurate
- Direction reporting (Inbound/Outbound)
- Wide 78° beam width (-3 dB)
- USB interface
- Simple API control, 1-44Hz report rate
- Industrial temp operation (-40 to +85°C)
- 1.4W Active power, 0.6W Idle power
- Small form factor 53 x 59 x 12 mm, 11g (sensor only)

## Applications

- Traffic Monitoring
- IoT Sensor
- Drone/Robotics

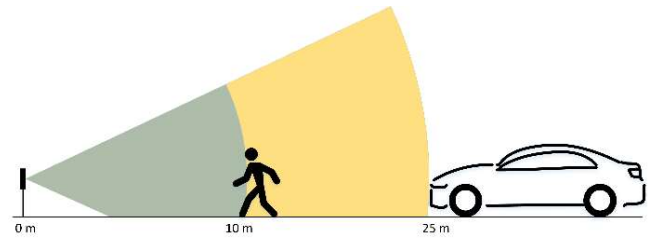
## Functionality

- Traffic Monitoring
- Speed/Direction Reporting
- Presence Detection
- Collision Avoidance

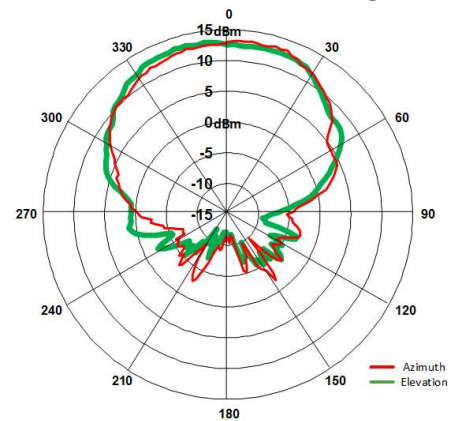
[www.omnipresense.com](http://www.omnipresense.com)



OPS241-A Sensor



OPS241-A Detection Range



Antenna Pattern

## Order Part Number

OPS241-A-CW-RP radar sensor module

OPS241-A-CW-ENC enclosure

OPS-PB-001-G

## X-ON Electronics

Largest Supplier of Electrical and Electronic Components

*Click to view similar products for [Distance Sensor Modules](#) category:*

*Click to view products by [OmniPreSense](#) manufacturer:*

Other Similar products are found below :

[FP-D-405-5-C-F](#) [1137](#) [ILM12F-D-520-1-C-F](#) [ILM12F-DOE-520-7-289-F](#) [LC-LMD-635-03-01-A](#) [LC-LMD-650-02-01-A](#) [LC-LMD-650-02-03-A](#) [LC-LMD-650-03-01-A](#) [LC-LMD-650-05-05-A](#) [LC-LMD-780-01-01-A](#) [LC-LMD-780-01-03-A](#) [LC-LMD-850-01-01-A](#) [LC-LMD-850-01-03-A](#) [FP-D-520-10-C-F](#) [FP-D-520-5-C-F](#) [FP-D-650-1-C-F](#) [FP-L-520-10-50-C](#) [SEN0238](#) [TR-ONE-AS](#) [FP-D-405-16-E-F](#) [FP-D-635-13-E-F](#) [FP-D-635-17-C-F](#) [FP-D-635-3-E-F](#) [FP-D-635-40-C-F](#) [FP-D-635-7-E-F](#) [FP-D-635-8-C-F](#) [FP-D-650-20-C-F-24](#) [FP-D-650-25-E-F](#) [FP-D-650-3-E-F](#) [FP-D-660-40-C-F](#) [FP-D-670-1-C-F](#) [FP-D-850-1-C-F](#) [FP-D-850-5-E-F](#) [FP-D-905-7-E-F](#) [FP-L-650-1-50-C](#) [FP-L-905-5-50-C](#) [SEN0085](#) [FP-D-650-1-C-F-24V](#) [FP-MV18-ST-660-20-30-F-STD](#) [ILM12F-D-635-1-C-F](#) [ILM12F-L-520-7-58-F](#) [ILM12F-L-635-7-58-F](#) [LC-LMD-635-02-03-A](#) [LC-LMD-635-03-03-A](#) [LC-LMD-650-01-01-A](#) [LC-LMD-650-05-01-A](#) [28995](#) [FP-D-520-1-C-F](#) [FP-D-635-1-C-F-24V](#) [FP-D-650-1D-C-F](#)