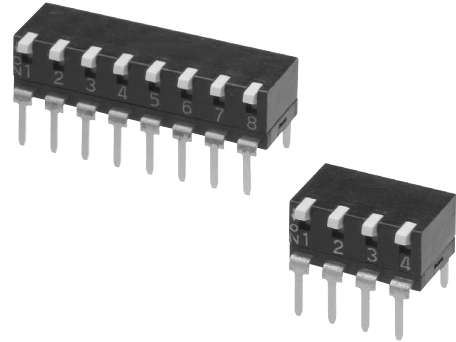


### Low-profile Piano DIP Switches with a Standard Pitch of 2.54 mm for Continuous Mounting.

- Low-profile design with a height of only 5 mm and a 2.54-mm pitch for continuous mounting.
- Models available with 2, 4, 6, 8, or 10 poles.
- Gold-plated twin contacts with slide-type self-cleaning mechanism for high reliability.

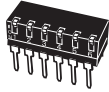
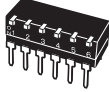


RoHS Compliant

#### Application

Mode setting of MPU  
Modem  
Controller of servo motor  
Coin changer  
Program controller

### List of Models

Type (color of actuator)		Short actuator (white)	Long actuator (white)
No. of poles	Quantity per tube		
2	95	<b>A6TR-2101</b>	<b>A6TR-2104</b>
4	47	<b>A6TR-4101</b>	<b>A6TR-4104</b>
6	31	<b>A6TR-6101</b>	<b>A6TR-6104</b>
8	23	<b>A6TR-8101</b>	<b>A6TR-8104</b>
10	18	<b>A6TR-0101</b>	<b>A6TR-0104</b>

Note: Orders must be made in integral multiples of the quantities given for each tube. Switches are not sold individually.

### Ratings/Characteristics

<b>Ratings</b>		25 mA at 24 VDC, 10 $\mu$ A (minimum current) at 3.5 VDC
<b>Ambient operating temperature</b>		-20 to +70°C at 60% max. (with no icing or condensation)
<b>Ambient operating humidity</b>		35% to 95% (at +5 to +35°C)
<b>Insulation resistance</b>		100 M $\Omega$ min. (at 250 VDC)
<b>Contact resistance</b>		200 m $\Omega$ max. (initial value)
<b>Dielectric strength</b>	<b>Between terminals</b>	500 VAC for 1 min
<b>Vibration resistance</b>	<b>Malfunction</b>	10 to 55 Hz, 1.5-mm double amplitude
<b>Shock resistance</b>	<b>Malfunction</b>	300 m/s <sup>2</sup> min.
<b>Durability</b>	<b>Electrical</b>	1,000 operations min.
<b>Operating force</b>		0.29 to 7.8 N {30 to 795 gf}
<b>Weight</b>		0.25 g (2 poles), 0.50 g (4 poles), 0.76 g (6 poles), 1.02 g (8 poles), 1.28 g (10 poles)

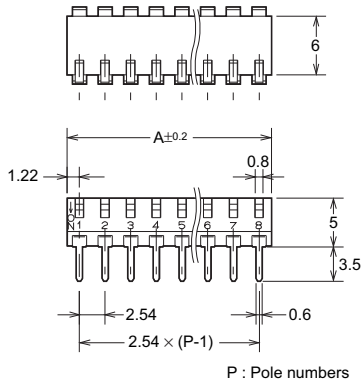
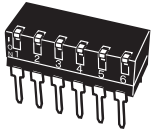
**Dimensions** (Unit: mm)

● Through hole terminal

Short actuator / Long actuator

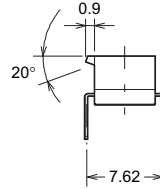
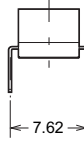
A6TR-□101

A6TR-□104

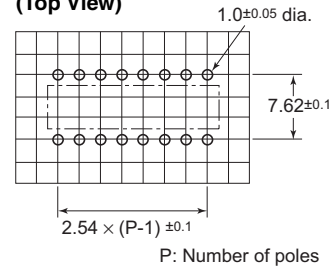


Short actuator

Long actuator



**PCB Dimensions (Top View)**

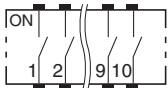


No. of poles	Model		Dimension A
	Short lever	Long lever	
2	A6TR-2101	A6TR-2104	4.98
4	A6TR-4101	A6TR-4104	10.06
6	A6TR-6101	A6TR-6104	15.14
8	A6TR-8101	A6TR-8104	20.22
10	A6TR-0101	A6TR-0104	25.30

Note: Unless otherwise specified, a tolerance of ±0.4 mm applies to all dimensions.

**Internal Connections**

Contact Form (Top View)



**Precautions**

Be sure to read the Safety precautions common to all DIP Switches for correct use.

- Application examples provided in this document are for reference only. In actual applications, confirm equipment functions and safety before using the product.
- Consult your OMRON representative before using the product under conditions which are not described in the manual or applying the product to nuclear control systems, railroad systems, aviation systems, vehicles, combustion systems, medical equipment, amusement machines, safety equipment, and other systems or equipment that may have a serious influence on lives and property if used improperly. Make sure that the ratings and performance characteristics of the product provide a margin of safety for the system or equipment, and be sure to provide the system or equipment with double safety mechanisms.

Note: Do not use this document to operate the Unit.

**OMRON Corporation**

ELECTRONIC AND MECHANICAL COMPONENTS COMPANY

Contact: [www.omron.com/ecb](http://www.omron.com/ecb)

Cat. No. A209-E1-01  
0812(0207)(O)

## X-ON Electronics

Largest Supplier of Electrical and Electronic Components

*Click to view similar products for [DIP Switches/SIP Switches](#) category:*

*Click to view products by [Omron](#) manufacturer:*

Other Similar products are found below :

[78M03S](#) [79B10T](#) [8136-475G4T](#) [G7G-1A2-CB-DC12](#) [H7CZL8AC100240](#) [A7SS-M](#) [A8CA-201](#) [DRR60016](#) [DRS4016](#) [1825008-1](#) [1825444-1](#) [25.350.0653.0](#) [SDA10H1BDA](#) [97R06ST](#) [A2C-2A5](#) [1825444-7](#) [ADE08SA04](#) [ADE12S04](#) [192960010](#) [2-1825058-8](#) [25.330.0653.1](#) [25.352.0353.0](#) [CXDRIVEV2X](#) [IKN0600000](#) [IKN0800000](#) [LA2-002-DC24](#) [DBS1003](#) [438872000](#) [DRD10CRAE04](#) [DSR02T](#) [DSS 208 N](#) [E2FMX2D1M1TGJ03M](#) [NDI10H](#) [219-9MSTP](#) [204-6ES](#) [EPM02FV](#) [701521596](#) [NDS08V](#) [76SB05](#) [79A10](#) [TD06H0SK1](#) [Z7.255.9027.0](#) [1-1825058-3](#) [1825428-4](#) [219-10LPSTF](#) [E3ZG6111D03M](#) [G4D212PUSTV2DC5](#) [NDI05H](#) [EPG301BT06](#) [206S0117](#)