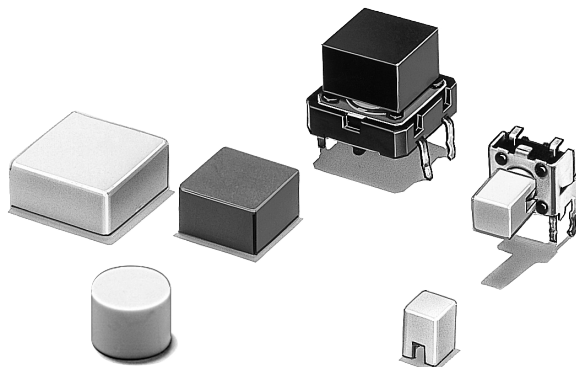


# Tactile Switch Key Top B32

**Key Top Designed Specially for Projected-plunger-type B3F, B3FS and B3W Switches**

- Available in a wide range of colors and sizes.
- RoHS Compliant.



## Ordering Information

For B3F, B3FS and B3W Switches

Color	6 x 6 mm Switches (B3F-1000, B3F-3000, B3F-6000, B3W-1000, B3FS)			12 x 12 mm Switches (B3F-4000, B3F-5000, B3W-4000)		
	4 x 4 mm Key Top	6 mm dia. Key Top	D-type Key Top	9 x 9 mm Key Top	12 x 12 mm Key Top	9.5-mm dia. Key Top
Ivory	B32-1000	B32-2000	B32-2100	B32-1200	B32-1300	B32-1600
Black	B32-1010	B32-2010	B32-2110	B32-1210	B32-1310	B32-1610
Orange	B32-1020	—	—	B32-1220	B32-1320	B32-1620
Yellow	B32-1030	—	—	B32-1230	B32-1330	B32-1630
Blue	B32-1040	—	—	B32-1240	B32-1340	—
White	B32-1060	—	—	B32-1260	B32-1360	—
Red	B32-1080	—	—	B32-1280	B32-1380	—

## Specifications

### ■ Characteristics

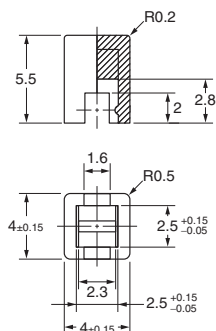
Ambient operating temperature	-25°C to 70°C (at 60% RH max.) with no icing or condensation
Ambient operating humidity	35% to 85% (at 5 to 35°C)

# Dimensions

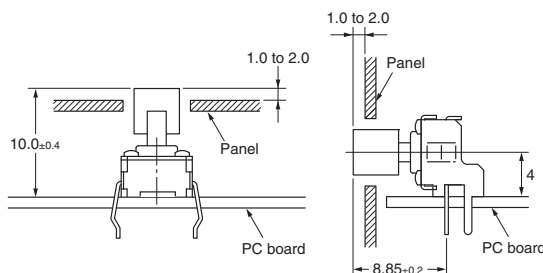
Note: Unless otherwise specified, all units are in millimeters and a tolerance of  $\pm 0.4$  mm applies to all dimensions.

## ■ For 6 x 6 mm Tactile Switch

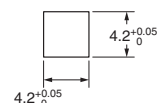
### B32-10□0



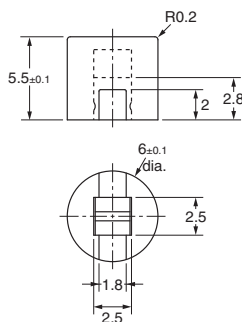
Reference Dimensions



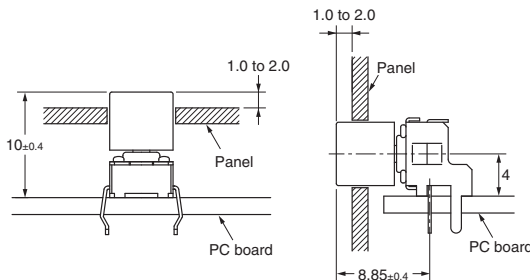
Panel Cutout



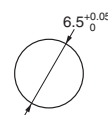
### B32-2000 B32-2010



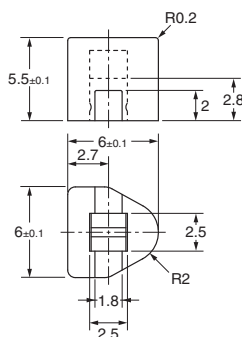
Reference Dimensions



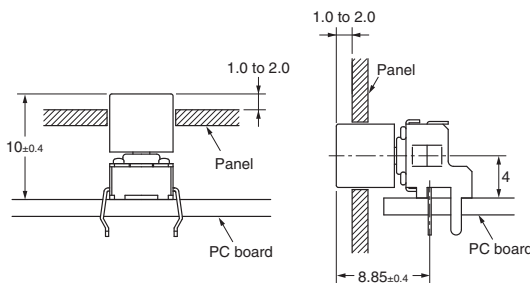
Panel Cutout



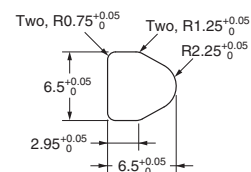
### B32-2100 B32-2110



Reference Dimensions

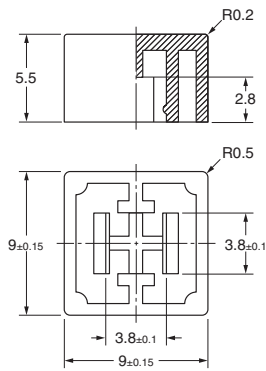


Panel Cutout

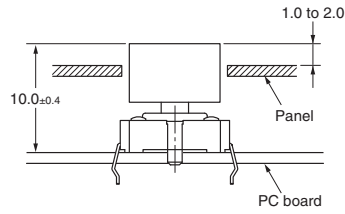


■ For 12 x 12 mm Tactile Switch

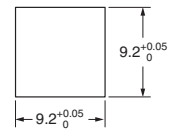
**B32-12**□0



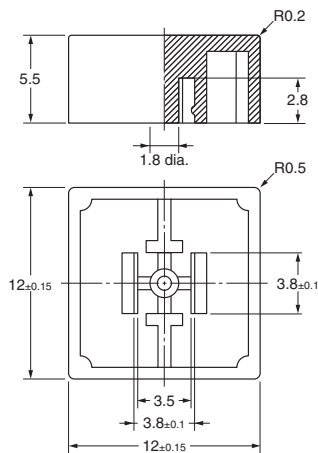
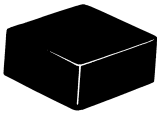
Reference Dimensions



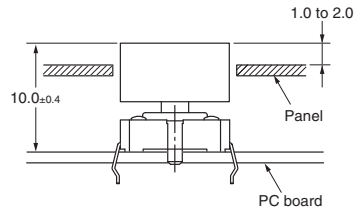
Panel Cutout



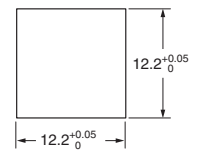
**B32-13**□0



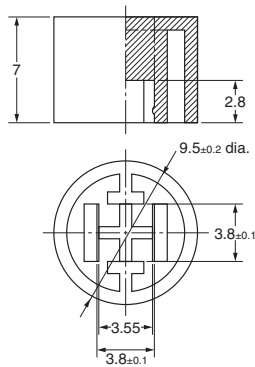
Reference Dimensions



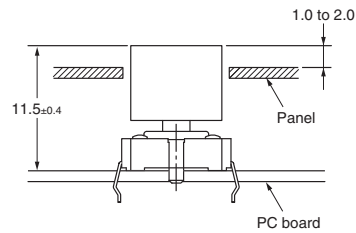
Panel Cutout



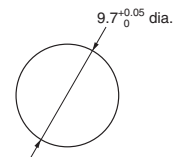
**B32-16**□0



Reference Dimensions



Panel Cutout



All sales are subject to Omron Electronic Components LLC standard terms and conditions of sale, which can be found at [http://www.components.omron.com/components/web/webfiles.nsf/sales\\_terms.html](http://www.components.omron.com/components/web/webfiles.nsf/sales_terms.html)

**ALL DIMENSIONS SHOWN ARE IN MILLIMETERS.**  
To convert millimeters into inches, multiply by 0.03937. To convert grams into ounces, multiply by 0.03527.

---

**OMRON**<sup>®</sup>

**OMRON ELECTRONIC  
COMPONENTS LLC**

55 E. Commerce Drive, Suite B  
Schaumburg, IL 60173

**847-882-2288**

**OMRON ON-LINE**

Global - <http://www.omron.com>

USA - <http://www.components.omron.com>

## X-ON Electronics

Largest Supplier of Electrical and Electronic Components

*Click to view similar products for [Switch Bezels / Switch Caps](#) category:*

*Click to view products by [Omron](#) manufacturer:*

Other Similar products are found below :

[896805000](#) [LW1A-B2-R](#) [LW2A-B1-G](#) [LW2A-B1-S](#) [61-9221.0](#) [61-9221.9](#) [61-9593.0](#) [61-9593.2](#) [61-9600.1](#) [704.604.4](#) [704-6089](#) [704-6097](#)  
[704.955.3](#) [76](#) [760203000](#) [760503000](#) [766601000](#) [MG12KB](#) [MH11](#) [MH13](#) [MH16](#) [MHU31](#) [800C2BLK](#) [MJ621](#) [MJ623](#) [MJ626](#) [MJ627](#) [908-](#)  
[1634](#) [92-343.200](#) [92-343.400](#) [95CAP-001](#) [95CAP-010](#) [95CAP-112](#) [11-932.7](#) [99-920.8](#) [A0162J](#) [A0163D](#) [11-931.2](#) [11-932.5](#) [11-937](#)  
[A16ZT-5011B](#) [121160200](#) [AT496F](#) [AT496H](#) [AW-RF8](#) [161006](#) [1631032](#) [1631034](#) [1631040](#) [1802169](#)