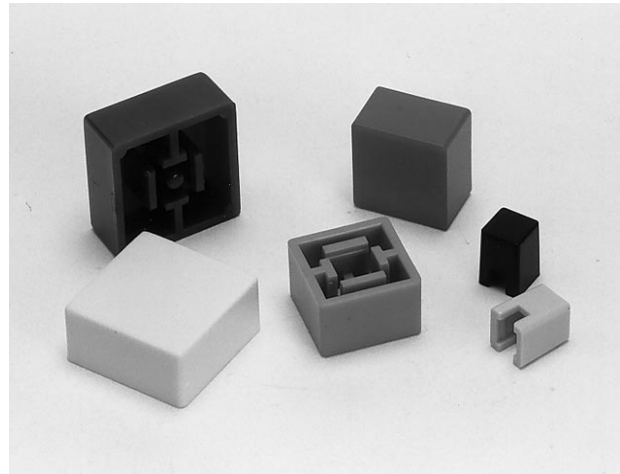


Designed Specially for Projected-plunger-type B3F and B3W Switches

- Available in a range of 9 colours.
- Three sizes of key top available.
 - 4x4mm for 6x6mm switch
 - 9x9 or 12x12mm for 12x12mm switch

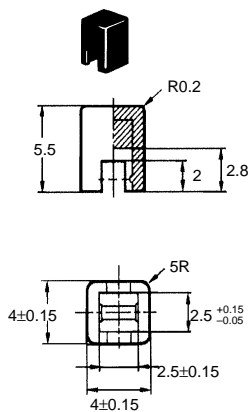


Ordering Information

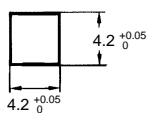
Available Colours for Key Tops	For 6 x 6 mm switches		For 12 x 12 mm switches	
	4 x 4 mm key top		9 x 9 mm key top	12 x 12 mm key top
Light grey	B32-1000	B32-1200	B32-1300	
Black	B32-1010	B32-1210	B32-1310	
Orange	B32-1020	B32-1220	B32-1320	
Yellow	B32-1030	B32-1230	B32-1330	
Blue	B32-1040	B32-1240	B32-1340	
Green	B32-1050	B32-1250	B32-1350	
White	B32-1060	B32-1260	B32-1360	
Light green	B32-1070	B32-1270	B32-1370	
Red	B32-1080	B32-1280	B32-1380	

Dimensions

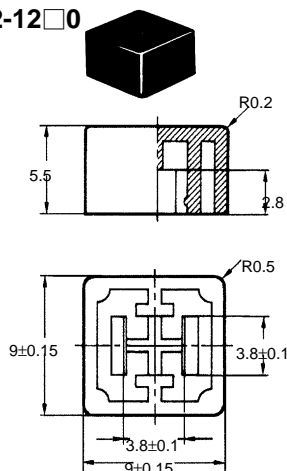
B32-10□0



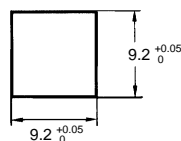
Panel Cutout of
B32-10□0



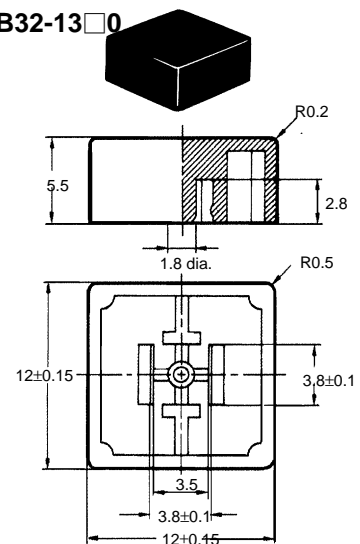
B32-12□0



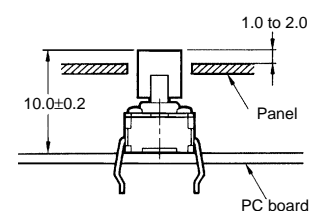
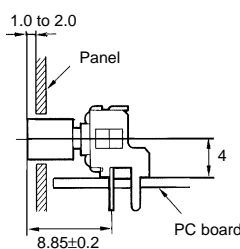
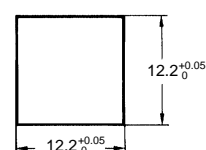
Panel Cutout of
B32-12□0



B32-13□0



Panel Cutout of
B32-13□0



X-ON Electronics

Largest Supplier of Electrical and Electronic Components

Click to view similar products for [Switch Bezels / Switch Caps](#) category:

Click to view products by [Omron](#) manufacturer:

Other Similar products are found below :

[896809000](#) [LW1A-B2-R](#) [LW2A-B1-G](#) [704.604.4](#) [704.955.3](#) [F1403](#) [7527](#) [760203000](#) [760503000](#) [766601000](#) [785105000](#) [785106000](#)
[79211759](#) [MG12KB](#) [MH11](#) [MH13](#) [MHU31](#) [MJ1216](#) [MJ1226](#) [MJ33](#) [MJ612](#) [MJ626](#) [MJ627](#) [9001T8BK](#) [908-1634](#) [92-343.200](#) [92-343.400](#)
[95804.920](#) [95CAP-011](#) [95CAP-112](#) [11-932.7](#) [99-901.9](#) [99-902.9](#) [99-909.4](#) [99-909.5](#) [99-920.8](#) [A0261A](#) [11-931.2](#) [11-932.5](#) [11-936](#) [11-937](#)
[AKTSC22B](#) [AW-RF8](#) [161006](#) [1825068-6](#) [184-1872](#) [187-1872](#) [188-1471](#) [1DFBLK](#) [1D-GRY](#)