

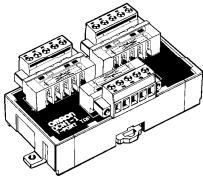
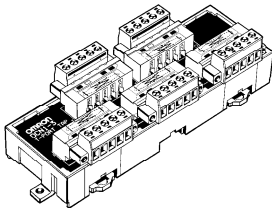
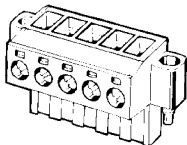
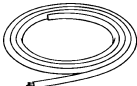


Peripheral Devices

T-branch Taps and Terminal-block Terminator

T-branch Taps Create One or Three Branch Lines



Ordering Information

Product		Appearance	Model	Specification
T-branch Tap for 1 branch line			DCN1-1C	Provided with 3 connectors, standard terminating resistor
T-branch Tap for 2 branch lines			DCN1-3C	Provided with 5 connectors, standard terminating resistor
Connector			XW4B-05C1-H1-D	---
DeviceNet Cables	Thin cables		DCA1-5C10	Outer diameter: 7.00 mm Length: 100 m
	Thick cables		DCA2-5C10	Outer diameter: 11.6 mm Length: 100 m
Terminal-block Terminator			DRS1-T	Resistance of 121 Ω

■ Connectors for DCN1-□C

Model	Comments	Manufacturer
MSTB2.5/5-ST-5.08-AU	For node connection	Phoenix Contact Corporation
MSTBP2.5/5-STF-5.08-AB AU SO	For T-branch Tap connection (with screws to secure the connector)	Phoenix Contact Corporation

Specifications

■ Ratings/Characteristics

Rated current	Between main lines: 8 A (power supply line) and 2 A (signal line) Between main and branch lines: 3 A (power supply line) and 1 A (signal line)
Insulation resistance	100 MΩ min. (at 500 VDC)
Dielectric strength	500 VAC for 1 min, leakage current: 1 mA max.
Ambient temperature	Operating: 0°C to 55°C

■ Materials

Item	Component	Materials
Unit	Main and Expansion Units	PBT resin with glass (UL14V-0)/gray
	DIN track lock	POM resin/yellow
Terminal block connector (see note)	Housing	PA66 resin (UL94V-0)/gray
	Contact	Phosphor bronze coated with gold
PCB		Glass epoxy resin

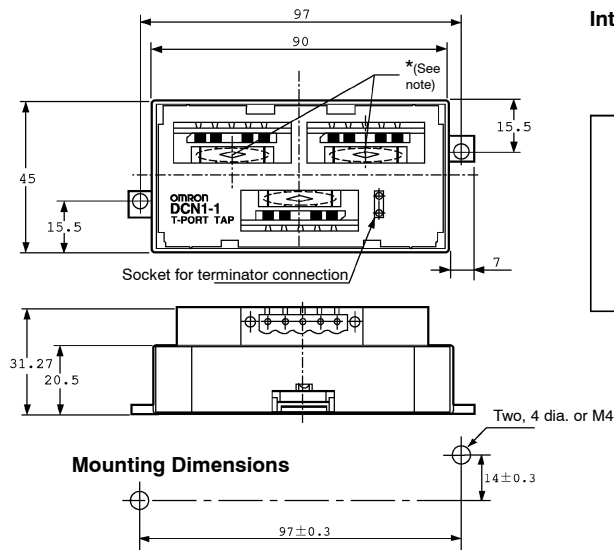
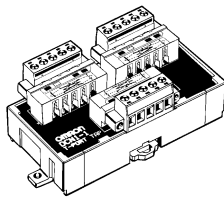
Note: The DCD1-1C is a product of Phoenix Contact.

Dimensions

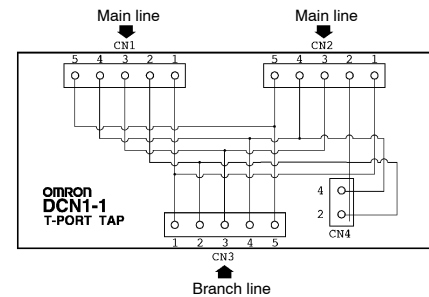
Note: All units are in millimeters unless otherwise indicated.

DCN1-1 (With No Branching Connector)

DCN1-1C (With Three Branching Connectors)



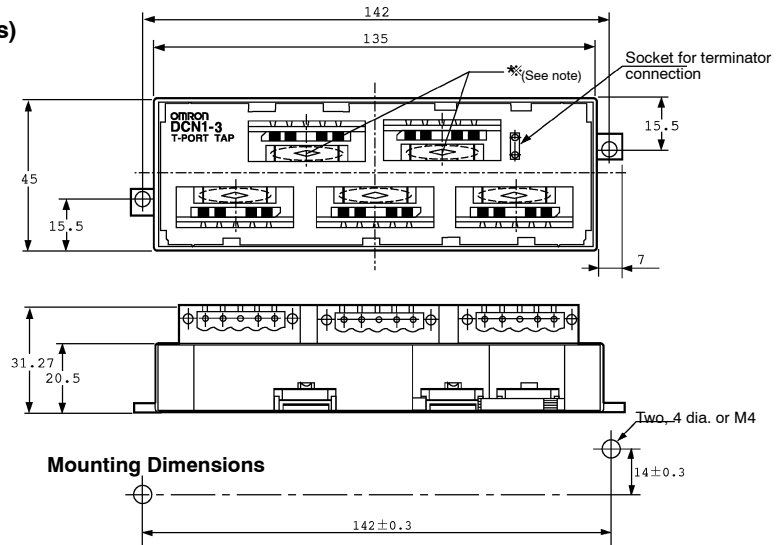
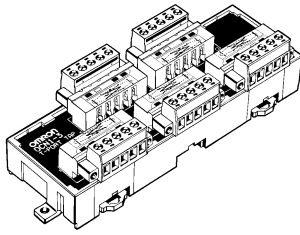
Internal Circuit



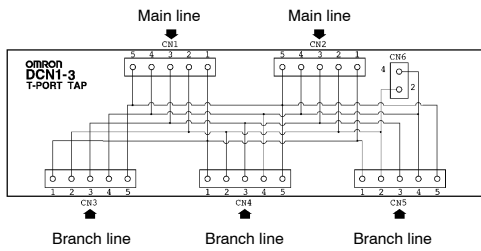
Terminal no.	
1	V-
2	CAN-L
3	DRAIN
4	CAN-H
5	V+

Note: When connecting a branch line to the main line, connect the main line to the connector marked with an asterisk because the resistance between the asterisked portion is minimal.

**DCN1-3 (With No Branching Connector)
DCN1-3C (With Five Branching Connectors)**



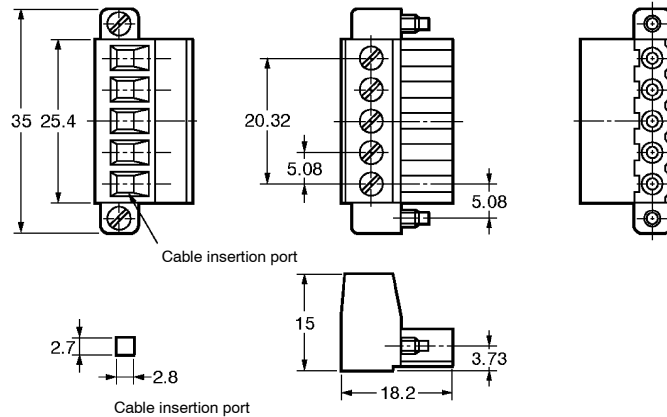
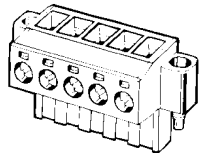
Internal Circuit



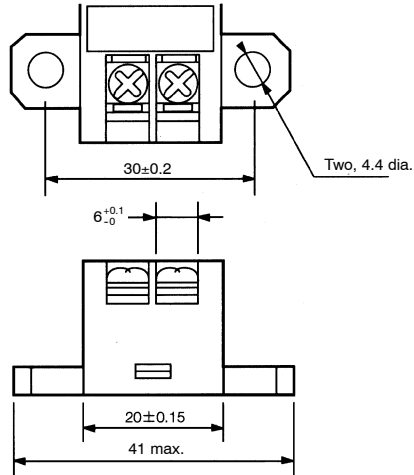
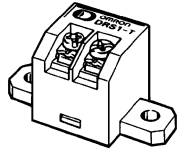
Terminal no.	
1	V-
2	CAN-L
3	DRAIN
4	CAN-H
5	V+

Note: When connecting a branch line to the main line, connect the main line to the connector marked with an asterisk because the resistance between the asterisked portion is minimal.

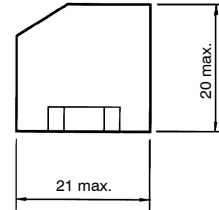
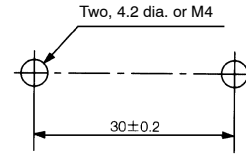
XW4B-05C1-H1-D (Connector)



DRS1-T Terminal-block Terminator



Mounting Holes



Precautions

Refer to the *DeviceNet Operation Manual (W267)* before using the Unit.

Correct Use

Refer to the *DeviceNet Operation Manual (W267)* for connecting or wiring T-branch Taps.

NOTE: DIMENSIONS SHOWN ARE IN MILLIMETERS. To convert millimeters to inches divide by 25.4.

OMRON®

OMRON ELECTRONICS, INC.

One East Commerce Drive
Schaumburg, IL 60173

1-800-55-OMRON

OMRON CANADA, INC.

885 Milner Avenue
Scarborough, Ontario M1B 5V8

416-286-6465

X-ON Electronics

Largest Supplier of Electrical and Electronic Components

Click to view similar products for [Controllers](#) category:

Click to view products by [Omron](#) manufacturer:

Other Similar products are found below :

[CS1WCN223](#) [CS1WCN713](#) [CS1WKS001E](#) [61F-11NH](#) [61FGPN8DAC120](#) [61F-GP-NT AC110](#) [61F-GPN-V50-AC110](#) [70177-1011](#) [F03-03](#)
[HAS B](#) [F03-03 HAS C](#) [F03-31](#) [81513201](#) [81513535](#) [81550401](#) [FT1A-C12RA-W](#) [88981106](#) [H2CAC24A](#) [R88A-CAGA005S](#) [R88A-](#)
[CRGB003CR-E](#) [R88ARR080100S](#) [R88A-TK01K](#) [DCN1-1](#) [DTB4896VRE](#) [DTB9696CVE](#) [DTB9696LVE](#) [MR-50LF+](#) [E53-AZ01](#) [E53E8C](#)
[E5CWLQ1TCAC100240](#) [B300LKL21](#) [NE1ASCPU02EIPVER11](#) [NE1SCPU01](#) [NE1SDRM21U](#) [NSCXDC1V3](#) [NSH5-232CW-3M](#)
[NT20SST122BV1](#) [NV3Q-SW41](#) [NV4W-ATT01](#) [NV-CN001](#) [OAS-160-N](#) [K31S6](#) [K33-L1B](#) [K3TX-AD31A](#) [L595020](#) [SRS2-1](#) [G32X-V2K](#)
[26546803](#) [26546805](#) [26546831](#) [CJ1W-OD204](#)