

**Solid-State Relay – G3R/G3RD**



**Compact SSRs Ideal for Built-in Applications**

- Vertical, compact SSRs with an operation indicator offered in versatile variations.
- High dielectric strength of 2,500 VAC for 2-A models.
- High-voltage DC version also available.
- Approved by UL and CSA.



**Ordering Information**

Terminals	Isolation	Zero cross function	Indicator	Rated output load (Applicable output load)	Rated input voltage	Model
PCB	Phototriac	Yes		2 A at 100 to 120 VDC (2 A at 75 to 132 VDC) (see note 1)		G3R-102PN-US
		No				G3R-102PLN-US
		Yes		2 A at 100 to 240 VAC (2 A at 75 to 264 VAC) (see note 2)		G3R-202PN-US
		No				G3R-202PLN-US
	Photocoupler	---	Yes	1.5 A at 5 to 110 VDC (1.5 A at 3 to 125 VDC)		G3RD-101PN-US
		---		2 A at 4 to 48 VDC (2 A at 3 to 52.8 VDC) (see note 3)		G3RD-X02PN-US

**Note:** 1. Product is labelled "125 VAC".  
 2. Product is labelled "250 VAC".  
 3. Product is labelled "50 VDC".

Solid State Relays

**Solid-State Relay – G3R/G3RD**

**Specifications**

■ **Ratings**

**Input (AC Output With Zero Cross Function)**

Model	Rated voltage	Operating voltage	Impedance	Voltage level	
				Must operate voltage	Must release voltage
G3R-102PN	5 VDC	4 to 6 VDC	250 Ω±20%	3.5 VDC max.	0.375 VDC min.
G3R-202PN	12 VDC	9.6 to 14.4 VDC	600 Ω±20%	8.4 VDC max.	0.9 VDC min.
	24 VDC	19.2 to 28.8 VDC	1.5 kΩ±20%	16.8 VDC max.	1.8 VDC min.

**Input (AC Output Without Zero Cross Function, DC Output)**

Model	Rated voltage	Operating voltage	Impedance	Voltage level	
				Must operate voltage	Must release voltage
G3R-102PLN	5 VDC	4 to 6 VDC	300 Ω±20%	3.5 VDC max.	0.375 VDC min.
G3R-202PLN	12 VDC	9.6 to 14.4 VDC	750 Ω±20%	8.4 VDC max.	0.9 VDC min.
G3RD-X02PN G3RD-101PN	24 VDC	19.2 to 28.8 VDC	1.5 kΩ±20%	16.8 VDC max.	1.8 VDC min.

**Output**

Model	Rated load voltage	Applicable load		
		Load voltage range	Load current	Inrush current
G3R-102PN G3R-102PLN	100 to 120 VAC	75 to 132 VAC	0.1 to 2 A	30 A (60 Hz, 1 cycle)
G3R-202PN G3R-202PLN	100 to 240 VAC	75 to 264 VAC	0.1 to 2 A	
G3RD-X02PN	4 to 48 VDC	3 to 52.8 VDC	0.01 to 2 A	8 A (10 ms)
G3RD-101PN	5 to 110 VDC	3 to 125 VDC	0.01 to 1.5 A	2.5 A (10 ms)

■ **Characteristics**

Item	G3R-102PLN	G3R-102PN	G3R-202PLN	G3R-202PN	G3RD-X02PN/-101PN
Operate time	1 ms max.	1/2 of load power source cycle + 1 ms max.	1 ms max.	1/2 of load power source cycle + 1 ms max.	1 ms max.
Release time	1/2 of load power source cycle + 1 ms max.				1 ms max.
Output ON voltage drop	1.6 V (RMS) max.				1.5 V max.
Leakage current	2 mA max. (at 100 VAC)		2 mA max. (at 100 VAC) 5 mA max. (at 200 VAC)		0.1 mA max. (at 125 VDC) 0.1 mA max. (at 50 VDC)
Insulation resistance	100 MΩ min. (at 500 VDC)				
Dielectric strength	2,500 VAC, 50/60 Hz for 1 min				2,500 VAC, 50/60 Hz for 1 min
Vibration resistance	Malfunction: 10 to 55 Hz, 1.5-mm double amplitude				
Shock resistance	Malfunction: 1,000 m/s <sup>2</sup>				
Ambient temperature	Operating: -30°C to 80°C (with no icing or condensation) Storage: -30°C to 100°C (with no icing or condensation)				
Approved standards	UL508 File No. E64562, CSA C22.2 (No. 14) File No. 35535				
Ambient humidity	Operating: 45% to 85%				
Weight	Approx. 18 g				

■ **Approved Standards**

UL508 File No. E64562/CSA C22.2 (No.0, No.14) File No. LR35535

Model	Ratings
G3R-102P(L)(N)-US	2 A at 125 VAC
G3R-202P(L)(N)-US	2 A at 250 VAC
G3RD-X02P(N)-US	2 A at 50 VDC

**Solid-State Relay – G3R/G3RD**

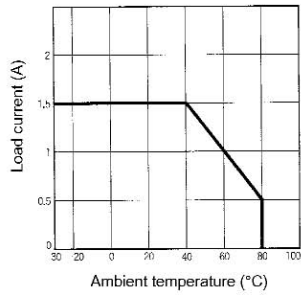


**Engineering Data**

**Load Current vs. Ambient Temperature Characteristics**

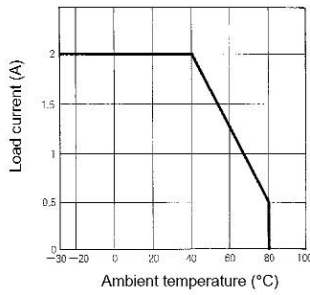
**1-A Load Model**

**G3RD-101PN**



**2-A Load Model**

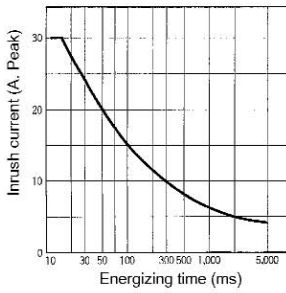
**G3R-102□, G3RD-X02□, G3R-202□**



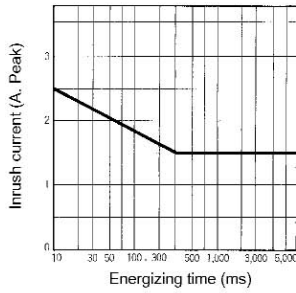
**Inrush Current Resistivity**

Non-repetitive (Keep the inrush current to half the rated value if it occurs repetitively.)

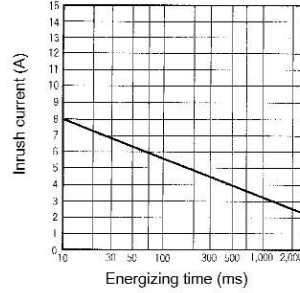
**G3R-102□/-202□**



**G3RD-101PN**



**G3RD-X02□**



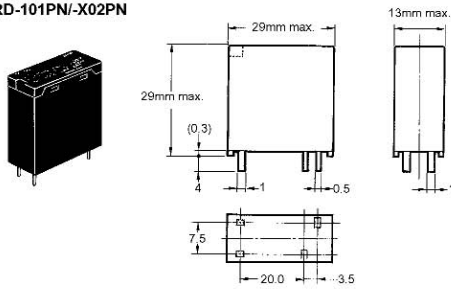
Solid State Relays

## Solid-State Relay – G3R/G3RD

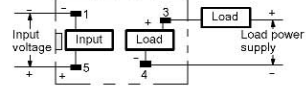
### Dimensions

**Note:** All units are in millimeters unless otherwise indicated.

G3R-102P / -202P  
G3RD-101PN / -X02PN

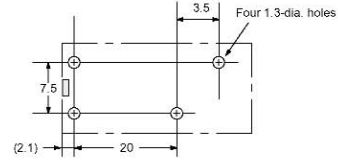


#### Terminal Arrangement/ Internal Connections (Bottom View)



**Note:** The plus and minus symbols shown in the parentheses are for DC loads.

#### Mounting Holes



### Precautions

#### Connection

The SSR for DC switching a surge can connect to a load regardless of the polarity of the positive and negative output terminals.

#### Protective Terminal

For AC inductive loads, connect the load terminals of the SSR to a surge absorber (varistor).

**ALL DIMENSIONS SHOWN ARE IN MILLIMETRES.**

To convert millimetres into inches, multiply by 0.03937. To convert grams into ounces, multiply by 0.03527.

## X-ON Electronics

Largest Supplier of Electrical and Electronic Components

*Click to view similar products for [Solid State Relays - Industrial Mount](#) category:*

*Click to view products by [Omron](#) manufacturer:*

Other Similar products are found below :

[D2440-C](#) [H10CA4890](#) [D4875C](#) [D53TP50DH-10](#) [1395831-1](#) [1616010-6](#) [BR312BY](#) [A-1326](#) [H10CA4850](#) [H12CA4890VL](#) [RA2410-D06](#)  
[RA2410HA06T](#) [D1202F](#) [D53TP50-10](#) [W230E-1-12](#) [W230T-3-12](#) [1-1617030-3](#) [1-1617033-7](#) [MS2-D2420](#) [MS2-D2430](#) [A-1440](#)  
[RJ1P60V50E](#) [HS501DR-D2425](#) [RN1F48I50](#) [70.362.1028.0](#) [7-1393030-8](#) [Z5.509.0828.0](#) [G3DZ-4B DC24](#) [G3DZ-F4B DC12](#) [2912138](#)  
[SSRDAC10](#) [RV8S-L-A240-D24](#) [RV8S-L-A240-D6](#) [RV8S-S-A240-D24](#) [RV8S-S-A240-D6](#) [RV8S-S-A240Z-D24](#) [RV8S-S-D24-A240](#) [RV8S-](#)  
[S-D48-A120](#) [RN1F12V50](#) [RJ1P60I30E](#) [RJ1P60V30E](#) [SO967860](#) [SMT8628521](#) [SO869970](#) [SOD867180](#) [SAL961360](#) [SO867970](#)  
[SOB863860](#) [SOB867640](#) [SOB942360](#)