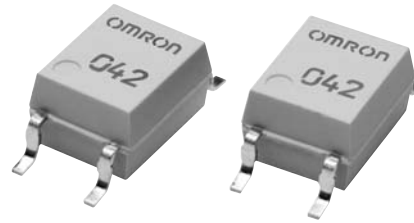


Special SOP4-pin package with Dielectric strength AC 3.75 kV

- Trigger LED forward current of 2 mA (maximum) facilitates power saving designs and prolonged battery life.
- Continuous load current of 70 mA.

RoHS compliant



NEW

⚠ Refer to "Common Precautions".

Note: The actual product is marked differently from the image shown here.

Application Examples

- Broadband systems
- Security systems
- Industrial equipment
- Battery powered equipment
- Measurement devices
- Amusement machines

List of Models

Package	Contact form	Terminals	Load voltage (peak value) (See the note.)	Model	Number per stick	Number per tape
Special SOP4	SPST-NO	Surface-mounting terminals	60 V	G3VM-61VY	150	---
				G3VM-61VY(TR)	---	3,000

Note: The AC peak and DC value are given for the load voltage.

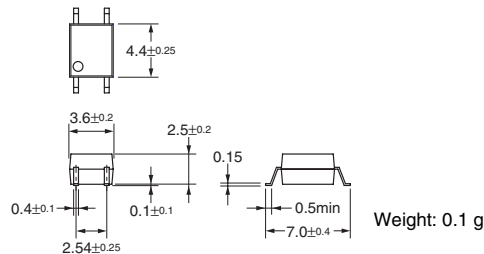
Dimensions

Note: All units are in millimeters unless otherwise indicated.

G3VM-61VY

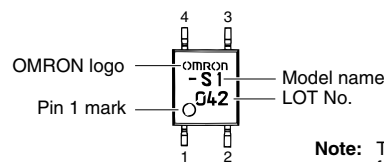
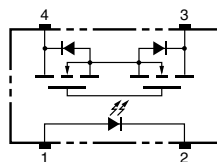


Note: The actual product is marked differently from the image shown here.



Terminal Arrangement/Internal Connections (Top View)

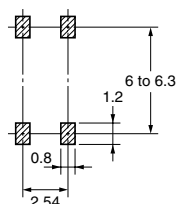
G3VM-61VY



Note: The actual product is marked differently from the image shown here.

Actual Mounting Pad Dimensions (Recommended Value, Top View)

G3VM-61VY



Absolute Maximum Ratings (T_a = 25°C)

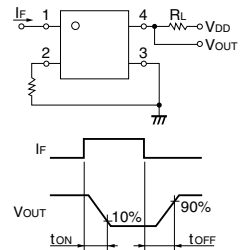
Item	Symbol	Rating	Unit	Measurement Conditions	
Input	LED forward current	I _F	50	mA	
	Repetitive peak LED forward current	I _{FP}	1	A	
	LED forward current reduction rate	Δ I _F /°C	-0.5	mA/°C	T _a ≥ 25°C
	LED reverse voltage	V _R	5	V	
	Connection temperature	T _j	125	°C	
Output	Load voltage (AC peak/DC)	V _{OFF}	60	V	
	Continuous load current (AC peak/DC)	I _O	70	mA	
	ON current reduction rate	Δ I _O /°C	-0.7	mA/°C	T _a ≥ 25°C
	Connection temperature	T _j	125	°C	
Dielectric strength between input and output (See note 1.)		V _{I-O}	3,750	V _{rms}	AC for 1 min
Operating temperature		T _a	-40 to +85	°C	With no icing or condensation
Storage temperature		T _{stg}	-55 to +125	°C	With no icing or condensation
Soldering temperature (10 s)		---	260	°C	10 s

Note: 1. The dielectric strength between the input and output was checked by applying voltage between all pins as a group on the LED side and all pins as a group on the light-receiving side.

Electrical Characteristics (T_a = 25°C)

Item	Symbol	Minimum	Typical	Maximum	Unit	Measurement conditions	
Input	LED forward voltage	V _F	1.0	1.15	1.3	V	I _F = 10 mA
	Reverse current	I _R	---	---	10	μA	V _R = 5 V
	Capacity between terminals	C _T	---	30	---	pF	V = 0, f = 1 MHz
	Trigger LED forward current	I _{FT}	---	0.6	2	mA	I _O = 70 mA
Output	Maximum resistance with output ON	R _{ON}	---	25	50	Ω	I _F = 3 mA, I _O = 70 mA
	Current leakage when the relay is open	I _{LEAK}	---	1	1000	nA	V _{OFF} = 60 V
Capacity between I/O terminals		C _{I-O}	---	0.4	---	pF	f = 1 MHz, V _s = 0 V
Insulation resistance		R _{I-O}	1,000	---	---	MΩ	V _{I-O} = 500 VDC, R _{oH} ≤ 60%
Turn-ON time		t _{ON}	---	1	5	ms	I _F = 3 mA, R _L = 200 Ω, V _{DD} = 10 V (See note 2.)
Turn-OFF time		t _{OFF}	---	0.5	5	ms	

Note: 2. Turn-ON and Turn-OFF Times



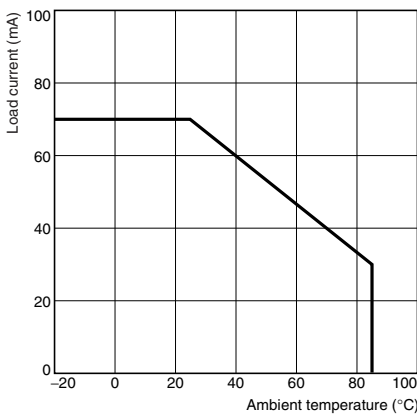
Recommended Operating Conditions

Use the G3VM under the following conditions so that the Relay will operate properly.

Item	Symbol	Minimum	Typical	Maximum	Unit
Load voltage (AC peak/DC)	V _{DD}	---	---	48	V
Operating LED forward current	I _F	---	3	25	mA
Continuous load current (AC peak/DC)	I _O	---	---	60	mA
Operating temperature	T _a	-20	---	65	°C

Engineering Data

Load Current vs. Ambient Temperature
G3VM-61VY



Safety Precautions

Refer to "Common Precautions" for all G3VM models.

X-ON Electronics

Largest Supplier of Electrical and Electronic Components

Click to view similar products for [Solid State Relays - PCB Mount](#) category:

Click to view products by [Omron](#) manufacturer:

Other Similar products are found below :

[M86F-2W](#) [M90F-2Y](#) [G2-1A07-ST](#) [G2-1A07-TT](#) [G2-1B02-TT](#) [G2-DA06-ST](#) [923812OCAS](#) [PLA134S](#) [DS11-1005](#) [AQH3213J](#) [AQV212J](#)
[AQY412EHAJ](#) [EFR1200480A150](#) [901-7](#) [LCA220](#) [LCB110S](#) [1618400-5](#) [SR75-1ST](#) [AQH2213AJ](#) [AQV112KLJ](#) [AQV212AJ](#) [AQV238AD01](#)
[AQW414TS](#) [AQY221N2SYD01](#) [AQY221R2VJ](#) [AQY275AXJ](#) [AQY414SXE01](#) [G2-1A02-ST](#) [G2-1A03-ST](#) [G2-1A03-TT](#) [G2-1A05-ST](#) [G2-](#)
[1A06-TT](#) [G2-1A23-TT](#) [G2-1B01-ST](#) [G2-1B01-TT](#) [G2-1B02-ST](#) [G2-DA03-ST](#) [G2-DA03-TT](#) [G2-DA06-TT](#) [CPC1333GR](#) [3-1617776-2](#)
[CTA2425](#) [TLP3131\(F\)](#) [LBA110S](#) [LBB110S](#) [LCA110LSTR](#) [LCB126S](#) [WPPM-0626D](#) [WPPM-3526D](#) [WPPM-3588D](#)