

Easy-to-Use Magnetic Proximity Sensor

- Compact reed-switch size saves space on machines
- Ideal for door and cover closures in applications without operator hazards
- Separate sensor and magnet parts allow multiple magnet positions for a single sensor to detect



Ordering Information

Description	Part number
Sensor and magnet set	GLS-1
Sensor only	GLS-S1
Magnet only	GLS-M1

Specifications

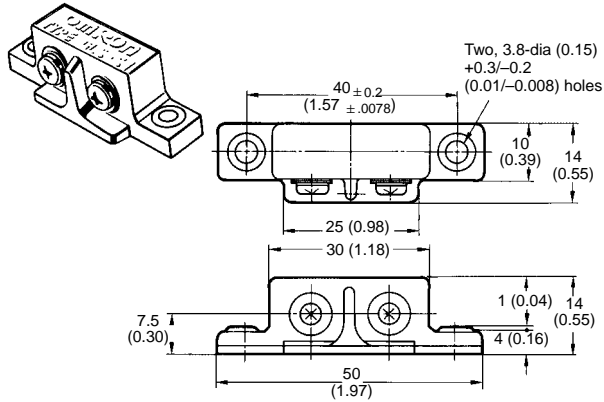
■ RATINGS

Sensing distance		15 mm (0.59 in) min. under the conditions specified in <i>Precautions</i>
Contact circuit		SPST-NO
Switching capacity		10 W max. at 100 VDC and 0.1 A max.
Contact dielectric strength		250 VDC for 1 min at a leakage current of 1 mA max.
Response frequency		20 Hz max.
Ambient temperature	Operating	-20°C to 60°C (-4°F to 140°F) with no icing
Contact resistance		150 mΩ max.
Dielectric strength		1,000 VAC for 1 min between each terminal and non-charged part
Life expectancy		50,000,000 times min. with 0.1-A resistive load at 24 VDC
Vibration resistance		Destruction: 10 to 55 Hz, 1.5-mm (0.059 in) double amplitude for 2 hours each in X, Y, and Z directions
Shock resistance		Destruction: 300 m/s ² (984 ft/sec ²) approx. 30G in X, Y, and Z directions.
Material	Case	ABS
	Sensing face	ABS
Enclosure rating		IP40

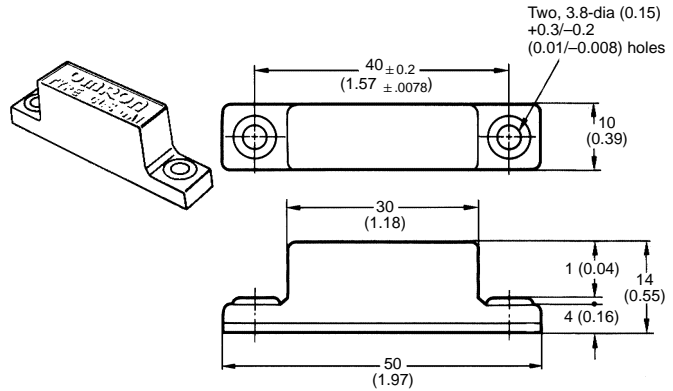
Dimensions

Unit: mm (inch)

■ GLS-S1



■ GLS-M1



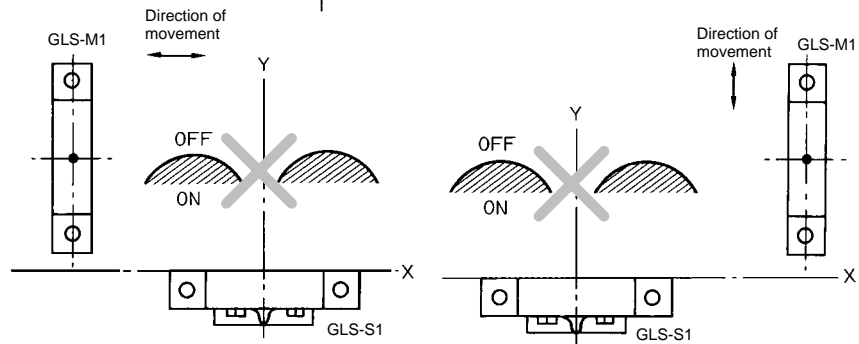
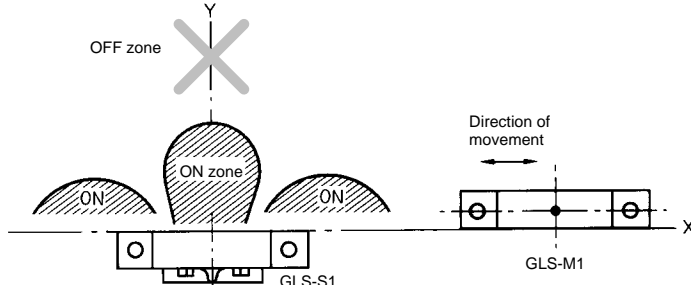
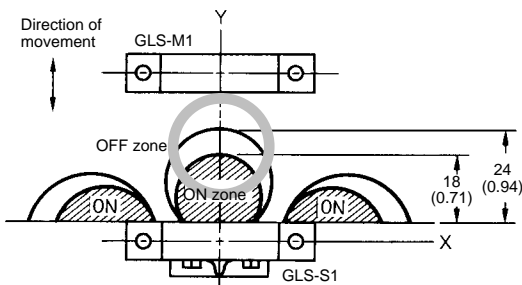
Precautions

■ MOUNTING

The characteristics of the GLS will change if the GLS is mounted to ferrous materials, such as a steel plate.

■ AVOID EXCESSIVE SHOCK

Do not impose excessive shock to the Sensor (e.g., dropping the Sensor from a height of 80 cm (31.49 in) or more), or the Sensor may malfunction.



NOTE: DIMENSIONS SHOWN ARE IN MILLIMETERS. To convert millimeters to inches divide by 25.4.

OMRON[®]
OMRON ELECTRONICS, INC.
One East Commerce Drive
Schaumburg, IL 60173
1-800-55-OMRON

OMRON CANADA, INC.
885 Milner Avenue
Scarborough, Ontario M1B 5V8
416-286-6465

X-ON Electronics

Largest Supplier of Electrical and Electronic Components

Click to view similar products for [Proximity Sensors](#) category:

Click to view products by [Omron](#) manufacturer:

Other Similar products are found below :

[01.001.5653.1](#) [70.340.1028.0](#) [70.360.2428.0](#) [70.364.4828.0](#) [70.810.1053.0](#) [72.360.1628.0](#) [73.363.6428.0](#) [8027AL20NL2CPXX](#) [FYCC8E1-2](#)
[9221350022](#) [922AA2W-A9P-L](#) [PLS2](#) [GL-12F-C2.5X10\(LOT3\)](#) [972AB2XM-A3N-L](#) [972AB3XM-A3P-L](#) [PS3251](#) [980659-1](#) [QT-12](#) [E2E2-](#)
[X5M41-M4](#) [E2E-X14MD1-G](#) [E2E-X2D1-G](#) [E2EX2ME2N](#) [E2EX3D1SM1N](#) [E2E-X4MD1-G](#) [E2E-X5E1-5M-N](#) [E2E-X5Y2-N](#) [E2E-X7D1-](#)
[M1J-T-0.3M-N](#) [E2FMX1R5D12M](#) [E2K-F10MC1](#) [5M](#) [EH-302](#) [EI3010TBOP](#) [EI5515NPAP](#) [MS605AU](#) [EP175-32000](#) [IFRM04N35B1/L](#)
[IFRM04P1513/S35L](#) [IFRM06P1703/S35L](#) [IFRM08P1501/S35L](#) [IFRM12N17G3/L](#) [IFRM12P17G3/L](#) [IFRM12P3502/L](#) [IFRM12P37G1/S14L](#)
[ILFK12E9189/I02](#) [ILFK12E9193/I02](#) [IMM2582C](#) [OISN-013](#) [25.161.3253.0](#) [25.332.0653.1](#) [25.352.0653.0](#) [25.352.0753.0](#)