

# GQ12-A series

the installation aperture is  $\Phi 12\text{mm}$ ;

- ☆ the switch is "self recovery | slow action | single pole single throw";
- ☆ the products have complete types of lamps (single point, ring and power symbols);
- ☆ the product has two kinds of heads: low flat and high flat, which can be selected by users;
- ☆ the waterproof grade of the product is IP65 / IP67.



## GQ12-A series model description

GQ12 - A - *0* / *1* / *2*

Symbol	Symbol name	Specify
★	Head shape	F: Flat round / H: High round
	Contact Structure	10: 1NO / No digital means indicator
◇	Illuminated Type	D: ● Dot illuminated / E: ○ Ring illuminated / DT: ☺ Ring+power symbol illuminated / No letters mean no lights
◆	Wiring type	J: Wiring patch
	Color	R: Red / G: Green / Y: Yellow / B: Blue / W: White
	Voltage	6V / 12V / 24V All have built-in resistors, other voltage levels can be customized, and external resistors are required
	Housing Material	C: Brass chrome plating / S: Stainless steel / A: Zinc aluminum alloy (Black)

Note: Please read the catalog carefully, and choose the right part-number according to the sign.

## Performance Characteristic

Operating Temp	-25°C~+55°C (Non freezing) Keep the switch air circulating well
Operating Humidity	45~85% RH(Non condensing)
Contact Resistance	≤50mΩ
Insulation Resistance	≥100MΩ (500VDC)
Max. withstanding voltage	1500VAC, 50Hz, 1min
Vibration resistance	50Hz, The amplitude is about 1.2mm
Solder heat resistance	320°C 3s
Switch rating	2A/36VDC
Mechanical Life	500,000 cycles
Electrical Life	200,000 cycles
Base material	PA
Nut torque	About 0.3Nm
Torque	About 1.5N
Operation Travel	About 1.5mm
Protection class	IP65(IP67 can be customized), IK07

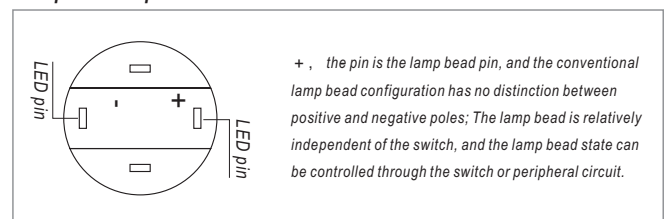
## Switch structure description

Type	Diagram	Symbol
X		

## LED Specifications

LED life	Current	Allowable voltage fluctuation range	Circuit diagram
≥40000 hours	≤24V about 15mA	DC: ±10%	<p>The product has built-in protective resistance, and the lamp bead wiring has no distinction between positive and negative poles.</p>

## LED pin description



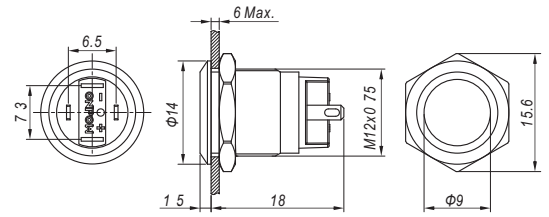
## Standards and certification

Corresponding standard	Certification mark	Certification authority / certification number
EN61058-1:2018		UDEM/M.2021.206.C62197



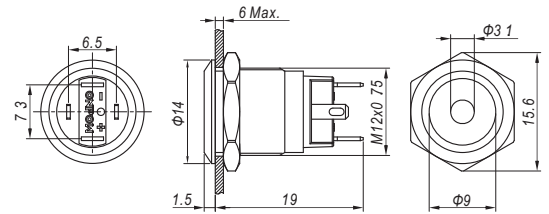
GQ12-AF-10/JI

**Contact Structure** 1NO  
**Operation type** Momentary  
**Housing Material** C: Brass chrome plating / S: Stainless steel / A: Zinc aluminum alloy (Black)  
**Wiring type** Wiring patch(2x0 5mm)  
**Protection class** IP65(IP67 can be customized), IK07  
**Applicable accessories** M12-12F



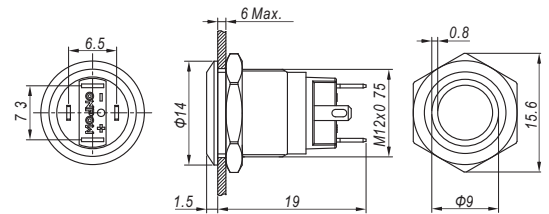
GQ12-AF-10D/JI

**Contact Structure** 1NO  
**Operation type** Momentary  
**LED color** R G Y B W  
**Voltage** 6V/12V/24V  
**Housing Material** C: Brass chrome plating / S: Stainless steel  
**Wiring type** Wiring patch(2x0 5mm)  
**Protection class** IP65(IP67 can be customized), IK07  
**Applicable accessories** M12-12F



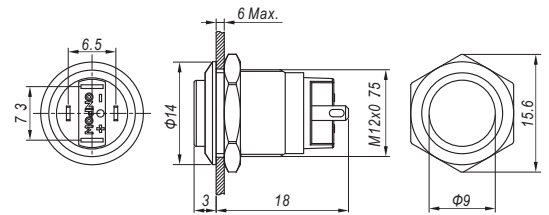
GQ12-AF-10E/JI

**Contact Structure** 1NO  
**Operation type** Momentary  
**LED color** R G Y B W  
**Voltage** 6V/12V/24V  
**Housing Material** C: Brass chrome plating / S: Stainless steel / A: Zinc aluminum alloy (Black)  
**Wiring type** Wiring patch(2x0 5mm)  
**Protection class** IP65(IP67 can be customized), IK07  
**Applicable accessories** M12-12F



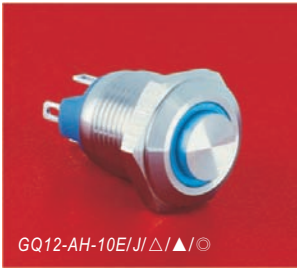
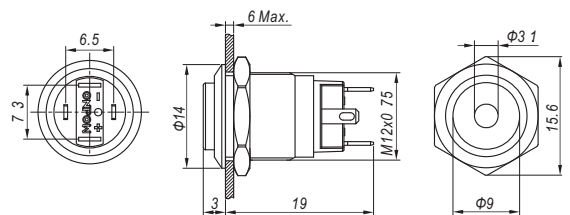
GQ12-AH-10/JI

**Contact Structure** 1NO  
**Operation type** Momentary  
**Housing Material** C: Brass chrome plating / S: Stainless steel  
**Wiring type** Wiring patch(2x0 5mm)  
**Protection class** IP65(IP67 can be customized), IK07  
**Applicable accessories** M12-12H



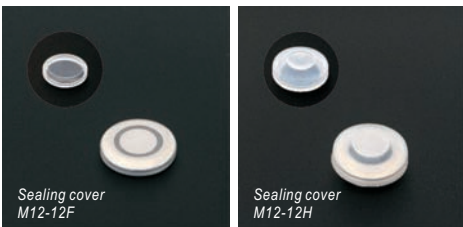
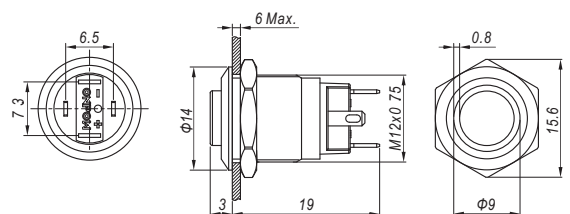
GQ12-AH-10D/JI

**Contact Structure** 1NO  
**Operation type** Momentary  
**LED color** R G Y B W  
**Voltage** 6V/12V/24V  
**Housing Material** C: Brass chrome plating / S: Stainless steel  
**Wiring type** Wiring patch(2x0 5mm)  
**Protection class** IP65(IP67 can be customized), IK07  
**Applicable accessories** M12-12H



GQ12-AH-10E/JI

**Contact Structure** 1NO  
**Operation type** Momentary  
**LED color** R G Y B W  
**Voltage** 6V/12V/24V  
**Housing Material** C: Brass chrome plating / S: Stainless steel  
**Wiring type** Wiring patch(2x0 5mm)  
**Protection class** IP65(IP67 can be customized), IK07  
**Applicable accessories** M12-12H

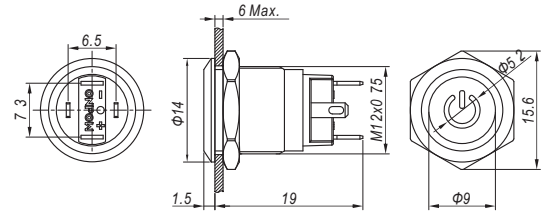


Sealing cover M12-12F

Sealing cover M12-12H



Contact Structure 1NO  
 Operation type Momentary  
 LED color △ R G Y B W  
 Voltage 6V/12V/24V  
 Housing Material Stainless steel  
 Wiring type Wiring patch(2x0.5mm)  
 Protection class IP65(IP67 can be customized), IK07  
 Applicable accessories M12-12F



## X-ON Electronics

Largest Supplier of Electrical and Electronic Components

*Click to view similar products for [Pushbutton Switches](#) category:*

*Click to view products by [Onpow](#) manufacturer:*

Other Similar products are found below :

[8971K1133](#) [LW2L-M1C20M-A](#) [M22-D-R-GB0/K11](#) [701PB580](#) [7199K101](#) [810K12910](#) [810KSV30B](#) [FLT 2U EE 01A](#) [MML21EA2ADK](#)  
[MML21KA3ABK](#) [MML23KA3AC05K-001](#) [MML23KW3AA01W](#) [8418K2](#) [8442K3](#) [8450K1](#) [860K11911T01A](#) [861901](#) [861K11911T01A07](#)  
[861K13810T00A14](#) [861K13911](#) [8646AB6X718UL](#) [9533CD4+U574+U4922](#) [99-453.837](#) [A2PMA1X03EC56](#) [A3A-7310](#) [A3A-7340](#)  
[12037A2ULCSA](#) [1203A2UL](#) [ABGW410-R](#) [ABN400-R](#) [121382](#) [1213C3](#) [HE3B-M2](#) [121194](#) [1212MRA](#) [1241.1183.7047](#) [121489](#)  
[1223A2ULCSA](#) [1241.1183.8000](#) [1241.1183.8029](#) [D5P-MT4](#) [13435AG](#) [13445AD29GX768](#) [AG23-L2](#) [AH165-2SGLG1TE3](#) [AH165-](#)  
[TGFY22](#) [AH165-TGL5Y11E3](#) [AH165-TGLR11AA3](#) [AH165-TL5Y22E](#) [AH165-TLR11E](#)