

ONPOW6219 Series

- ☆ Mounting hole diameter: Φ 19mm;
- ☆ Switch contact is slow-motion / single-break
- ☆ Small size and large load current make it the best choice for users who require of big current;
- ☆ Water proof level: IP67 MAX.



ONPOW6219 series Part-number Description

ONPOW6219★-□■◇/◆/△/▲/◎/※

Code of symbol	Meaning of symbol	Description
★	Actuator shape	F: flat round
□	Contact structure	10: 1NO
■	Operation mode	Z: latching / no letter means momentary
◇	Illumination type	E: ○ ring / ET: ◎ ring+on/off symbol / no letter means no lamp
◆	Wiring type	J: pin terminal
△	Lamp color	R:Red / G:Green / Y:Yellow / B:Blue / W:White
▲	Lamp voltage	5~6V / 12~24V with inner resistor; other voltage needs connecting of outer resistor.
◎	Crust material	S:Stainless steel
※	Proof level	No letter means IP40 / FP:IP67

Note: Please read the catalog carefully, and choose the right part-number according to the sign.

Performance characteristic

Operating Temperature	-25°C~+55°C(Non freezing), Keep the air flowing around
Operating Humidity	45~85%RH(no condensing)
Contact Resistance	≤50mΩ
Insulation Resistance	≥100MΩ(500VDC)
Dielectric Strength	1500V, AC 50Hz, 1min
Vibration Resistance	50Hz, Amplitude 1.2mm
Solder Heat Resistance	320°C, no more than 3 seconds
Contact Ratings	AC-15: 5A/220VAC
	AC-12: 20A/220VAC
Mechanical Life:	1000,000 circles typical
Electrical Life	50,000 circles typical
Material of Base:	PA
Torque	around 0.6Nm
Actuation Force	around 6N
Actuation Travel	around 3.5mm
Sealing Degree	IP40(IP67 made to order), IK08

Switching operation

Type	Diagram	Sign
X		

Note: Using two terminals, double-break and slow-motion contact

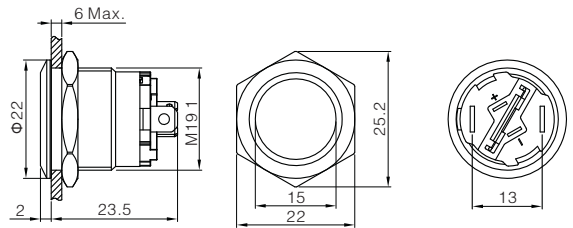
Lamp ratings

Life	Rated Current	Allowable Voltage Fluctuation Range	Lamp Circuit Diagram
≥40000hours	≤15mA	DC: 1 0% AC: 2 0%	 ≤24V with inner resistor the terminals have no difference of anode and cathode.

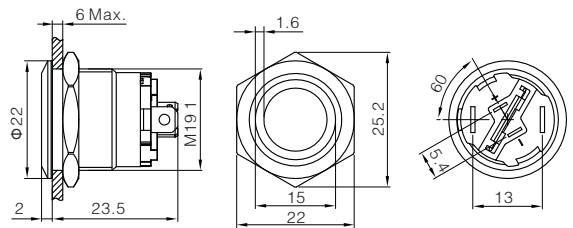
Image	Description	Dimensions
-------	-------------	------------



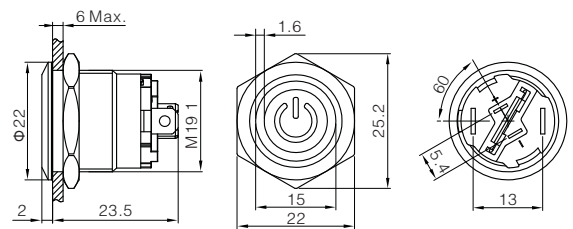
Contact Configuration 1NO
 Operation Type ■ Z: latching / no letter means momentary
 Crust material Stainless steel
 Terminal Type Pin Terminal(4.8 0.8mm)
 Sealing degree※ no letter means IP40 / FP:IP67
Applicable accessories seal cover M12-19F / protect cover T21-19



Contact Configuration 1NO
 Operation Type ■ Z: latching / no letter means momentary
 Lamp color Δ R G Y B W
 Lamp voltage ▲ 5-6V / 12-24V
 Crust material Stainless steel
 Terminal Type Pin Terminal(4.8 0.8mm)
 LED Terminal(2.8 0.5mm)
 Sealing degree※ no letter means IP40 / FP:IP67
Applicable accessories seal cover M12-19F / protect cover T21-19



Contact Configuration 1NO
 Operation Type ■ Z: latching / no letter means momentary
 Lamp color Δ R G Y B W
 Lamp voltage ▲ 5-6V / 12-24V
 Crust material Stainless steel
 Terminal Type Pin Terminal(4.8 0.8mm)
 LED Terminal(2.8 0.5mm)
 Sealing degree※ no letter means IP40 / FP:IP67
Applicable accessories seal cover M12-19F / protect cover T21-19



X-ON Electronics

Largest Supplier of Electrical and Electronic Components

Click to view similar products for [Pushbutton Switches](#) category:

Click to view products by [Onpow](#) manufacturer:

Other Similar products are found below :

[8971K1133](#) [LW2L-M1C20M-A](#) [01-153.025](#) [M22-D-R-GB0/K11](#) [67021K512](#) [701PB580](#) [7199K101](#) [810K12910](#) [810KSV30B](#) [FLT 2U EE](#)
[01A](#) [MML21EA2ADK](#) [MML21KA3ABK](#) [MML23KW3AA01W](#) [8418K2](#) [8442K3](#) [8450K1](#) [860K11911T01A](#) [861901](#) [861K11911T01A07](#)
[861K13810T00A14](#) [861K13911](#) [8646AB6X718UL](#) [9533CD4+U574+U4922](#) [99-450.837](#) [99-453.837](#) [A2PMA1X03EC56](#) [A3A-7310](#) [A3A-](#)
[7340](#) [12037A2ULCSA](#) [1203A2UL](#) [ABGW410-R](#) [1211390004](#) [ABN400-R](#) [121382](#) [1213C3](#) [HE3B-M2](#) [1211500044](#) [121194](#) [1212MRA](#)
[1232A6NF](#) [121489](#) [1223A2ULCSA](#) [D5P-MT4](#) [13435AG](#) [13445AD29GX768](#) [AG23-L2](#) [AH165-2SGLG1TE3](#) [AH165-TGFY22](#) [AH165-](#)
[TGL5Y11E3](#) [AH165-TGLR11AA3](#)