

ONPOW6312 Series

- ☆ The mounting aperture diameter is 12mm
- ☆ Switch is "self-locking/slow-action/single-throw"
- ☆ Two kinds of heads are available, flat and high head
- ☆ IP degree IP65/IP67



ONPOW6312 Series model description

ONPOW6312★-□◇/J/△/▲/◎/※

Symbol	Symbol name	Specify
★	Front shape	F: Flat Round / H: High Round
□	Contact structure	10: 1NO / No letter means indicator
■	Operation type	Z: Latching / No letter means Momentary
◇	Lamp type	E: ○ Ring / No letter means without lamp
◆	Connect type	J: Pin terminal
△	Lamp color	R: Red / G: Green / Y: Yellow / B: Blue / W: White
▲	Lamp voltage	6V / 12V / 24V with internal resistor, Other voltage levels can be customized
◎	Shell material	S: stainless steel / A: Aluminium alloy(black)
※	IP Degree	No letter means IP65 / FP: IP67

Note: please carefully read the specific description of the product and select the corresponding code in the table according to different symbols.

Performance Characteristic

Operating temperature	-25°C~+55°C(no freezing) keep the air flowing around illuminated push button
Operation Humidity	45~85%RH (no condensation)
Contact Resistor	≤50mΩ
Insulation Resistor	≥100MΩ(500VDC)
Maximum withstand voltage	1500VAC, 50Hz, 1min
Vibration Resistance	50Hz, Amplitude 1.2mm
Solder Heat Resistance	320°C 3s
Switch rating	2A/36VDC
Mechanical Life	≥50K cycles
Electrical Life	≥20K cycles
Base material	PA
Nut Torque	around 0.3Nm
Operation Travel	around 1.5N
Operation Pressure	around 1.5mm
Protecting level	IP65(IP67 can be made),IK07

Switching Operation

Type	Diagram	Sign
X		

Lamp ratings

LED Life	Rated Current	Voltage fluctuation	Lamp Circuit Diagram
≥40000 hours	≤24V about 15mA	DC: 1 0%	<p>Use inner protection resistors and no positive or negative distinction.</p>

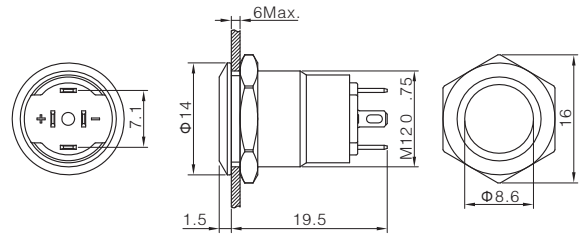
Terminal Description

	<p>+/- are lamp terminals, the standard LED have no difference of anode and cathode, lamp and switch are relatively independent and can use switch or peripheral circuit to control the lamp state</p>
--	--

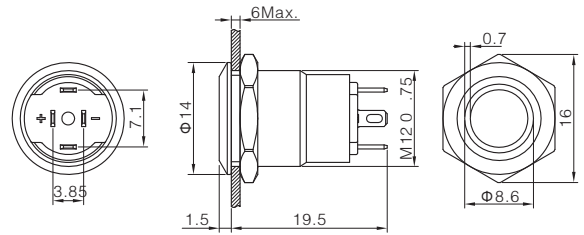
Product Picture	Description	Dimension
-----------------	-------------	-----------



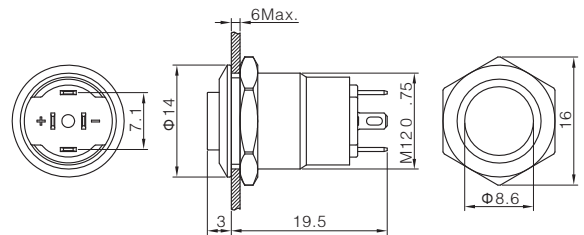
Contact structure 1NO
 Operation type ■ Z: Latching / No letter means momentary
 Shell material Stainless steel
 Tail configuration Terminal pins(2*0.5mm)
 IP degree ※ No letter means IP65 / FP: IP67
 Applicable accessory M12-12F



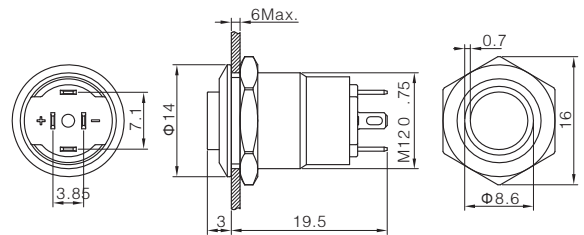
Contact structure 1NO
 Operation type ■ Z: Latching / No letter means momentary
 LED color Δ R G Y B W
 LED voltage ▲ 6V / 12V / 24V
 Shell material Stainless steel
 Tail configuration Terminal pins(2*0.5mm)
 IP degree ※ No letter means IP65 / FP: IP67
 Applicable accessory M12-12F



Contact structure 1NO
 Operation type ■ Z: Latching / No letter means momentary
 Shell material Stainless steel
 Tail configuration Terminal pins(2*0.5mm)
 IP degree ※ No letter means IP65 / FP: IP67
 Applicable accessory M12-12F



Contact structure 1NO
 Operation type ■ Z: Latching / No letter means momentary
 LED color Δ R G Y B W
 LED voltage ▲ 6V / 12V / 24V
 Shell material Stainless steel
 Tail configuration Terminal pins(2*0.5mm)
 IP degree ※ No letter means IP65 / FP: IP67
 Applicable accessory M12-12F



X-ON Electronics

Largest Supplier of Electrical and Electronic Components

Click to view similar products for [Pushbutton Switches](#) category:

Click to view products by [Onpow](#) manufacturer:

Other Similar products are found below :

[8971K1133](#) [LW2L-M1C20M-A](#) [01-153.025](#) [M22-D-R-GB0/K11](#) [67021K512](#) [701PB580](#) [7199K101](#) [810K12910](#) [810KSV30B](#) [FLT 2U EE](#)
[01A](#) [MML21EA2ADK](#) [MML21KA3ABK](#) [MML23KW3AA01W](#) [8418K2](#) [8442K3](#) [8450K1](#) [860K11911T01A](#) [861901](#) [861K11911T01A07](#)
[861K13810T00A14](#) [861K13911](#) [8646AB6X718UL](#) [9533CD4+U574+U4922](#) [99-450.837](#) [99-453.837](#) [A2PMA1X03EC56](#) [A3A-7310](#) [A3A-](#)
[7340](#) [12037A2ULCSA](#) [1203A2UL](#) [ABGW410-R](#) [1211390004](#) [ABN400-R](#) [121382](#) [1213C3](#) [HE3B-M2](#) [1211500044](#) [121194](#) [1212MRA](#)
[1232A6NF](#) [121489](#) [1223A2ULCSA](#) [D5P-MT4](#) [13435AG](#) [13445AD29GX768](#) [AG23-L2](#) [AH165-2SGLG1TE3](#) [AH165-TGFY22](#) [AH165-](#)
[TGL5Y11E3](#) [AH165-TGLR11AA3](#)