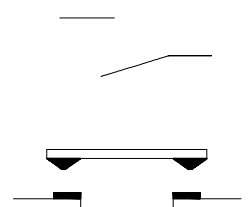


PANEL CUTOUT  
MAX. PANEL THICKNESS  
6 mm

Seal Ring

Switching Operation



SPECIFICATIONS:

1. Switch Rating: AC220V/0.5A, DC36V/2A.
2. Mechanical Life: ≥1,000,000cycles.
3. Electrical Life: ≥200,000cycles(DC 36V);  
≥50,000cycles(AC 220V).
4. Contact Resistance: ≤50mΩ.
5. Insulation Resistance: ≥1,000MΩ.
6. Dielectric Strength: 1,500V, RMS 50Hz, 1min.
7. Operating Temperature: -25°C~ +55°C(No Freezing).
8. Operating Force: About 4N.
9. Operating Travel: About 2mm.
10. Torque: About 0.6Nm max.applied to nut.
11. Protection degree: IP65,IP67(made to order);IK08.
12. Terminal Type: LED Pin (Silver plated brass 2 x 0.5mm);  
Switch Pin (Gold plated brass 2 x 0.5mm).

MATERIALS:

1. Contact: Silver alloy.
2. Button: ☉.
3. Body: ☉.
4. Base: PA.

The shaded part is illuminated

FOR 客户名称	APPROVED 客户确认签字	ATTN 销售负责人

Part Number:GQ16B-10D/J/△/▲/◎

"△"	Lamp Color	"▲"	Lamp Voltage	"◎"	Crust Material
R	Red	6V	AC/DC 6V	N	Nickel Plated Brass
G	Green	12V	AC/DC 12V	S	Stainless Steel
Y	Yellow	24V	AC/DC 24V	A	Al alloy(black)
B	Blue	220V	AC/DC 220V		
W	White	Other voltage can be made to order			

BRAND 品牌 <b>ONPOW</b>		红波按钮制造有限公司 ONPOW PUSH BUTTON MANUFACTURE CO.,LTD.			
THESE DRAWINGS AND SPECIFICATIONS ARE THE PROPERTY OF ONPOW PUSH BUTTON MANUFACTURE CO.,LTD. AND SHALL NOT BE REPRODUCED COPIED OR USED IN ANY MANNER WITHOUT THE PRIOR WRITTEN CONSENT OF ONPOW PUSH BUTTON MANUFACTURE CO.,LTD.		USED 用途	APPD 审核	CH	2019/09/20
		FINISH 处理	CHKD 校对	NCH	2019/09/20
		SCALE 比例	1.5 / 1	UNIT 单位	mm
		DR. 制图	ZPD	2019/09/20	
DIMENSIONS		TOLERANCE		TITLE 名称	
0.00 TO 18.00mm		±0.43mm		GQ Series Anti-vandal push button	
18.01 TO 30.00mm		±0.52mm		DWG NO. 图号	
30.01 TO 50.00mm		±0.62mm		GQ16B-10D-J	
50.01 TO 80.00mm		±0.74mm		SIZE 图纸	
		FILE NAME 档案名称		SHEET 张	1 / 1
		GQ16B-10DJ.dwg		REV. 更改	1

## X-ON Electronics

Largest Supplier of Electrical and Electronic Components

*Click to view similar products for [Pushbutton Switches](#) category:*

*Click to view products by [Onpow](#) manufacturer:*

Other Similar products are found below :

[LW1L-M1C10V-A](#) [LW2L-A1C20M-GD](#) [LW2L-M1C20M-A](#) [60324L](#) [M7E-HRN2](#) [67021K512](#) [67081K512X](#) [701PB580](#) [719-5504-000](#)  
[MDPSSGLFS](#) [810KSV30B](#) [FLT 2U EE 01A](#) [MML21KA3ABK](#) [MML23KA3AC05K-001](#) [MML23KW3AA01W](#) [8418K2](#) [8646AB6X718UL](#)  
[8646ABUL](#) [FSDWH](#) [9001KXRK](#) [9001T8BK](#) [9533CD4+U574+U4922](#) [1203MRA](#) [A22EM01S](#) [A595](#) [1202A6](#) [12037A2ULCSA](#) [1203A2UL](#)  
[ABD122N-B](#) [1211390004](#) [ABN111-Y](#) [ABN400-R](#) [1211500044](#) [1211580012](#) [1212MRA](#) [1232A6NF](#) [RA3CSH6A](#) [1241.1183.7047](#)  
[1241.2511](#) [1241.3428](#) [1223A2ULCSA](#) [1223MRA](#) [1232AX2119](#) [1241.1183.8000](#) [1241.1183.8029](#) [1241.2506](#) [1241.2606](#) [12MA6](#)  
[1301940184](#) [RELBARF6X10\(PLASTIC\)](#)