

# 7SB3257

## Mux / Demux Bus Switch

The 7SB3257 Mux / Demux Bus Switch is an advanced high-speed line switch in ultra-small footprint.

### Features

- High Speed:  $t_{PD} = 0.25$  ns (Max) @  $V_{CC} = 4.5$  V
- $3 \Omega$  Switch Connection Between 2 Ports
- Power Down Protection Provided on Inputs
- Ultra-Small Packages
- NLV Prefix for Automotive and Other Applications Requiring Unique Site and Control Change Requirements; AEC-Q100 Qualified and PPAP Capable
- These Devices are Pb-Free, Halogen Free/BFR Free and are RoHS Compliant

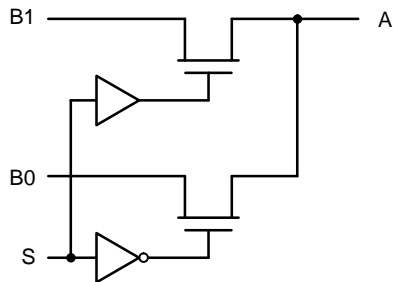


Figure 1. Logic Diagram

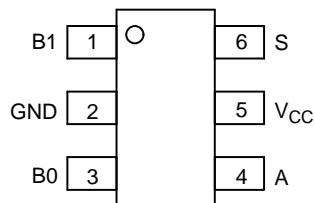


Figure 2. TSOP-6/SC-88 (Top View)

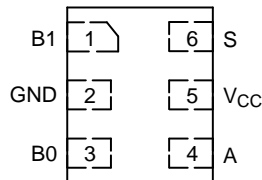


Figure 3. ULLGA6/UDFN6 (Top View)

### Function Table

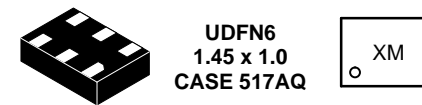
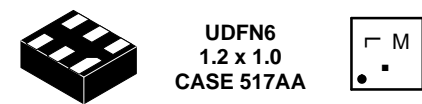
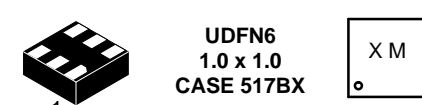
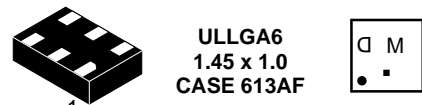
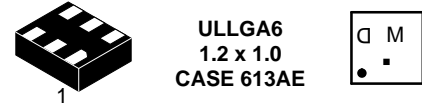
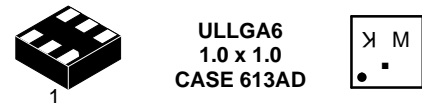
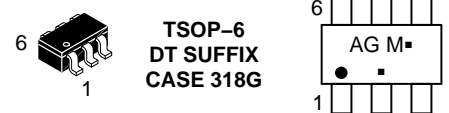
| Input S | Function |
|---------|----------|
| L       | A = B0   |
| H       | A = B1   |



**ON Semiconductor®**

<http://onsemi.com>

### MARKING DIAGRAMS



AK, AG, K, D, L = Specific Device Code  
M = Date Code  
▪ = Pb-Free Package

(Note: Microdot may be in either location)

### ORDERING INFORMATION

See detailed ordering and shipping information in the package dimensions section on page 4 of this data sheet.

Table 1. MAXIMUM RATINGS

| Symbol        | Parameter  | Value                | Unit          |
|---------------|--|----------------------|---------------|
| $V_{CC}$      | DC Supply Voltage  | -0.5 to +7.0         | V             |
| $V_{IN}$      | Control Pin Input Voltage  | -0.5 to +7.0         | V             |
| $V_{I/O}$     | Switch Input / Output Voltage  | -0.5 to +7.0         | V             |
| $I_{IK}$      | Control Pin DC Input Diode Current<br>$V_{IN} < GND$   | -50                  | mA            |
| $I_{OK}$      | Switch I/O Port DC Diode Current<br>$V_{I/O} < GND$  | -50                  | mA            |
| $I_O$         | On-State Switch Current  | $\pm 128$            | mA            |
|               | Continuous Current Through $V_{CC}$ or GND   | $\pm 150$            | mA            |
| $I_{CC}$      | DC Supply Current per Supply Pin   | $\pm 150$            | mA            |
| $I_{GND}$     | DC Ground Current per Ground Pin   | $\pm 150$            | mA            |
| $T_{STG}$     | Storage Temperature Range  | -65 to +150          | $^{\circ}C$   |
| $T_L$         | Lead Temperature, 1 mm from Case for 10 Seconds  | 260                  | $^{\circ}C$   |
| $T_J$         | Junction Temperature Under Bias  | 150                  | $^{\circ}C$   |
| $\theta_{JA}$ | Thermal Resistance<br>SC-88 / TSOP-6 (Note 1)<br>ULLGA6/UDFN6  | 333<br>496           | $^{\circ}C/W$ |
| $P_D$         | Power Dissipation in Still Air at 85 $^{\circ}C$<br>SC-88 / TSOP-6 (Note 1)<br>ULLGA6/UDFN6                | 200<br>252           | mW            |
| MSL           | Moisture Sensitivity   | Level 1              |               |
| $F_R$         | Flammability Rating<br>Oxygen Index: 28 to 34  | UL 94 V-0 @ 0.125 in |               |
| $V_{ESD}$     | ESD Withstand Voltage<br>Human Body Mode (Note 2)<br>Machine Mode (Note 3)<br>Charged Device Mode (Note 4) | >2000<br>>200<br>N/A | V             |
| $I_{LATCHUP}$ | Latchup Performance Above $V_{CC}$ and Below GND at 85 $^{\circ}C$ (Note 5)                                | $\pm 100$            | mA            |

Stresses exceeding those listed in the Maximum Ratings table may damage the device. If any of these limits are exceeded, device functionality should not be assumed, damage may occur and reliability may be affected.

1. Measured with minimum pad spacing on an FR4 board, using 10 mm-by-1 inch, 2 ounce copper trace no air flow.
2. Tested to EIA/ JESD22-A114-A
3. Tested to EIA/ JESD22-A115-A
4. Tested to JESD22-C101-A
5. Tested to EIA / JESD78.

Table 2. RECOMMENDED OPERATING CONDITIONS

| Symbol                | Parameter   | Min    | Max     | Unit        |
|-----------------------|---|--------|---------|-------------|
| $V_{CC}$              | Positive DC Supply Voltage  | 4.0    | 5.5     | V           |
| $V_I$                 | Control Pin Input Voltage   | 0      | 5.5     | V           |
| $V_{I/O}$             | Switch Input / Output Voltage                                     | 0      | 5.5     | V           |
| $T_A$                 | Operating Free-Air Temperature                                    | -55    | +125    | $^{\circ}C$ |
| $\Delta t / \Delta V$ | Input Transition Rise or Fall Rate<br>Control Input<br>Switch I/O | 0<br>0 | 5<br>DC | nS/V        |

Functional operation above the stresses listed in the Recommended Operating Ranges is not implied. Extended exposure to stresses beyond the Recommended Operating Ranges limits may affect device reliability.

Table 3. DC ELECTRICAL CHARACTERISTICS

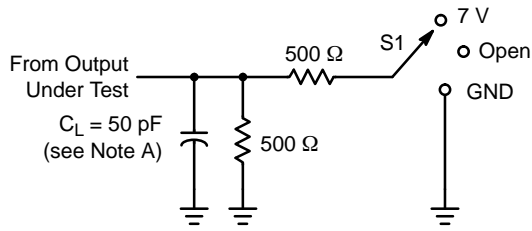
| Symbol           | Parameter                                | Conditions  | V <sub>CC</sub> (V) | T <sub>A</sub> = 25°C |        |        | T <sub>A</sub> = -55°C to +125°C |        | Unit |
|------------------|--|---|---------------------|-----------------------|--------|--------|----------------------------------|--------|------|
|                  |  |   |                     | Min                   | Typ    | Max    | Min                              | Max    |      |
| V <sub>IK</sub>  | Clamp Diode Voltage                      | I <sub>IN</sub> = -18 mA  | 4.5                 |                       |        | -1.2   |                                  | -1.2   | V    |
| V <sub>IH</sub>  | High-Level Input Voltage (Control)       |   | 4.0 to 5.5          | 2.0                   |        |        | 2.0                              |        | V    |
| V <sub>IL</sub>  | Low-Level Input Voltage (Control)        |   | 4.0 to 5.5          |                       |        | 0.8    |                                  | 0.8    | V    |
| I <sub>IN</sub>  | Input Leakage Current                    | 0 ≤ V <sub>IN</sub> ≤ 5.5 V   | 5.5                 |                       |        | ±0.1   |                                  | ±1.0   | μA   |
| I <sub>OFF</sub> | Power Off Leakage Current                | V <sub>I/O</sub> = 0 to 5.5 V   | 0                   |                       |        | ±0.1   |                                  | ±1.0   | μA   |
| I <sub>CC</sub>  | Quiescent Supply Current                 | I <sub>O</sub> = 0, V <sub>IN</sub> = V <sub>CC</sub> or 0 V                  | 5.5                 |                       |        | ±0.1   |                                  | ±1.0   | μA   |
| ΔI <sub>CC</sub> | Increase in Supply Current (Control Pin) | One input at 3.4 V; Other inputs at V <sub>CC</sub> or GND                    | 5.5                 |                       |        |        |                                  | 2.5    | mA   |
| R <sub>ON</sub>  | Switch ON Resistance                     | V <sub>I/O</sub> = 0,<br>I <sub>I/O</sub> = 64 mA<br>I <sub>I/O</sub> = 30 mA | 4.5                 |                       | 3<br>3 | 7<br>7 |                                  | 7<br>7 | Ω    |
|                  |  | V <sub>I/O</sub> = 2.4,<br>I <sub>I/O</sub> = 15 mA                           | 4.5                 |                       | 6      | 15     |                                  | 15     |      |
|                  |  | V <sub>I/O</sub> = 2.4,<br>I <sub>I/O</sub> = 15 mA                           | 4.0                 |                       | 10     | 20     |                                  | 20     |      |

Product parametric performance is indicated in the Electrical Characteristics for the listed test conditions, unless otherwise noted. Product performance may not be indicated by the Electrical Characteristics if operated under different conditions.

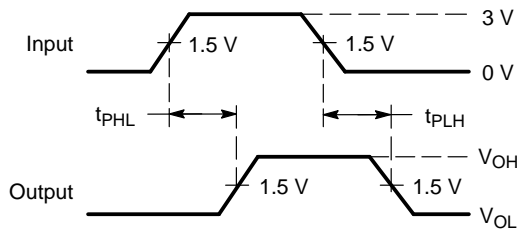
Table 4. AC ELECTRICAL CHARACTERISTICS

| Symbol               | Parameter                           | V <sub>CC</sub> (V) | Test Condition | T <sub>A</sub> = 25°C      |     |      | T <sub>A</sub> = -55°C to +125°C |      | Unit |
|----------------------|-------------------------------------|---------------------|----------------|----------------------------|-----|------|----------------------------------|------|------|
|                      |                                     |                     |                | Min                        | Typ | Max  | Min                              | Max  |      |
| t <sub>PD</sub>      | Propagation Delay, A to B or B to A | 4.0 to 5.5          | See Figure 4   |                            |     | 0.25 |                                  | 0.25 | ns   |
| t <sub>EN</sub>      | Output Enable Time                  | 4.5 to 5.5          |                | 0.8                        | 2.5 | 4.2  | 0.8                              | 4.2  | ns   |
|                      |                                     | 4.0                 |                | 0.8                        | 3.0 | 4.6  | 0.8                              | 4.6  |      |
| t <sub>DIS</sub>     | Output Disable Time                 | 4.5 to 5.5          |                | 0.8                        | 3.1 | 4.8  | 0.8                              | 4.8  | ns   |
|                      |                                     | 4.0                 |                | 0.8                        | 2.9 | 4.4  | 0.8                              | 4.4  |      |
| C <sub>IN</sub>      | Control Input Capacitance           | 5.0                 |                | V <sub>IN</sub> = 3 V or 0 |     | 2.0  |                                  |      |      |
| C <sub>IO(ON)</sub>  | Switch On Capacitance               | 5.0                 | Switch ON      |                            | 10  |      |                                  |      | pF   |
| C <sub>IO(OFF)</sub> | Switch Off Capacitance              | 5.0                 | Switch OFF     |                            | 3.5 |      |                                  |      | pF   |

AC Loading and Waveforms

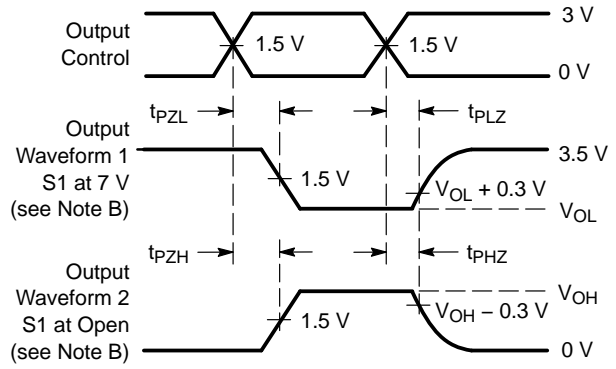


LOAD CIRCUIT



VOLTAGE WAVEFORMS PROPAGATION DELAY TIMES

| TEST              | S1   |
|-------------------|------|
| $t_{PD}$          | Open |
| $t_{PLZ}/t_{PZL}$ | 7 V  |
| $t_{PHZ}/t_{PZH}$ | GND  |



VOLTAGE WAVEFORMS ENABLE AND DISABLE TIMES

- A.  $C_L$  includes probe and jig capacitance.
- B. Waveform 1 is for an output with internal conditions such that the output is low, except when disabled by the output control. Waveform 2 is for an output with internal conditions such that the output is high, except when disabled by the output control.
- C. All input pulses are supplied by generators having the following characteristics: PRR  $\leq$  10 MHz,  $Z_O = 50 \Omega$ ,  $t_r \leq 2.5$  ns,  $t_f \leq 2.5$  ns.
- D. The output is measured with one input transition per measurement.
- E.  $t_{PLZ}$  and  $t_{PHZ}$  are the same as  $t_{dis}$ .
- F.  $t_{PZL}$  and  $t_{PZH}$  are the same as  $t_{en}$ .
- G.  $t_{PLH}$  and  $t_{PHL}$  are the same as  $t_{pd}$ .

Figure 4. Load Circuit and Voltage Waveforms

DEVICE ORDERING INFORMATION

| Device           | Package                                | Shipping <sup>†</sup> |
|------------------|--|-----------------------|
| 7SB3257DTT1G     | TSOP-6<br>(Pb-Free)                    | 3000 / Tape & Reel    |
| NLV7SB3257DTT1G* |  |                       |
| 7SB3257DTT2G     |  |                       |
| 7SB3257DFT2G     | SC-88<br>(Pb-Free)                     | 3000 / Tape & Reel    |
| 7SB3257AMX1TCG   | ULLGA6 – 1.45 x 1.0, 0.5P<br>(Pb-Free) | 3000 / Tape & Reel    |
| 7SB3257BMX1TCG   | ULLGA6 – 1.2 x 1.0, 0.4P<br>(Pb-Free)  | 3000 / Tape & Reel    |
| 7SB3257CMX1TCG   | ULLGA6 – 1.0 x 1.0, 0.35P<br>(Pb-Free) | 3000 / Tape & Reel    |
| 7SB3257MU1TCG    | UDFN6 – 1.45 x 1.0, 0.5P<br>(Pb-Free)  | 3000 / Tape & Reel    |
| 7SB3257MUTCG     | UDFN6 – 1.2 x 1.0, 0.4P<br>(Pb-Free)   | 3000 / Tape & Reel    |
| 7SB3257MU3TCG    | UDFN6 – 1.0 x 1.0, 0.35P<br>(Pb-Free)  | 3000 / Tape & Reel    |

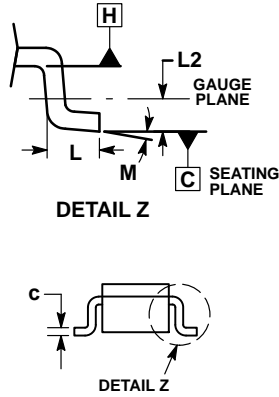
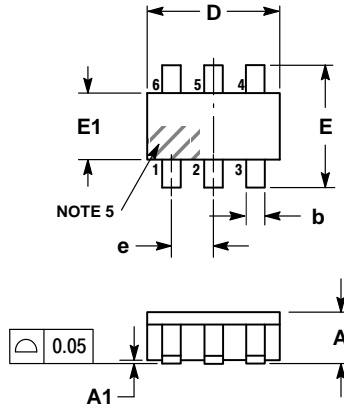
<sup>†</sup>For information on tape and reel specifications, including part orientation and tape sizes, please refer to our Tape and Reel Packaging Specifications Brochure, BRD8011/D.

\*NLV Prefix for Automotive and Other Applications Requiring Unique Site and Control Change Requirements; AEC-Q100 Qualified and PPAP Capable.

# 7SB3257

## PACKAGE DIMENSIONS

TSOP-6  
CASE 318G-02  
ISSUE U

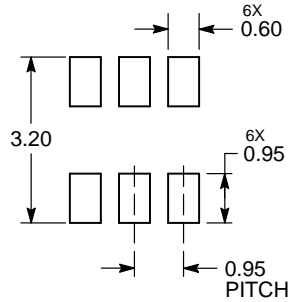


**NOTES:**

1. DIMENSIONING AND TOLERANCING PER ASME Y14.5M, 1994.
2. CONTROLLING DIMENSION: MILLIMETERS.
3. MAXIMUM LEAD THICKNESS INCLUDES LEAD FINISH. MINIMUM LEAD THICKNESS IS THE MINIMUM THICKNESS OF BASE MATERIAL.
4. DIMENSIONS D AND E1 DO NOT INCLUDE MOLD FLASH, PROTRUSIONS, OR GATE BURRS. MOLD FLASH, PROTRUSIONS, OR GATE BURRS SHALL NOT EXCEED 0.15 PER SIDE. DIMENSIONS D AND E1 ARE DETERMINED AT DATUM H.
5. PIN ONE INDICATOR MUST BE LOCATED IN THE INDICATED ZONE.

| DIM | MILLIMETERS |      |      |
|-----|-------------|------|------|
|     | MIN         | NOM  | MAX  |
| A   | 0.90        | 1.00 | 1.10 |
| A1  | 0.01        | 0.06 | 0.10 |
| b   | 0.25        | 0.38 | 0.50 |
| c   | 0.10        | 0.18 | 0.26 |
| D   | 2.90        | 3.00 | 3.10 |
| E   | 2.50        | 2.75 | 3.00 |
| E1  | 1.30        | 1.50 | 1.70 |
| e   | 0.85        | 0.95 | 1.05 |
| L   | 0.20        | 0.40 | 0.60 |
| L2  | 0.25 BSC    |      |      |
| M   | 0°          | -    | 10°  |

### RECOMMENDED SOLDERING FOOTPRINT\*



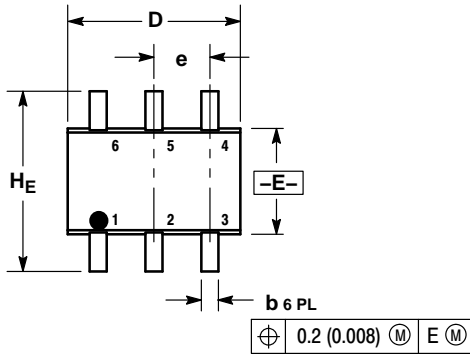
DIMENSIONS: MILLIMETERS

\*For additional information on our Pb-Free strategy and soldering details, please download the ON Semiconductor Soldering and Mounting Techniques Reference Manual, SOLDERRM/D.

# 7SB3257

## PACKAGE DIMENSIONS

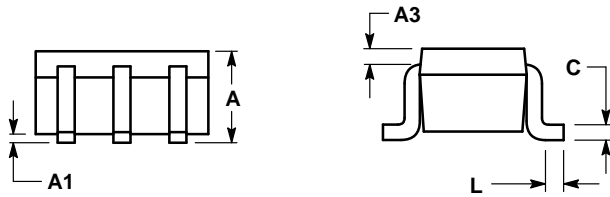
SC-88/SC70-6/SOT-363  
CASE 419B-02  
ISSUE W



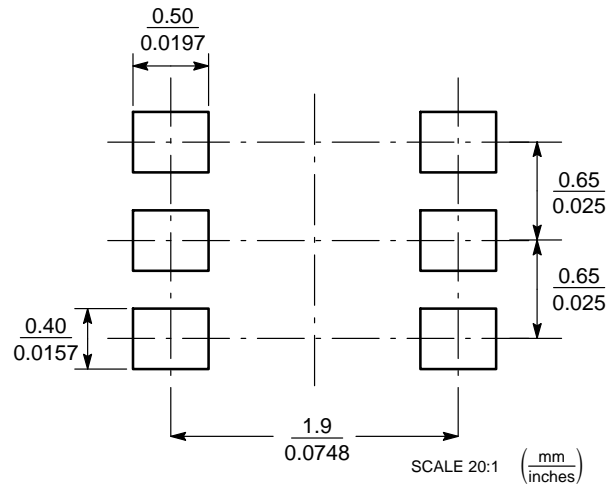
NOTES:

1. DIMENSIONING AND TOLERANCING PER ANSI Y14.5M, 1982.
2. CONTROLLING DIMENSION: INCH.
3. 419B-01 OBSOLETE, NEW STANDARD 419B-02.

| DIM | MILLIMETERS |      |      | INCHES    |       |       |
|-----|-------------|------|------|-----------|-------|-------|
|     | MIN         | NOM  | MAX  | MIN       | NOM   | MAX   |
| A   | 0.80        | 0.95 | 1.10 | 0.031     | 0.037 | 0.043 |
| A1  | 0.00        | 0.05 | 0.10 | 0.000     | 0.002 | 0.004 |
| A3  | 0.20 REF    |      |      | 0.008 REF |       |       |
| b   | 0.10        | 0.21 | 0.30 | 0.004     | 0.008 | 0.012 |
| C   | 0.10        | 0.14 | 0.25 | 0.004     | 0.005 | 0.010 |
| D   | 1.80        | 2.00 | 2.20 | 0.070     | 0.078 | 0.086 |
| E   | 1.15        | 1.25 | 1.35 | 0.045     | 0.049 | 0.053 |
| e   | 0.65 BSC    |      |      | 0.026 BSC |       |       |
| L   | 0.10        | 0.20 | 0.30 | 0.004     | 0.008 | 0.012 |
| HE  | 2.00        | 2.10 | 2.20 | 0.078     | 0.082 | 0.086 |



### SOLDERING FOOTPRINT\*

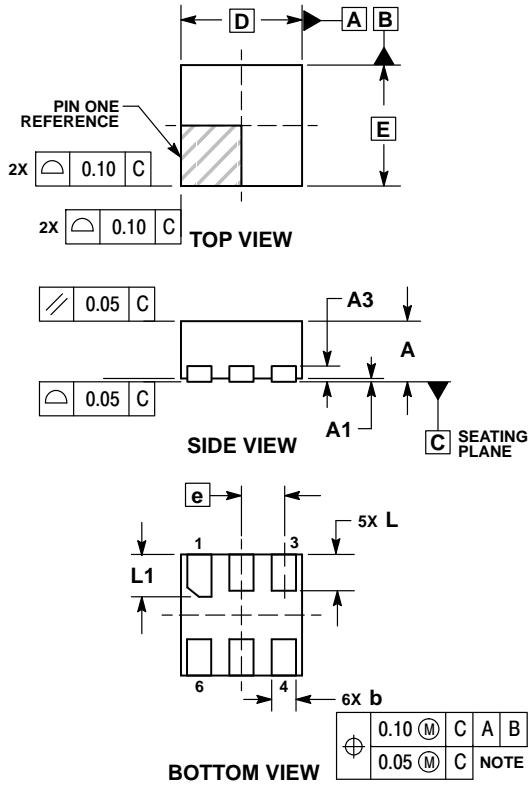


\*For additional information on our Pb-Free strategy and soldering details, please download the ON Semiconductor Soldering and Mounting Techniques Reference Manual, SOLDERRM/D.

# 7SB3257

## PACKAGE DIMENSIONS

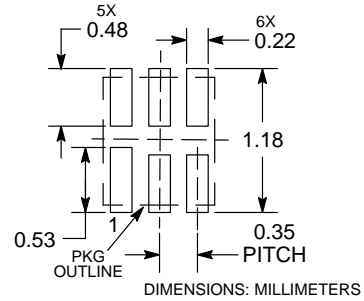
UDFN6 1.0x1.0, 0.35P  
CASE 517BX  
ISSUE O



- NOTES:
1. DIMENSIONING AND TOLERANCING PER ASME Y14.5M, 1994.
  2. CONTROLLING DIMENSION: MILLIMETERS.
  3. DIMENSION  $b$  APPLIES TO PLATED TERMINAL AND IS MEASURED BETWEEN 0.15 AND 0.20 MM FROM TERMINAL TIP.
  4. PACKAGE DIMENSIONS EXCLUSIVE OF BURRS AND MOLD FLASH.

| DIM | MILLIMETERS |      |
|-----|-------------|------|
|     | MIN         | MAX  |
| A   | 0.45        | 0.55 |
| A1  | 0.00        | 0.05 |
| A3  | 0.13 REF    |      |
| b   | 0.12        | 0.22 |
| D   | 1.00 BSC    |      |
| E   | 1.00 BSC    |      |
| e   | 0.35 BSC    |      |
| L   | 0.25        | 0.35 |
| L1  | 0.30        | 0.40 |

### RECOMMENDED SOLDERING FOOTPRINT\*

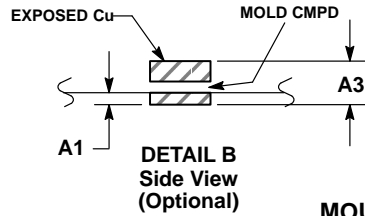
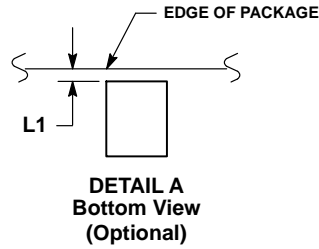
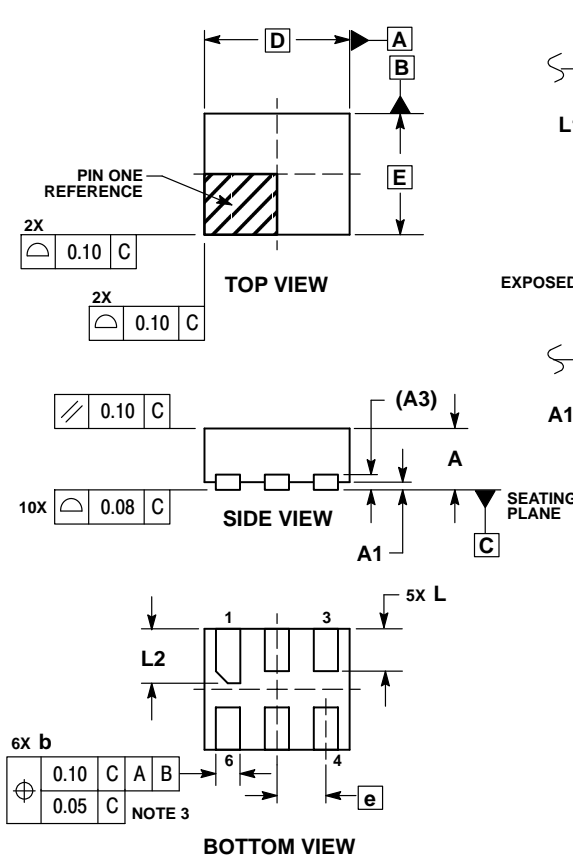


\*For additional information on our Pb-Free strategy and soldering details, please download the ON Semiconductor Soldering and Mounting Techniques Reference Manual, SOLDERRM/D.

# 7SB3257

## PACKAGE DIMENSIONS

UDFN6 1.2x1.0, 0.4P  
CASE 517AA  
ISSUE C

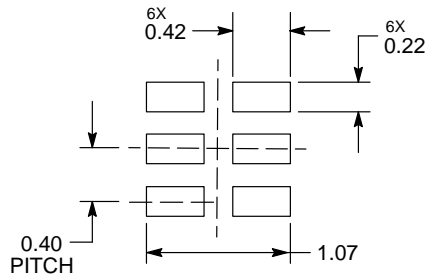


**NOTES:**

1. DIMENSIONING AND TOLERANCING PER ASME Y14.5M, 1994.
2. CONTROLLING DIMENSION: MILLIMETERS.
3. DIMENSION b APPLIES TO PLATED TERMINAL AND IS MEASURED BETWEEN 0.25 AND 0.30 mm FROM TERMINAL.
4. COPLANARITY APPLIES TO THE EXPOSED PAD AS WELL AS THE TERMINALS.

| MILLIMETERS |       |      |
|-------------|-------|------|
| DIM         | MIN   | MAX  |
| A           | 0.45  | 0.55 |
| A1          | 0.00  | 0.05 |
| A3          | 0.127 | REF  |
| b           | 0.15  | 0.25 |
| D           | 1.20  | BSC  |
| E           | 1.00  | BSC  |
| e           | 0.40  | BSC  |
| L           | 0.30  | 0.40 |
| L1          | 0.00  | 0.15 |
| L2          | 0.40  | 0.50 |

**MOUNTING FOOTPRINT\***



DIMENSIONS: MILLIMETERS

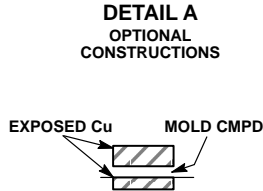
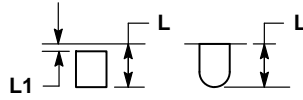
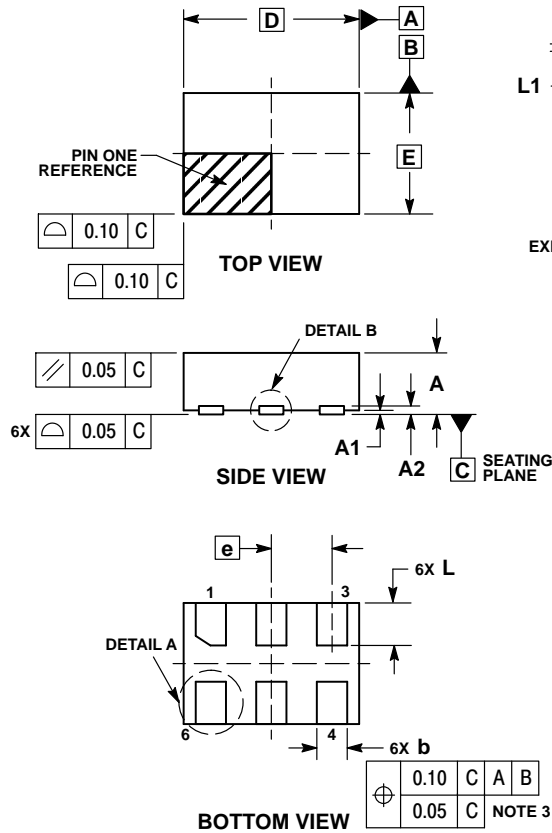
\*For additional information on our Pb-Free strategy and soldering details, please download the ON Semiconductor Soldering and Mounting Techniques Reference Manual, SOLDERRM/D.



# 7SB3257

## PACKAGE DIMENSIONS

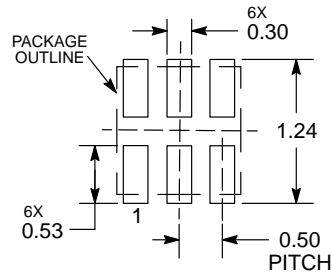
UDFN6 1.45x1.0, 0.5P  
CASE 517AQ  
ISSUE C



- NOTES:
1. DIMENSIONING AND TOLERANCING PER ASME Y14.5M, 1994.
  2. CONTROLLING DIMENSION: MILLIMETERS.
  3. DIMENSION b APPLIES TO PLATED TERMINAL AND IS MEASURED BETWEEN 0.15 AND 0.30 mm FROM THE TERMINAL TIP.

| MILLIMETERS |      |      |
|-------------|------|------|
| DIM         | MIN  | MAX  |
| A           | 0.45 | 0.55 |
| A1          | 0.00 | 0.05 |
| A2          | 0.07 | REF  |
| b           | 0.20 | 0.30 |
| D           | 1.45 | BSC  |
| E           | 1.00 | BSC  |
| e           | 0.50 | BSC  |
| L           | 0.30 | 0.40 |
| L1          | ---  | 0.15 |

### MOUNTING FOOTPRINT



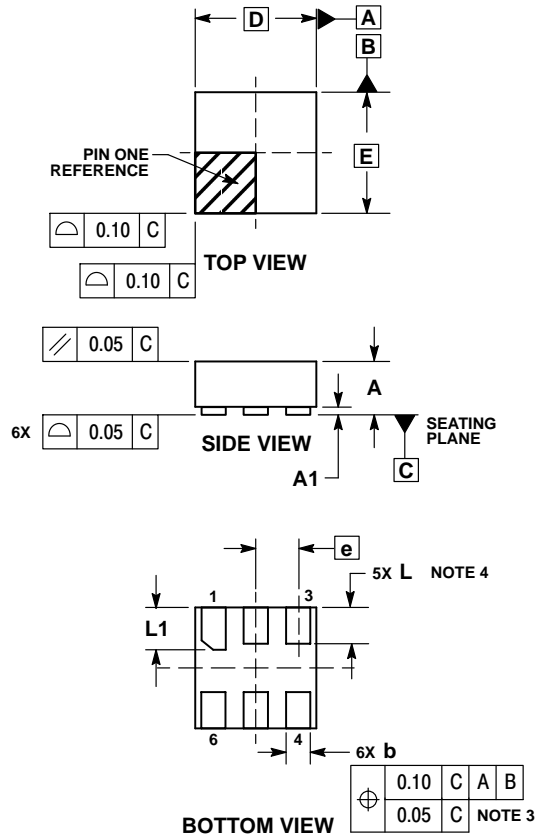
DIMENSIONS: MILLIMETERS

\*For additional information on our Pb-Free strategy and soldering details, please download the ON Semiconductor Soldering and Mounting Techniques Reference Manual, SOLDERRM/D.

# 7SB3257

## PACKAGE DIMENSIONS

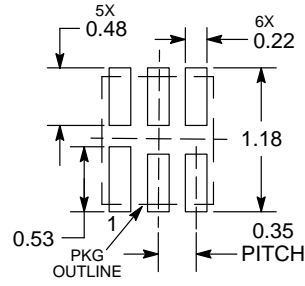
### ULLGA6 1.0x1.0, 0.35P CASE 613AD ISSUE A



- NOTES:
1. DIMENSIONING AND TOLERANCING PER ASME Y14.5M, 1994.
  2. CONTROLLING DIMENSION: MILLIMETERS.
  3. DIMENSION b APPLIES TO PLATED TERMINAL AND IS MEASURED BETWEEN 0.15 AND 0.30 mm FROM THE TERMINAL TIP.
  4. A MAXIMUM OF 0.05 PULL BACK OF THE PLATED TERMINAL FROM THE EDGE OF THE PACKAGE IS ALLOWED.

| MILLIMETERS |          |      |
|-------------|----------|------|
| DIM         | MIN      | MAX  |
| A           | —        | 0.40 |
| A1          | 0.00     | 0.05 |
| b           | 0.12     | 0.22 |
| D           | 1.00 BSC |      |
| E           | 1.00 BSC |      |
| e           | 0.35 BSC |      |
| L           | 0.25     | 0.35 |
| L1          | 0.30     | 0.40 |

### MOUNTING FOOTPRINT SOLDERMASK DEFINED\*



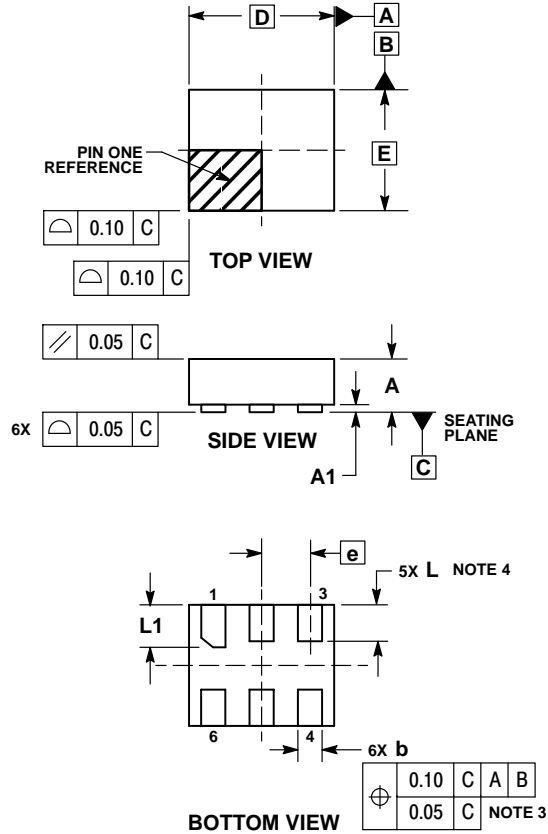
DIMENSIONS: MILLIMETERS

\*For additional information on our Pb-Free strategy and soldering details, please download the ON Semiconductor Soldering and Mounting Techniques Reference Manual, SOLDERRM/D.

# 7SB3257

## PACKAGE DIMENSIONS

ULLGA6 1.2x1.0, 0.4P  
CASE 613AE  
ISSUE A

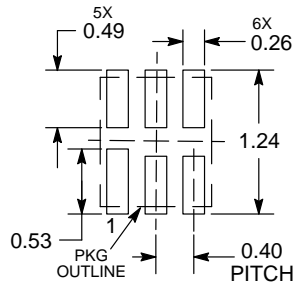


**NOTES:**

1. DIMENSIONING AND TOLERANCING PER ASME Y14.5M, 1994.
2. CONTROLLING DIMENSION: MILLIMETERS.
3. DIMENSION b APPLIES TO PLATED TERMINAL AND IS MEASURED BETWEEN 0.15 AND 0.30 mm FROM THE TERMINAL TIP.
4. A MAXIMUM OF 0.05 PULL BACK OF THE PLATED TERMINAL FROM THE EDGE OF THE PACKAGE IS ALLOWED.

| MILLIMETERS |          |      |
|-------------|----------|------|
| DIM         | MIN      | MAX  |
| A           | ---      | 0.40 |
| A1          | 0.00     | 0.05 |
| b           | 0.15     | 0.25 |
| D           | 1.20 BSC |      |
| E           | 1.00 BSC |      |
| e           | 0.40 BSC |      |
| L           | 0.25     | 0.35 |
| L1          | 0.35     | 0.45 |

**MOUNTING FOOTPRINT  
SOLDERMASK DEFINED\***



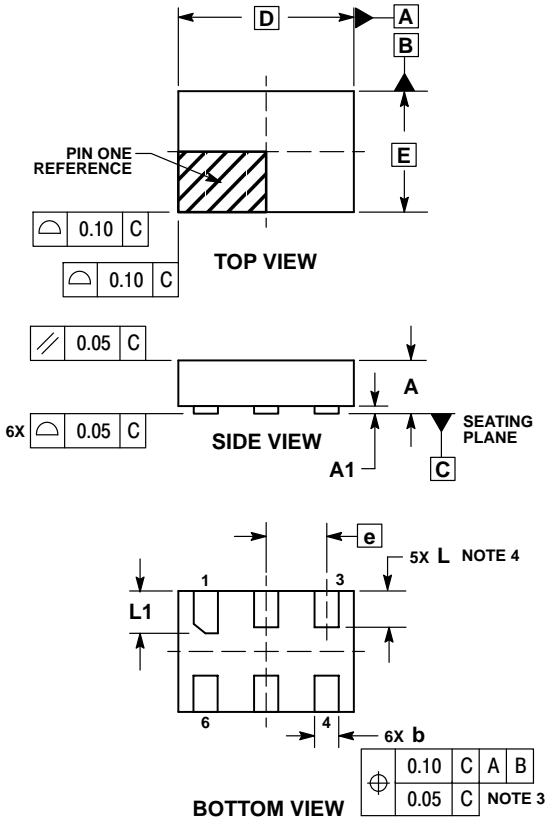
DIMENSIONS: MILLIMETERS

\*For additional information on our Pb-Free strategy and soldering details, please download the ON Semiconductor Soldering and Mounting Techniques Reference Manual, SOLDERRM/D.

# 7SB3257

## PACKAGE DIMENSIONS

ULLGA6 1.45x1.0, 0.5P  
CASE 613AF  
ISSUE A

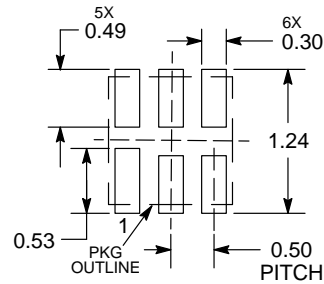


### NOTES:

1. DIMENSIONING AND TOLERANCING PER ASME Y14.5M, 1994.
2. CONTROLLING DIMENSION: MILLIMETERS.
3. DIMENSION b APPLIES TO PLATED TERMINAL AND IS MEASURED BETWEEN 0.15 AND 0.30 mm FROM THE TERMINAL TIP.
4. A MAXIMUM OF 0.05 PULL BACK OF THE PLATED TERMINAL FROM THE EDGE OF THE PACKAGE IS ALLOWED.

| DIM | MILLIMETERS |      |
|-----|-------------|------|
|     | MIN         | MAX  |
| A   | ---         | 0.40 |
| A1  | 0.00        | 0.05 |
| b   | 0.15        | 0.25 |
| D   | 1.45 BSC    |      |
| E   | 1.00 BSC    |      |
| e   | 0.50 BSC    |      |
| L   | 0.25        | 0.35 |
| L1  | 0.30        | 0.40 |

### MOUNTING FOOTPRINT SOLDERMASK DEFINED\*



DIMENSIONS: MILLIMETERS

\*For additional information on our Pb-Free strategy and soldering details, please download the ON Semiconductor Soldering and Mounting Techniques Reference Manual, SOLDERRM/D.

ON Semiconductor and are registered trademarks of Semiconductor Components Industries, LLC (SCILLC). SCILLC reserves the right to make changes without further notice to any products herein. SCILLC makes no warranty, representation or guarantee regarding the suitability of its products for any particular purpose, nor does SCILLC assume any liability arising out of the application or use of any product or circuit, and specifically disclaims any and all liability, including without limitation special, consequential or incidental damages. "Typical" parameters which may be provided in SCILLC data sheets and/or specifications can and do vary in different applications and actual performance may vary over time. All operating parameters, including "Typicals" must be validated for each customer application by customer's technical experts. SCILLC does not convey any license under its patent rights nor the rights of others. SCILLC products are not designed, intended, or authorized for use as components in systems intended for surgical implant into the body, or other applications intended to support or sustain life, or for any other application in which the failure of the SCILLC product could create a situation where personal injury or death may occur. Should Buyer purchase or use SCILLC products for any such unintended or unauthorized application, Buyer shall indemnify and hold SCILLC and its officers, employees, subsidiaries, affiliates, and distributors harmless against all claims, costs, damages, and expenses, and reasonable attorney fees arising out of, directly or indirectly, any claim of personal injury or death associated with such unintended or unauthorized use, even if such claim alleges that SCILLC was negligent regarding the design or manufacture of the part. SCILLC is an Equal Opportunity/Affirmative Action Employer. This literature is subject to all applicable copyright laws and is not for resale in any manner.

### PUBLICATION ORDERING INFORMATION

**LITERATURE FULFILLMENT:**  
Literature Distribution Center for ON Semiconductor  
P.O. Box 5163, Denver, Colorado 80217 USA  
**Phone:** 303-675-2175 or 800-344-3860 Toll Free USA/Canada  
**Fax:** 303-675-2176 or 800-344-3867 Toll Free USA/Canada  
**Email:** orderlit@onsemi.com

**N. American Technical Support:** 800-282-9855 Toll Free  
USA/Canada  
**Europe, Middle East and Africa Technical Support:**  
Phone: 421 33 790 2910  
**Japan Customer Focus Center**  
Phone: 81-3-5817-1050

**ON Semiconductor Website:** [www.onsemi.com](http://www.onsemi.com)

**Order Literature:** <http://www.onsemi.com/orderlit>

For additional information, please contact your local Sales Representative

## X-ON Electronics

Largest Supplier of Electrical and Electronic Components

*Click to view similar products for [Bus Transmitters](#) category:*

*Click to view products by [ON Semiconductor](#) manufacturer:*

Other Similar products are found below :

[NLV7SB3257DTT1G](#) [7SB384MUTCG](#) [7SB384DTT1G](#) [74LVCH162244ADL.112](#) [74LVC541APW.118](#) [74LVC240APW.112](#)  
[74VHCT245AFT\(BJ\)](#) [7SB3126DFT2G](#) [7SB3257DFT2G](#) [7SB384DFT2G](#) [7SB385DFT2G](#) [MC1488D1](#) [SN65LVDS84AQDGGR](#)  
[SN75LVDS83BDGGR](#) [SN75LVDS84ADGGR](#) [7SB3257MUTCG](#) [SN65LVDS84AQDGG](#) [SN75LVDS83ADGG](#) [SN75LVDS83ADGGR](#)  
[SN75LVDS83BZQLR](#) [SN75LVDS83DGG](#) [SN75LVDS83DGGR](#) [SN75LVDS84ADGG](#) [SN75LVDS84DGG](#)