

Evaluation Board User's Manual for High Frequency TSSOP 20



ON Semiconductor®

<http://onsemi.com>

EVAL BOARD USER'S MANUAL

INTRODUCTION

ON Semiconductor has developed an evaluation board for the devices in 20-lead TSSOP package. These evaluation boards are offered as a convenience for the customers interested in performing their own engineering assessment on the general performance of the 20-lead TSSOP device samples. The board provides a high bandwidth 50 Ω controlled impedance environment. Figures 1 and 2 show the top and bottom view of the evaluation board, which can be configured in several different ways, depending on device under test (see Table 1. Configuration List).

This evaluation board manual contains:

- Information on 20-lead TSSOP Evaluation Board
- Assembly Instructions
- Appropriate Lab Setup
- Bill of Materials

This manual should be used in conjunction with the device data sheet, which contains full technical details on the device specifications and operation.

Board Lay-Up

The 20-lead TSSOP evaluation board is implemented in four layers with split (dual) power supplies (see Figure 3. Evaluation Board Lay-Up). For standard ECL lab setup and test, a split (dual) power supply is essential to enable the 50 Ω internal impedance in the oscilloscope as a termination for ECL devices. The first layer or primary trace layer is 0.008" thick Rogers RO4003 material, which is designed to have equal electrical length on all signal traces from the device under the test (DUT) to the sense output. The second layer is the 1.0 oz copper ground. The FR4 dielectric material is placed between second and third layer and between third and fourth layer. The third layer is the power plane (V_{CC} & V_{EE}) and a portion of this layer is a ground plane. The fourth layer is the secondary trace layer.

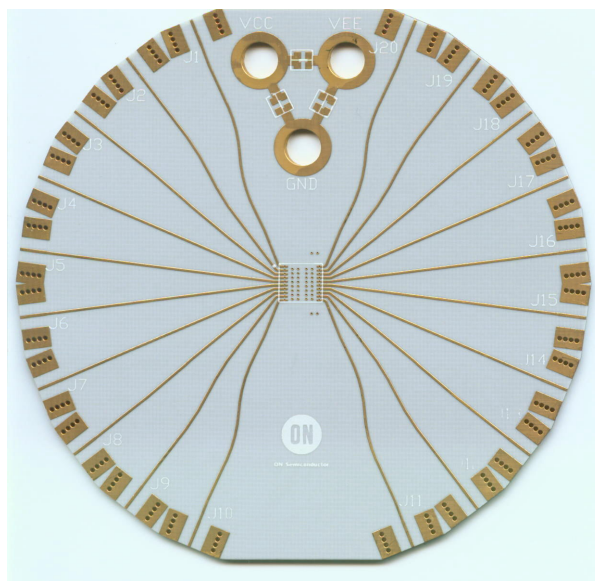
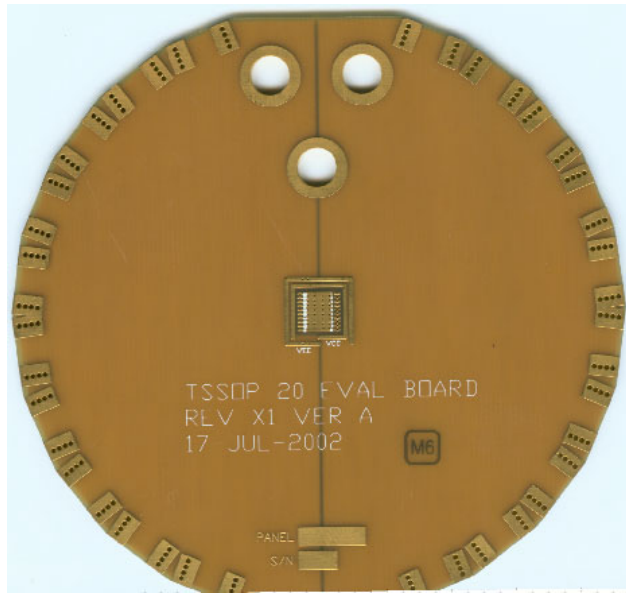
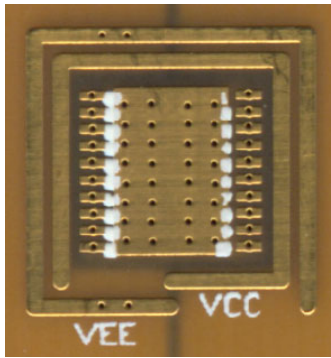


Figure 1. Top View of the 20-lead TSSOP Evaluation Board

ECLTSSOP20EVB



Bottom View



Expanded Bottom View

Figure 2. Bottom View of the 20-lead TSSOP Evaluation Board

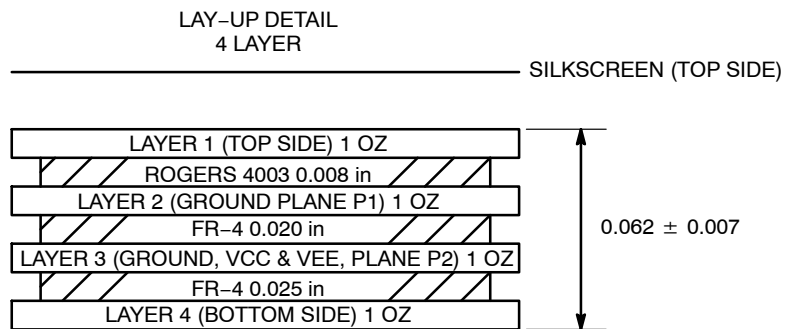


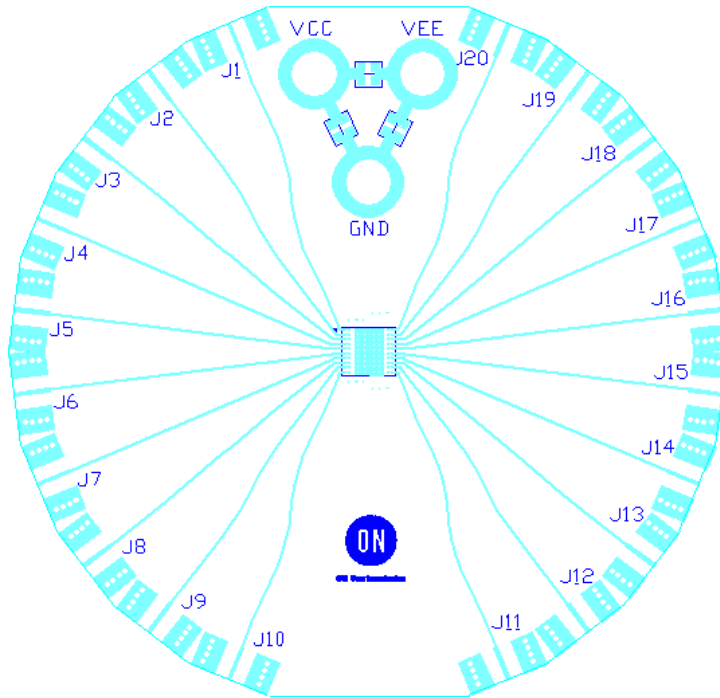
Figure 3. Evaluation Board Lay-up

Board Layout

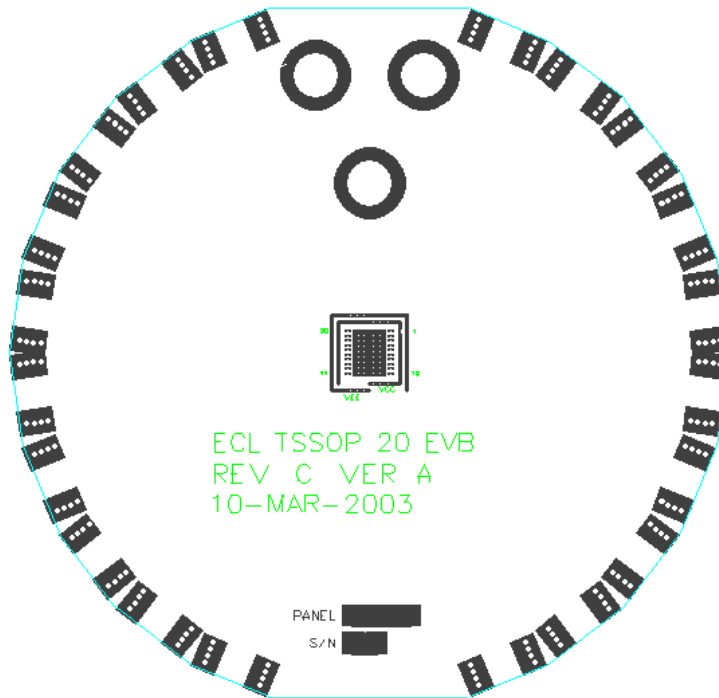
The 20-lead TSSOP evaluation board was designed to be versatile and accommodate several different configurations. The input, output, and power pin layout of the evaluation board is shown in Figures 4 and 5. The evaluation board has at least eight possible configurable options. Table 1, list the devices and the relevant configuration that utilizes this PCB

board. Lists of components and simple schematics are located in Figures 6 through 12. Place SMA connectors on J1 through J20, 50 Ω chip resistors between ground pad and Pin 1 pad through Pin 20 pad, and chip capacitors C1 through C5 according to configuration figures. (C4 and C5 are 0.01 μF and C1, C2, and C3 are 0.1 μF); (See Figure 5).

ECLTSSOP20EVB



Top View



Bottom View

Figure 4. Evaluation Board Layout

ECLTSSOP20EVB

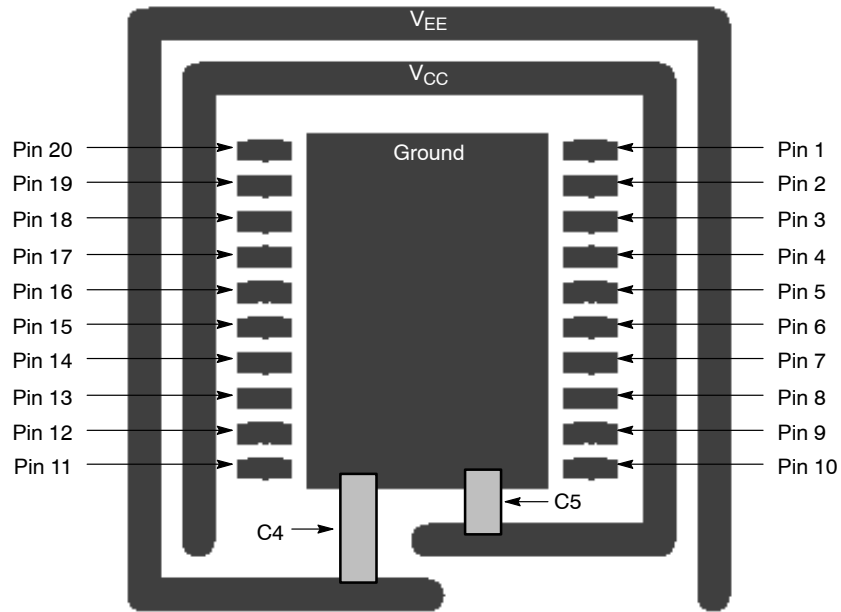


Figure 5. Enlarged Bottom View of the Evaluation Board

Table 1. Configuration List

Configuration	Comments	Device
1	See Figure 6	EP14, LVEP14
2	See Figure 7	EP17, LVEP17
3	See Figure 8	EP29
4	See Figure 9	EP40
5	See Figure 10	EP56, LVEP56
6	See Figure 11	EP57
7	See Figure 12	EP139

Evaluation Board Assembly Instructions

The 20-lead TSSOP evaluation board is designed for characterizing devices in a 50 Ω laboratory environment using high bandwidth equipment. Each signal trace on the board has a via, which has an option of placing a termination resistor depending on the input/output configuration (see Table 1, Configuration List). Table 11 contains the Bill of Materials for this evaluation board.

Solder the Device on the Evaluation Board

The soldering can be accomplished by hand soldering or soldering re-flow techniques. Make sure pin 1 of the device is located next to the white dotted mark and all the pins are aligned to the footprint pads. Solder the 20-lead TSSOP device to the evaluation board.

Connecting Power and Ground Planes

For standard ECL lab setup and test, a split (dual) power supply is required enabling the 50 Ω internal impedance in the oscilloscope to be used as a termination of the ECL signals ($V_{TT} = V_{CC} - 2.0$ V, in split power supply setup, V_{TT} is the system ground, V_{CC} is 2.0 V, and V_{EE} is -3.0 V or -1.3 V; see Table 2, Power Supply Levels).

Table 2. Power Supply Levels

Power Supply	V_{CC}	V_{EE}	GND
5.0 V	2.0 V	-3.0 V	0.0 V
3.3 V	2.0 V	-1.3 V	0.0 V
2.5 V	2.0 V	-0.5 V	0.0 V

Connect three banana jack sockets to V_{CC} , V_{EE} , and GND labeled holes. Wire bond the appropriate device pin pad on the bottom side of the board to V_{CC} and V_{EE} power stripes. (Device specific, please see configuration for each desired device. See Figure 5)

It is recommended to solder 0.01 μ F capacitors to C4 and C5 to reduce the unwanted noise from the power supplies. C1, C2, and C3 pads are provided for 0.1 μ F capacitor to further diminish the noise from the power supplies. Adding capacitors can improve edge rates, reduce overshoot and undershoot.

Termination

All ECL outputs need to be terminated to V_{TT} ($V_{TT} = V_{CC} - 2.0$ V = GND) via a 50 Ω resistor. 0402 chip resistor pads are provided on the bottom side of the evaluation board to terminate the ECL driver (More information on termination is provided in AN8020). Solder the chip resistors to the bottom side of the board between the appropriate input of the device pin pads and the ground pads. For ease of assembly, it is advised to place and solder termination resistors on its vertical (side) position, instead of its original or flat position.

Installing the SMA Connectors

Each configuration indicates the number of SMA connectors needed to populate an evaluation board for a given configuration. Each input and output requires one SMA connector. Attach all the required SMA connectors onto the board and solder the connectors to the board on J1 through J20. Please note that alignment of the signal connector pin of the SMA can influence the lab results. The reflection and launch of the signals are largely influenced by imperfect alignment and soldering of the SMA connector.

Validating the Assembled Board

After assembling the evaluation board, it is recommended to perform continuity checks on all soldered areas before commencing with the evaluation process. Time Domain Reflectometry (TDR) is another highly recommended validation test.

ECLTSSOP20EVB

CONFIGURATIONS

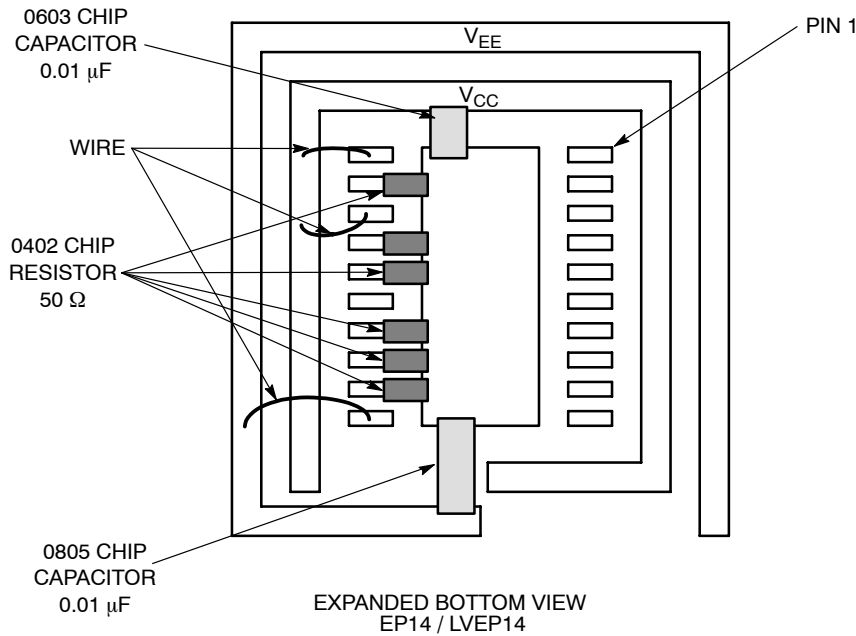
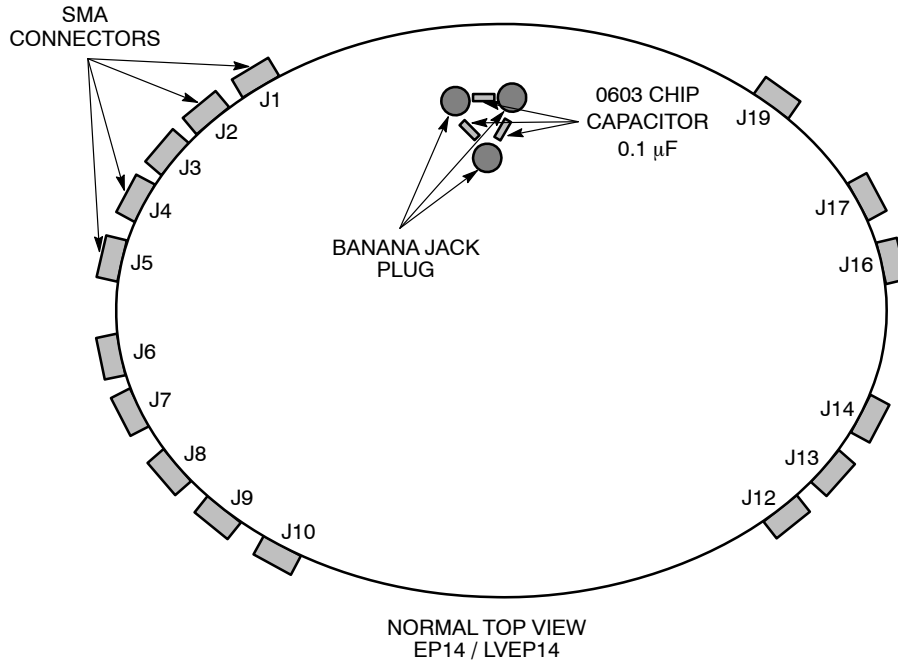


Figure 6. Configuration 1

Table 3. Configuration 1 (Device EP14 and LVEP14)

Device	J1	J2	J3	J4	J5	J6	J7	J8	J9	J10	J11	J12	J13	J14	J15	J16	J17	J18	J19	J20
Pin #	1	2	3	4	5	6	7	8	9	10	11	12	13	14	15	16	17	18	19	20
Connector	Yes	Yes	Yes	Yes	Yes	Yes	Yes	Yes	Yes	Yes	No	Yes	Yes	Yes	Yes	Yes	Yes	No	Yes	No
Resistor	No	No	No	No	No	No	No	No	No	No	No	Yes	Yes	Yes	No	Yes	Yes	No	Yes	No
Power	No	No	No	No	No	No	No	No	No	No	V _{EE}	No	No	No	No	No	No	V _{CC}	No	V _{CC}

ECLTSSOP20EVB

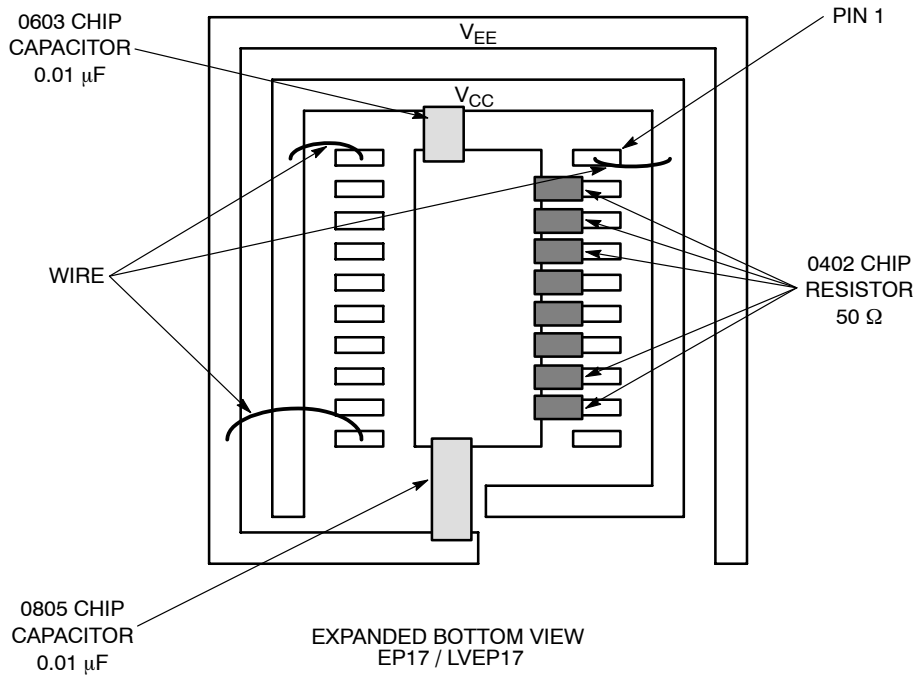
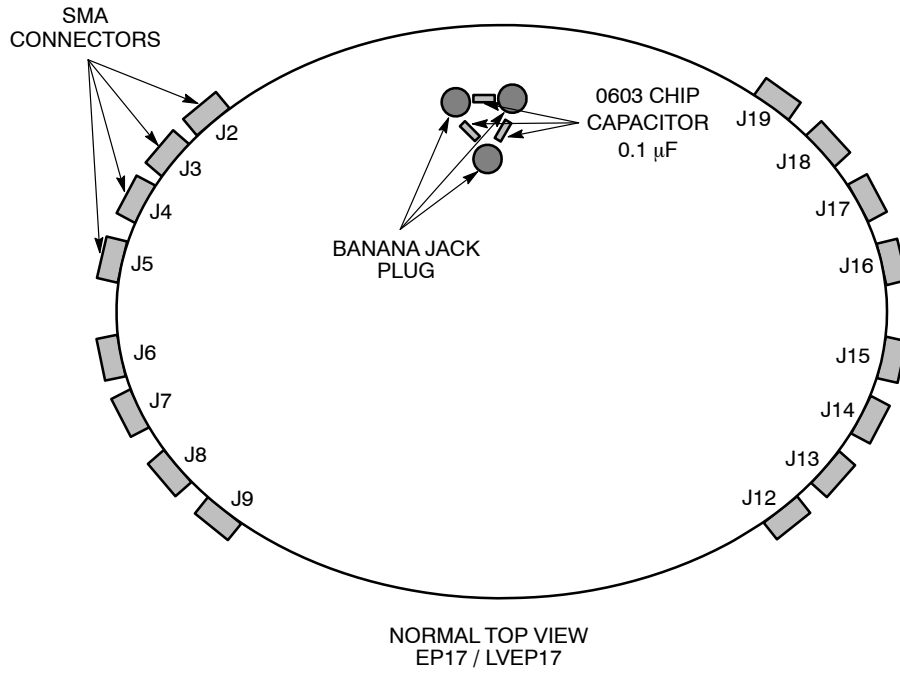


Figure 7. Configuration 2

Table 4. Configuration 2 (Device EP17 and LVEP17)

Device	J1	J2	J3	J4	J5	J6	J7	J8	J9	J10	J11	J12	J13	J14	J15	J16	J17	J18	J19	J20
Pin #	1	2	3	4	5	6	7	8	9	10	11	12	13	14	15	16	17	18	19	20
Connector	No	Yes	Yes	Yes	Yes	Yes	Yes	Yes	Yes	Yes	No	Yes	Yes	Yes	Yes	Yes	Yes	Yes	Yes	No
Resistor	No	Yes	Yes	Yes	Yes	Yes	Yes	Yes	Yes	No	No	No	No	No	No	No	No	No	No	No
Power	V _{CC}	No	No	No	No	No	No	No	No	No	V _{EE}	No	No	No	No	No	No	No	No	V _{CC}

ECLTSSOP20EVB

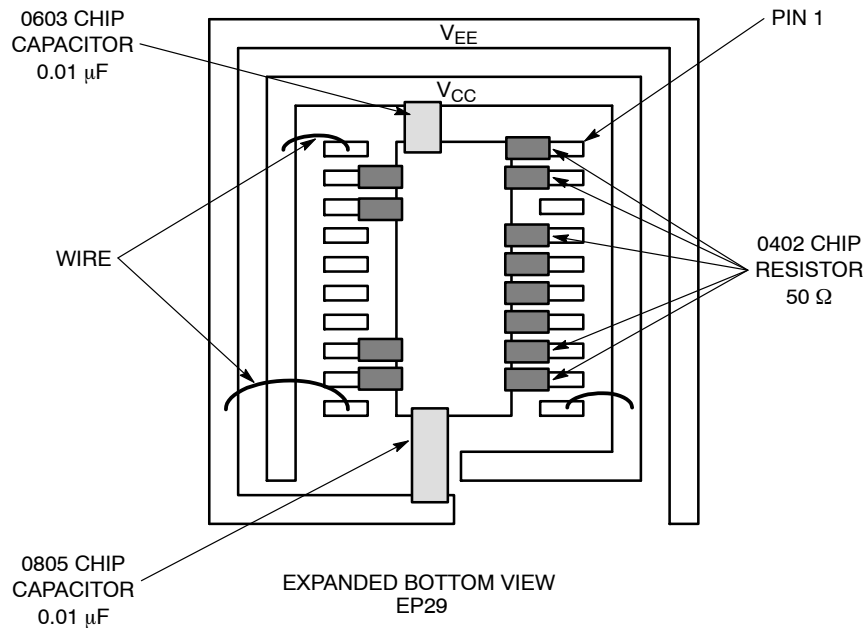
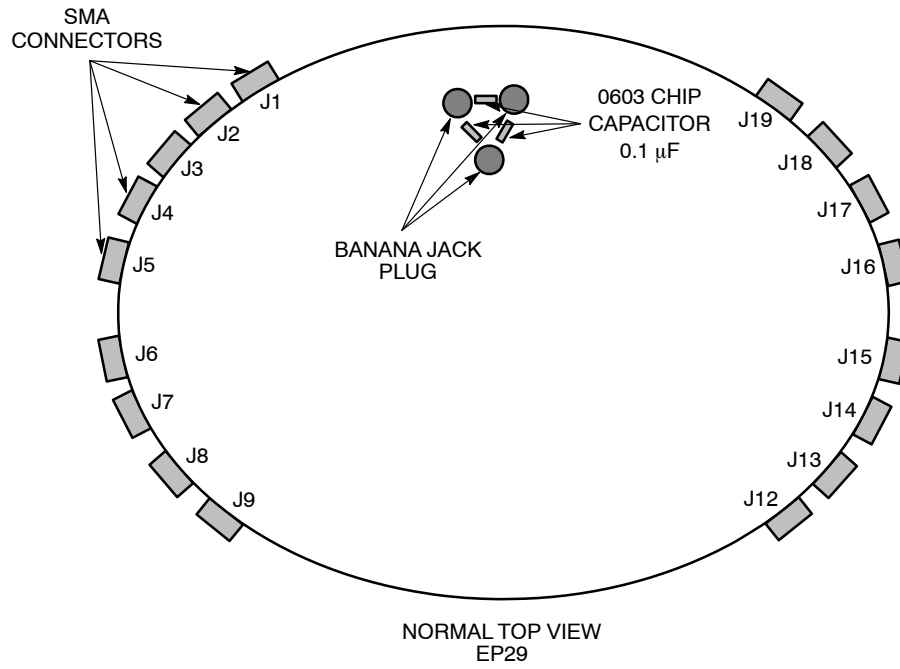


Figure 8. Configuration 3

Table 5. Configuration 3 (Device EP29)

Device	J1	J2	J3	J4	J5	J6	J7	J8	J9	J10	J11	J12	J13	J14	J15	J16	J17	J18	J19	J20
Pin #	1	2	3	4	5	6	7	8	9	10	11	12	13	14	15	16	17	18	19	20
Connector	Yes	Yes	Yes	Yes	Yes	Yes	Yes	Yes	Yes	No	No	Yes	Yes	Yes	Yes	Yes	Yes	Yes	Yes	No
Resistor	Yes	No	Yes	Yes	Yes	Yes	Yes	Yes	Yes	No	No	Yes	Yes	No	No	No	No	Yes	Yes	No
Power	No	No	No	No	No	No	No	No	No	V _{CC}	V _{EE}	No	No	No	No	No	No	No	No	V _{CC}

ECLTSSOP20EVB

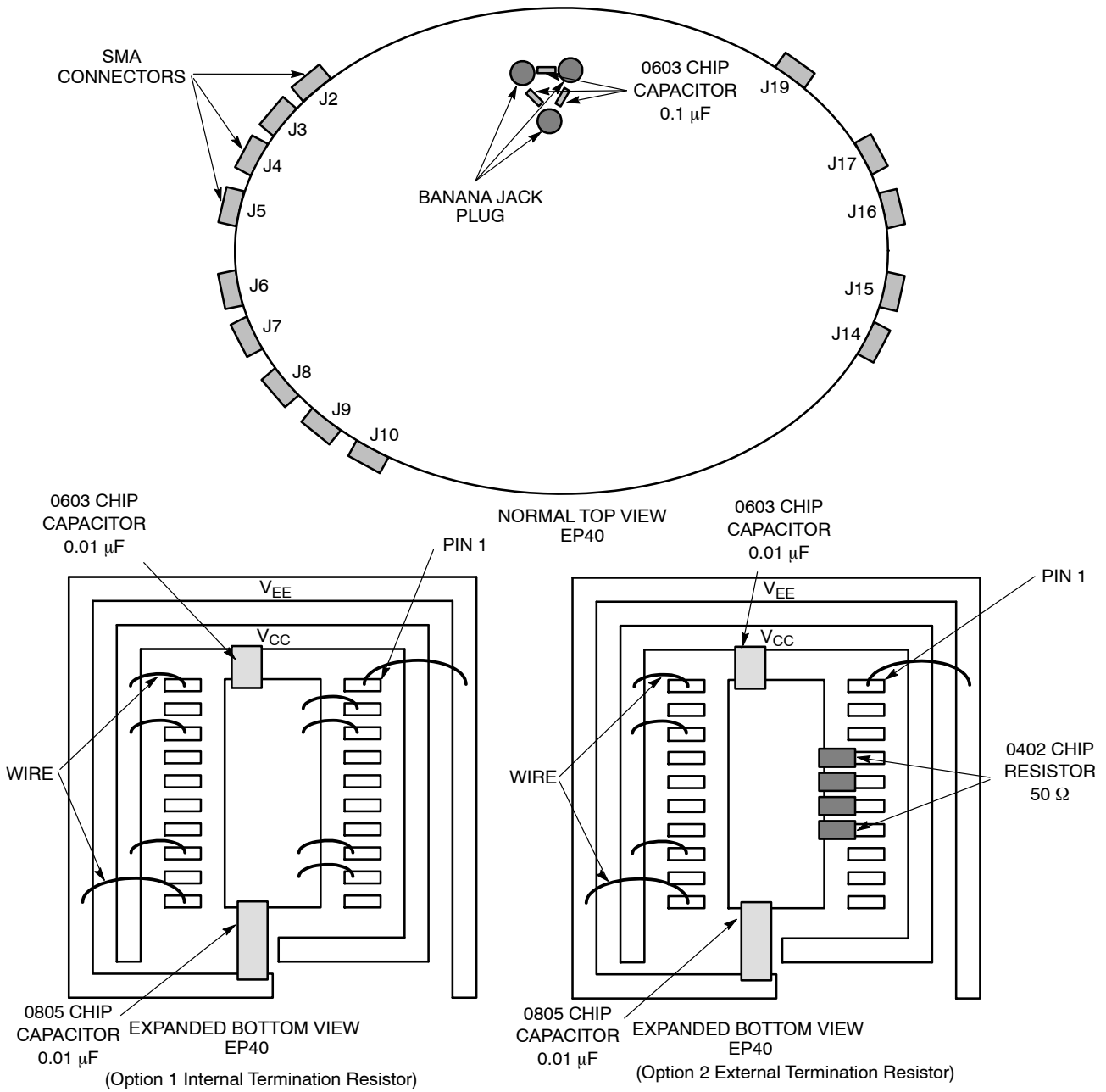


Table 6. Configuration 4 (Device EP40) (Options 1 & 2)

Device	J1	J2	J3	J4	J5	J6	J7	J8	J9	J10	J11	J12	J13	J14	J15	J16	J17	J18	J19	J20
Pin #	1	2	3	4	5	6	7	8	9	10	11	12	13	14	15	16	17	18	19	20
Option 1 Internal Termination Resistor Configuration																				
Connector	No	Yes	Yes	Yes	Yes	Yes	Yes	Yes	Yes	Yes	No	No	No	Yes	Yes	Yes	Yes	No	Yes	No
Resistor	No	No	No	No	No	No	No	No	No	No	No	No	No	No	No	No	No	No	No	No
Power	V _{EE}	Gnd	Gnd	No	No	No	No	Gnd	Gnd	No	V _{EE}	No	V _{CC}	No	No	No	No	V _{CC}	No	V _{CC}
Option 2 External Termination Resistor Configuration																				
Connector	No	Yes	Yes	Yes	Yes	Yes	Yes	Yes	Yes	Yes	No	No	No	Yes	Yes	Yes	Yes	No	Yes	No
Resistor	No	No	No	Yes	Yes	Yes	Yes	No	No	No	No	No	No	No	No	No	No	No	No	No
Power	V _{EE}	No	No	No	No	No	No	No	No	No	V _{EE}	No	V _{CC}	No	No	No	No	V _{CC}	No	V _{CC}

ECLTSSOP20EVB

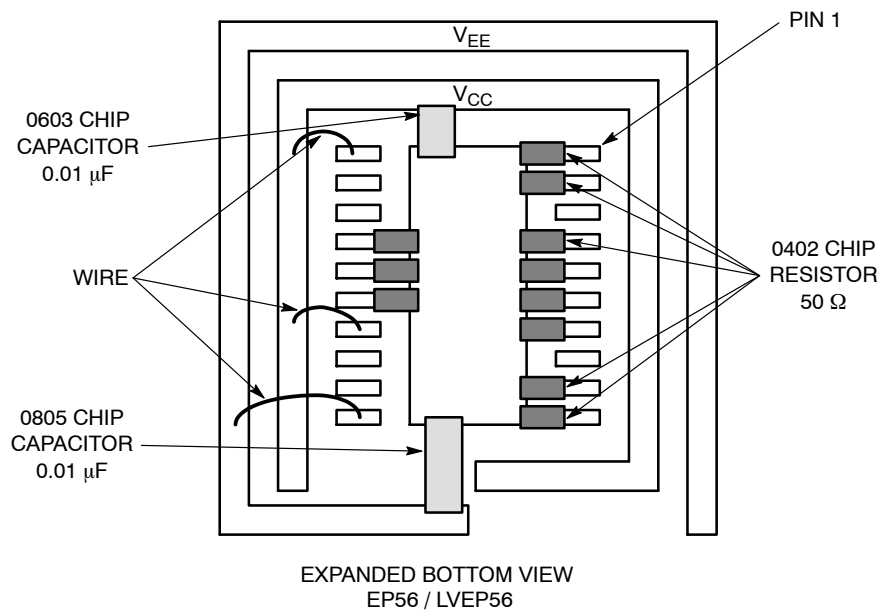
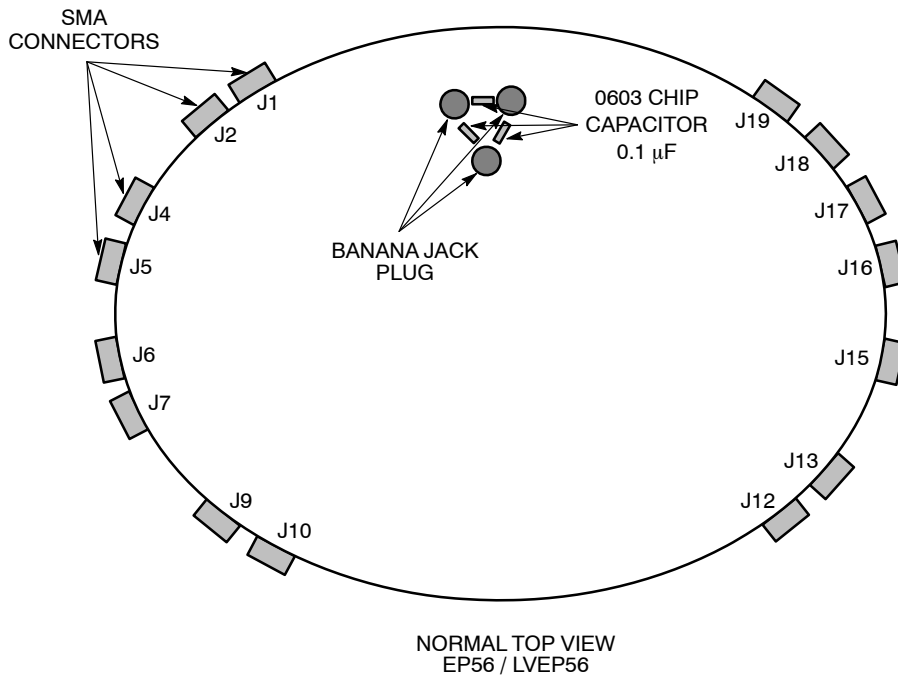


Figure 10. Configuration 5

Table 7. Configuration 5 (Device EP56 and LVEP56)

Device	J1	J2	J3	J4	J5	J6	J7	J8	J9	J10	J11	J12	J13	J14	J15	J16	J17	J18	J19	J20	
Pin #	1	2	3	4	5	6	7	8	9	10	11	12	13	14	15	16	17	18	19	20	
Connector	Yes	Yes	Yes	Yes	Yes	Yes	Yes	Yes	Yes	Yes	No	Yes	Yes	No	Yes	Yes	Yes	Yes	Yes	No	
Resistor	Yes	Yes	No	Yes	Yes	Yes	Yes	No	Yes	Yes	No	No	No	No	Yes	Yes	Yes	No	No	No	
Power	No	No	No	No	No	No	No	No	No	No	V _{EE}	No	No	V _{CC}	No	No	No	No	No	No	V _{CC}

ECLTSSOP20EVB

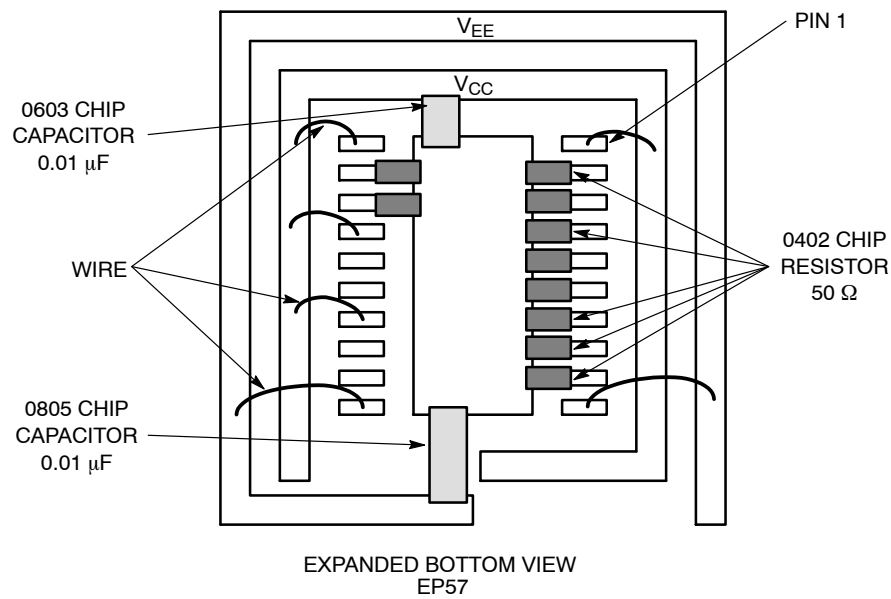
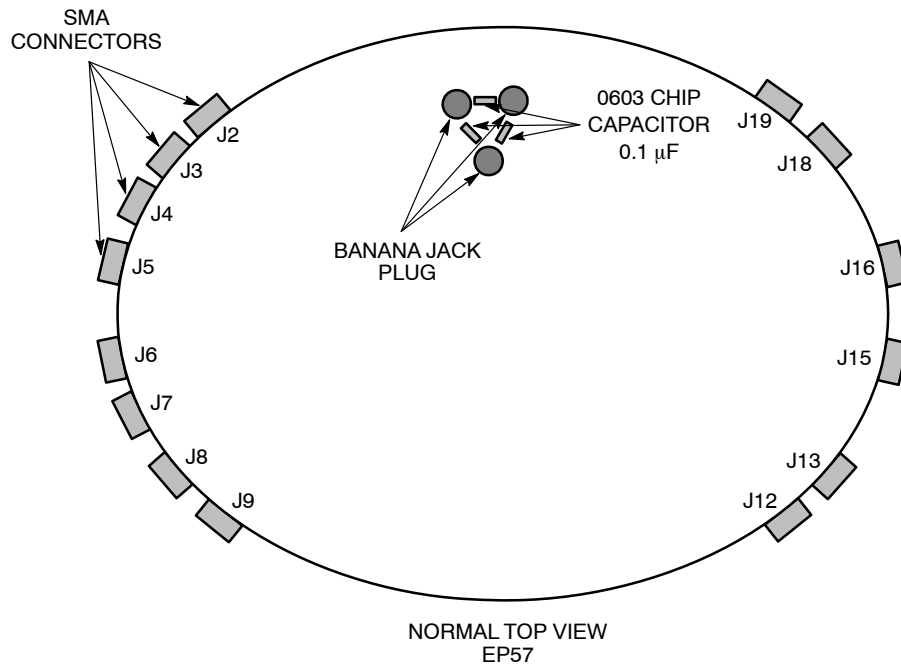


Figure 11. Configuration 6

Table 8. Configuration 6 (Device EP57)

Device	J1	J2	J3	J4	J5	J6	J7	J8	J9	J10	J11	J12	J13	J14	J15	J16	J17	J18	J19	J20
Pin #	1	2	3	4	5	6	7	8	9	10	11	12	13	14	15	16	17	18	19	20
Connector	No	Yes	Yes	Yes	Yes	Yes	Yes	Yes	Yes	No	No	Yes	Yes	No	Yes	Yes	No	Yes	Yes	No
Resistor	No	Yes	Yes	Yes	Yes	Yes	Yes	Yes	Yes	No	No	No	No	No	No	No	No	Yes	Yes	No
Power	V _{CC}	No	No	No	No	No	No	No	No	V _{EE}	V _{EE}	No	No	V _{CC}	No	No	V _{CC}	No	No	V _{CC}

ECLTSSOP20EVB

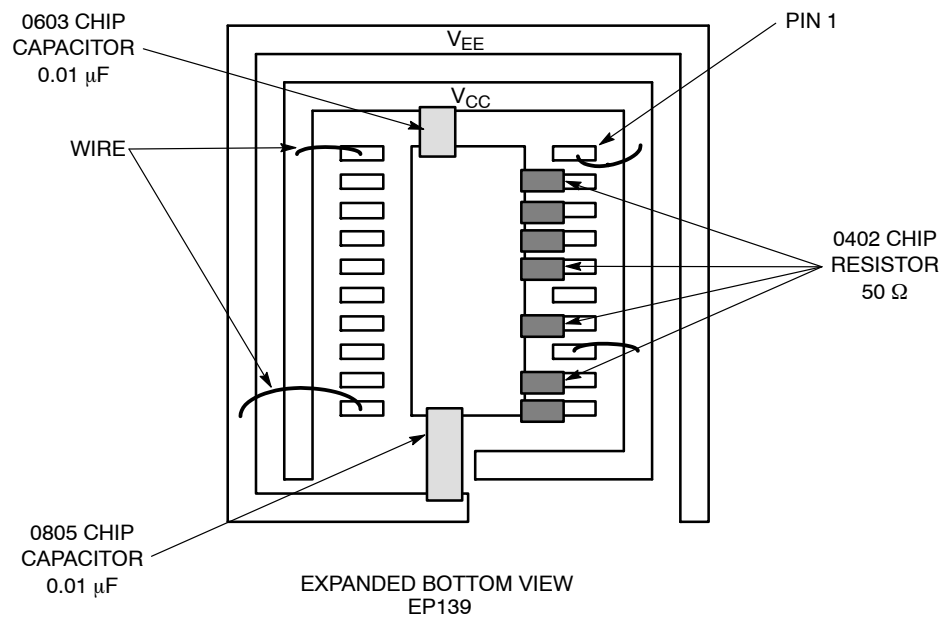
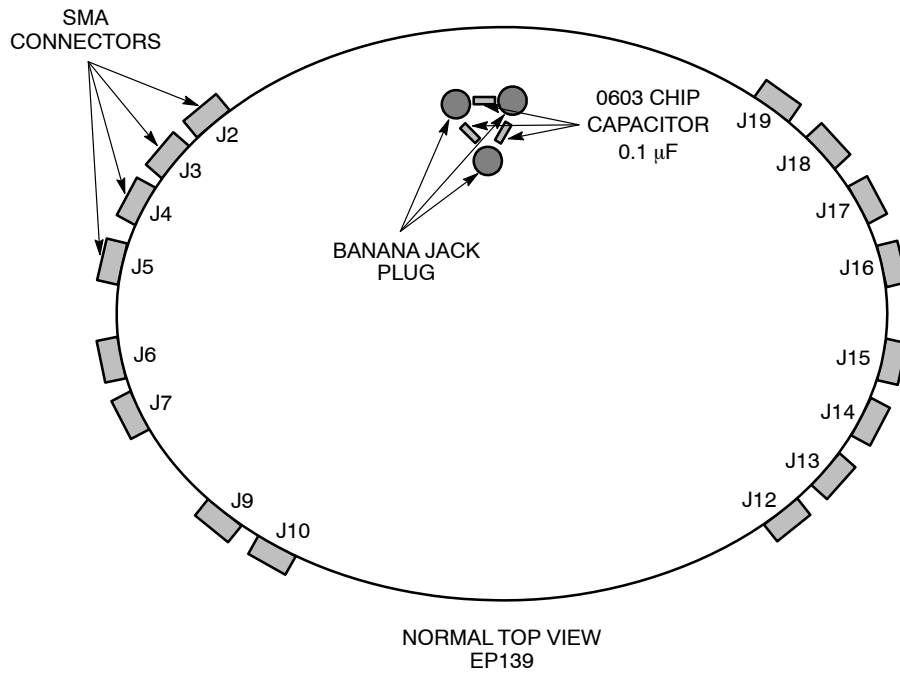


Figure 12. Configuration 7

Table 9. Configuration 7 (Device EP139)

Device	J1	J2	J3	J4	J5	J6	J7	J8	J9	J10	J11	J12	J13	J14	J15	J16	J17	J18	J19	J20
Pin #	1	2	3	4	5	6	7	8	9	10	11	12	13	14	15	16	17	18	19	20
Connector	No	Yes	Yes	Yes	Yes	Yes	Yes	No	Yes	Yes	No	Yes	Yes	Yes	Yes	Yes	Yes	Yes	Yes	No
Resistor	No	Yes	Yes	Yes	Yes	No	Yes	No	Yes	Yes	No	No	No	No	No	No	No	No	No	No
Power	V _{CC}	No	No	No	No	No	No	V _{CC}	No	No	V _{EE}	No	No	No	No	No	No	No	No	V _{CC}

ECLTSSOP20EVB

LAB SETUP

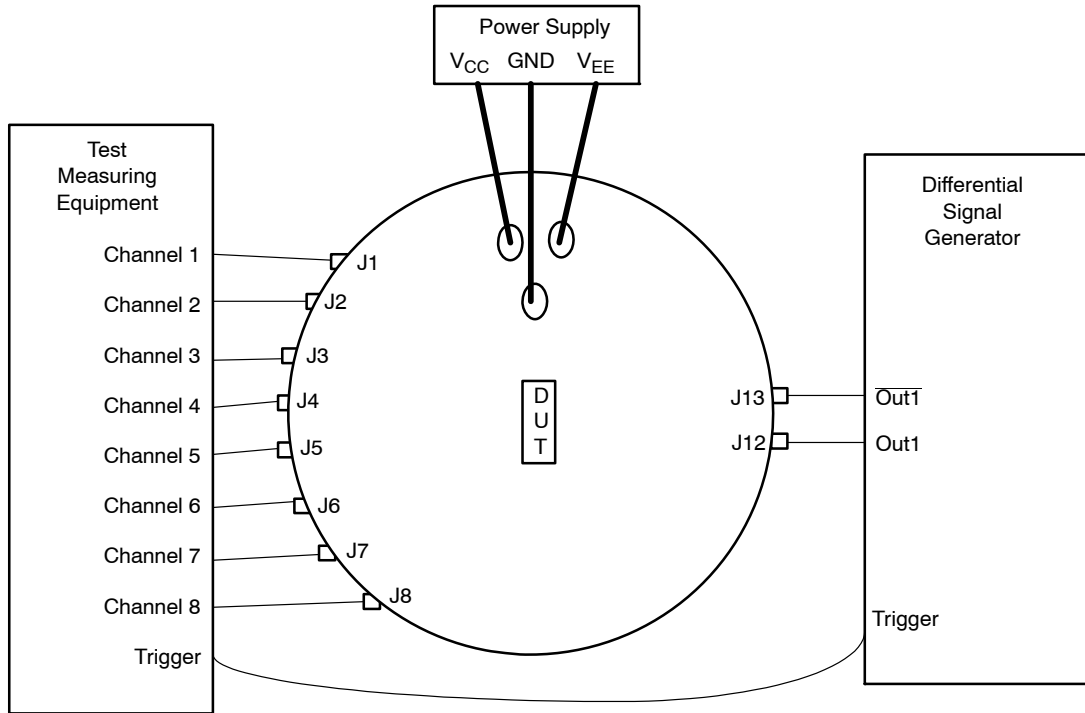


Figure 13. Example of Standard Lab Setup (Configuration 1)

1. Connect appropriate power supplies to V_{CC} , V_{EE} , and GND.

For standard ECL lab setup and test, a split (dual) power supply is required enabling the $50\ \Omega$ internal impedance in the oscilloscope to be used as a termination of the ECL signals ($V_{TT} = V_{CC} - 2.0\ \text{V}$, in split power supply setup, V_{TT} is the system ground, V_{CC} is 2.0 V, and V_{EE} is $-3.0\ \text{V}$ or $-1.3\ \text{V}$; see Table 10).

2. Connect a signal generator to the input SMA connectors. Setup input signal according to the device data sheet.
3. Connect a test measurement device on the device output SMA connectors.

NOTE: The test measurement device must contain $50\ \Omega$ termination.

Table 10. Power Supply Levels

Power Supply	V_{CC}	V_{EE}	GND
5.0 V	2.0 V	$-3.0\ \text{V}$	0.0 V
3.3 V	2.0 V	$-1.3\ \text{V}$	0.0 V
2.5 V	2.0 V	$-0.5\ \text{V}$	0.0 V

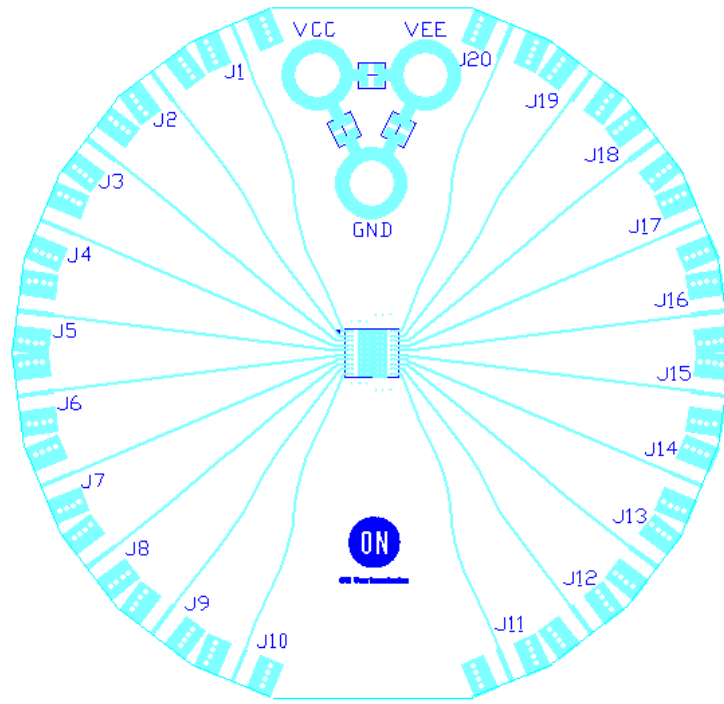
ECLTSSOP20EVB

Table 11. Bill of Materials

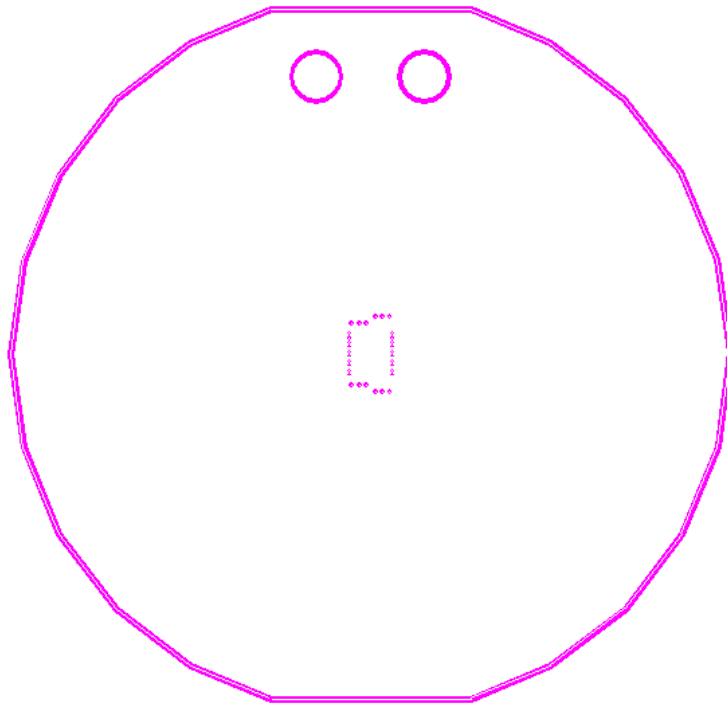
Components	Manufacturer	Description	Part Number	Web Site
SMA Connector	Johnson Components*	SMA Connector, Side Launch, Gold Plated	142-0701-851	http://www.johnsoncomponents.com
Banana Jack	Keystone*	Standard Jack	6096	http://www.keyelco.com
		Miniature Jack	6090	
Chip Capacitor	Johanson Dielectric*	0603 0.01 μ F	500R14Z100MV4E	http://www.johansondielectrics.com
		0805 0.01 μ F	500R15Z100MV4E	
		0603 0.1 μ F	250R14Z101MV4E	
Chip Resistor	Panasonic*	0402 50 Ω \pm 1% Precision Thick Film Chip Resistor	ERJ-2RKF49R9X	http://www.panasonic.com
Evaluation Board	ON Semiconductor	TSSOP 20 Evaluation Board	ECLTSSOP20EVB	http://www.onsemi.com
Device Samples	ON Semiconductor	TSSOP 20 Package Device	Various	http://www.onsemi.com

*Components are available through most distributors, i.e. www.newark.com, www.digikey.com.

ECLTSSOP20EVB



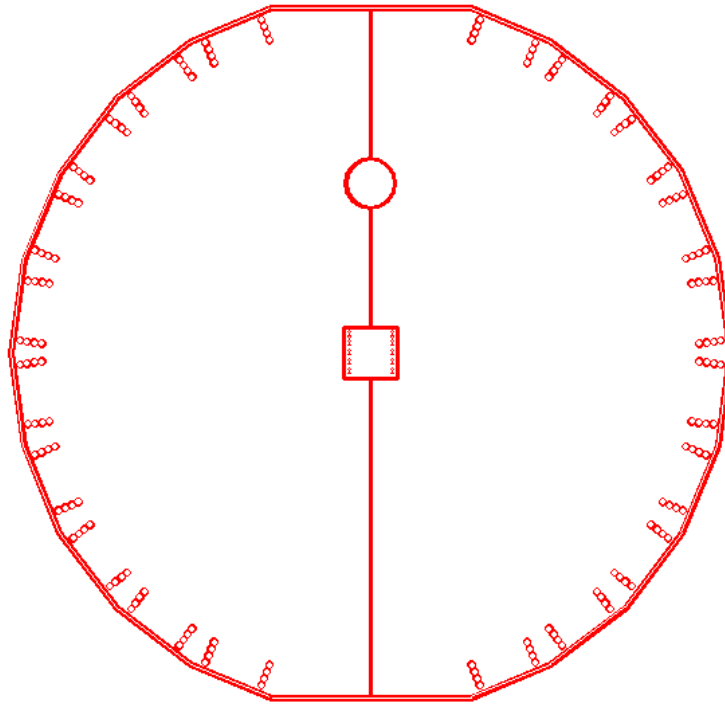
Top View



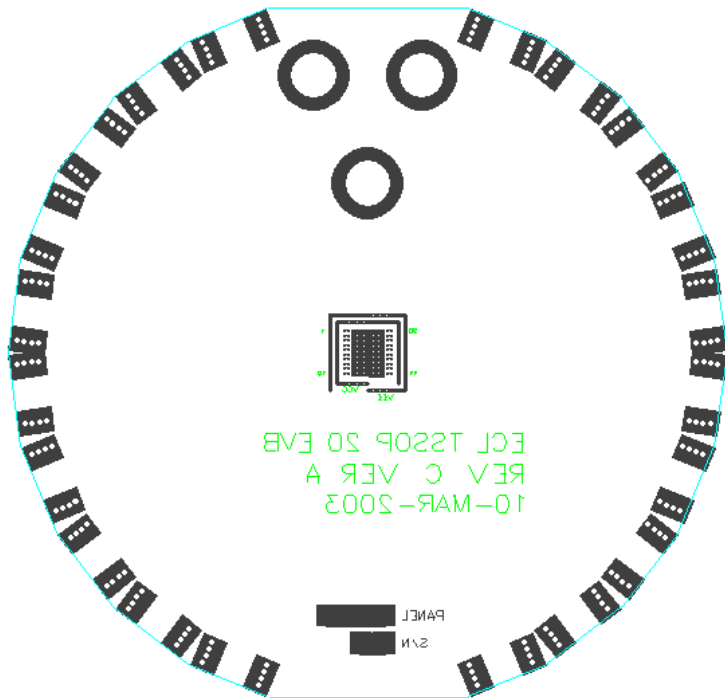
Second Layer (Ground Plane)

Figure 14. Gerber Files

ECLTSSOP20EVB



Third Layer (Power and Ground Plane)
(Left side - V_{CC}, Right side - V_{EE}, Middle Box - Ground)



Bottom Layer

Figure 15. Gerber Files

onsemi, **Onsemi**, and other names, marks, and brands are registered and/or common law trademarks of Semiconductor Components Industries, LLC dba "**onsemi**" or its affiliates and/or subsidiaries in the United States and/or other countries. **onsemi** owns the rights to a number of patents, trademarks, copyrights, trade secrets, and other intellectual property. A listing of **onsemi**'s product/patent coverage may be accessed at www.onsemi.com/site/pdf/Patent-Marking.pdf. **onsemi** is an Equal Opportunity/Affirmative Action Employer. This literature is subject to all applicable copyright laws and is not for resale in any manner.

The evaluation board/kit (research and development board/kit) (hereinafter the "board") is not a finished product and is not available for sale to consumers. The board is only intended for research, development, demonstration and evaluation purposes and will only be used in laboratory/development areas by persons with an engineering/technical training and familiar with the risks associated with handling electrical/mechanical components, systems and subsystems. This person assumes full responsibility/liability for proper and safe handling. Any other use, resale or redistribution for any other purpose is strictly prohibited.

THE BOARD IS PROVIDED BY ONSEMI TO YOU "AS IS" AND WITHOUT ANY REPRESENTATIONS OR WARRANTIES WHATSOEVER. WITHOUT LIMITING THE FOREGOING, ONSEMI (AND ITS LICENSORS/SUPPLIERS) HEREBY DISCLAIMS ANY AND ALL REPRESENTATIONS AND WARRANTIES IN RELATION TO THE BOARD, ANY MODIFICATIONS, OR THIS AGREEMENT, WHETHER EXPRESS, IMPLIED, STATUTORY OR OTHERWISE, INCLUDING WITHOUT LIMITATION ANY AND ALL REPRESENTATIONS AND WARRANTIES OF MERCHANTABILITY, FITNESS FOR A PARTICULAR PURPOSE, TITLE, NON-INFRINGEMENT, AND THOSE ARISING FROM A COURSE OF DEALING, TRADE USAGE, TRADE CUSTOM OR TRADE PRACTICE.

onsemi reserves the right to make changes without further notice to any board.

You are responsible for determining whether the board will be suitable for your intended use or application or will achieve your intended results. Prior to using or distributing any systems that have been evaluated, designed or tested using the board, you agree to test and validate your design to confirm the functionality for your application. Any technical, applications or design information or advice, quality characterization, reliability data or other services provided by **onsemi** shall not constitute any representation or warranty by **onsemi**, and no additional obligations or liabilities shall arise from **onsemi** having provided such information or services.

onsemi products including the boards are not designed, intended, or authorized for use in life support systems, or any FDA Class 3 medical devices or medical devices with a similar or equivalent classification in a foreign jurisdiction, or any devices intended for implantation in the human body. You agree to indemnify, defend and hold harmless **onsemi**, its directors, officers, employees, representatives, agents, subsidiaries, affiliates, distributors, and assigns, against any and all liabilities, losses, costs, damages, judgments, and expenses, arising out of any claim, demand, investigation, lawsuit, regulatory action or cause of action arising out of or associated with any unauthorized use, even if such claim alleges that **onsemi** was negligent regarding the design or manufacture of any products and/or the board.

This evaluation board/kit does not fall within the scope of the European Union directives regarding electromagnetic compatibility, restricted substances (RoHS), recycling (WEEE), FCC, CE or UL, and may not meet the technical requirements of these or other related directives.

FCC WARNING – This evaluation board/kit is intended for use for engineering development, demonstration, or evaluation purposes only and is not considered by **onsemi** to be a finished end product fit for general consumer use. It may generate, use, or radiate radio frequency energy and has not been tested for compliance with the limits of computing devices pursuant to part 15 of FCC rules, which are designed to provide reasonable protection against radio frequency interference. Operation of this equipment may cause interference with radio communications, in which case the user shall be responsible, at its expense, to take whatever measures may be required to correct this interference.

onsemi does not convey any license under its patent rights nor the rights of others.

LIMITATIONS OF LIABILITY: **onsemi** shall not be liable for any special, consequential, incidental, indirect or punitive damages, including, but not limited to the costs of requalification, delay, loss of profits or goodwill, arising out of or in connection with the board, even if **onsemi** is advised of the possibility of such damages. In no event shall **onsemi**'s aggregate liability from any obligation arising out of or in connection with the board, under any theory of liability, exceed the purchase price paid for the board, if any.

The board is provided to you subject to the license and other terms per **onsemi**'s standard terms and conditions of sale. For more information and documentation, please visit www.onsemi.com.

PUBLICATION ORDERING INFORMATION

LITERATURE FULFILLMENT:

Email Requests to: orderlit@onsemi.com

onsemi Website: www.onsemi.com

TECHNICAL SUPPORT

North American Technical Support:

Voice Mail: 1 800-282-9855 Toll Free USA/Canada

Phone: 011 421 33 790 2910

Europe, Middle East and Africa Technical Support:

Phone: 00421 33 790 2910

For additional information, please contact your local Sales Representative

X-ON Electronics

Largest Supplier of Electrical and Electronic Components

Click to view similar products for [Other Development Tools](#) category:

Click to view products by [ON Semiconductor](#) manufacturer:

Other Similar products are found below :

[DS100BR410EVK-4/NOPB](#) [BK0004](#) [BK0012](#) [SN65MLVD2-3EVM](#) [DS80EP100-EVK](#) [MAX9684EVKIT#](#) [MAX4952AEVKIT+](#) [ESD-EVM-001](#) [MAX14842EVKIT+](#) [EVAL01-HMC749LC3C](#) [410-320](#) [TPD6F002-Q1EVM](#) [TS9002DB](#) [DS80PCI800EVK/NOPB](#) [118777-HMC722LC3C](#) [118777-HMC723LC3C](#) [118777-HMC678LC3C](#) [DC1765A-A](#) [125614-HMC851LC3C](#) [DC2178A-A](#) [TPD1E05U06DPYEVM](#) [SN65LVDM31-32BEVM](#) [DC2062A-A](#) [NB4N855SMEVB](#) [LMH6321MR-EVAL/NOPB](#) [EVAL01-HMC747LC3C](#) [4537](#) [DK-M3F-1.8-TRK-1.5-S](#) [DK-M3-FS-1.8-1.5-M12/16](#) [DK-M3-LS-1.8-6](#) [ADALM1000](#) [ADALP2000](#) [EVAL-CN0202-SDPZ](#) [EVAL-CN0203-SDPZ](#) [EVAL-CN0204-SDPZ](#) [EVAL-CN0209-SDPZ](#) [EVAL-CN0225-SDPZ](#) [EVAL-CN0229-SDPZ](#) [EVAL-CN0251-SDPZ](#) [EVAL-CN0272-SDPZ](#) [EVAL-CN0301-SDPZ](#) [EVAL-CN0325-SDPZ](#) [EVAL-CN0355-PMDZ](#) [EVAL-CN0364-SDPZ](#) [EVAL-SDP-CB1Z](#) [DS1964SEVKIT#](#) [MAX14611EVKIT#](#) [MAX22088EVKIT#](#) [MAX4951AEEVKIT+](#) [MAXREFDES60#](#)