

ON Semiconductor

Is Now

The logo for onsemi, featuring the word "onsemi" in a dark teal, lowercase, sans-serif font. The letter "i" is stylized with a white dot and a teal vertical bar. A small orange triangle is positioned above the top right of the "i". A trademark symbol (TM) is located to the right of the logo.

To learn more about onsemi™, please visit our website at
www.onsemi.com

onsemi and **onsemi** and other names, marks, and brands are registered and/or common law trademarks of Semiconductor Components Industries, LLC dba "**onsemi**" or its affiliates and/or subsidiaries in the United States and/or other countries. **onsemi** owns the rights to a number of patents, trademarks, copyrights, trade secrets, and other intellectual property. A listing of **onsemi** product/patent coverage may be accessed at www.onsemi.com/site/pdf/Patent-Marking.pdf. **onsemi** reserves the right to make changes at any time to any products or information herein, without notice. The information herein is provided "as-is" and **onsemi** makes no warranty, representation or guarantee regarding the accuracy of the information, product features, availability, functionality, or suitability of its products for any particular purpose, nor does **onsemi** assume any liability arising out of the application or use of any product or circuit, and specifically disclaims any and all liability, including without limitation special, consequential or incidental damages. Buyer is responsible for its products and applications using **onsemi** products, including compliance with all laws, regulations and safety requirements or standards, regardless of any support or applications information provided by **onsemi**. "Typical" parameters which may be provided in **onsemi** data sheets and/or specifications can and do vary in different applications and actual performance may vary over time. All operating parameters, including "Typicals" must be validated for each customer application by customer's technical experts. **onsemi** does not convey any license under any of its intellectual property rights nor the rights of others. **onsemi** products are not designed, intended, or authorized for use as a critical component in life support systems or any FDA Class 3 medical devices or medical devices with a same or similar classification in a foreign jurisdiction or any devices intended for implantation in the human body. Should Buyer purchase or use **onsemi** products for any such unintended or unauthorized application, Buyer shall indemnify and hold **onsemi** and its officers, employees, subsidiaries, affiliates, and distributors harmless against all claims, costs, damages, and expenses, and reasonable attorney fees arising out of, directly or indirectly, any claim of personal injury or death associated with such unintended or unauthorized use, even if such claim alleges that **onsemi** was negligent regarding the design or manufacture of the part. **onsemi** is an Equal Opportunity/Affirmative Action Employer. This literature is subject to all applicable copyright laws and is not for resale in any manner. Other names and brands may be claimed as the property of others.

LV8907UW Evaluation Kit

Overview

The LV8907UW Evaluation Kit v1.0 is designed to provide an easy and quick development platform for three phase sensor-less BLDC motor control applications using the LV8907UW. The LV8907UW is a stand-alone solution that does not need a microcontroller for operation. An Atmel microcontroller is included in the kit to communicate via USB with the PC based graphical user interface (GUI) and support some peripheral functions such as current and voltage measurement, and external temperature monitoring for easier system development. For quick-start and basic The kit consists of:

1. LV8907UW Evaluation Board (EVB)
2. USB cable Type A to mini B.
3. Graphical User Interface.

Technical Features

- Motor operation: 7V to 20V (40V transient).
- Max current: 30A.
- Maximum continuous power: 400W.

Quick start

The evaluation board is programmed to work standalone without PC. The following operation allows the operation of most motors with the default parameters that are preloaded into the LV8907.

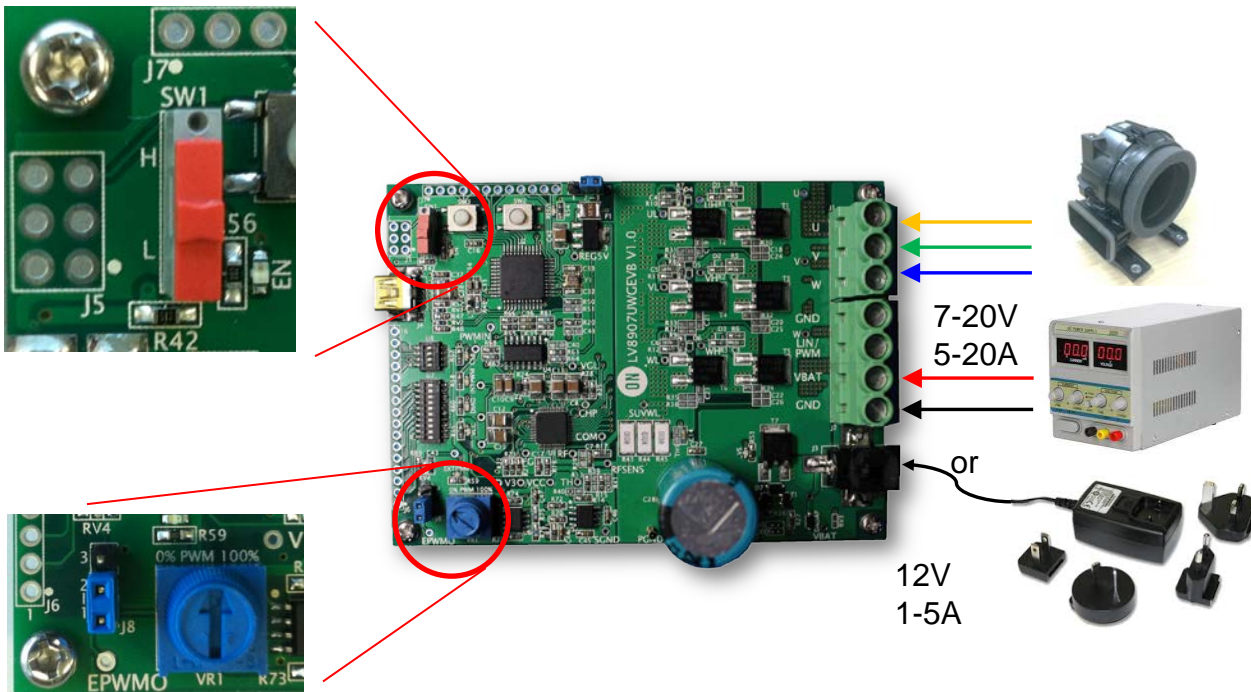
- step 1. Connect a motor to J1
- step 2. Connect a power supply to J2. (J3 is provided optionally for low power application less than 5A).
- step 3. Turn off (L) the enable switch SW1
- step 4. Turn on power supply
- step 5. Turn on (H) the enable switch SW1
- step 6. Motor speed can be manipulated with the potentiometer VR1



ON Semiconductor[®]

www.onsemi.com

USER GUIDE



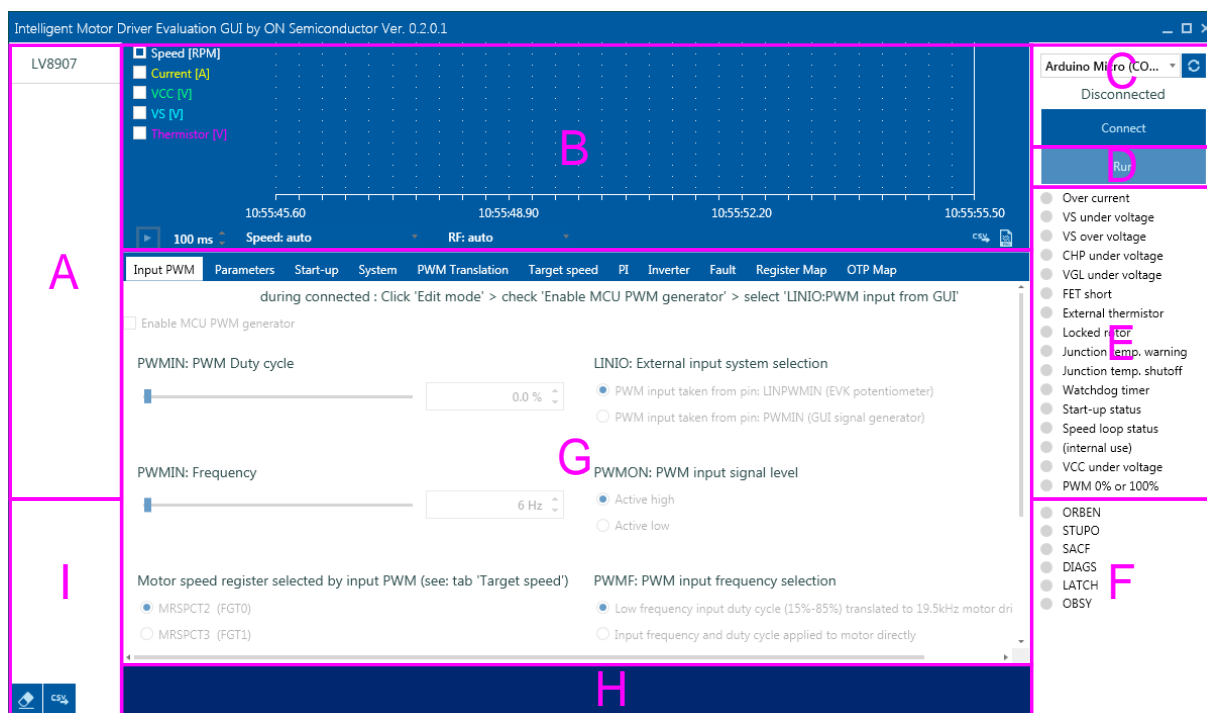
The information herein is subject to be change without notice.

GRAPHICAL USER INTERFACE PROGRAM

This evaluation kit turns most motors with the default settings out of the box. The strength of the LV8907UW however, lies in its flexibility to be optimized for each individual motor without software development. The relevant parameters inside the IC are accessed through SPI interface. A graphical user interface (GUI) program, running on a Windows PC (System 7 and up) is available to access these parameters. By using this program, users can tweak the parameters, select the features and monitor the motor status.

User interface overview

After program launch, the main window of the GUI appears. It is subdivided into the following areas.



- A: Product Selector
selects the ON Semiconductor IC to be controlled with this GUI.
- B: Oscilloscope
displays various system relevant signals over time.
- C: USB Connection Box
Manage the USB connection between Computer and EV-Kit.
- D: Run/Stop Button
to turn the motor on/off.
- E: Fault Register
displays detailed system faults.
- F: SPI Status Register
is returned with every SPI access and displays critical system status information.
- G: Parameter Entry Field
allows real time access to system parameters selected by the rider at the top of the panel.
- H: Event Log
displays relevant system messages for debug purpose.
- I: Event Log Control
clears or saves the system messages.

GUI Installation

Program installation is required for first time use. The installation is described in “Device Driver and Program Installation” on page 9. Administrator rights are necessary.

Basic GUI Operation

These basic instructions explain how to:

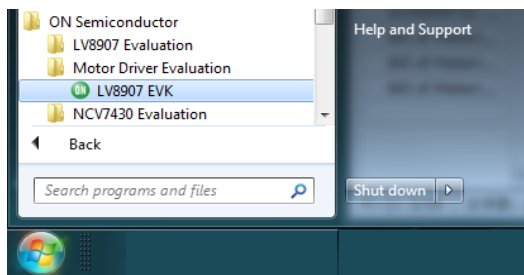
1. Setup the board
2. Start the GUI
3. Link the board
4. Run a motor
5. Motor control with GUI
6. Oscilloscope
7. Fault Messages

Setup the board

A motor and power supply should be connected as described on page 1 and the USB cable must be connected. The enable switch SW1 must be turned to L to allow control by the GUI program. If it is the first time to connect the board by USB, the device driver installation is required. See “Device Driver and Program Installation” on page 9.

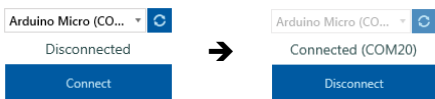
Start the GUI

The program is started from “Start menu > ON Semiconductor > Motor Driver Evaluation”. The program will start when “LV8907 EVK” is selected.



Link the board

The software should find the COM port with the Arduino Micro on its own and list it in the connection box above the button. By clicking the ‘Connect’ button, the communication between PC and the board begins. If the link was successful, the message ‘Connected (COM#)’ is shown above the button. Where the COM# is the name of USB-COM port, and the button text is changed to ‘Disconnect’.



If the message ‘Disconnected’ is still shown above the button the link failed. Sometimes this happens if the USB installation has not finished. A port re-scan can be initiated by clicking the circular arrow button at upper right of the window.



This searches the board through the USB ports again. The ‘Connect’ button should be re-tried afterwards.

If the power or USB connection is interrupted the GUI will return into ‘Connect’ mode.

Run a motor

A default register setting of LV8907UW has been pre-loaded into the LV8907 which should run most motors. Just clicking ‘Run’ button (D) makes the driver active and the ‘Run’ button text is changed to ‘Stop’. The potentiometer VR1 on the board can be used for controlling the motor speed.

The motor will stop, when the ‘Stop’ button is clicked.

Motor control with GUI

Instead of using the on-board potentiometer VR1 the GUI provides a PWM signal generator to adjust motor speed.

1. Click ‘Stop’, if the motor runs.
2. Select the ‘Motor control’ tab, if it’s not selected.
3. Click ‘Edit mode’ button at lower right of the window.
4. Check ‘Enable MCU PWM generator’ at upper left in the tabbed window.
5. Select the radio button ‘PWM input from GUI (PWMIN pin with MCU)’ of the register ‘LINIO’.
6. Set PWM duty cycle and frequency appropriately. The frequency range depends on the state of ‘PWF’ (Do not activate ‘Direct’ for now).

To change settings the panel must be in edit mode. The changes will be transferred to the LV8907UW, when the ‘Update values’ button is clicked.

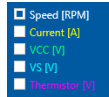
Oscilloscope

An oscilloscope type graphic window (B) is provided which can plot the following values:

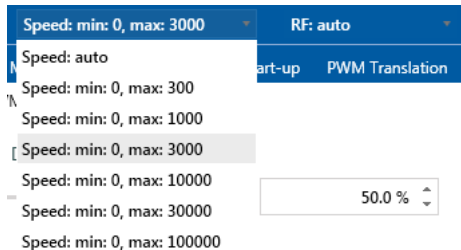
- the motor speed,
- current at sense resistor RF,
- VCC, the 3.3V/5V voltage regulator
- The supply voltage VS
- External thermistor input TH.

For example, to monitor the motor speed:

1. Check the check box ‘Speed [RPM]’



2. Select vertical axis scale if needed



3. Click play button



4. Click 'Run' button

Be aware, that the displayed speed will be in “electrical revolutions” per minute (i.e. for a two pole motor). To display physical motor speed it is necessary to enter the number of poles in the ‘Parameters’ window described in the next section and clear the plot to display the new scale by selecting stop and play from the graph window.

The oscilloscope also includes a recoding function. The CSV button exports data in a .CSV (comma separated values) format file.



The file can be read with Microsoft Excel. The maximum data length is 5000. The sampling interval can be changed by the up-down menu next to the play button. All data traces are exported into the .CSV file, even if they are not displayed.

A screen copy function is also provided. It supports JPEG, JPEG FIF and PNG. Its button is located next to the CSV button.



Fault Messages

While connected, the GUI will display real time system fault messages in the Fault Register ([E](#)). Following is a list of the faults and possible remedies:

- **Over current:**
The maximum system current was exceeded (200mV across the shunt resistor). Since the LV8907UW has cycle by cycle current limit, an overcurrent error can either be caused by a fast transient. If persistent this indicates a serious problem such as a short across the power stage, or a loose connection in the board routing. It is recommended to return the EV-Kit.
- **VS under voltage:**
The supply voltage has fallen below 7V. Probably because the power supply is too soft.
- **VS over voltage:**
The supply voltage has risen above 21V. Maybe because the motor dumped charge into the system after being disabled.
- **CHP under voltage:**
The high-side charge pump capacitor on CHP has lost charge or is malfunctioning, or one of the charge pump caps is faulty.
- **VGL under voltage:**
The low-side charge pump capacitor has lost charge or is malfunctioning, or one of the charge pump caps is faulty.
- **FET short**
The voltage drop across one of the inverter FETs has exceeded its programmed maximum value. Probably a system parameter error, increase FSCDL.
- **External Thermistor**
The voltage at pin TH as fallen below the programmed threshold. Adjust the threshold

parameter THTH or make sure pin TH has been tied to V3RO and not GND to disable it.

- **Locked Rotor**
The motor has gone through “open loop startup” but is not providing a back EMF after the startup timer has run out. Usually this lights up with ‘Start-up Status’. Either there is no motor connected, or the startup parameters are wrong. It may also be that the shunt resistor is too large for this motor, so the current limit prevents a large motor from turning.
- **Junction temp. warning**
The IC temperature has exceeded the warning threshold (125°C or 150°C) depending on TSTS.
- **Junction temp. shutoff**
The IC temperature has exceeded the shutoff level threshold (150°C or 175°C) depending on TSTS.
- **Watchdog timer**
has run out without being triggered. This error will always be displayed if the watchdog register is not being written to within the window. It is usually disabled and has no effect, if enabled in register WDTEN, the LV8907 will respond to the error.
- **Start-up Status**
The LV8907UW is in open loop startup mode. The error goes away once a back EMF has been reliably detected.
- **Speed loop status**
error is flagged if the speed control algorithm within the LV8907UW is enabled and the measured speed is more than 6.25% different from the target speed.
- **VCC under voltage**
The VCC (3.3V/5V) regulator is below its minimum threshold. Probably overloaded.
- **PWM 0% or 100%**
error indicates that input PWM is not switching, probably static low or high.

Advanced GUI Operation and System Setup

The LV8907UW parameters and some motor related functions are categorized into the following riders at the top of Parameter Entry Field (G).

- **Input PWM**
- Program **Parameters**
- **Start-up** parameters
- Fundamental **System** configurations
- Command **PWM Translation**
- **Target speed** setting for the closed loop control
- **PI** parameter of the closed loop speed control
- **Inverter** control parameters
- **Fault** handling setting
- Bit/byte base **Registers Map**
- **OTP** memory **Map**

The each serial port register is titled by its name specified in the data sheet with a brief description. For some of multiple bit registers, the three-way input method is provided. It can be set with a slide bar, physical value or direct code. The tabbed windows have 'Edit mode' button to change the values and settings. And, once the 'Update values' button is clicked, the registers will be updated. It prevents that intermediate values are immediately updated back-and-forward, while the nob of the slide bar is dragged.



In the LV8907UW, there are registers which can be written during the standby mode only. The buttons of such registers are automatically gray-out during the run mode.

Input PWM

In this window, a PWM signal generated by the on-board MCU is controlled. This signal is connected to the PWMIN pin of the LV8907UW. The PWM signal of the on-board potentiometer is connected to the LINPWMIN pin. The input is switched by LINIO bit. The GUI controlled MCU PWM is selected, when the radio button 'PWM input from GUI (PWMIN pin with MCU)' is selected.

Parameters

The number of poles and the resistance of current sense resistor RF are specified in this window. They are used in the GUI program for the conversion of the rotational speed and the current individually. It is highly recommended to set these parameters at the beginning. When these are changed intermediate of the operation, the following manual operations are required.

- Refresh the oscilloscope plots by toggle Stop/Play button when it is playing.
- Refresh the RPM text boxes of the register FGTs in the tabbed window 'Target speed' by clicking 'Edit mode' and 'Cancel' consecutively.

The 'Communication timeout' is not related to the motor nor motor driver. It is used for the USB

communication with the board. Users don't have to consider it, usually.

Register Map

The parameter settings modified in other tabbed windows except OTP Map, are applied to the LV8907UW registers. In this window, the register map is shown, reading back from LV8907UW registers.

Where the cell color

- green represents 1
- white represents 0
- dark red represents 1 of a read-only register
- pink represents 0 of a read-only register

Whenever the bit cell is clicked, 1 and 0 is toggled.

Clicking over the register address or name cell, the byte based modification is activated.

For use of next time, or for copy to OTP, the register map can be saved to a CSV file with 'Export' button. Optionally, you can add a short note in to the first line of the CSV file with the 'Export comment' text box before saving the file.

Export comment

trial motor A

Save register map

Export

And, the 'Import' button loads the register map values from a CSV file to the LV8907UW registers directly.

OTP Map

The LV8907UW has a non-volatile memory for the standalone operation in the user application. The memory is a one-time programming (OTP) type. The board of this EV-kit is not designed to allow users to write OTP. The tools, which are compatible to this GUI program, for OTP memory writing are provided. Please contact to local ON Semiconductor sales office for the technical support.

The OTP writing procedure:

1. Load a register map from the file which is saved in the Register Map window by Import button. At this step, the map data are stored in the PC memory.
2. Manual touch up can be done by clicking the bit cells if needed.
3. To write OTP memory, the following conditions must be met.
 - a. Communication line to the board is successfully connected through a USB.
 - b. The power supply voltage is higher than 14V.
 - c. EN pin low (motor stop)
4. Click 'Write' button

The following optional functions are provided as well.

- Read OTP and show in the map cells
- Save the OTP map stored in the PC memory to the file.

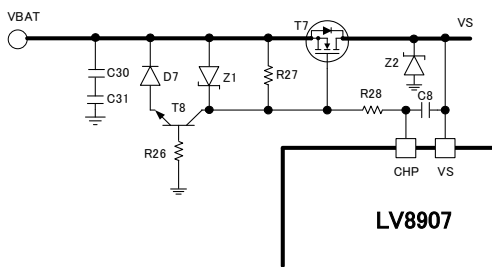
HARDWARE DESCRIPTION

Detailed Description

The LV8907 is the central controller on the EVB that implements the sensor-less commutation algorithm, provides user-selectable system control functions and drives the motor through the on-board N-MOSFET based inverter. Refer Appendix A Schematic (1/2) on page 12 and following pages.

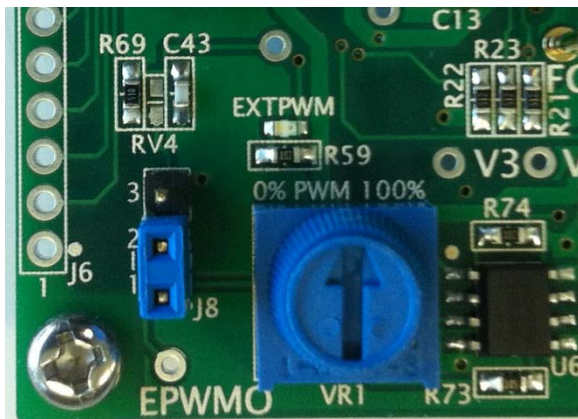
Reverse Battery Protection

To protect the EVB from inadvertent reverse battery connection, a protection circuit is provided as shown in Figure 8. When the battery supply is normally connected, the transistor T8 does not conduct, the transistor T7 turns on and thus, providing the path for the battery supply. When the battery supply is reversed, T8 will conduct and pulls down the gate of T7 and forces it to turn off. This will ensure that the battery is disconnected from rest of the circuit, thus protecting the EVB.



On-board PWM generator

The on-board PWM generator provides PWM signal to the LV8907. Its frequency is 100Hz, and the duty cycle can be varied from 0 to 100% with the potentiometer VR1. To use this, connect pin 1 and 2 of the jumper J8, and reset the bit 'LINIO' (MRCONF0[0]) of the configuration register.



Three-Phase N-MOSFET Based Inverter

The EVB has six N-MOSFETs (T1, ..., T6) in a three-phase inverter configuration as shown in the board schematic (Appendix A). A snubber protection circuit (made of resistor and capacitor) is provided across each N-MOSFET as well as across each leg. Between gate and source of each N-MOSFET, a resistor and a

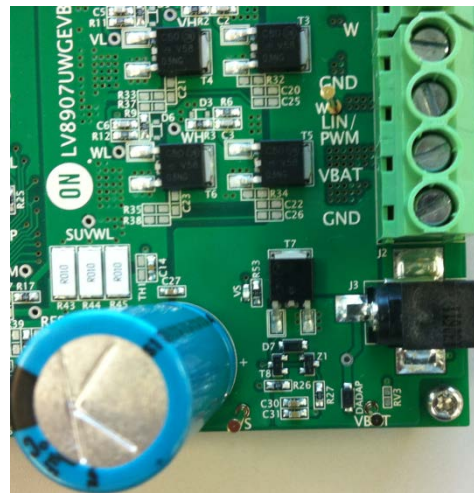
capacitor is provided to adjust turn ON/OFF time as well as to protect the inverter against unintentional turn ON due to high impedance gate output signals when the LV8907 is in sleep mode. Diodes (D1, ..., D6; not installed) are provided to control turn OFF time of N-MOSFETs.

Phase Back EMF Sensing For Sensor-less Commutation

A resistor adder network as shown in the board schematic (Appendix A) is used for sensing the motor neutral point. Each individual phase voltage (UOUT, VOUT, and WOUT) is also sensed by the LV8907 to measure the back EMF in each phase. These sensed signals are further processed inside the LV8907 to detect zero-crossing events for each Back EMF and calculate the next commutation time as well as sequence.

Power Supply

The LV8907 EVB is designed to operate at 12V (typ.) with the operating voltage range from 5.5V to 20V. C28 is used as a local source and filter for the board. To power up the board, connect an external power adapter to J3. Alternatively, connect a voltage source between VBAT (pin 3) and GND (pin 4) of J2.



CAUTION: When driving a high power load, ensure to make adequate arrangement to filter supply ripples. The power supply connector J3 rating is 3.9A. For higher current application, the power must be supplied through the connector J2. The U3 regulator generates 5V output from the DC input source. No USB power is used to power up any circuit on the board.

The LV8907 provides a user-selectable 5V/3.3V output for powering the microcontroller and other control circuits (although it is not used in the present EVB).

Communication Interface – Arduino Micro compatible

The EVB has an on-board communication interface that is Arduino Micro compatible circuit using ATmega32U4 MCU (U2). This communication interface enables the LV8907 to communicate with the

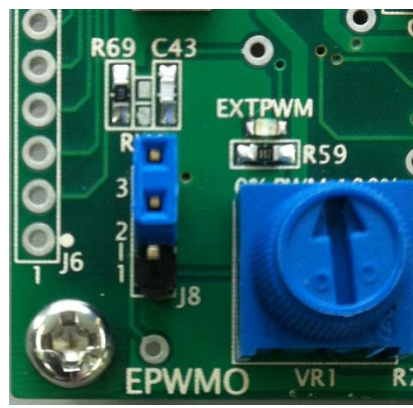
PC based GUI. The mini B connector is provided to connect the USB cable to the PC.

Jumper J6 and J7

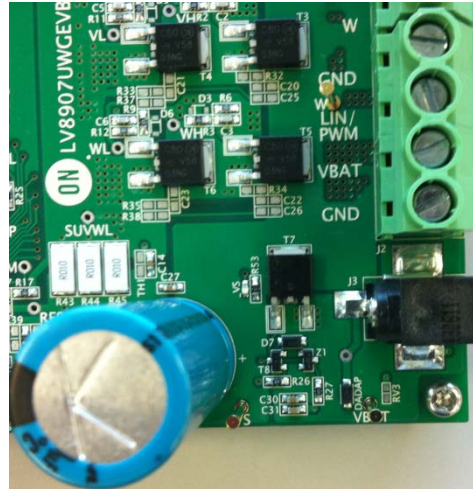
Jumper J6 is provided for connecting an external MCU, instead of the on-board MCU U2 for the system control. Jumper J7 brings out unused pins of the on-board MCU U2 that the user can utilize to connect any external signal for monitoring and control.

LEDs

Various LEDs are provided on the EVB to indicate status of critical signals.



LED	Color	Turn-on Meaning
VS	Green	Main power rail is active
REG5	Green	5V power rail is active
VCC	Green	Output from internal regulator of LV8907 is available
EN	Green	Enable signal is high
CSB	Yellow	Chip select of SPI communication is active
INTPWM	Yellow	Brightness is representation of duty cycle and frequency of the PWM signal from the MCU
EXTPWM	Yellow	Brightness is representation of duty cycle and frequency of the PWM signal from the source other than the MCU (i.e. Potentiometer or an external PWM)
DIAG	RED	Fault output of LV8907 is active



Current Sense Amplifier

An on-board amplifier U4 is used to amplify various signals such as motor current, VCC, VS, RF (current sense feedback) and Thermistor for monitoring by ADCs of the MCU. It is an optional feature and not must for the end application.

LIN Input

The LV8907 has an integrated LIN transceiver. The EVB has all required hardware that allows the user to use an external LIN signal for controlling the motor. In order to implement the LIN functionality, the user will have to program the MCU with an LIN stack. Connect pin 2 and 3 of the jumper J8 to connect the LIN input signal (J2 pin 2) to the LV8907, and set the bit 'LINIO' (MRCONF0[0]) of the configuration register.

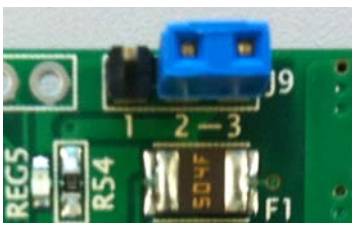
Interfacing an External MCU

If a user wants to use an external MCU to communicate with the LV8907, then following steps are to be followed.

- A. Remove all cables that may be connected to the EVB such power supply, USB, LIN/PWM input, etc.
- B. Put U7 and U8 switches to disconnect positions as shown in Figure 5.



- C. If the external MCU can accept only 3.3V signals on IO pins, then connect pin 1 and 2 of the jumper J9.



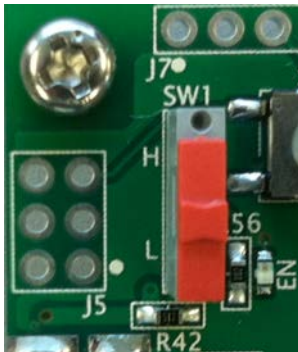
This action will disconnect the on-board 5V power supply from pull-up resistors. Now, the user can connect the external 3.3V power supply to pin 1 of the jumper J6.

If 5V signals are ok for the external MCU, then keep jumper as it is between pin 2 and pin 3 of the jumper J9. D. Use the jumper J6 to connect various control and power signals from MCU to the LV8907.

Standalone LV8907 Control

The LV8907 can operate without requiring any MCU in the standalone mode. In this mode, the motor speed can be controlled either by using an on-board potentiometer or an external PWM (EPWMI or pin 2 of J2). To operate the LV8907 in this mode, following steps are to be followed.

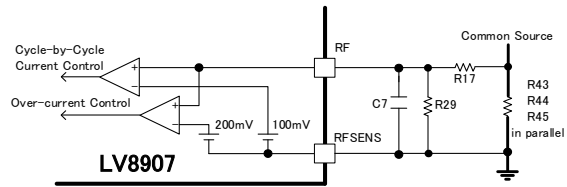
- Program the LV8907 OTP using the on-board MCU and the GUI.
- Remove all cables (power supply, USB, motor windings) from the EVB.
- Connect pin 1 and 2 of the jumper J8 if the motor speed control by an on-board potentiometer is desired. Else, connect pin 2 and 3 of the jumper J8 for the motor speed control by an external PWM signal (To be connected at EXT_PWM_MONI or pin 2 of J2). **Note:** If the duty cycle is set to 0% or 100%, the LV8907 may activate the DIAG signal because these duty cycles represent DC levels and not PWM. Hence, the LV8907 detects these events as faults and activates the DIAG signal.
- Put the SW1 that control the EN signal of the LV8907 to the OPEN position.



- Reconnect all cables to the EVB except the USB cable as it is not necessary.
- Turn on the external power source.
- Press IC_RST once to reset the LV8907
- Put the SW1 to the HIGH position to activate the LV8907.
- Vary the PWM duty cycle to regulate the motor speed.

Over-current Protection

A shunt current sensing network (R43, R44 and R45 in parallel) used to monitor the motor current as shown in Figure 9. The LV8907 has two in-built voltage references for cycle-by-cycle current control (100mV) and over current control (200mV). Effective value of the sensing network is 3.33mΩ that triggers the cycle-by-cycle current limit at approximately 30A and the over current limit at approximately 60A.



When the voltage difference across the sensing network is $> 100\text{mV}$, the cycle-by-cycle current control signal is asserted. During this control action, all gate output signals are turned off until the next PWM cycle. No flag is set during this action. To filter switching transients, a current limit blanking time, $0.1\mu\text{s} < T_{\text{CLMASK}} < 1.6\mu\text{s}$ can be programmed in the register MRCONF5 [7:4].

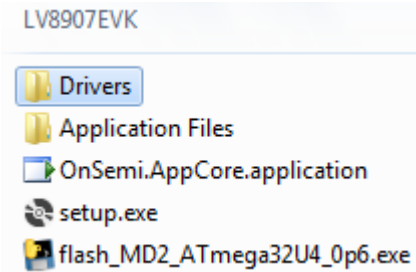
When, the voltage difference across the sensing network is $> 200\text{mV}$, the over current control signal is asserted. If the OCPEN (MRCON10 [1] bit) is set, then the active control signal will set a flag bit OCPO (MRDIAG0 [0]) and all gate output signals are turned off and will remain off depending on the selected fault recovery mode. To filter switching transients, a current limit blanking time, $0.2\mu\text{s} < T_{\text{OCMASK}} < 3.2\mu\text{s}$ can be programmed in the register MRCONF5 [3:0].

For more details on over current and other protection features of the LV8907, refer the LV8907 datasheet.

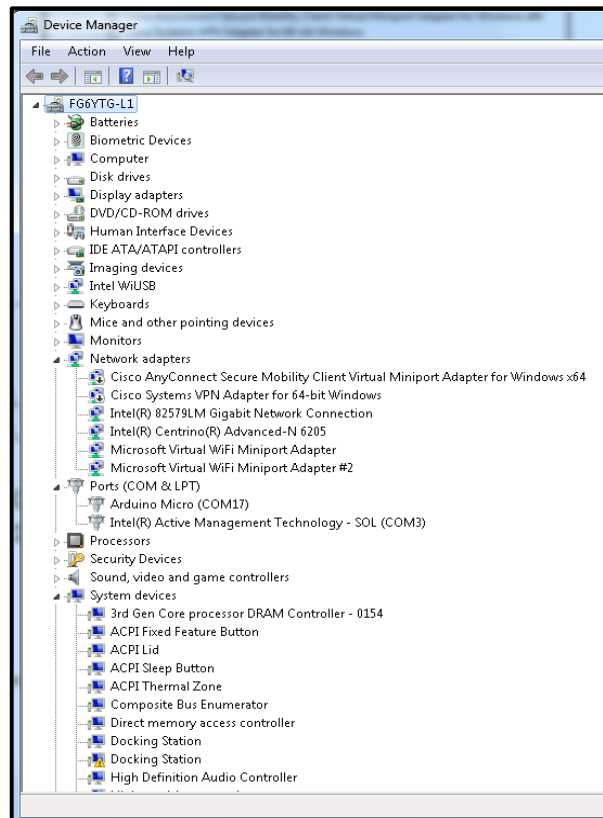
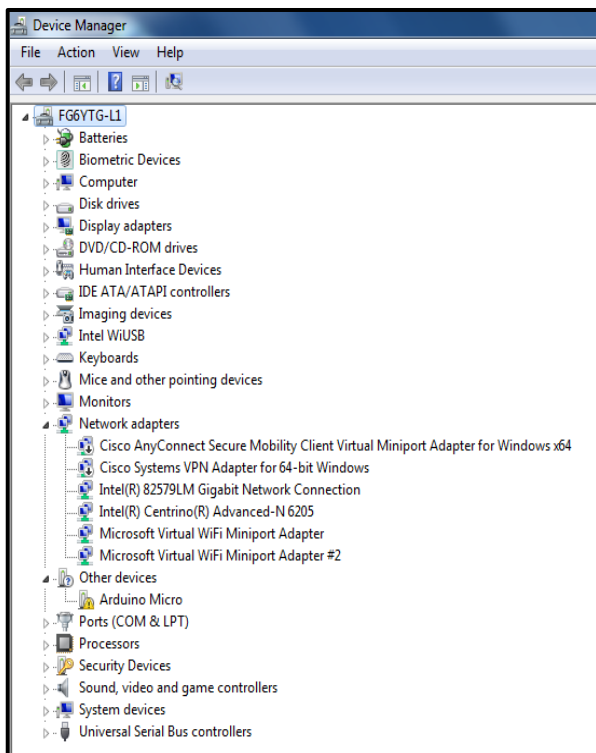
DEVICE DRIVER AND PROGRAM INSTALLATION

1. In case of the version up of this program, uninstall older version
 - a. Open Start menu > Control Panel > Programs and Features
 - b. Find 'LV8907 EVK'
 - c. Click right
 - d. Select 'Uninstall/Change'
 - e. Select "Remove the application from this computer."
 - f. Click 'OK'
 2. Unzip the program package
 3. Put the SW1 to the L position.
 4. Connect the power supply VS to the LV8907 EVB (either at J2 or J3).
 5. Connect the LV8907 EVB to the PC using the USB cable.
- Steps 4 to 12 show the driver installation procedure. It is required only for the first time when the LV8907 EVB is connected to the USB port.
6. The Windows OS will try to install driver on its own. Wait for 5-10 minutes. Installation will fail.
 7. Click on the Start Menu, and open the Control Panel.
 8. Open the Device Manager.
 9. Either under 'Ports (COM & LPT)' or 'Other Devices', you should see an open port named 'Arduino Micro'.

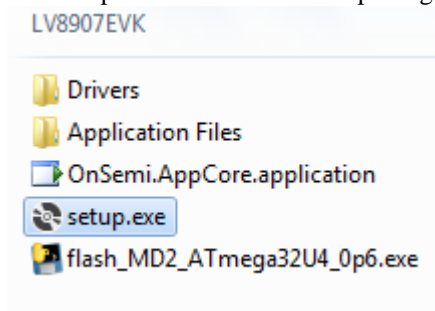
10. Right click on the 'Arduino Micro' port and choose the 'Update Driver Software' option.
 - a. If the update driver software option is not available, then the Windows OS is still trying to install the driver on its own. Please wait till the OS finishes self-try.
11. Next, choose the "Browse my computer for Driver software" option.
12. Finally, navigate to and select the driver file named '**arduino.inf**', located in the 'Drivers' folder.



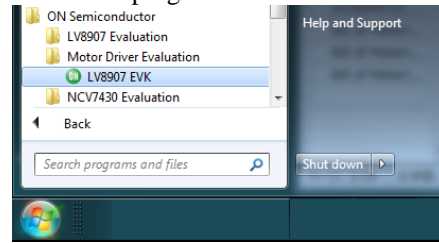
13. Windows will finish up the driver installation from there.
14. When the installation is successful, the recognized Arduino Micro port with the port number is shown in the Device Manager



15. Run setup.exe of the installation package



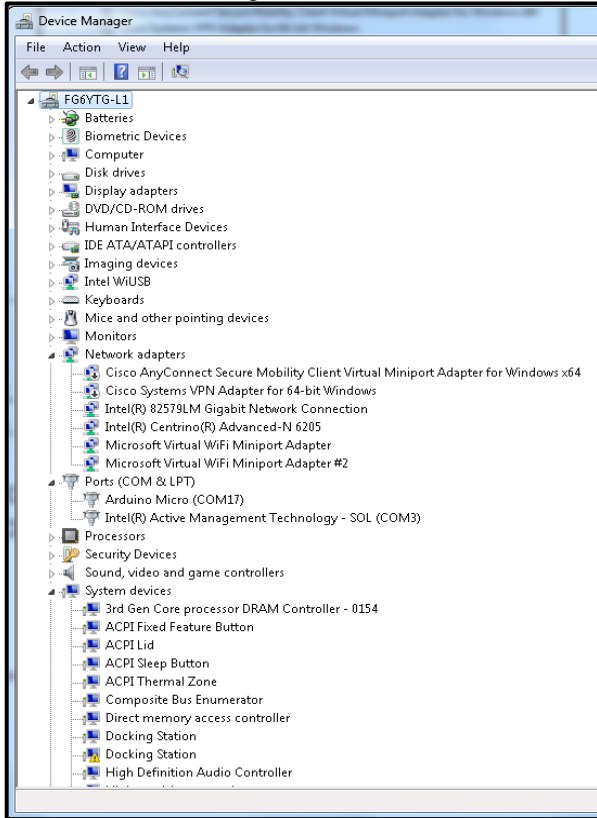
16. Launch the program



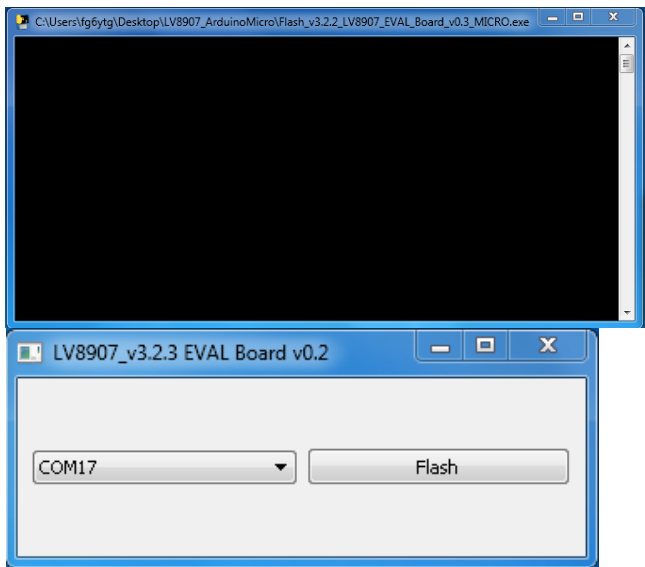
- **Programming the MCU**

When the firmware of the on-board MCU must be updated, following steps are to be followed. Basically, the firmware is pre-loaded before shipment.

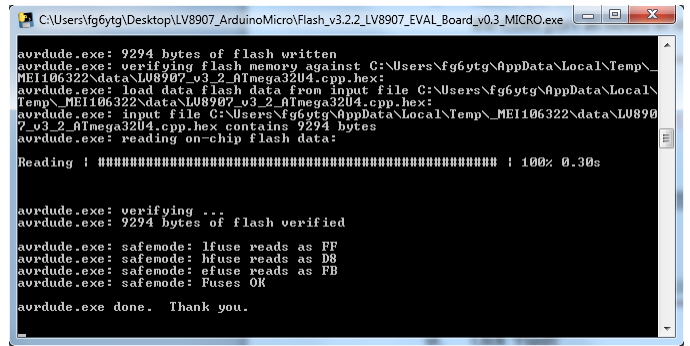
- i. Ensure that the EVB is powered up and the USB cable is connected.
- ii. Note down the COM port number of the Arduino Micro from the Device Manager window.



- iii. Launch 'flash_MD2_ATmega32U4_0p6.exe'. (The name of this file will be changed based on the revision.)
- iv. Two windows will open.



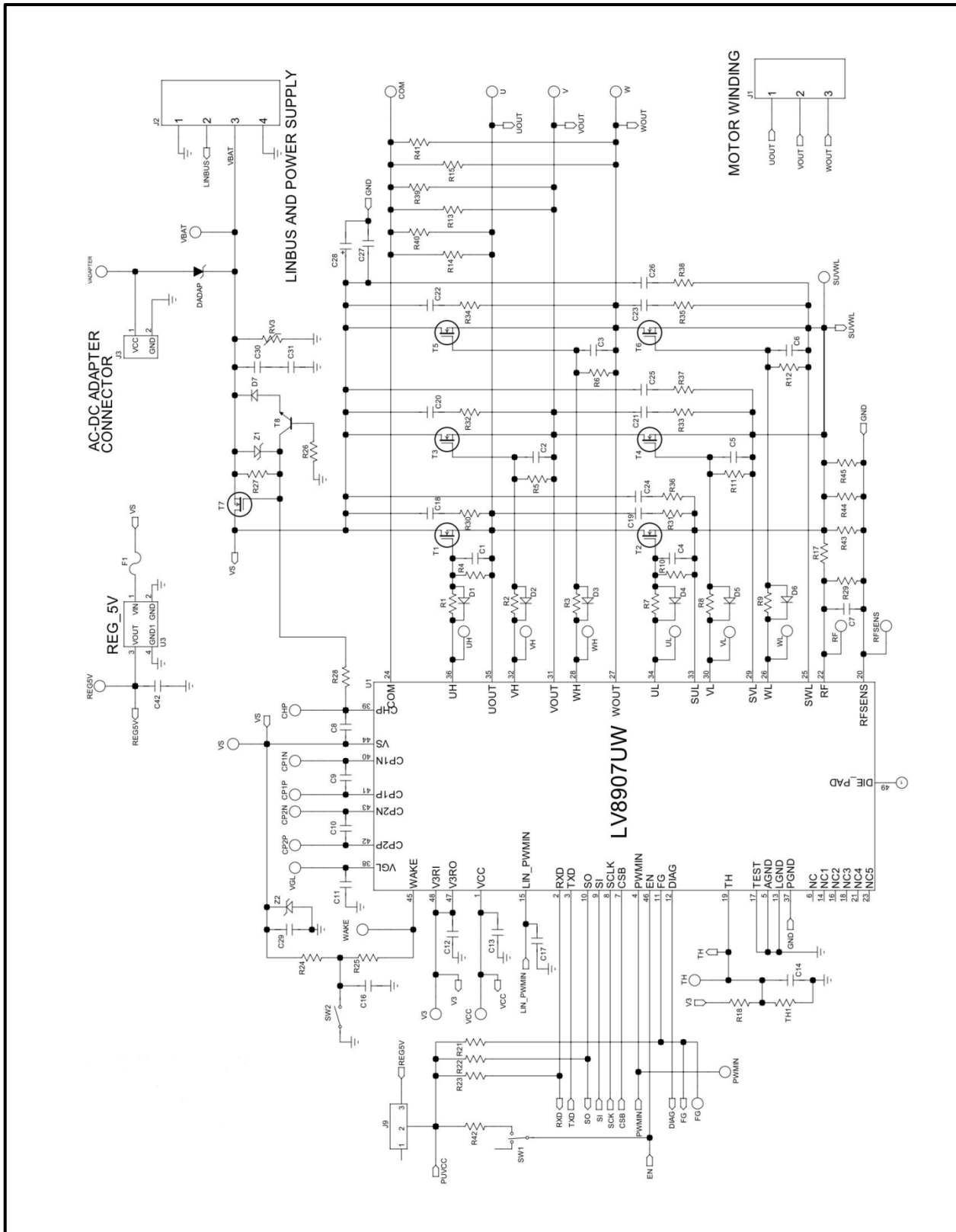
- v. Select the COM port from the drop-down menu to ensure that it matches with the COM port as noted in step (ii).
- vi. Click 'Flash'.
- vii. Programming of the on-board MCU is initiated.

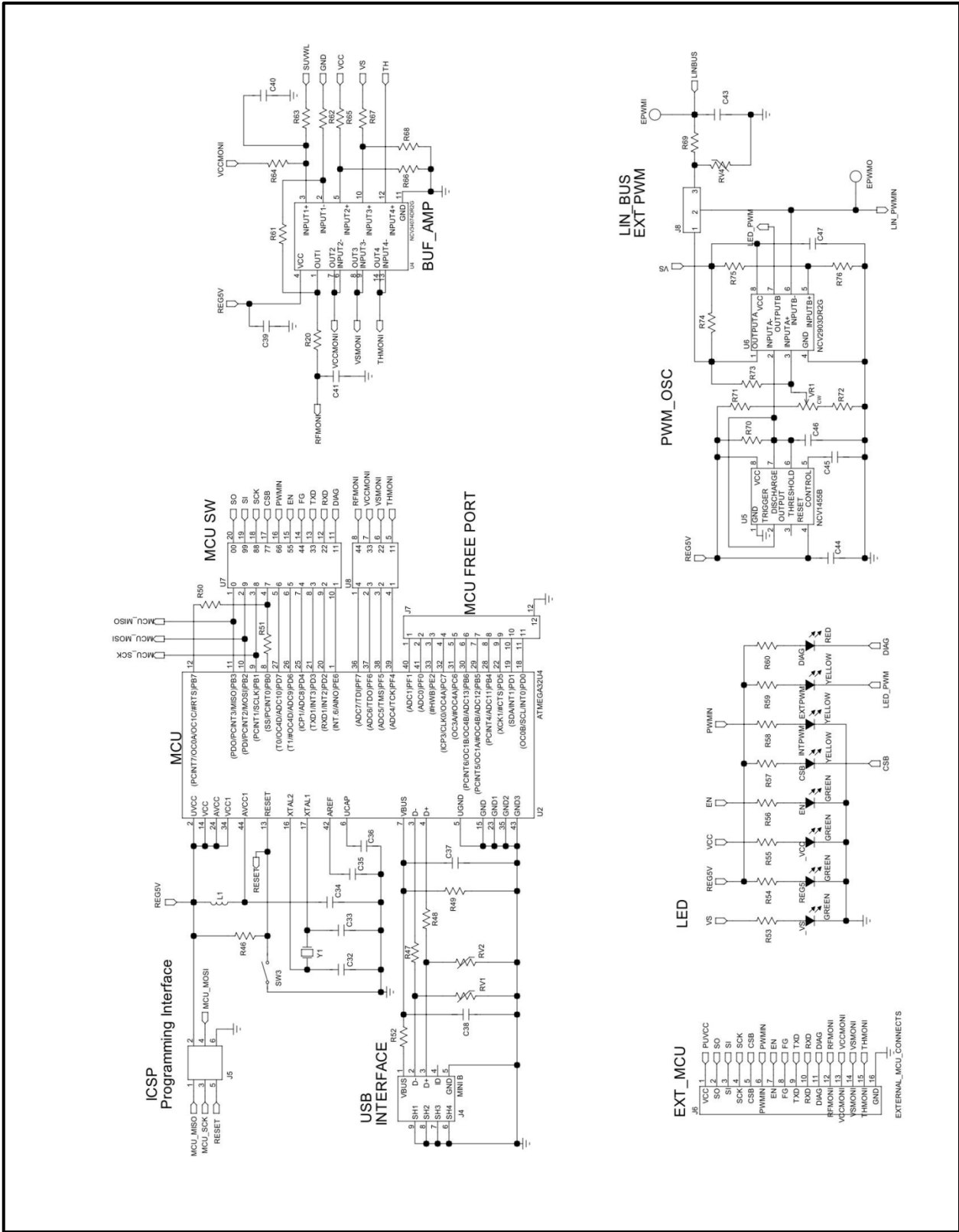


In case programming fails, unplug and re-plug the board, and re-launch the application. It may be because the required driver was not installed during first attempt.

- viii. If the user want to program the MCU with their own source code, then use the on-board ICSP interface (refer schematic in Appendix A) to program the MCU with an external programmer.

APPENDIX A SCHEMATIC (1/2)





BILL OF MATERIALS (1/3)

Bill of Materials for the LV8907UWGEVB Evaluation Board



Designator	QTY.	Description	Value	Tolerance	Footprint	Manufacturer	Part Number	Substitution Allowed	In -stalled	Lead Free
U1	1	Three-phase sensor-less BLDC motor controller with gate driver Microcontroller	-	-	SQFP48	ON Semiconductor	LV8907UW	No	Yes	Yes
U2	1	5V linear regulator	-	-	TQFP44	ATMEL	ATMEGA32U4	No	Yes	Yes
U3	1	Quad operational amplifier	-	-	SOT-223	ON Semiconductor	NCV8664ST50T3G	Yes	Yes	Yes
U4	1	Timer	-	-	SOT-223	ON Semiconductor	NCV34074DR2G	Yes	Yes	Yes
U5	1	Comparator	-	-	SOIC-8	ON Semiconductor	NCV1455BDR2G	Yes	Yes	Yes
U6	1	10-poles DIP switch	-	-	SOIC-8	ON Semiconductor	NCV2903DR2G	Yes	Yes	Yes
U7	1	4-poles DIP switch	-	-	Pitch 1.27mm	Omron	A6H-0101	Yes	Yes	Yes
U8	1	Motor winding connector	-	-	Pitch 1.27mm	Omron	A6H-4101	Yes	Yes	Yes
J1	1	LINBUS and power supply connector	-	-	Pitch 6.35mm	ON-SHORE	OSTT7030150	Yes	Yes	Yes
J2	1	Header for unused on-board MCU pins	-	-	Pitch 6.35mm	ON-SHORE	OSTT7020150	Yes	Yes	Yes
J3	1	AC-DC adapter connector	-	-	-	Singatron	2DC-0415D200	Yes	Yes	Yes
J4	1	MINI-B USB connector	-	-	-	Molex	67503-1020	Yes	Yes	Yes
J5	1	ICSP header	-	-	Pitch 2.54mm	USECONN	PH-1x03SG	Yes	No	Yes
J6	1	Header for external MCU signals	-	-	Pitch 2.54mm	USECONN	PH-1x03SG	Yes	No	Yes
J7	1	Header for unused on-board MCU pins	-	-	Pitch 2.54mm	USECONN	PH-1x03SG	Yes	No	Yes
J8	1	Jumper for selecting input PWM source	-	-	Pitch 2.54mm	USECONN	PH-1x03SG	Yes	Yes	Yes
J9	1	Jumper for selecting source of pull-up voltage	-	-	Pitch 2.54mm	USECONN	PH-1x03SG	Yes	Yes	Yes
F1	1	Fuse	-	-	4.55x3.24mm	BOURNS	MF-MSMF050	Yes	Yes	Yes
L1	1	Ferrite bead	-	-	1608 BIG	BOURNS	MH2029-300Y	Yes	Yes	Yes
T1-7	7	N-ch power MOSFETs	-	-	DPAK	ON Semiconductor	NVD5803NT4G	Yes	Yes	Yes
T8	1	NPN Transistor	-	-	SOT-23	ON Semiconductor	BC846ALT1G	Yes	Yes	Yes
D1-6	6	Diode	-	-	SOD-323	ON Semiconductor	MMDL6050T1G	Yes	No	Yes
D7	1	Diode	-	-	SOD-123	ON Semiconductor	SMMSD914T1G	Yes	Yes	Yes
DADAP	1	Schottky diode	-	-	SOD-123LF	ON Semiconductor	MBR230LSFT1G	Yes	Yes	Yes
Y1	1	Crystal oscillator	-	-	3.2x2.5mm	MERCURY	X32-16.000-12-30/30/4085	Yes	Yes	Yes
Z1	1	Zener diode	18V	-	SOT-23	ON Semiconductor	BZX84B18LT1G	Yes	Yes	Yes
Z2	1	Zener diode	39V	-	SOD-323	ON Semiconductor	MM3Z39VT1G	Yes	Yes	Yes

BILL OF MATERIALS (2/3)

Designator	QTY.	Description	Value	Tolerance	Footprint	Manufacturer	Part Number	Substi-tution Allowed	In -stalled	Lead Free
SW1	1	Switch for selecting EN signal level	-	-	10x2.5mm Pitch 2.54mm	WURTH	4.50301E+11	Yes	Yes	Yes
SW2-3	2	Push button switches	-	-	6.5x6.0mm	Panasonic	EVQ02F03W	Yes	Yes	Yes
RV1-2	2	Varistor	-	-	1.0x0.5mm	BOURNS	CG0603MLC-05LE	Yes	Yes	Yes
RV3-4	2	Varistor	-	-	1.0x0.5mm	BOURNS	CG0603MLC-24LE	Yes	No	Yes
VR1	1	Potentiometer	-	-	10x10mm	SUNTAN	TSR-3386K502R	Yes	Yes	Yes
DIAG EN	1	LED	RED	-	1608	STANLEY	FR1111C-TR	Yes	Yes	Yes
REG5_VCC_VS_C5B	4	LEDs	GREEN	-	1608	STANLEY	YBG1111C-TR	Yes	Yes	Yes
EXTPWM_INTPWM_C1-6	3	LEDs	YELLOW	-	1608	STANLEY	FY1111C-TR	Yes	Yes	Yes
C7 C18-26 C40-41	6	Capacitor	1000p, 50V	±5%	1608 BIG	MURATA	GRM1882C1H102JA	Yes	Yes	Yes
C8 C11-13	12	Capacitor	-	±10%	1608 BIG	MURATA	GRM188B31H***K	Yes	No	Yes
C9-10	4	Capacitor	4.7u, 50V	±10%	3225 BIG	MURATA	GRM32ER71H475KA	Yes	Yes	Yes
C14 C16-17 C27 C30-31	2	Capacitor	1u, 50V	±10%	3216 BIG	MURATA	GRM31MB31H105K	Yes	Yes	Yes
C35 C37 C39 C44-45 C47	3	Capacitor	0.01u, 50V	±10%	1608 BIG	MURATA	GRM188B11H103K	Yes	Yes	Yes
C28	9	CAPACITOR	0.1u, 50V	±10%	1608 BIG	MURATA	GRM188B31H104K	Yes	Yes	Yes
C29	1	Electrolytic capacitor	2200u	±20%	Pitch 7.5mm	RUBYCON	50RX302200M18x40	Yes	Yes	Yes
C32-33	1	Capacitor	10u, 50V	±10%	3225 BIG	MURATA	GRM32ER71H106K	Yes	Yes	Yes
C34 C36 C46	2	Capacitor	22p, 50V	±5%	1608 BIG	MURATA	GRM1882C1H220JA	Yes	Yes	Yes
C38 C42	3	Capacitor	1u, 25V	±10%	1608 BIG	MURATA	GRM188B31E105K	Yes	Yes	Yes
C43	2	Capacitor	10u, 25V	±10%	3216 BIG	MURATA	GRM31CR71E106K	Yes	Yes	Yes
R1-3 R7-9 R17	1	Capacitor	220p, 50V	±5%	1608 BIG	MURATA	GRM1882C1H221JA	Yes	Yes	Yes
R4-6 R10-12	7	Resistor	100, 0.1W	±5%	1608 BIG	KOA	RK73B1JTxxxJ	Yes	Yes	Yes
R13-15 R20	6	Resistor	100k, 0.1W	±5%	1608 BIG	KOA	RK73B1JTxxxJ	Yes	Yes	Yes
R54-60 R62-63 R66 R68 R74 R18	16	Resistor	1k, 0.1W	±5%	1608 BIG	KOA	RK73B1JTxxxJ	Yes	Yes	Yes
R21-23 R42	1	Resistor	1k, 0.1W	±1%	1608 BIG	KOA	RK73B1JTxxxJ	Yes	Yes	Yes
R24 R26	4	Resistor	5.1k, 0.1W	±5%	1608 BIG	KOA	RK73B1JTxxxJ	Yes	Yes	Yes
R25 R69	2	Resistor	22k, 0.1W	±5%	1608 BIG	KOA	RK73B1JTxxxJ	Yes	Yes	Yes
R27	2	Resistor	51, 0.1W	±5%	1608 BIG	KOA	RK73B1JTxxxJ	Yes	Yes	Yes
	1	Resistor	47k, 0.1W	±5%	1608 BIG	KOA	RK73B1JTxxxJ	Yes	Yes	Yes

BILL OF MATERIALS (3/3)

Designator	QTY.	Description	Value	Tolerance	Footprint	Manufacturer	Part Number	Substi-tution Allowed	In-stalled	Lead Free
R28 R71-72	3	Resistor	4.7k, 0.1W	±5%	1608 BIG	KOA	RK73B1JTxxxJ	Yes	Yes	Yes
R29-41 R51	14	Resistor	-	±5%	1608 BIG	KOA	RK73B1JTxxxJ	Yes	No	Yes
R43-45	3	Current sense resistors	10m	-	6.3x3.1mm	SUSUMU	KRL3264-C-R010 -F-T1	Yes	Yes	Yes
R46 R49 R61 R64 R67 R75-76	7	Resistor	10k, 0.1W	±5%	1608 BIG	KOA	RK73B1JTxxxJ	Yes	Yes	Yes
R47-48 R52	3	Resistor	22, 0.1W	±5%	1608 BIG	KOA	RK73B1JTxxxJ	Yes	Yes	Yes
R50	1	Resistor	1, 0.1W	±5%	1608 BIG	KOA	RK73B1JTxxxJ	Yes	Yes	Yes
R53	1	Resistor	2k, 0.1W	±5%	1608 BIG	KOA	RK73B1JTxxxJ	Yes	Yes	Yes
R65	1	Resistor	3.9k, 0.1W	±5%	1608 BIG	KOA	RK73B1JTxxxJ	Yes	Yes	Yes
R70	1	Resistor	16k, 0.1W	±5%	1608 BIG	KOA	RK73B1JTxxxJ	Yes	Yes	Yes
R73	1	Resistor	1M, 0.1W	±5%	1608 BIG	KOA	RK73B1JTxxxJ	Yes	Yes	Yes
TH1	1	NTC thermistor	-	-	1608 BIG	-	-	Yes	No	-
USB cable	1	A-MiniB	-	-	-	XIAMEN UME	USBcable A-miniB	Yes	Yes	Yes

ON Semiconductor and the ON logo are registered trademarks of Semiconductor Components Industries, LLC (SCILLC) or its subsidiaries in the United States and/or other countries. SCILLC owns the rights to a number of patents, trademarks, copyrights, trade secrets, and other intellectual property. A listing of SCILLC's product/patent coverage may be accessed at www.onsemi.com/site/pdf/Patent-Marking.pdf. SCILLC reserves the right to make changes without further notice to any products herein. SCILLC makes no warranty, representation or guarantee regarding the suitability of its products for any particular purpose, nor does SCILLC assume any liability arising out of the application or use of any product or circuit, and specifically disclaims any and all liability, including without limitation special, consequential or incidental damages. "Typical" parameters which may be provided in SCILLC data sheets and/or specifications can and do vary in different applications and actual performance may vary over time. All operating parameters, including "Typicals" must be validated for each customer application by customer's technical experts. SCILLC does not convey any license under its patent rights nor the rights of others. SCILLC products are not designed, intended, or authorized for use as components in systems intended for surgical implant into the body, or other applications intended to support or sustain life, or for any other application in which the failure of the SCILLC product could create a situation where personal injury or death may occur. Should Buyer purchase or use SCILLC products for any such unintended or unauthorized application, Buyer shall indemnify and hold SCILLC and its officers, employees, subsidiaries, affiliates, and distributors harmless against all claims, costs, damages, and expenses, and reasonable attorney fees arising out of, directly or indirectly, any claim of personal injury or death associated with such unintended or unauthorized use, even if such claim alleges that SCILLC was negligent regarding the design or manufacture of the part. SCILLC is an Equal Opportunity/Affirmative Action Employer. This literature is subject to all applicable copyright laws and is not for resale in any manner.

X-ON Electronics

Largest Supplier of Electrical and Electronic Components

Click to view similar products for [Power Management IC Development Tools](#) *category:*

Click to view products by [ON Semiconductor](#) *manufacturer:*

Other Similar products are found below :

[EVAL-ADM1168LQEBZ](#) [EVB-EP5348UI](#) [MIC23451-AAAYFL EV](#) [MIC5281YMME EV](#) [DA9063-EVAL](#) [ADP122-3.3-EVALZ](#) [ADP130-0.8-EVALZ](#) [ADP130-1.2-EVALZ](#) [ADP130-1.5-EVALZ](#) [ADP130-1.8-EVALZ](#) [ADP1712-3.3-EVALZ](#) [ADP1714-3.3-EVALZ](#) [ADP1715-3.3-EVALZ](#) [ADP1716-2.5-EVALZ](#) [ADP1740-1.5-EVALZ](#) [ADP1752-1.5-EVALZ](#) [ADP1828LC-EVALZ](#) [ADP1870-0.3-EVALZ](#) [ADP1871-0.6-EVALZ](#) [ADP1873-0.6-EVALZ](#) [ADP1874-0.3-EVALZ](#) [ADP1882-1.0-EVALZ](#) [ADP199CB-EVALZ](#) [ADP2102-1.25-EVALZ](#) [ADP2102-1.875EVALZ](#) [ADP2102-1.8-EVALZ](#) [ADP2102-2-EVALZ](#) [ADP2102-3-EVALZ](#) [ADP2102-4-EVALZ](#) [ADP2106-1.8-EVALZ](#) [ADP2147CB-110EVALZ](#) [AS3606-DB](#) [BQ24010EVM](#) [BQ24075TEVM](#) [BQ24155EVM](#) [BQ24157EVM-697](#) [BQ24160EVM-742](#) [BQ24296MEVM-655](#) [BQ25010EVM](#) [BQ3055EVM](#) [NCV891330PD50GEVB](#) [ISLUSBI2CKIT1Z](#) [LM2744EVAL](#) [LM2854EVAL](#) [LM3658SD-AEV/NOPB](#) [LM3658SDEV/NOPB](#) [LM3691TL-1.8EV/NOPB](#) [LM4510SDEV/NOPB](#) [LM5033SD-EVAL](#) [LP38512TS-1.8EV](#)