

Type CBS-xxP Automotive Circuit Breaker Rail Interior Mounting



www.optifuse.com

(619) 593-5050

To be used with ACB-N or MOCB-N Circuit Breakers.

CBS-2P can accommodate up to 2 Circuit Breakers.

CBS-4P can accommodate up to 4 Circuit Breakers.

CBS-6P can accommodate up to 6 Circuit Breakers.

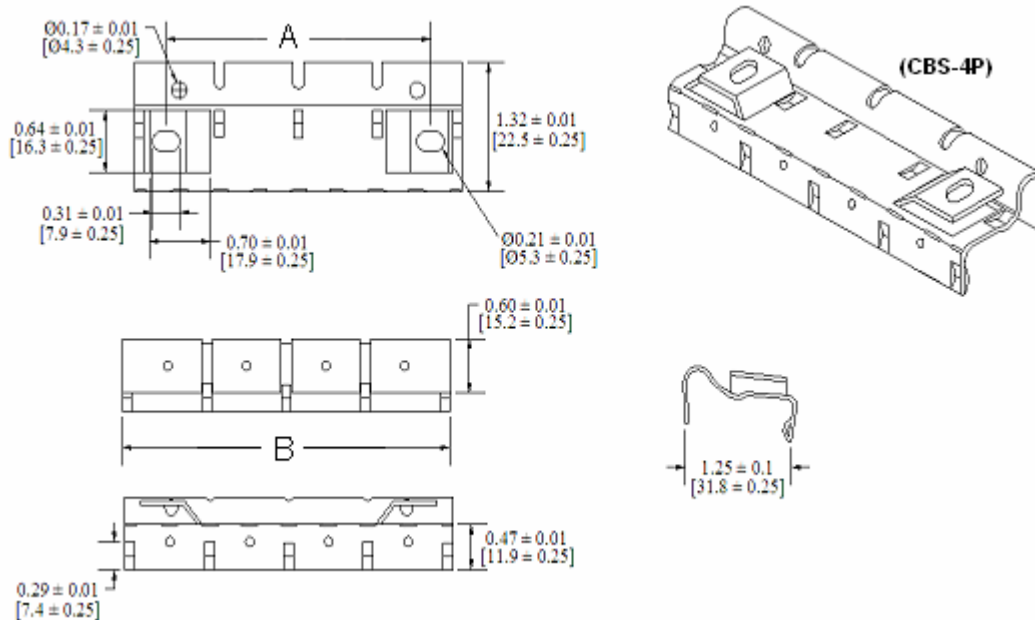
CBS-8P can accommodate up to 8 Circuit Breakers.

CBS-10P can accommodate up to 10 Circuit Breakers.

Specifications:

Material: Steel plated with yellow zinc dichromate

Mechanical Dimensions: Inches [mm]



| Part Number | Circuit Breakers | A = Mounting Hole Spacing | B= Overall Length |
|-------------|------------------|---------------------------|------------------------|
| CBS-2P | 2 | 1.21±0.01 [30.7±0.25] | 1.94±0.01 [49.4±0.25] |
| CBS-4P | 4 | 3.01±0.01 [76.5±0.25] | 3.76±0.01 [95.6±0.25] |
| CBS-6P | 6 | 4.81±0.01 [122.3±0.25] | 5.58±0.01 [141.8±0.25] |
| CBS-8P | 8 | 6.62±0.01 [168.1±0.25] | 7.40±0.01 [188.0±0.25] |
| CBS-10P | 10 | 8.42±0.01 [213.9±0.25] | 9.22±0.01 [234.2±0.25] |

X-ON Electronics

Largest Supplier of Electrical and Electronic Components

Click to view similar products for [Optifuse manufacturer](#):

Other Similar products are found below :

[FSC-3.5A](#) [TSA-250MA](#) [BLR-304](#) [BLR-504](#) [BLC-05-GTA](#) [BLR-I-504](#) [BLM-304](#) [CBW57-EL4-10A](#) [FPK-10A](#) [FPK-1A](#) [FPK-30A](#) [LPM-08](#)
[LPX-23B-08R-LOOP](#) [FPK-12A](#) [FPK-15A](#) [FPK-20A](#) [FPK-25A](#) [FPK-2A](#) [FPK-3A](#) [FPK-4A](#) [FPK-5A](#) [FPK-6A](#) [FPK-7A](#) [FPK-8A](#) [FPK-R-](#)
[1.5A](#) [FPK-R-10A](#) [FPK-R-15A](#) [FPK-R-1A](#) [FPK-R-20A](#) [FPK-R-25A](#) [FPK-R-2A](#) [FPK-R-30A](#) [FPK-R-3A](#) [FPK-R-4A](#) [FPK-R-5A](#) [FPK-R-6A](#)
[FPK-R-8A](#) [PMG-KB-01-Q2S](#) [LPM-01B-12R](#) [ACB-12-V-50A](#) [LPR-13C-10R](#) [ACBP4-PM-5A](#) [BLR-306](#) [ACB-12-V-30A](#) [CBW57-EL4-5A](#)
[CBW57-ES-5A](#) [CBW57-PB-10A-5X](#) [CBW57-PS-10A-5X](#) [CBW57-PS-3A-1X](#) [CBW28-1A](#)