

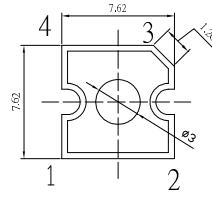
■ **Features**

- High Luminous Super Flux Output
- 5  $\phi$  Standard Directivity
- UV Resistant Epoxy
- Water Clear Type

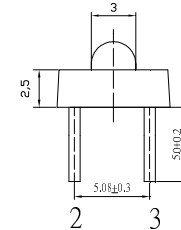
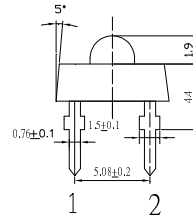
■ **Applications**

- Traffic Signal
- Backlighting
- Signal and channel letter
- Other Lighting

■ **Outline Dimension**



Unit:mm  
Tolerance:±0.20mm  
unless otherwise noted  
1,4 Cathode  
2,3 Anode



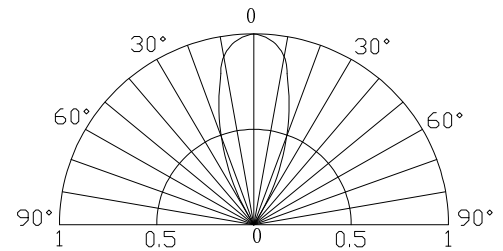
■ **Absolute Maximum Rating**

(Ta=25°C)

| Item                       | Symbol           | Value      | Unit |
|----------------------------|------------------|------------|------|
| DC Forward Current         | I <sub>F</sub>   | 70         | mA   |
| Pulse Forward Current#     | I <sub>FP</sub>  | 120        | mA   |
| Reverse Voltage            | V <sub>R</sub>   | 5          | V    |
| Power Dissipation          | P <sub>D</sub>   | 182        | mW   |
| Operating Temperature      | T <sub>opr</sub> | -30 ~ +85  | °C   |
| Storage Temperature        | T <sub>stg</sub> | -40 ~ +100 | °C   |
| Lead Soldering Temperature | T <sub>sol</sub> | 260°C/5sec | -    |

#Pulse width Max.10ms Duty ratio max 1/10

■ **Directivity**



■ **Electrical -Optical Characteristics**

(Ta=25°C)

| Item                 | Symbol            | Condition            | Min.  | Typ.  | Max. | Unit |
|----------------------|-------------------|----------------------|-------|-------|------|------|
| DC Forward Voltage*1 | V <sub>F</sub>    | I <sub>F</sub> =20mA | 1.8   | 2.1   | 2.5  | V    |
|                      |                   | I <sub>F</sub> =70mA | -     | 2.5   | 2.9  |      |
| DC Reverse Current   | I <sub>R</sub>    | V <sub>R</sub> =5V   | -     | -     | 10   | μA   |
| Domi. Wavelength*2   | λ <sub>D</sub>    | I <sub>F</sub> =70mA | 585   | 590   | 595  | nm   |
| Luminous Flux*3      | Φ <sub>v</sub>    | I <sub>F</sub> =70mA | 8     | 10    | -    | lm   |
| Luminous Intensity*4 | I <sub>v</sub>    | I <sub>F</sub> =70mA | 14400 | 18000 | -    | mcd  |
| 50% Power Angle      | 2θ <sub>1/2</sub> | I <sub>F</sub> =70mA | -     | 40    | -    | deg  |

\*1 Tolerance of measurements of forward voltage is ±0.1V

\*2 Tolerance of measurements of dominant wavelength is ±1nm

\*3 Tolerance of measurements of luminous flux is ±15%

\*4 Tolerance of measurements of luminous intensity is ±15%

■ **Maximum Forward DC Current**

## X-ON Electronics

Largest Supplier of Electrical and Electronic Components

*Click to view similar products for [Optosupply](#) manufacturer:*

Other Similar products are found below :

[OECCDD01-300](#) [OEHW2030GF](#) [OEHW2045GF](#) [OEHW2060GF](#) [OEHW2090GF](#) [OKLEDT3050G5V](#) [OKLEDT3050RBV](#)  
[OKLEDT3050RBW](#) [OKLEDT3050RPV](#) [OKLEDT3050RPW](#) [OKLEDT3050WAW](#) [OKLEDT30606A](#) [OKLEDT3100B5](#) [OKLEDT3100G8](#)  
[OKLEDT3100M3](#) [OKLEDT3100M4](#) [OKLEDT3100R6](#) [OKLEDT3100W6](#) [OKLEDT3100Y5](#) [OKLEDT31203A](#) [OKLEDT31206A](#)  
[OKLEDT5050B5W](#) [OKLEDT5050G5W](#) [OKLEDT5050RBV](#) [OKLEDT5050RBW](#) [OKLEDT5050RPW](#) [OKLEDT5050TAW](#)  
[OKLEDT5050WAV](#) [OKLEDT50606A](#) [OKLEDT50606B](#) [OKLEDT5100B5](#) [OKLEDT5100G8](#) [OKLEDT5100M3](#) [OKLEDT5100R6](#)  
[OKLEDT5100W6](#) [OKLEDT5100WA](#) [OKLEDT5100Y5](#) [OKLEDT51203A](#) [OKLEDT8050G5V](#) [OKLEDT8050G5W](#) [OKLEDT8050M3V](#)  
[OKLEDT8050R5V](#) [OKLEDT8050RBV](#) [OKLEDT8050RPW](#) [OKLEDT8050WAW](#) [OPDK-G5DA8B31F](#) [OPDK-W5DK8B31F](#) [OPDK-](#)  
[Y5CA8B31F](#) [OPDO-M5DK8B31F](#) [OS2MDK3131A](#)