

<b>0.56 Inch Four Digit Display</b>
<b>OSL40562-IX (Common Anode type)</b>
<b>OSL40562-LX (Common Cathode type)</b>

■ **Features**

- 0.56 Inch Four Digit Display
- Long lifetime operation
- IC compatible
- Low power dissipation

■ **Applications**

- Counting device
- Clock

■ **Photo**



■ **Absolute Maximum Rating** (Ta=25°C)

Item	Symbol	Value		Unit
		RA/R/YG/Y	B/G/W	
DC Forward Current	I <sub>F</sub>	20	20	mA
Pulse Forward Current#	I <sub>FP</sub>	100	100	mA
Reverse Voltage	V <sub>R</sub>	5	5	V
Power Dissipation	P <sub>t</sub>	44	66	mW
Operating Temperature	Topr	-30 ~ +70		°C
Storage Temperature	Tstg	-40~ +85		°C
Lead Soldering Temperature(1.6mm from seating plane)	Tsol	260°C/5sec		°C

#Pulse width Max.10ms Duty ratio max 1/10

■ **Electrical -Optical Characteristics** (Ta=25°C)

Part Number	Color		V <sub>F</sub> (V)			I <sub>R</sub> (μA)	I <sub>v</sub> (mcd)			λD(nm)		
			Min.	Typ.	Max.	Max.	Min.	Typ.	Max.	Min.	Typ.	Max.
			I <sub>F</sub> =20mA			V <sub>R</sub> =5V	I <sub>F</sub> =20mA					
OSL40562-IW(LW)	White	W	2.8	3.1	3.6	20	-	90	-	X=0.27,Y=0.28		
OSL40562-IB(LB)	Blue	B	2.8	3.1	3.6	20	-	50	-	460	465	470
OSL40562-IG(LG)	Pure Green	G	2.8	3.1	3.6	20	-	200	-	515	520	530
OSL40562-IYG(LYG)	Yellow Green	YG	1.8	2.1	2.6	20	-	12	-	565	571	575
OSL40562-IY(LY)	Yellow	Y	1.8	2.1	2.5	20	-	60	-	585	590	595
OSL40562-IR(LR)	Red	R	1.8	2.1	2.5	20	-	30	-	625	630	640
OSL40562-IRA(LRA)	High Luminance Red	RA	1.8	2.1	2.5	20	-	100	-	620	625	630

\*1 Tolerance of measurements of chromaticity coordinate is ±10%

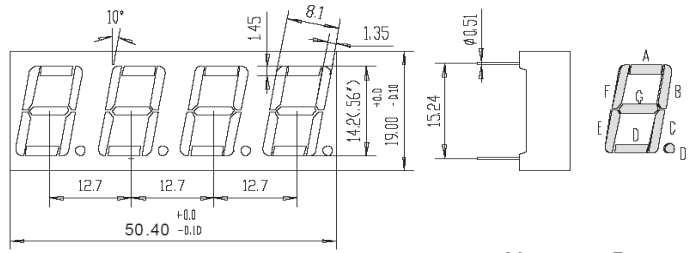
\*2 Tolerance of measurements of dominant wavelength is ±1nm

\*3 Tolerance of measurements of luminous intensity is ±15%

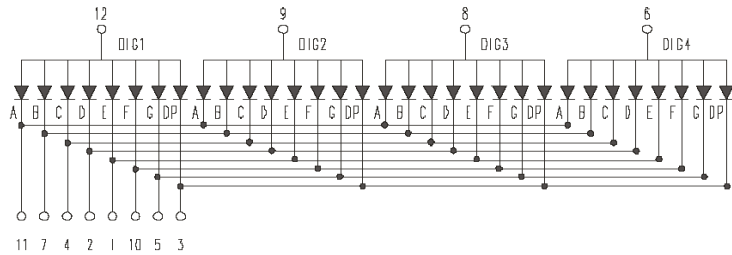
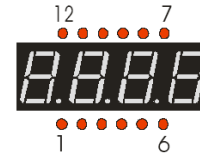
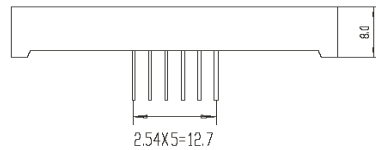
\*4 Tolerance of measurements of forward voltage is±0.1V

**■ Package Dimensions and Pin Function**

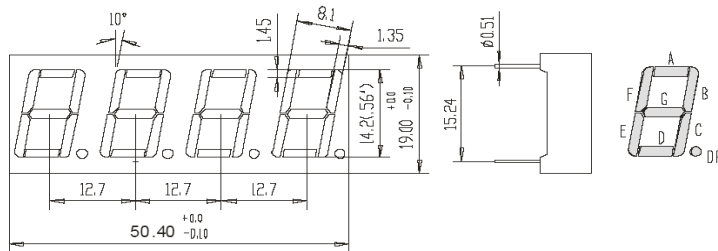
**OSL40562-IX  
(Common Anode type)**



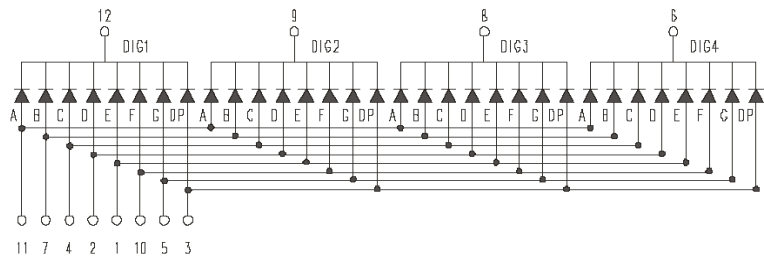
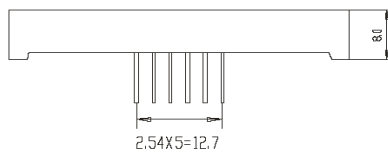
Note:  
1, Unit : mm( Tolerance:±0.25mm unless otherwise noted)  
2, The slope angle of any PIN may be±5.0°Max



**OSL40562-LX  
(Common Cathode type)**



Note:  
1, Unit : mm( Tolerance:±0.25mm unless otherwise noted)  
2, The slope angle of any PIN may be±5.0°Max



## X-ON Electronics

Largest Supplier of Electrical and Electronic Components

*Click to view similar products for [Optosupply](#) manufacturer:*

Other Similar products are found below :

[OECCDD01-300](#) [OEHW2030GF](#) [OEHW2045GF](#) [OEHW2060GF](#) [OEHW2090GF](#) [OKLEDT3050G5V](#) [OKLEDT3050RBV](#)  
[OKLEDT3050RBW](#) [OKLEDT3050RPV](#) [OKLEDT3050RPW](#) [OKLEDT3050WAW](#) [OKLEDT30606A](#) [OKLEDT3100B5](#) [OKLEDT3100G8](#)  
[OKLEDT3100M3](#) [OKLEDT3100M4](#) [OKLEDT3100R6](#) [OKLEDT3100W6](#) [OKLEDT3100Y5](#) [OKLEDT31203A](#) [OKLEDT31206A](#)  
[OKLEDT5050B5W](#) [OKLEDT5050G5W](#) [OKLEDT5050RBV](#) [OKLEDT5050RBW](#) [OKLEDT5050RPW](#) [OKLEDT5050TAW](#)  
[OKLEDT5050WAV](#) [OKLEDT50606A](#) [OKLEDT50606B](#) [OKLEDT5100B5](#) [OKLEDT5100G8](#) [OKLEDT5100M3](#) [OKLEDT5100R6](#)  
[OKLEDT5100W6](#) [OKLEDT5100WA](#) [OKLEDT5100Y5](#) [OKLEDT51203A](#) [OKLEDT8050G5V](#) [OKLEDT8050G5W](#) [OKLEDT8050M3V](#)  
[OKLEDT8050R5V](#) [OKLEDT8050RBV](#) [OKLEDT8050RPW](#) [OKLEDT8050WAW](#) [OPDK-G5DA8B31F](#) [OPDK-W5DK8B31F](#) [OPDK-](#)  
[Y5CA8B31F](#) [OPDO-M5DK8B31F](#) [OS2MDK3131A](#)