

|  |
|--|
| <b>0.56 Inch Four Digit Display</b>      |
| <b>OSL40562-IX (Common Anode type)</b>   |
| <b>OSL40562-LX (Common Cathode type)</b> |

■ **Features**

- 0.56 Inch Four Digit Display
- Long lifetime operation
- IC compatible
- Low power dissipation

■ **Applications**

- Counting device
- Clock

■ **Photo**



■ **Absolute Maximum Rating** (Ta=25°C)

| Item   | Symbol          | Value      |       | Unit |
|--|-----------------|------------|-------|------|
|  |                 | RA/R/YG/Y  | B/G/W |      |
| DC Forward Current                                   | I <sub>F</sub>  | 20         | 20    | mA   |
| Pulse Forward Current#                               | I <sub>FP</sub> | 100        | 100   | mA   |
| Reverse Voltage                                      | V <sub>R</sub>  | 5          | 5     | V    |
| Power Dissipation                                    | P <sub>t</sub>  | 44         | 66    | mW   |
| Operating Temperature                                | Topr            | -30 ~ +70  |       | °C   |
| Storage Temperature                                  | Tstg            | -40~ +85   |       | °C   |
| Lead Soldering Temperature(1.6mm from seating plane) | Tsol            | 260°C/5sec |       | °C   |

#Pulse width Max.10ms Duty ratio max 1/10

■ **Electrical -Optical Characteristics** (Ta=25°C)

| Part Number       | Color              |    | V <sub>F</sub> (V)   |      |      | I <sub>R</sub> (μA) | I <sub>v</sub> (mcd) |      |      | λD(nm)        |      |      |
|-------------------|--------------------|----|----------------------|------|------|---------------------|----------------------|------|------|---------------|------|------|
|                   |                    |    | Min.                 | Typ. | Max. | Max.                | Min.                 | Typ. | Max. | Min.          | Typ. | Max. |
|                   |                    |    | I <sub>F</sub> =20mA |      |      | V <sub>R</sub> =5V  | I <sub>F</sub> =20mA |      |      |               |      |      |
| OSL40562-IW(LW)   | White              | W  | 2.8                  | 3.1  | 3.6  | 20                  | -                    | 90   | -    | X=0.27,Y=0.28 |      |      |
| OSL40562-IB(LB)   | Blue               | B  | 2.8                  | 3.1  | 3.6  | 20                  | -                    | 50   | -    | 460           | 465  | 470  |
| OSL40562-IG(LG)   | Pure Green         | G  | 2.8                  | 3.1  | 3.6  | 20                  | -                    | 200  | -    | 515           | 520  | 530  |
| OSL40562-IYG(LYG) | Yellow Green       | YG | 1.8                  | 2.1  | 2.6  | 20                  | -                    | 12   | -    | 565           | 571  | 575  |
| OSL40562-IY(LY)   | Yellow             | Y  | 1.8                  | 2.1  | 2.5  | 20                  | -                    | 60   | -    | 585           | 590  | 595  |
| OSL40562-IR(LR)   | Red                | R  | 1.8                  | 2.1  | 2.5  | 20                  | -                    | 30   | -    | 625           | 630  | 640  |
| OSL40562-IRA(LRA) | High Luminance Red | RA | 1.8                  | 2.1  | 2.5  | 20                  | -                    | 100  | -    | 620           | 625  | 630  |

\*1 Tolerance of measurements of chromaticity coordinate is ±10%

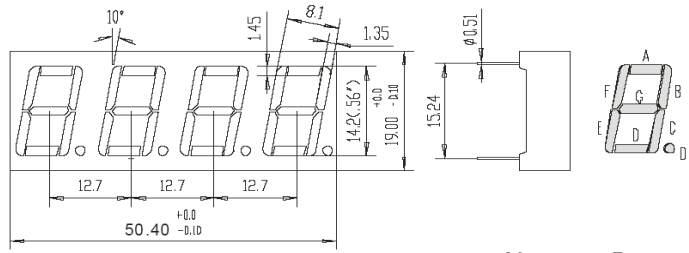
\*2 Tolerance of measurements of dominant wavelength is ±1nm

\*3 Tolerance of measurements of luminous intensity is ±15%

\*4 Tolerance of measurements of forward voltage is±0.1V

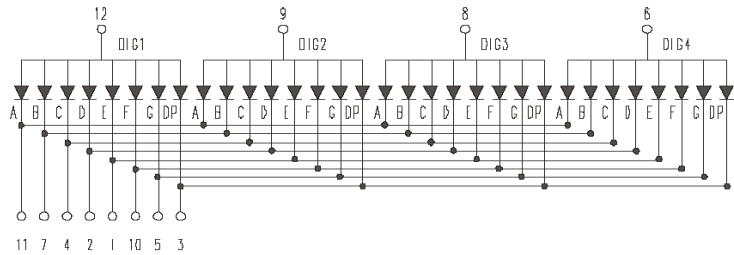
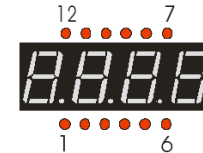
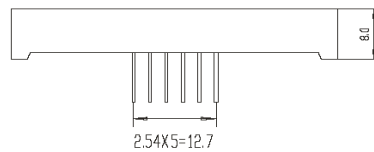
**■ Package Dimensions and Pin Function**

**OSL40562-IX  
(Common Anode type)**

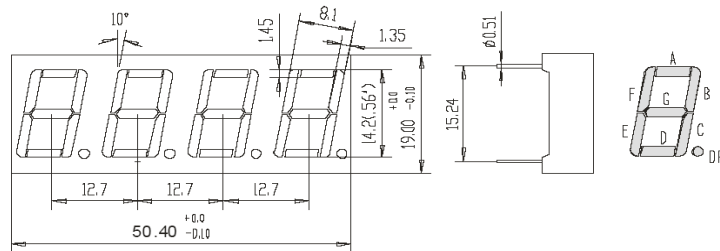


Note:

- 1, Unit : mm (Tolerance: ±0.25mm unless otherwise noted)
- 2, The slope angle of any PIN may be ±5.0° Max

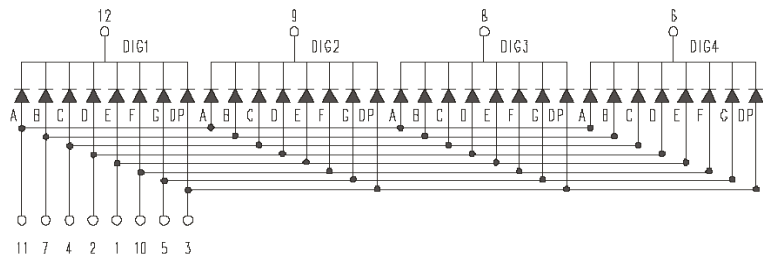
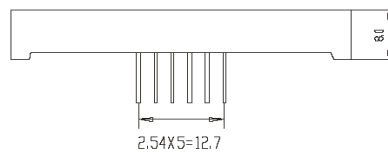


**OSL40562-LX  
(Common Cathode type)**



Note:

- 1, Unit : mm (Tolerance: ±0.25mm unless otherwise noted)
- 2, The slope angle of any PIN may be ±5.0° Max



## X-ON Electronics

Largest Supplier of Electrical and Electronic Components

*Click to view similar products for [LED Displays & Accessories](#) category:*

*Click to view products by [Optosupply](#) manufacturer:*

Other Similar products are found below :

[LTC-2721WC](#) [LTC-4627G](#) [LTC-4627WC](#) [LTD-5021AWC](#) [LTM-8522G](#) [LTS-3361JG-06](#) [ELS-316SYGWA/S530-E2](#) [1668](#) [HT-F196NB-5323](#) [SA03-12EWA](#) [LDQ-N514RI](#) [LDS-A3506RD](#) [SI-B9T151550WW](#) [SI-B9V171550WW](#) [SLC-3PF-WL](#) [1624](#) [LTC-2621JD](#) [LTC-2623WC](#) [LTC-4624P](#) [LTC-4627JD](#) [LTP-1057AHR](#) [LTP-1457AKR](#) [LTP-3784G-01](#) [LTS-4812SKR-P](#) [LTS-6780P](#) [HV-7W30-6829](#) [CA12240\\_MINNIE-WWW-MTG-ASSY](#) [DA43-11GWA](#) [LDQ-N3402RI](#) [LDQ-N3606RI](#) [LDS-A3924RI-SI](#) [86004CB830](#) [LTP-3862JD](#) [LTP-2088AKD](#) [LTD-6740P](#) [LTC-4727E](#) [LTS-312AY](#) [LTC-2623E](#) [CC25-12YWA](#) [EADSF056RA1](#) [OPS-S3911LY-GW](#) [LDF-U8004BI](#) [SLCN-42M-G](#) [SLCN-42M-W](#) [LTC-3710G](#) [LTS-4801KF](#) [ACSA04-41QWWA/D](#) [OPS-S5620SB-GW](#) [OSL10396-LW](#) [HCMS-3974](#)