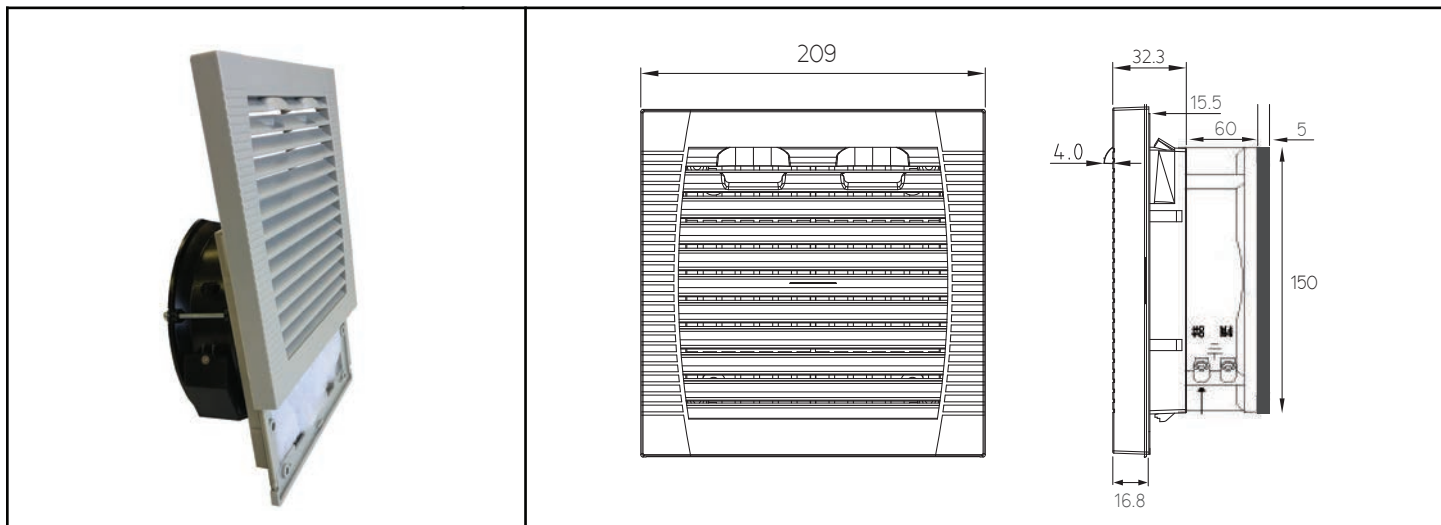


# OA172LFGS XC Series with Slide Guard

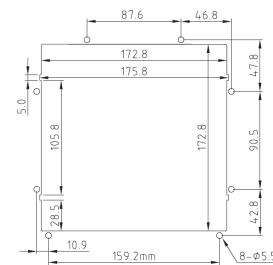


## Louvered Filter Fan Kit with Fan Installed



|                       |   |  |  |
|-----------------------|---|--|--|
| Frame                 | Diecast Aluminum                              | Operating Temperature<br>Ball Bearing<br>-40C ~ +70C<br><br>Life Expectancy<br>>60,000 hours (L10, 40C )<br><br>Environmental:<br>Class B Insulation<br>Rated IP54 Guard<br>Guard Frame: ABS Resin<br>UL94V-0 with UV protection<br>Color: Gray (standard) or Black (special order)<br>Filter Mesh: Nylon fiber<br>Synthetic Resin |  |
| Impeller              | PBT, UL94V-O plastic                          |  |  |
| Connection            | 2x Lead Wires or Terminals                    |  |  |
| Motor                 | Capacitor drive, impedance protected          |  |  |
| Bearing System        | Dual Ball                                     |  |  |
| Insulation Resistance | >100M ohm between leadwire and frame (500VDC) |  |  |
| Dielectric Strength   | 1 min at 1500 VAC, 50/60Hz                    |  |  |

| Model Number         | OA172LFGS111TXC        | OA172LFGS221TXC        |
|----------------------|------------------------|------------------------|
| Nominal Voltage      | 120 VAC                | 230 VAC                |
| Voltage Range        | 100 ~ 125 VAC          | 200 ~ 240 VAC          |
| Rated Power          | 50 W                   | 50 W                   |
| Rated Speed (RPM)    | 3300                   | 3300                   |
| Airflow (CFM)        | 300                    | 300                    |
| Noise Level (dB)     | 61                     | 61                     |
| Max. Static Pressure | 0.78" H <sub>2</sub> O | 0.78" H <sub>2</sub> O |



PANEL CUTOUT

\* Note: Airflow data is for the fan without the louvered filter attached. Calculations indicate that up to a 40% reduction (~ 180 CFM) in fan airflow is possible with LFGS unit installed.

## X-ON Electronics

Largest Supplier of Electrical and Electronic Components

*Click to view similar products for [AC Fans](#) category:*

*Click to view products by [Orion](#) manufacturer:*

Other Similar products are found below :

[G9225S05B2-FSR](#) [A2D200-AA04-41](#) [A2E165-AA17-01](#) [144LS-2282-010](#) [1500-FAN-01](#) [25.001.1856.0](#) [25.350.5253.0](#) [272DL-2LP11-000](#)  
[98XC-0182-000](#) [A2D210-AB10-05](#) [A2E170-AF23-01](#) [F1238S24BT-FSR](#) [23241-3](#) [25.000.1856.0](#) [25.000.2056.0](#) [25.010.1856.0](#)  
[25.345.5353.0](#) [281DY-1LP14-000B](#) [298DM-2LP11-000](#) [298DS-2LP11-000A](#) [344DY-1LP11-000](#) [39.703.0253.0](#) [USTF1203224VHW](#)  
[3915100996-SA3](#) [3G2C7MC224](#) [W2D200-HH04-07](#) [W2S130-AA03-43](#) [W2S130-AA25-97](#) [432703034611](#) [8856N](#) [A4D315-AC20-02](#)  
[W2S130-AB03-09](#) [5900](#) [TAC12025230MT](#) [8550A](#) [8560N](#) [8880A](#) [SF1212AD SL.GN](#) [AD0405HB-G73\(9T\)](#) [W2D200-CA04-52](#) [S4E450-](#)  
[AP01-02](#) [W2S130-AB25-10](#) [A4E330-AB18-09](#) [W2E250-DB05-52](#) [W4E315-CS22-70](#) [S4S250-BA02-20](#) [S2D300-BP02-37](#) [W2S130-AB25-](#)  
[24](#) [W2D250-GA08-08](#) [TAC8025115HW](#)