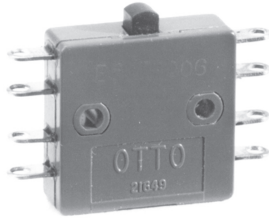
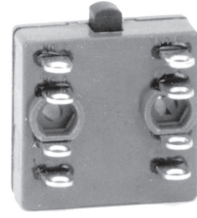


DOUBLE BREAK, SNAP-ACTION, MINIATURE, FRONT OR END TERMINALS



End Terminal Style



Front Terminal Style

Two switches in one case! The B5-7 series basic switches are miniature in size but feature up to 10 amps switching capability of 100,000 cycles.

The molded housing is rugged and structurally stable. The terminals are sealed against solder flux entering the switch and are bright acid tin plate brass for excellent solderability. B5-71 has end terminals; B5-72 has front terminals.

## Features:

- Double pole, 4-circuit
- Up to 10 amps switching capability
- Simultaneity of both poles to within 0.004"
- Button accepts actuation directly from cam
- Choice of end or front terminals
- RoHS/WEEE/Reach compliant

### Standard Characteristics/Ratings:

**ELECTRICAL RATINGS:** See chart below

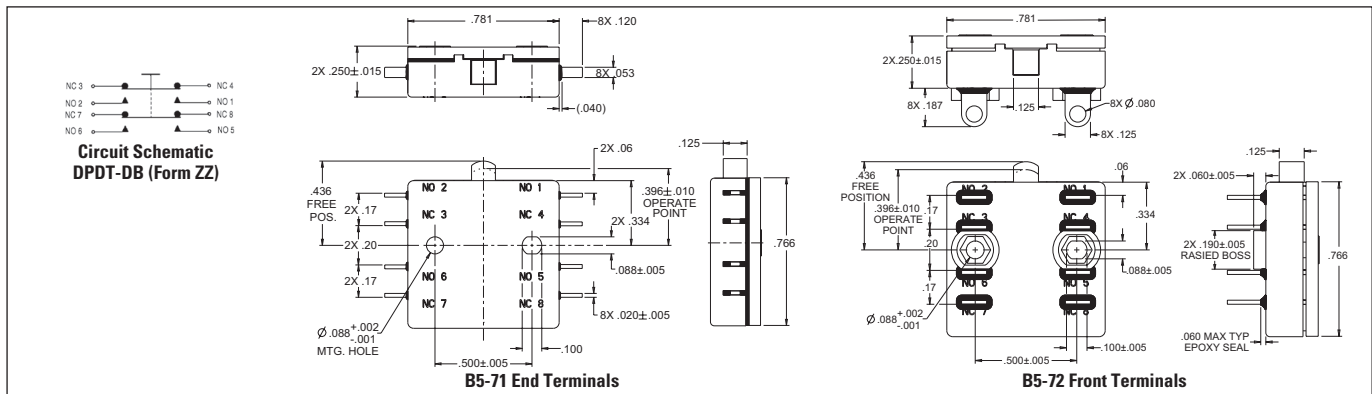
<b>Electrical Life:</b>	50,000 cycles
<b>Mechanical Life:</b>	100,000 cycles
<b>Seal:</b>	Unsealed
<b>Operating Temp Range:</b>	-65°C to +125°C
<b>Operating Force:</b>	12 +/- 4 oz
<b>Release Force:</b>	5 oz min
<b>Operate Point:</b>	0.396 +/- 0.010 inches from mounting holes
<b>Overtravel:</b>	0.012 inches min
<b>Simultaneity:</b>	Within 0.004 inches
<b>Movement Differential:</b>	0.020 +/- 0.010 inches
<b>Pretravel:</b>	0.050 inches max

### MATERIALS:

<b>Case:</b>	Thermoset, blue
<b>Cover:</b>	Thermoset, blue
<b>Button:</b>	Thermoplastic, black
<b>Terminals:</b>	End or front solder type brass with bright acid tin plating
<b>Contacts:</b>	Silver with gold
<b>Terminal Hardware:</b>	None provided
<b>Mounting Hardware:</b>	None provided

Catalog Number	Type of Load	Sea Level @ 28VDC DPST	Sea Level @ 28VDC 4 Circuit	Sea Level @ 115VAC, 60Hz DPST	Sea Level @ 115VAC, 60Hz 4 Circuit	70,000 feet @ 28VDC DPST	70,000 feet @ 28VDC 4 Circuit	Contact Plating Over Silver
B5-71001 & B5-72001	Resistive	10A	10A	7.5A	5A	10A	10A	Gold
B5-71001	Inductive*	7.5A	5A	5A	5A	3.5A	2A	Gold
B5-72001	Inductive	5A	2A	5A	5A	3.5A	2A	Gold
B5-71001 & B5-72001	Lamp	2A	2A	N/A	N/A	N/A	N/A	Gold
B5-71004 & B5-72004	Resistive	5A	5A	N/A	N/A	5A	5A	Gold
B5-71004 & B5-72004	Inductive*	3A	3A	N/A	N/A	3A	3A	Gold
B5-71002 Low Level	Resistive	1A	1A	N/A	N/A	1A	1A	Gold
B5-72002 Low Level	Inductive*	0.5A	0.5A	N/A	N/A	0.5A	0.5A	Gold
Dielectric Withstand:		1000Vrms	1000Vrms	1000Vrms	1000Vrms	400Vrms	400Vrms	

\*L/R = 0.026



## X-ON Electronics

Largest Supplier of Electrical and Electronic Components

*Click to view similar products for [Basic / Snap Action Switches](#) category:*

*Click to view products by [OTTO](#) manufacturer:*

Other Similar products are found below :

[5SM901-S12](#) [5SM9-S12N195](#) [602EN532](#) [602EN535-RB](#) [602HE5-RB1](#) [604HE162](#) [604HE223-6B](#) [624HE17-RB](#) [6HM82](#) [6HM89](#) [6SE1](#)  
[6SX1-H58](#) [70500216](#) [70599106](#) [MBD5B1](#) [MBH2731](#) [73-316-0012](#) [EXD-AR20](#) [79211923](#) [79218589](#) [7AS12](#)  
[MIL30126AB6BBMD4A12XAU](#) [ML-1155](#) [ML-1376](#) [831010C3.0](#) [831090C2.EL](#) [83131904](#) [84212012](#) [8AS239](#) [8HM73-3](#) [8SX26-H33](#)  
[914CE1-6G](#) [PL-100](#) [11SM1077-H4](#) [11SM1077-H58](#) [11SM1-TN107](#) [11SM405](#) [11SM8423-H2](#) [11SX37-T](#) [11SX48-H58](#) [11SM2442-T](#)  
[11SM76-T](#) [11SM77-H58](#) [11SM77-T](#) [11SM863-T](#) [11SM866](#) [A7CN-1M-1-LEFT](#) [A831700C7.0](#) [121EN188-R](#) [1245.0120](#)