

ALTERNATE ACTION RING ILLUMINATED, METAL CASE & BUTTON



High Profile
Curved Button



The LP5-V series is an alternate action switch that has been designed to provide attractive, lighted position indication for applications in harsh environments, where security and reliability are paramount. The series features both aluminum and stainless steel cases watertight to IP68S. UL1500 ignition protected. Momentary action is available in the LP3-V series.

This high reliability switch offers the durability and ruggedness our customers have come to expect with the added benefit of illumination. Ideal for marine, off-highway and industrial control applications that require an illuminated switch.

This switch offers positive tactile feedback, less than 25mΩ contact resistance, and a variety of LED colors available in both flat and domed actuator bezel shapes.

Features:

- Security (aluminum) or vandal resistant (stainless steel) case & button
- Ring illuminated
- Watertight to IP68S
- Less than 25mΩ contact resistance
- Variety of button options and LED colors
- Drop in replacement to the P5-V series
- UL recognized & CSA certified
- RoHS/WEEE/Reach compliant

Standard Characteristics/Ratings:		
ELECTRICAL RATINGS:		
Load	Sea Level @ 28VDC or 115VAC, 60/400Hz	
Resistive	5A	
Inductive	3A	
Lamp	1A	
Motor	3A	
DWV	1000Vrms through switch contacts only	
Logic Level	10-100mA @ 3-28V, max DC	
Electrical Life:	25,000 cycles	
LIGHTING:		
Light Source Voltage (DC)	Actual Voltage Nominal (DC)	Voltage Max (DC)
2	2	2.6
6	7	8
12	13.5	14.5
24	28	28.6
Mechanical Life:	200,000 cycles	
Seal:	IP64 or IP68S	
Operating Temp Range:	-55°C to +85°C	
Operating Force:	3.0 lbs. +1.0/-0.5 lb.	
Total Travel:	0.180 inches max	
Overtravel:	0.012 inches min	
MATERIALS:		
Case:	Stainless steel or anodized aluminum alloy	
Button:	Thermoplastic	
Center Cap:	Stainless steel or aluminum	
Terminals:	Standard and low level options available	
Mounting Hardware:	Hex or knurl nut, lockwasher and panel seal gasket	

LP5-V PART NUMBER CODE

	LP5	-	X	X	X	X	X	X	X				
	Type		Case Style		Circuit Rating		Light Source Type* w/ Rev. Pol Protection		Seal Level	Case/Center Cap Color	Button Profile		
A.	Aluminum	1.	5/8-24 & Hex Nut	0.	Indicator Light	A.	2V Red LED	2.	Dusttight	1.	Silver	1.	High Profile Flat Button
V.	Stainless	2.	5/8-24 & Knurl Nut	1.	SPST/Std.	B.	2V Green LED	3.	Watertight	2.	Black**	2.	High Profile Curved Button
		3.	5/8-24 W/D-Flat & Hex Nut	2.	SPDT/Std.	C.	2V Amber LED					3.	Low Profile Flat Button
		4.	5/8-24 W/D-Flat & Knurl Nut	3.	SPST/Logic Level	D.	6V Red LED					4.	Low Profile Curved Button
		5.	3/4-20 & Hex Nut	4.	SPDT/Logic Level	E.	6V Green LED					5.	Flush Profile Flat Button
		6.	3/4-20 & Knurl Nut			F.	6V Amber LED						
		7.	3/4-20 W/D-Flat & Hex Nut			G.	12V Red LED						
		8.	3/4-20 W/D-Flat & Knurl Nut			H.	12V Green LED						
						J.	12V Amber LED						
						K.	24V Red LED						
						L.	24V Green LED						
						M.	24V Amber LED						
						N.	2V Blue LED						
						P.	6V Blue LED						
						Q.	12V Blue LED						
						R.	24V Blue LED						
						S.	2V Deep Green						
						T.	6V Deep Green						
						U.	12V Deep Green						
						V.	24V Deep Green						

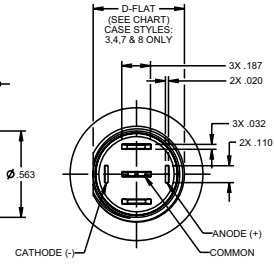
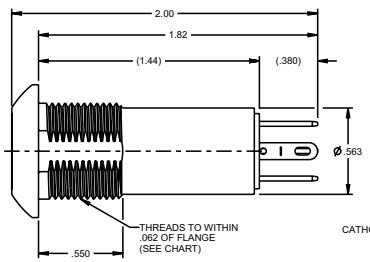
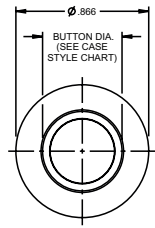
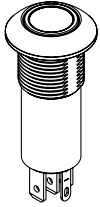
*2V LED's are intended for use with an external resistor. See appendix for complete voltage/ratings table. For additional LED lighting options, contact factory.
** Only available on LP5-A styles.

ILLUMINATED VANDAL RESISTANT PUSHBUTTONS

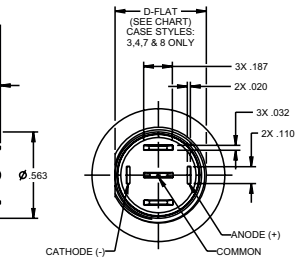
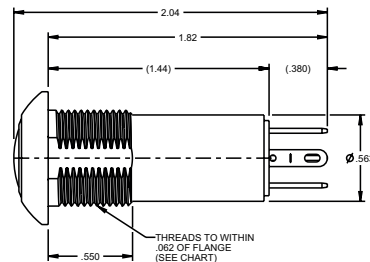
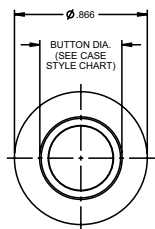
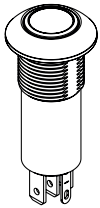
LP5-V
ILLUMINATED
VANDAL RESISTANT
PUSHBUTTONS

ALTERNATE ACTION RING ILLUMINATED, STAINLESS STEEL CASE & BUTTON

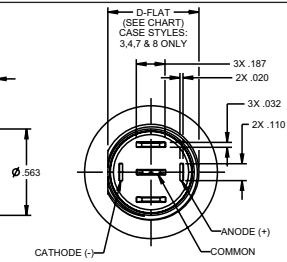
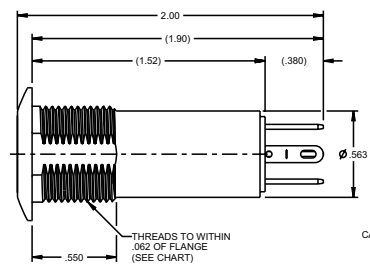
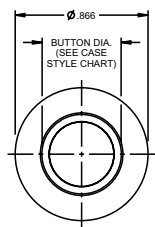
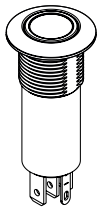
High Profile Flat Button
Button Profile Style 1



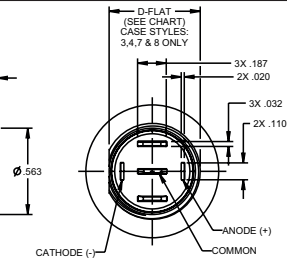
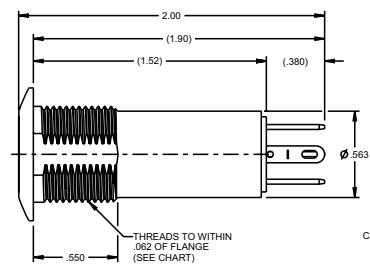
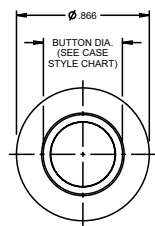
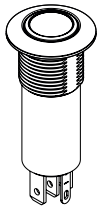
High Profile Curved Button
Button Profile Style 2



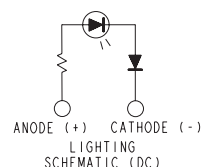
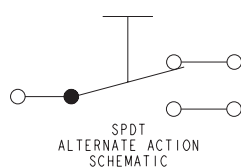
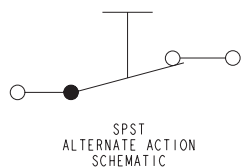
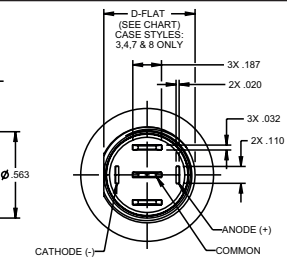
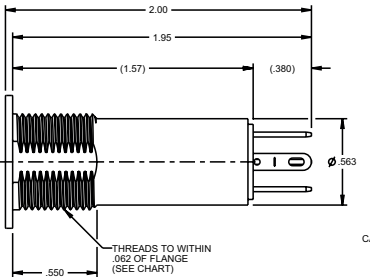
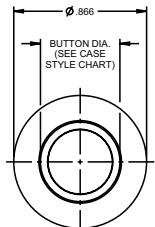
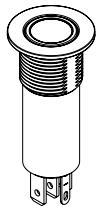
Low Profile Flat Button
Button Profile Style 3



Low Profile Curved Button
Button Profile Style 4



Flush Profile Flat Button
Button Profile Style 5



PUSHBUTTONS

X-ON Electronics

Largest Supplier of Electrical and Electronic Components

Click to view similar products for [Pushbutton Switches](#) category:

Click to view products by [OTTO](#) manufacturer:

Other Similar products are found below :

[8940K2012](#) [LW1L-M1C10V-A](#) [LW1L-M1C70-A](#) [LW2L-A1C20M-GD](#) [LW2L-M1C20M-A](#) [60324L](#) [M22-D-R-GB0/K11](#) [M7E-HRN2](#)
[67021K512](#) [67081K512X](#) [701PB580](#) [7199K101](#) [810K12910](#) [810KSV30B](#) [MML21EA2ADK](#) [MML21KA3ABK](#) [MML23KA3AC05K-001](#)
[MML23KW3AA01W](#) [8418K2](#) [8442K3](#) [8450K1](#) [860K11911T01A](#) [861901](#) [861K11911T01A07](#) [861K13810T00A14](#) [861K13911](#)
[8646AB6X718UL](#) [8646ABUL](#) [9001KXRK](#) [907AYY100](#) [PMHD155A1](#) [9533CD4+U574+U4922](#) [95-414.000](#) [99-450.837](#) [99-453.837](#)
[PV3H2B0NN-341](#) [1203MRA](#) [A22NZBGANGA](#) [A22NZBNANGA](#) [A22NZMPATRA](#) [A2PMA1X03EC56](#) [A3A-5123-02](#) [A3A-7140](#) [A3A-7310](#) [A3A-7340](#) [A3U-TMW-A2C-5M](#) [A595](#) [12037A2ULCSA](#) [ABD122N-B](#) [1211390004](#)