

CHARACTERISTICS

ELECTRICAL:

LIFE: 100,000 CYCLES  
 CIRCUIT: SINGLE POLE, 4 THROW, CENTER OFF  
 MOMENTARY CONTACT (SELF RETURN TO CENTER OFF.)  
 RATING: 1 AMP INDUCTIVE AT 28 VDC 100,000 CYCLES  
 OVERLOAD: 2 AMP INDUCTIVE AT 28 VDC FOR 100 CYCLES  
 DWV: 1050 VRMS

MECHANICAL:

LIFE: 100,000 CYCLES  
 SWITCH ACTION SHALL BE SMOOTH, NO SNAP ACTION  
 LEVER TRAVEL: 15° MAX. FROM CENTER OFF  
 ACTUATING FORCE: 16±6 OZS.

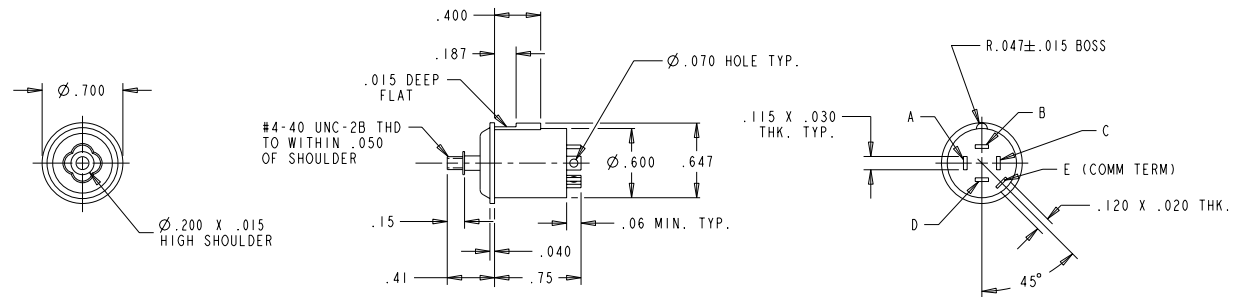
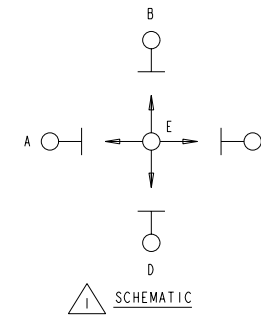
PHYSICAL:

HOUSING: BLACK RYTON  
 BAT HANDLE: STAINLESS STEEL  
 ENCLOSURE: DUSTTIGHT AND MEETS ENVIRONMENTAL  
 TESTING OF MIL-S-9419  
 TEMPERATURE RANGE: -30°C TO +71°C

MARKING: OTTO 21649 T4-0183  
 TERMINAL IDENT.  
 & DATE CODE (YYWW)

T4-0183

LET	OCN #	DATE	APR
A	000657	19 MAR 99	RAS



NOTE:

CONTACT MADE IN OPPOSITE DIRECTION OF LEVER TRAVEL.

UNLESS OTHERWISE SPECIFIED: DIMENSIONS ARE IN INCHES. TOLERANCES: .XX ±.03 .XXX ±.010 ANGLES ±2° DO NOT SCALE	OTTO CONTROLS		PART NAME			
	DIVISION OF OTTO ENGINEERING INC. CARPENTERSVILLE, ILLINOIS USA		#4-40 THREADED HANDLE SWITCH, 4-WAY TOGGLE			
THIRD ANGLE PROJECTION	THIS DOCUMENT IS THE CONFIDENTIAL PROPERTY OF OTTO ENGINEERING, INC. IT IS PROVIDED ON A RESTRICTED BASIS AND IS NOT TO BE USED IN ANY WAY DETRIMENTAL TO THE INTERESTS OF OTTO ENGINEERING, INC..	DRWN. RAS	SIZE B	FSCM NO 21649	DRAWING NO. T4-0183	REV. A
		CHKD. TP				
		APPD. ASC				
		DATE 19 MAR 99	WT.		SCALE 1:1	SHEET 1 OF 1

## X-ON Electronics

Largest Supplier of Electrical and Electronic Components

*Click to view similar products for [Multi-Directional Switches](#) category:*

*Click to view products by [OTTO](#) manufacturer:*

Other Similar products are found below :

[MJTP1109AL](#) [RA3CSH6A](#) [APTCFVTR](#) [SRBE210100](#) [T5-NH1118](#) [RKJXW1014002](#) [RKJXW2014001](#) [TSWA-3N-CUP2-LFS](#) [3J2015-200](#)  
[T2-0018](#) [T5-CK2212](#) [CS41001E](#) [RKJXK122000D](#) [RKJXK122400Y](#) [RKJXL100401V](#) [RKJXM2E13001](#) [RKJXM2E13004](#) [RKJXS1004001](#)  
[RKJXT1F42001](#) [RKJXV1224005](#) [RKJXY100000A](#) [SKRHAAE010](#) [SKRHABE010](#) [SKRHACE010](#) [SKRHADE010](#) [SLLB120100](#)  
[SLLB120200](#) [SLLB120300](#) [SLLB510100](#) [SLLB510200](#) [SLLB520100](#) [SRBE110301](#) [SRBE210200](#) [AMPTFP2VTR](#) [D16202](#) [PHAP4383V](#)  
[3302](#) [7G5002C0003](#) [QSA2S3.5NH3G7](#) [K1-1508SA-03](#) [PLJG2-G-V-T/R](#) [PLMG5-GH-V-T/R](#) [RKJXU1210006](#) [SKRHADE011](#) [T4-0010](#)  
[2200-000301](#) [5D001-BKKKKKAWXWXWXWX-W200](#) [RKJXM1015004](#) [RKJXV1220001](#) [SLLB310300](#)