

Product data					
Product code	VG03-0053	STK-code	1914358	EAN-code	6430051860324
Product name	OJL-connector 135 Blue		ETIM class	EC000276	
Wires	IN 1x(Al/Cu) 2,5-35 mm ² / 1x (Al/Cu) 2,5-10 mm ² OUT: 4x (Cu) 2,5-16mm ² / 2x (Cu) 2,5-10 mm ²				

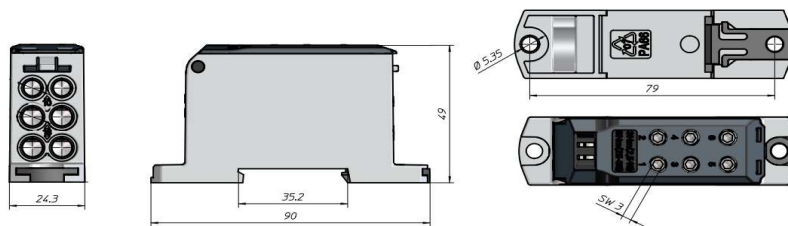
Technical data				
Nominal current (IEC)	Cu	135	A	
	Al	120	A	
Nominal voltage (IEC)		1000	V	
		-		
		-		
Number of poles		1	pcs	
Max. Cross section		35	mm ²	
Tightening torque		-		
	2,5-16 mm ² (M6)	3	Nm	
	25-35 mm ² (M8)	6	Nm	
		-		
		-		
Input	1x Al/Cu 2,5-35 mm², 1x Al/Cu 2,5-10 mm²			
Output	4x Cu 2,5-16 mm², 2x Cu 2,5-10 mm²			
		-		
Operating temperature		80	°C	
Weight		75	g	
IP-protection		IP20		
Standards	EN 61238-1:2003; EN 60947-7-1:2009			
Color / Material	Blue Cover PC, Grey Housing RAL 7035 PA66/V0, Connector part tin plated aluminium			
Mounting / Connection	Din rail and 2x screw (M5)			



Description

The single pole distribution block for branching connection. Distribution block with 2 inputs and it will distribute the current through 6 output cables. Connector is made from tin plated aluminium and housing is PA66 V0.

Drawing



Package					
Package	Box	Pcs / Package	20	Weight [kg]	1,50
Length [mm]	300	Width [mm]	205	Height [mm]	100

Ouneva Oy
Teollisuustie 21
FI-82730 Tuupovaara
Finland

Tel. +358 400 179 750
info@ouneva.fi

www.ounevagroup.fi
www.ounevaproducs.fi

X-ON Electronics

Largest Supplier of Electrical and Electronic Components

Click to view similar products for [DIN Rail Terminal Blocks](#) category:

Click to view products by [Ouneva](#) manufacturer:

Other Similar products are found below :

[00110420202](#) [8WA1011-1BH23](#) [9123140000](#) [RBO 5-T-B-HEX](#) [HSL-TB64-DIN](#) [90.070](#) [90.202](#) [912314](#) [260-301_NR](#) [280-560](#) [280-564](#)
[281-611/281-542](#) [281-673/281-411](#) [281-994](#) [283-317](#) [283-607](#) [264-724](#) [264-726](#) [280-530](#) [280-555](#) [280-619](#) [281-610](#) [281-622/281-417](#) [284-](#)
[317](#) [2907033](#) [35956](#) [USK 10](#) [102510](#) [5520682](#) [EMH 25-ZE30](#) [1SNK705210R0000](#) [1SNK705151R0000](#) [1SNK705020R0000](#)
[1SNK506066R0000](#) [1SNK506061R0000](#) [1SNK506012R0000](#) [1SNK505060R0000](#) [UM 45-SEFE M.NUT BK](#) [1SNK506013R0000](#)
[1SNK506030R0000](#) [1SNK506062R0000](#) [1SNK506065R0000](#) [1SNK508062R0000](#) [1SNK508065R0000](#) [1SNK508066R0000](#)
[1SNK705010R0000](#) [1SNK705012R0000](#) [1SNK705150R0000](#) [1SNK705152R0000](#) [1SNK705310R0000](#)