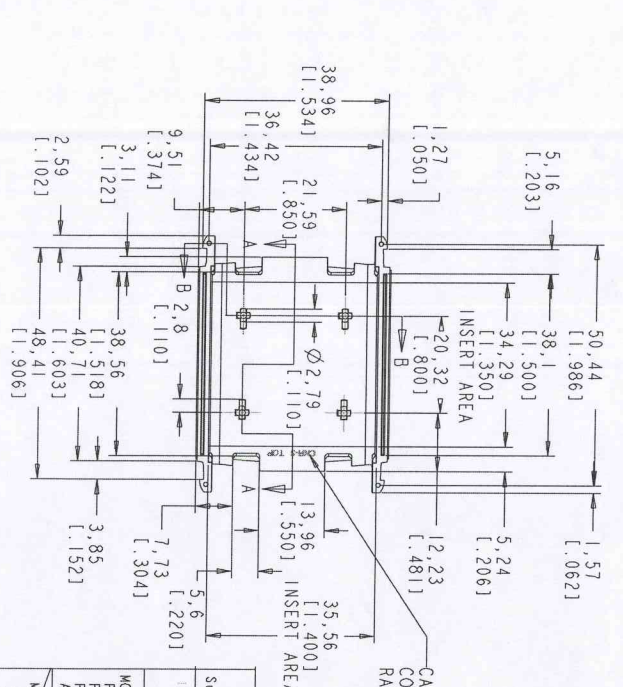
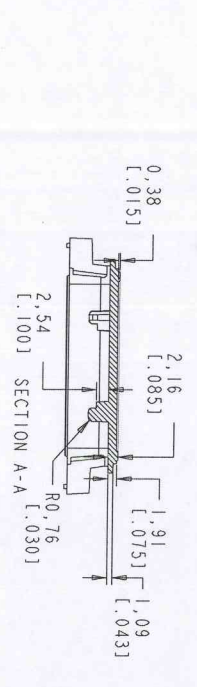
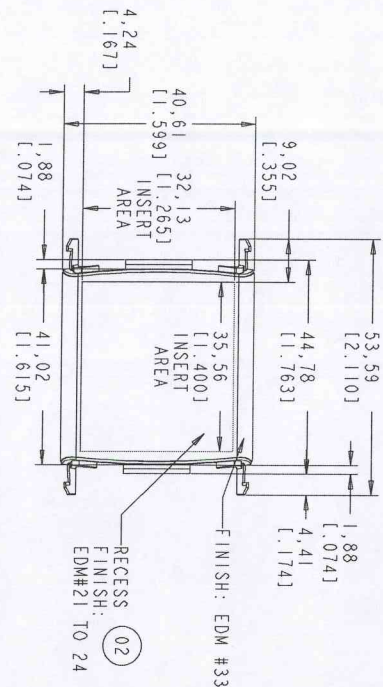


REVISIONS				
LET	ECN	DESCRIPTION	DATE	INT
01		INITIAL RELEASE	04-08-12	JANVES
02		CHANGED RECESS TEXTURE TO EDM, ADDED CAVITY ID	05-21-12	JMM



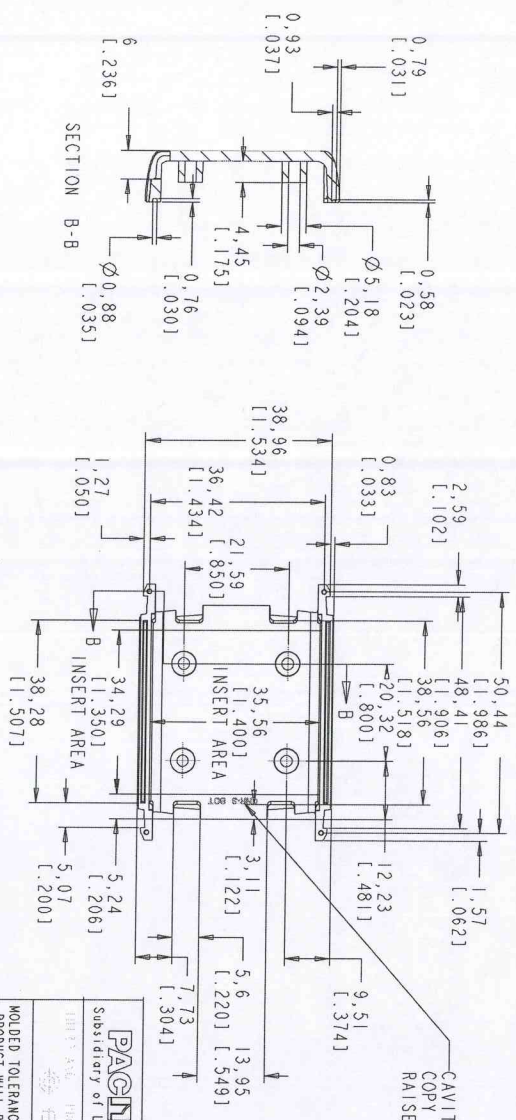
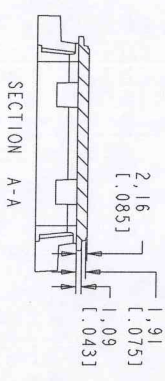
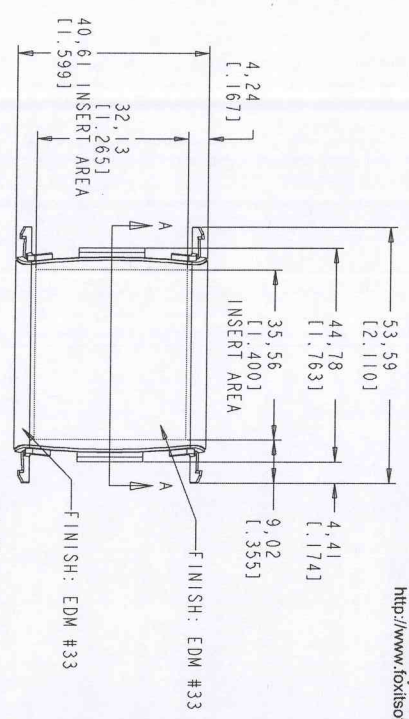
NOTES:

- FOR LIST OF MATERIAL SEE: PL 115126-501
- UNLESS OTHERWISE SPECIFIED: CORNERS SHOWN SHARP HAVE A RADIUS OF .01.
- NO KNOCKOUTS, GATES OR FLASH ON THE EXTERIOR SURFACES.
- FLASH PERMISSIBLE WITHIN .005 INCH.
- KNOCKOUTS FLUSH TO .005 BELOW SURFACE.
- TEXTURE: EDM #33
- LABEL RECESS EDM#21 TO 24
- INTERIOR FINISH: SPI C3 OR BETTER

**PACNITEG**  
 Subsidiary of LaFrance Corp.  
 One LaFrance way, Concordville, Pa. 19332-5002 U.S.A.

THE PACNITEG PRODUCT LINE	NAME	DATE	CNR-S TOP COVER 11515-01
WOUND TOLERANCE: PRODUCT WILL BE PRODUCED PRODUCT SPEC INST TOTE AND TOLERANCE	DRAWN: Janves	04-08-12	
MACHINED: ANGLES: ±1/2° DECIMALS: .02 XXX ±0.04	CHECK: Ted	04-08-12	
MATERIAL:		APPROVE:	PROCESS:
COLOR: SEE PARTS LIST			PART #
CLASS:			DRAWING NUMBER
			115115-01
			REV
			02

REVISIONS		DATE	INT
01	INITIAL RELEASE	04-08-12	Janves
02	ADDED CAVITY ID	05-22-12	JMM



CAVITY ID:  
 COPY 1.25 TALL  
 RAISED 0.05 TO 0.1  
 (02)

NOTES:

- FOR LIST OF MATERIAL SEE:  
PL 115126-501
- UNLESS OTHERWISE SPECIFIED:  
CORNERS SHOWN SHARP HAVE  
A RADIUS OF .01.
- NO KNOCKOUTS, GATES OR FLASH  
ON THE EXTERIOR SURFACES.
- FLASH PERMISSIBLE WITHIN .005 INCH.
- KNOCKOUTS FLUSH TO .005 BELOW SURFACE.
- TEXTURE: EDM #33
- INTERIOR FINISH: SPI C3 OR BETTER

**PACNITEC**  
 Subsidiary of LaFrance Corp.

One LaFrance way, Concordville, Pa. 19332-5002 U.S.A.

NAME	DATE
Janves	04-08-12

DRAWN: Janves  
 CHECK: Ted  
 APPROVE: JMM

MATERIAL: ABS  
 COLOR: SEE PARTS LIST  
 CLASS:

PROCESS: INJ MOLDED  
 PART # 115115-02  
 SCALE: 1:1  
 DRAWING NUMBER 115115-02  
 REV 02

**CNR-S**  
**BOTTOM COVER**

## X-ON Electronics

Largest Supplier of Electrical and Electronic Components

*Click to view similar products for* [Enclosures, Boxes & Cases](#) *category:*

*Click to view products by* [PacTec](#) *manufacturer:*

Other Similar products are found below :

[585-R-WH-PK](#) [M-10-PLATED](#) [60221-01](#) [60566-01-000](#) [HPL-9VB BATT DOOR](#) [M18-PLTD](#) [M-21-PLATED](#) [63310-01-000](#) [6711GSKT](#)  
[71884-29-028](#) [LH45-100 Black](#) [72868-510-000](#) [CNS-0000 Black](#) [72883-510-000](#) [CNS-0101 Black](#) [72906-510-000](#) [CNS-0407 Black](#) [73092-](#)  
[510-000](#) [CNM-0101 Black](#) [73105-510-000](#) [CNL-0101 Black](#) [73108-510-000](#) [CNL-0303 Black](#) [73395-510-039](#) [CNS-0006 Bone](#) [74257-510-000](#)  
[CNL-0004](#) [MDC-1183-PLAIN-ALUM](#) [MDC-1183-PTD](#) [MDC-13104-PTD](#) [MDC-321-PTD](#) [MDC-973-PTD](#) [76](#) [77153-01-028](#) [FLX6030](#)  
[83535-01-508](#) [90026-501-000](#) [PS36-200](#) [116-508](#) [120-407](#) [120-910](#) [127-908](#) [130-008](#) [1301170079](#) [1322GSKTEP](#) [1325GSKT3](#) [138-PLAIN](#)  
[1434-1210](#) [EAS-500 \(BLACK ANO\)](#) [1804RP-RB-PK](#) [190-005](#) [2202307](#) [KAB3321 BLACK](#) [KAB3421](#) [2697466](#) [S52213](#) [2901123](#) [2901699](#)  
[A0645271](#) [A20P20](#) [2106-IR](#)