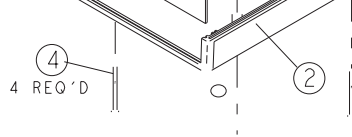


MODEL LH57-130



MODEL LH57-200

FOR ENGINEERING DRAWING SEE SIDE 2

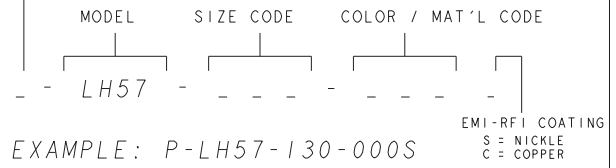
*SUPPLIED WITH KIT ONLY

| MODEL | ① TOP COVER | ② BOTTOM COVER | * ③ PANEL BLANK | ④ SCREW | ⑤ FEET |
|----------|----------------|-------------------|--------------------|------------|-----------|
| LH57-130 | 73459-01 | 73460-01 | 71884-16 | 60227-16 | 60221-01 |
| LH57-200 | 73459-01 | 73461-01 | 71884-17 | 60227-09 | 60221-01 |

73463-00 REV C 4/98

MODEL NUMBER GENERATION

K = KIT
P = PRODUCTION

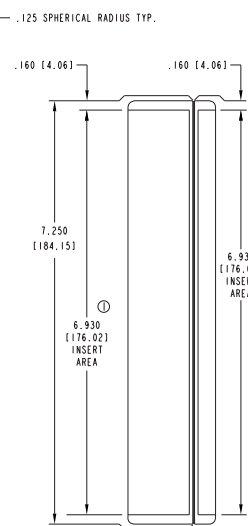
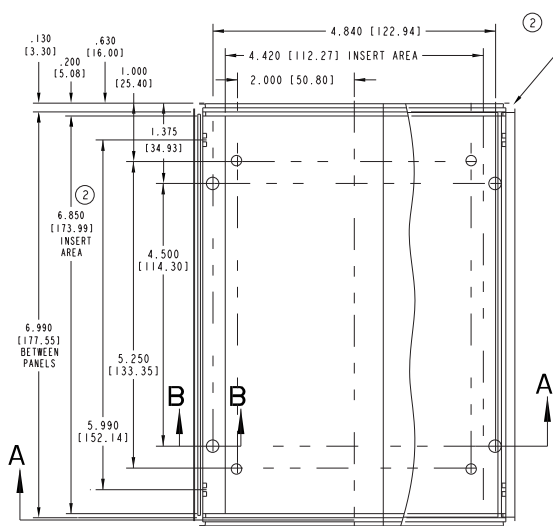


| COLOR / MAT'L | 94H |
|---------------|-----|
| BLACK | 000 |
| *GREY | 00 |
| *TAN | 002 |
| P.C. BONE | 039 |

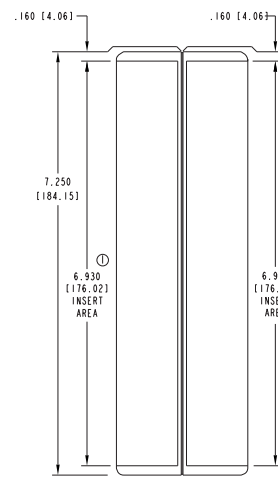
*SEE FACTORY FOR

PACIFIC

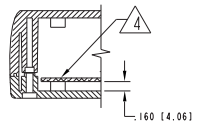
LH57-130 & L
1-610-



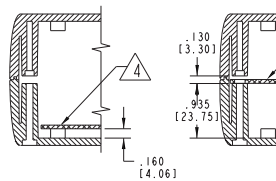
LH57-130



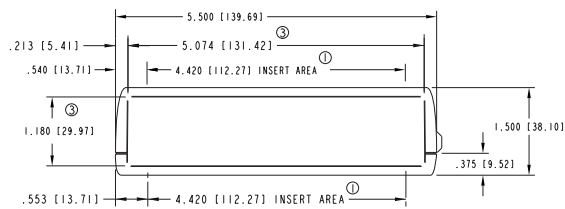
LH57-200



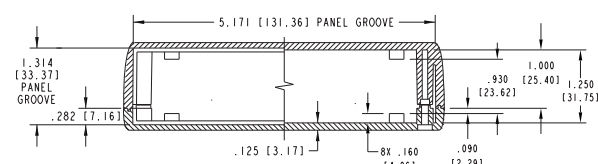
LH57-130
SECTION B-B



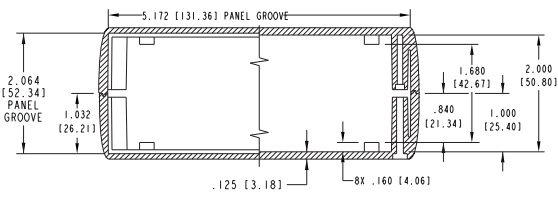
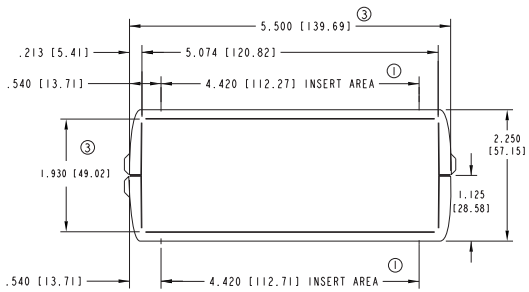
LH57-200
SECTION B-B



SECTION A-A
LH57-130



SECTION A-A
LH57-200



NOTES:

PANEL SIZE: (FRONT AND REAR)

LH57-130 1.307 ± .005 [30.20 ± 0.13] HIGH
± .005 [131.32 ± 0.13] WIDED
[1.57 ± 0.13] THICK. (IN PANEL GROOVE)

LH57-200 2.057 ± .005 [52.25 ± 0.13] HIGH
± .005 [131.32 ± 0.13] WIDED
± 0.13] THICK. (IN PANEL GROOVE)

① EXTERIOR INSERT AREA, FOR IN MOLD MOUNTING

② INTERIOR INSERT AREA, FOR IN MOLD MOUNTING
TYPICAL ON TOP AND BOTTOM COVERS.

③ USABLE PANEL AREA.

△4 P.C. CARD .062 [1.57] THICK.

△5 P.C. CARD .062 [1.57] THICK.

PACIFIC

LH57-130 & L
1-610-

73463-00 REV C 4/98

X-ON Electronics

Largest Supplier of Electrical and Electronic Components

Click to view similar products for [Enclosures, Boxes & Cases](#) *category:*

Click to view products by [PacTec](#) *manufacturer:*

Other Similar products are found below :

[585-R-WH-PK](#) [M-10-PLATED](#) [60221-01](#) [60566-01-000](#) [HPL-9VB BATT DOOR](#) [M18-PLTD](#) [M-21-PLATED](#) [63310-01-000](#) [6711GSKT](#)
[71884-29-028](#) [LH45-100 Black](#) [72868-510-000](#) [CNS-0000 Black](#) [72883-510-000](#) [CNS-0101 Black](#) [72906-510-000](#) [CNS-0407 Black](#) [73092-](#)
[510-000](#) [CNM-0101 Black](#) [73105-510-000](#) [CNL-0101 Black](#) [73108-510-000](#) [CNL-0303 Black](#) [73395-510-039](#) [CNS-0006 Bone](#) [74257-510-000](#)
[CNL-0004](#) [MDC-1183-PLAIN-ALUM](#) [MDC-1183-PTD](#) [MDC-13104-PTD](#) [MDC-321-PTD](#) [MDC-973-PTD](#) [76](#) [77153-01-028](#) [FLX6030](#)
[83535-01-508](#) [90026-501-000](#) [PS36-200](#) [116-508](#) [120-407](#) [120-910](#) [127-908](#) [130-008](#) [1301170079](#) [1322GSKTEP](#) [1325GSKT3](#) [1434-1210](#)
[EAS-500 \(BLACK ANO\)](#) [1804RP-RB-PK](#) [190-005](#) [2202307](#) [KAB3321 BLACK](#) [KAB3421](#) [2697466](#) [S52213](#) [2901123](#) [2901699](#) [A0645271](#)
[A20P20](#) [2106-IR](#) [PERF-850-PLN](#)