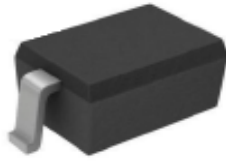


SOD-323



Marking: B5817WS: SJ
B5819WS: SL

Features

- High Current Capability
- Low Forward Voltage Drop
- Halogen free and RoHS compliant

Mechanical Data

- SOD-323 Small Outline Plastic Package
- Polarity: Color band denotes cathode end
- Epoxy UL: 94V-0
- Mounting Position: Any

Maximum Ratings & Thermal Characteristics

(Ratings at 25°C ambient temperature unless otherwise specified.)

Parameters	Symbol	B5817WS	B5819WS	Unit
Maximum repetitive peak reverse voltage	VRRM	20	40	V
Maximum RMS voltage	VRMS	14	28	V
Maximum DC blocking voltage	VDC	20	40	V
Maximum average forward rectified current	IFM	1.0		A
Peak forward surge current 8.3 ms single half sine-wave	IFSM	9		A
Typical thermal resistance	RθJA	250		°C/W
Power Dissipation	PD	500		mW
Storage temperature range	TSTG	-50-+150		°C

Electrical Characteristics

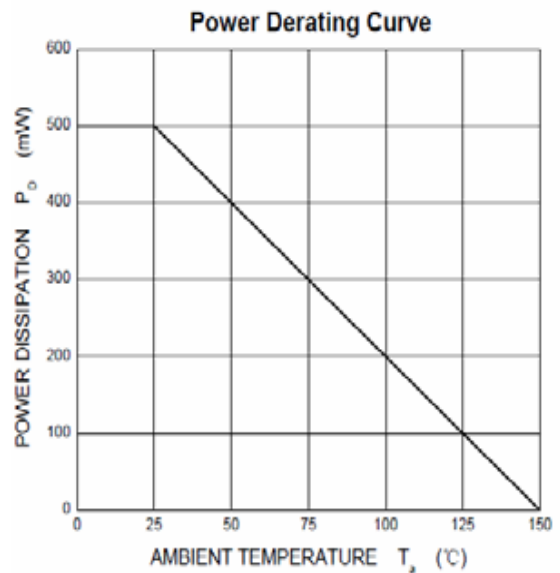
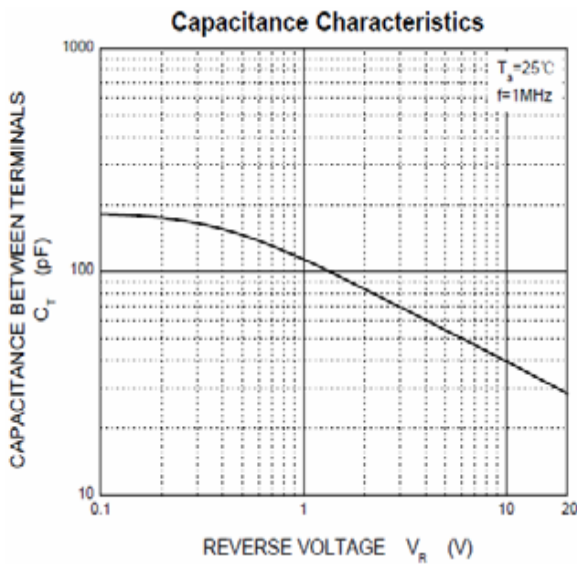
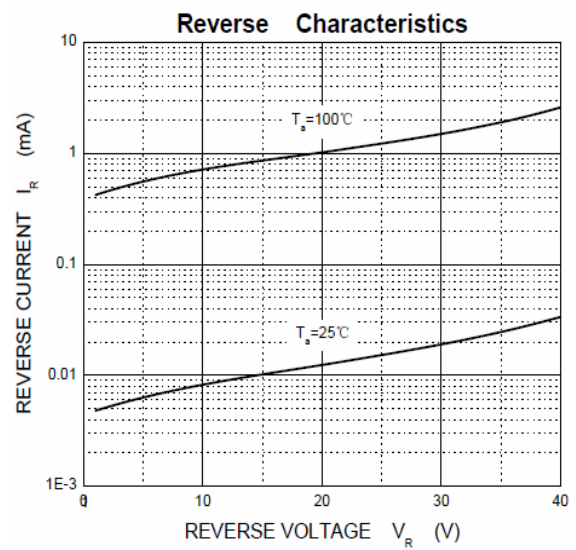
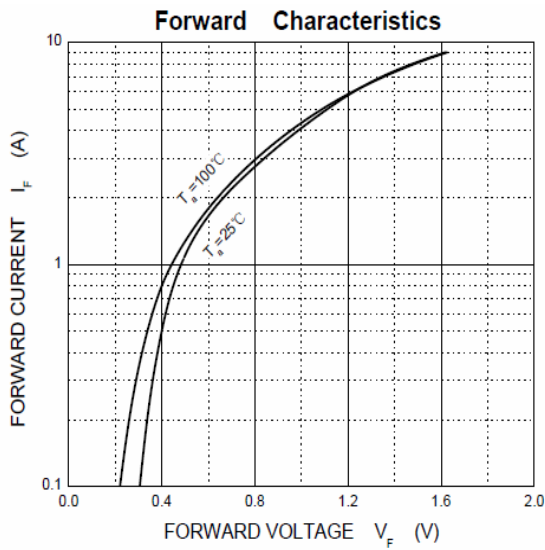
(Ratings at 25°C ambient temperature unless otherwise specified.)

Parameters	Symbol	Test conditions	B5817WS	B5819WS	Unit
Maximum forward voltage	VF	IF = 1.0A IF = 3.0A	0.450 0.750	0.600 0.900	V
Maximum reverse breakdown voltage	VR	IR=1mA	20	40	V
Maximum reverse current	IR	VR=20V B5817WS VR=40V B5819WS	1.0		mA
Type junction capacitance	Cj	VR = 4.0V, f = 1MHz	120		pF

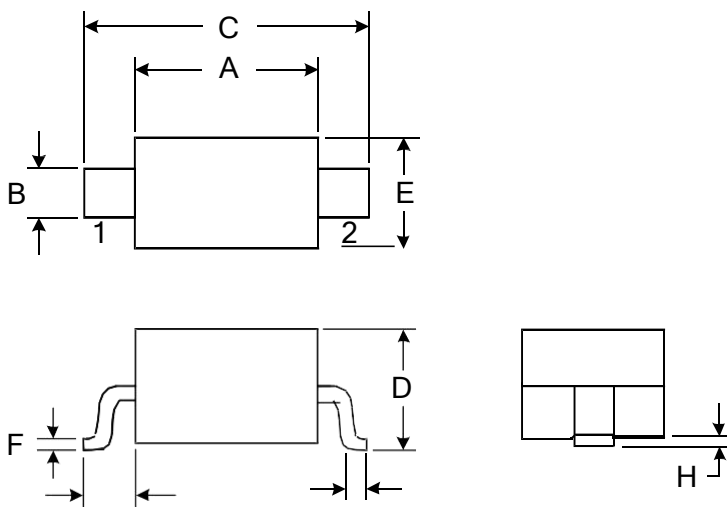
Summary of Packing Options

Package	Packing Description	Packing Quantity	Industry Standard
SOD-323	Tape/Reel,7" reel	3000	EIA-481-1

Ratings and Characteristic Curves



Package Outline Dimensions: SOD-323



DIMENSIONS				
SYMBOL	MILLIMETER		INCHES	
	MIN	MAX	MIN	MAX
A	1.600	1.800	0.063	0.071
B	0.250	0.350	0.010	0.014
C	2.500	2.700	0.098	0.106
D		1.000		0.039
E	1.200	1.400	0.047	0.055
F	0.080	0.150	0.003	0.006
L	0.500 REF		0.020REF	
L1	0.250	0.400	0.010	0.016
H	0.000	0.100	0.000	0.004

X-ON Electronics

Largest Supplier of Electrical and Electronic Components

Click to view similar products for [Schottky Diodes & Rectifiers](#) category:

Click to view products by [PAKER Microelectronics](#) manufacturer:

Other Similar products are found below :

[MA4E2039](#) [MA4E2508M-1112](#) [MBR1545CT](#) [MMBD301M3T5G](#) [RB160M-50TR](#) [D83C](#) [BAS16E6433HTMA1](#) [BAT 54-02LRH E6327](#)
[NRVBAF360T3G](#) [NSR05F40QNXT5G](#) [NTE555](#) [JANS1N6640](#) [SK310-T](#) [SS3003CH-TL-E](#) [GA01SHT18](#) [CRS10I30A\(TE85L,QM](#)
[MA4E2501L-1290](#) [MBRA140TRPBF](#) [MBRB30H30CT-1G](#) [BAT 15-04R E6152](#) [JANTX1N5712-1](#) [DMJ3940-000](#) [SB007-03C-TB-E](#)
[SK33B-TP](#) [NRVBB20100CTT4G](#) [NRVBM120LT1G](#) [NTSB30U100CT-1G](#) [VS-6CWQ10FNHM3](#) [CRG04\(T5L,TEMQ\)](#) [ACDBA1100LR-HF](#)
[ACDBA1200-HF](#) [ACDBA240-HF](#) [ACDBA3100-HF](#) [CDBQC0530L-HF](#) [CDBQC0240LR-HF](#) [ACDBA260LR-HF](#) [ACDBA1100-HF](#)
[MA4E2502L-1246](#) [10BQ015-M3/5BT](#) [NRVBM120ET1G](#) [CRS08TE85LQM](#) [PMAD1108-LF](#) [B120Q-13-F](#) [1N5819T-G](#) [B0530WSQ-7-F](#)
[PDS1040Q-13](#) [B160BQ-13-F](#) [SDM05U20CSP-7](#) [B140S1F-7](#) [HSM560Je3/TR13](#)