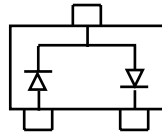
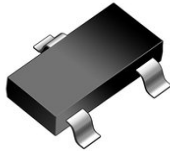
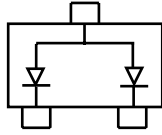
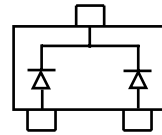


SOT-23


BAV99 Marking: A7



BAW56 Marking: A1



BAV70 Marking: A4

Features

Fast Switching Speed
 For general purpose switching applications
 High Conductance
 Epitaxial planar die construction
 Halogen free and RoHS compliant

Mechanical Data

SOT-23 Small Outline Plastic Package
 EpoxyUL:94V-0

Summary of Packing Options

| Package | Packing Description | Packing Quantity | Industry Standard |
|---------|---------------------|------------------|-------------------|
| SOT-23 | Tape/Reel,7" reel | 3000 | EIA-481-1 |

Maximum Ratings & Thermal Characteristics

(Ratings at 25°C ambient temperature unless otherwise specified.)

| Parameter | Symbol | Limits | Unit |
|--|-----------------|---------|------|
| Reverse voltage | V_R | 70 | V |
| Forward Current | I_F | 200 | mA |
| Peak Forward Surge Current | $I_{FM(surge)}$ | 500 | mA |
| Power Dissipation | P_D | 225 | mW |
| Thermal Resistance Junction to Ambient Air | $R_{\theta JA}$ | 556 | °C/W |
| Junction temperature | T_J | 150 | °C |
| Storage temperature range | T_{STG} | -55-150 | °C |

Electrical Characteristics

(Ratings at 25°C ambient temperature unless otherwise specified).

| Parameter | Symbol | Min. | Typ. | Max. | Unit | Conditions |
|-------------------------------|----------|------|------|-------|---------|---|
| Reverse Breakdown Voltage | V_R | 70 | | | V | $I_R=100\mu A$ |
| Forward voltage | V_{F1} | | | 0.715 | V | $I_F=1mA$ |
| | V_{F2} | | | 0.855 | V | $I_F=10mA$ |
| | V_{F3} | | | 1 | V | $I_F=50mA$ |
| | V_{F4} | | | 1.25 | V | $I_F=150mA$ |
| Reverse current | I_R | | | 2.5 | μA | $V_R=70V$ |
| Capacitance between terminals | C_T | | | 1.5 | pF | $V_R=0, f=1MHz$ |
| Reverse recovery time | t_{rr} | | | 6 | ns | $I_F = I_R = 10mA,$ $I_{rr} = 0.1 \times I_R, R_L = 100\Omega$ |

Ratings and Characteristic Curves

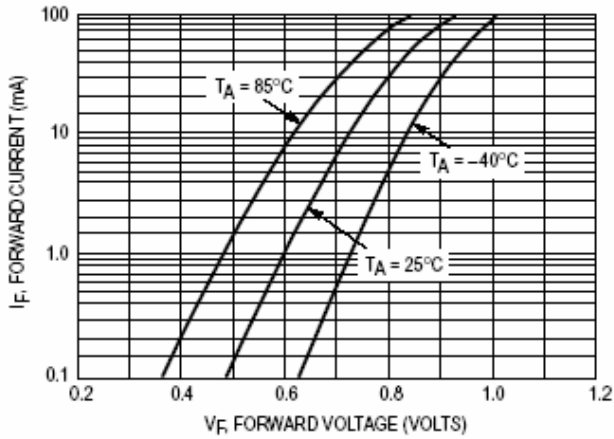


Figure 1 Forward Voltage

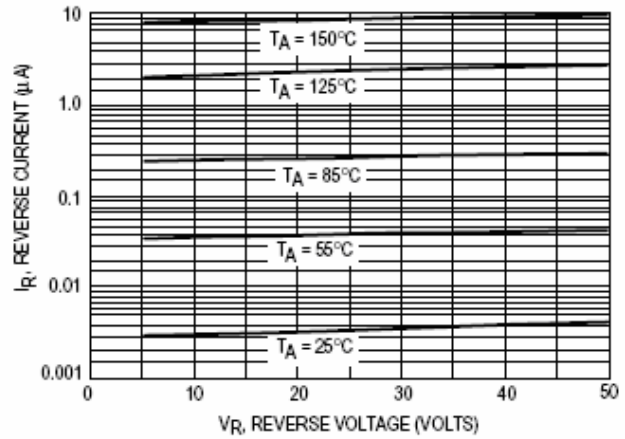


Figure 2 Leakage Current

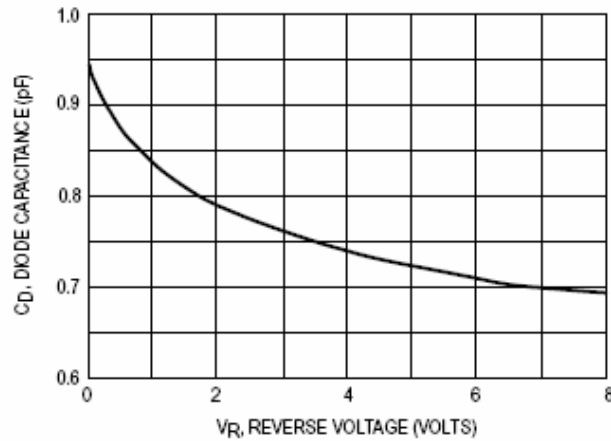
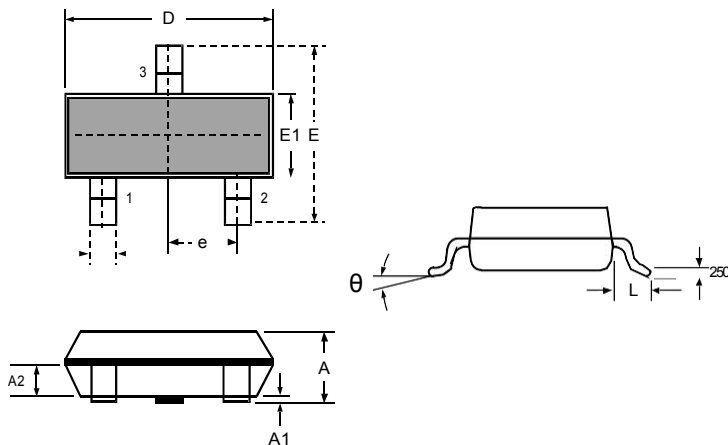


Figure 3 Capacitance

Package Outline Dimensions: SOT-23



DIMENSIONS

| SYMBOL | MILLIMETER | | INCHES | |
|--------|------------|-------|-----------|-------|
| | MIN | MAX | MIN | MAX |
| A | 0.900 | 1.150 | 0.035 | 0.045 |
| A1 | 0.000 | 0.100 | 0.000 | 0.004 |
| A2 | 0.900 | 1.050 | 0.035 | 0.041 |
| D | 2.800 | 3.000 | 0.110 | 0.118 |
| b | 0.300 | 0.500 | 0.012 | 0.020 |
| E | 2.250 | 2.550 | 0.089 | 0.100 |
| E1 | 1.200 | 1.400 | 0.047 | 0.055 |
| e | 0.950 BSC | | 0.037 BSC | |
| L | 0.300 | 0.500 | 0.012 | 0.020 |
| θ | 0 | 8° | 0 | 8° |

X-ON Electronics

Largest Supplier of Electrical and Electronic Components

Click to view similar products for [Diodes - General Purpose, Power, Switching category:](#)

Click to view products by [PAKER Microelectronics manufacturer:](#)

Other Similar products are found below :

[MCL4151-TR3](#) [MMBD3004S-13-F](#) [RD0306T-H](#) [1N3611](#) [NTE156A](#) [NTE574](#) [NTE6244](#) [1SS193,LF](#) [1SS400CST2RA](#) [SDAA13](#)
[SHN2D02FUTW1T1G](#) [LS4151GS08](#) [1N4449](#) [1N456A](#) [1N4934-E3/73](#) [1N914BTR](#) [D291S45T](#) [BAV300-TR](#) [BAW56DWQ-7-F](#) [BAW75-](#)
[TAP](#) [MM230L-CAA](#) [IDW40E65D1](#) [JAN1N3600](#) [JAN1N4454UR-1](#) [LL4151-GS18](#) [SMMSD4148T3G](#) [BYW95B/A52A](#) [NSVDAN222T1G](#)
[CDSZC01100-HF](#) [LL4150-M-08](#) [1N4454-TR](#) [BAV70HDW-7](#) [BAS28-7](#) [JANTX1N6640](#) [BAW56HDW-13](#) [BAS28 TR](#) [VS-](#)
[HFA04SD60STR-M3](#) [NSVM1MA152WKT1G](#) [1SS388-TP](#) [RGP30D-E3/73](#) [VS-8EWF02S-M3](#) [BAV99TQ-13-F](#) [BAV99HDW-13](#)
[MMDB30-E28X](#) [IDP20C65D2XKSA1](#) [LS4148](#) [IDV15E65D2](#) [NSVM1MA152WAT1G](#) [HN4D02JU\(TE85L,F\)](#) [MMD820-C12](#)