



SIP-1A24 REED RELAY

PAN CHANG

Parameter	Min	Nom	Max	Unit
Switching Voltage			100	Volts
Switching current			0.5	Amps
Carry current			1	Amps
Switching frequency			500	Hz
Contact resistance			150	mΩ

(See detailed specifications for more information.)

SPECIFICATIONS

Dry Reed Relay Specifications

All parameters at 20°C unless otherwise stated.

Operate voltage, release voltage, and coil resistance will vary by approximately 0.4%/°C as ambient temperature varies.

PARAMETER	CONDITIONS	MIN	Nom	MAX	UNITS
Contact Ratings					
Switching Voltage (开关电压)	Max DC/PeakAC Resistive	-	-	100	Volts
Switching Current (开关电流)	Max DC/PeakAC Resistive	-	-	0.5	Amps
Carry Current (负载电流)	Max DC/PeakAC Resistive	-	-	1	Amps
Contact Rating (额定容量)	Max DC/PeakAC Resistive	-	-	10	Watts
Life Expectancy (寿命)	Signal Level 12V 10mA	-	200	-	x10 ⁶ Ops
Static Contact Resistance (动态电阻)	Rated Loads	-	120	150	mΩ
	50mV,10mA	-	-	-	-
Relay Specifications					
Insulation Resistance (绝缘电阻)	Between all isolated pins At 100V,20°C,40%RH	10 ¹⁰	-	-	Ω
Capacitance (电容量)	Across Open Contacts	-	-	1	pF
Open Contact to Coil (耐压)		-	-	2	pF
Dielectric Strength	Between Contacts	250	-	-	VDC/Peak AC
	Contacts to Coil	1400	-	-	VDC/Peak AC
Operate Time (动作时间)	At Nominal Coil Voltage	-	0.3	0.5	ms
Including bounce	10Hz Square Wave	-	-	-	-
Release Time		-	0.3	0.5	-
Environmental Ratings (环境温度)					
Storage Temperature	T	-40	-	+105	°C
Operating Temperature	T	-40	-	+85	°C
Soldering Temperature	Applied to pins,10 sec.max.	-	-	+260	°C
Vibration Resistance (振动)	20g,10Hz-2000Hz	-	-	20	Gs
(Survival)		-	-	-	-
Shock Resistance (冲击)	100g,11+/-ms,1/2 Sine Wave	-	-	-	-
(Survival)		-	-	-	-
Weight		-	1.6	-	grams



PAN CHANG

SIP-1A24 REED RELAY

COIL SPECIFICATIONS

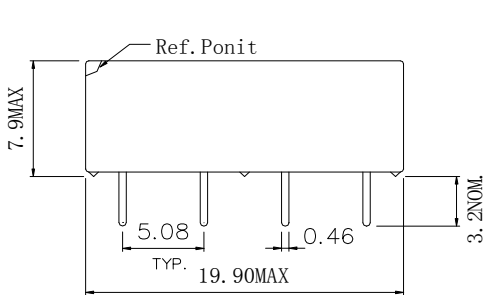
Contact Form	Coil Voltage			Coil Resistance			Operate Voltage			Release Voltage			Minimum Input Power		
	Volts						Volts			Volts			Mw		
				10% (20 ° C)			Must operate by (20 ° C)			Must release by (20 ° C)					
	Min	Nom	Max	Min	Nom	Max	Min	Nom	Max	Min	Nom	Max	Min	Nom	Max
1-Form-A		24	40	1800	2000	2200			17.5	2.5				288	

MECHANICAL DIMENSIONS

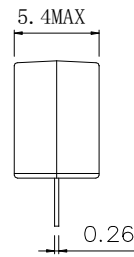
Mechanical Dimensions:

All dimensions are measured in millimeters

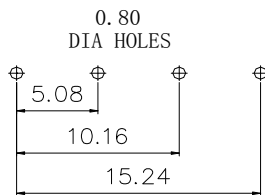
SIP Form A



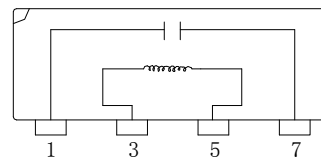
(一) Front View



(二) Side View



(三) PCB Hole Layout



(四) CIRCUIT DIAGRAM

*Remark:

(1) All dimensions are measured in millimeters

APPROVED:

CHECKED:

PREPARED:

X-ON Electronics

Largest Supplier of Electrical and Electronic Components

Click to view similar products for [General Purpose Relays](#) category:

Click to view products by [PAN](#) manufacturer:

Other Similar products are found below :

[PCN-105D3MH,000](#) [59641F200](#) [5JO-1000CD-SIL](#) [5X827E](#) [5X837F](#) [5X840F](#) [5X842F](#) [5X848E](#) [LY2N-AC120](#) [LY2S-AC220/240](#) [LY2-US-AC120](#) [LY2-US-DC24](#) [LY3-US-AC120](#) [LY4F-UA-DC12](#) [LY4F-UA-DC24](#) [LY4F-US-AC120](#) [LY4F-US-AC240](#) [LY4F-US-DC24](#) [LY4F-VD-AC110](#) [LYQ20DC12](#) [M115C60](#) [M115N010](#) [M115N0150](#) [603-12D](#) [60HE1-5DC](#) [60HE2S-12DC](#) [61211T0B4](#) [61212T400](#) [61222Q400](#) [61243B600](#) [61243C500](#) [61243Q400](#) [61311BOA2](#) [61311BOA6](#) [61311BOA8](#) [61311C0A2](#) [61311COA1](#) [61311COA6](#) [61311F0A2](#) [61311QOA1](#) [61311QOA4](#) [61311T0D6](#) [61311TOA6](#) [61311TOA7](#) [61311TOB3](#) [61311TOB4](#) [61311U0A6](#) [61312Q600](#) [61312T400](#) [61312T600](#)