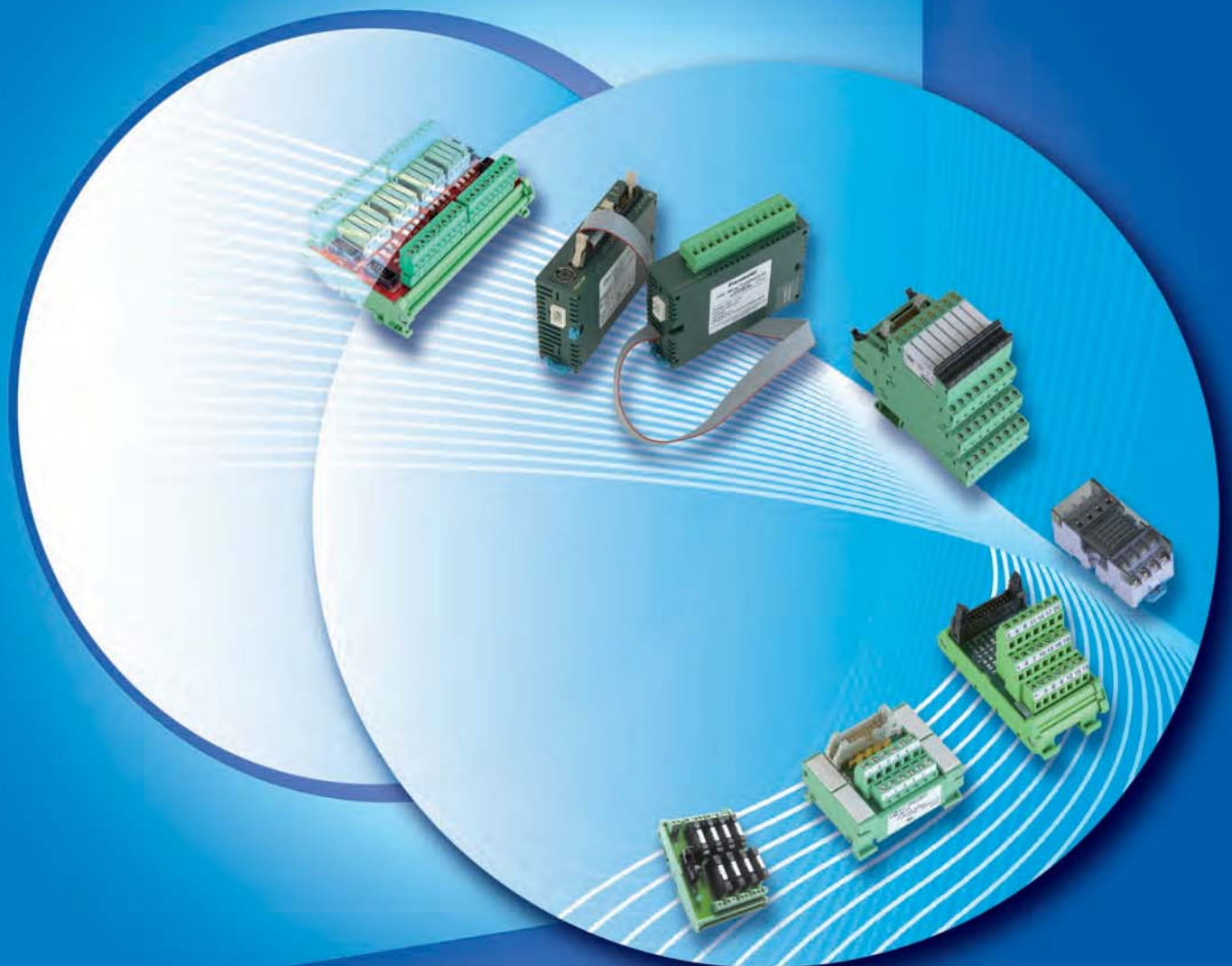


SOLUTIONS

CONNECTION TECHNOLOGY FOR
PROGRAMMABLE LOGIC CONTROLLERS



► Connector terminals (distribution boxes)



AFPCT10PINS



UM45-FLK14PLC



UM45-FLK14LAPLC



MF20MD



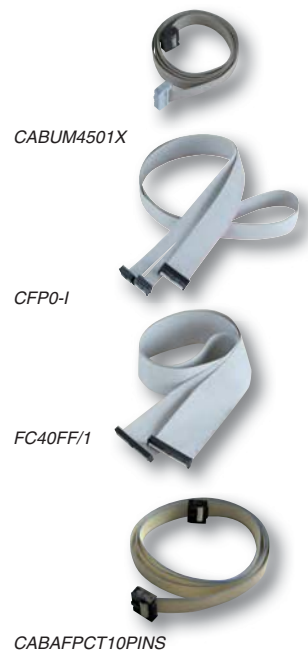
MF40MD

Panasonic distribution boxes are the ideal supplement for connecting the field and automation levels. The terminals are attached to the PLC with a MIL connector and to peripheral devices via screw terminals. The connector terminals, which are mounted on DIN rails, can be used to connect wires with cross sections of 0.5 to 2.5mm².

Part number	AFPCT10PINS	UM45-FLK14PLC	UM45-FLK14LAPLC	MF20MD	MF40MD
Number of PLC connections	10	14	14	20	40
Number of peripheral connections	20	12	12	21	42
Number of connectable PLC I/Os	8 I/Os and power supply	8 I/Os and power supply	8 I/Os and power supply	16 I/Os and power supply	32 I/Os and power supply
Diagnostic LED	Yes	No	Yes	No	No
Conductor cross section in mm ²	Up to 1.5 ²	Up to 1.5 ²	Up to 1.5 ²	Up to 2.5 ²	Up to 2.5 ²
Power supply voltage	24V DC	24V DC	24V DC	24V DC	24V DC
Dimensions (LxHxW) in mm	80x45x52	58x46x46	58x46x46	47x92x76	80x92x76
Flat connection cable for PLC input units	CABAFPCT10PINS	CABUM4501X CABUM4503X	CABUM4501X CABUM4503X	CFP0-I	FC40FF/1
Flat connection cable for PLC output units	CABAFPCT10PINS	CABUM4501Y CABUM4503Y	CABUM4501Y CABUM4503Y	CFP0-I	FC40FF/1

► Flat cable for systematic wiring with Panasonic PLC I/O units

Part number	Description
CABUM4501X	Flat cable with a connector, UM (14-pin) <-> FPO/FPΣ (Sigma) input connectors (10-pin), 1m
CABUM4503X	Flat cable with a connector, UM (14-pin) <-> FPO/FPΣ (Sigma) input connectors (10-pin), 3m
CABUM4501Y	Flat cable with a connector, UM (14-pin) <-> FPO/FPΣ (Sigma) output connectors (10-pin), 1m
CABUM4503Y	Flat cable with a connector, UM (14-pin) <-> FPO/FPΣ (Sigma) output connectors (10-pin), 3m
CFP0-I	Flat cable with connector, MF20MD <-> FPO PLC units, 20-pin to 2x10-pin, 1m
FC40FF/1	Flat cable with connector, MF40MD <-> PLC units, 40-pin, 1m
CABAFPCT10PINS	Flat cable with connector, AFPCT10PINS/AFPRT8 (10-pin) <-> FPO/FP-Sigma I/O connectors (10-pin), 1m



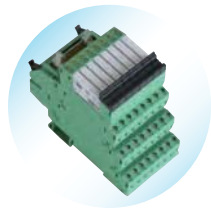
Relay terminals



RT3SPx24



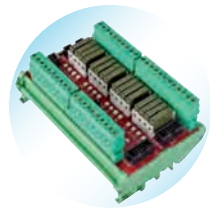
AFPRT8



PLC-BSC



FP0-RT8Y-6A



MMFP0XY32B

Panasonic relay terminals offer additional possibilities for controlling valves, contactors & breakers, etc., and they are easy to mount. The terminals are attached to the PLC with a MIL connector and to peripheral devices via screw terminals. The relay terminals, which are mounted on DIN rails, can be used to connect wires with cross sections of 0.5 bis 2.5mm².

Part number	RT3SP124	RT3SP224	AFPRT8	PLC-BSC	FP0-RT8Y-6A	MMFP0XY32B
Number of PLC connections	8	8	10	14	10	40
Number of peripheral connections	8	8	26	24	13	42
Number of connectable PLC in-/outputs	0/4	0/4	0/8 and power supply	0/8 and power supply	0/8 and power supply	16/16 and power supply
Diagnostic LED	Yes	Yes	Yes	Yes	No	Yes
Operating voltage	24V DC	24V DC	24V DC	24V DC	24V DC	24V DC
Contact type	PhotoMOS N.O.	PhotoMOS N.O.	Changeover	Changeover	N.O.	16 x N.O.
Contact connection type	Screw terminal	Screw terminal	Screw terminal	Screw terminal	MC connector	Screw terminal
Conductor cross-section in mm ²	Up to 1.5 ²	Up to 1.5 ²	Up to 1.5 ²	Up to 2.5 ²	Up to 2.5 ²	Up to 1.5 ²
Resistive load (Rated specification)	30V DC	250V AC 30V DC	250V AC 30V DC	250V AC 30V DC	250V AC	250V AC 30V DC
Nominal switching capacity	2A	0.3A	2A	6A	2A	1.8A
Protective circuit	No	No	Surge absorber Integrated	Surge absorber Integrated	Surge absorber Integrated	No
Dimensions (LxHxW) in mm	33x76x32	33x76x32	83x125x63	50x100x94	25x90x60	255x90x55
Flat connection cable for PLC output units	-	-	CABAFPCT10PINS	CABPLCBSC01 CABPLCBSC03	Integrated in unit	CABAFPCT10PINS

Flat cables for systematic connection with Panasonic PLC output units

Part number	Description
CABUM4501Y	Flat cable with a connector, PLC-BSC (14-pin) <-> FP0/FP0R/FPΣ (Sigma), 1m
CABUM4503Y	Flat cable with a connector, PLC-BSC (14-pin) <-> FP0/FP0R/FPΣ (Sigma), 3m
FC40FF/1	Flat cable with connector, MF40MD <-> PLC units, 40-pin, 1m
AFP0541	Flat cable with connector, AFPRT8/AFPCT10PINS <-> PLC units, 40-pin to 4x10-pin, 1m
CABAFPCT10PINS	Flat cable with connector, AFPCT10PINS/AFPRT8 (10-pin) <-> FP0/FPΣ (Sigma) I/O connectors (10-pin), 1m



CABPLCBSC01



FC40FF/1

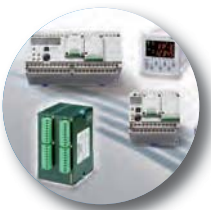


AFP0541



CABAFPCT10PINS

Other products from Panasonic



PLCs

Our controllers cover the entire spectrum from compact PLCs to high performance controllers with up to 8192 I/Os. Our user-friendly and flexible programming software FP-WIN Pro (IEC 61131-3) is suited for both small and sophisticated applications. Additional software modules make our controllers ideal for data storage, process automation and M2M data communication.



HMIs

The new HMIs from Panasonic are universally suited for industrial applications as well as office environments. From the compact 3" to the large touch terminal with a 15" color display for upscale applications, Panasonic HMIs cover a broad spectrum.



Sensors

Panasonic incorporates innovative sensor technology for a comprehensive range of sensor products. Among others, Panasonic offers: through-beam, retroreflective and diffuse reflective type sensors, photoelectric sensors with optical fibers, contrast, color and laser sensors, inductive proximity switches, safety light curtains, as well as miniature pressure and flow rate sensors.



Timers and counters

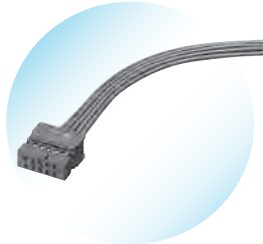
Panasonic's precision timers, counters, preset type counters and time switches are flexible, reliable and affordable. Moreover, you can be sure that the wide product range will always include the right device for your application.

Wiring aids

Panasonic provides various wiring aids to help you wire your application safely and quickly. Depending on the demand, single wire or cables are available. If individual connection lengths are needed, they can be crimped with Panasonic's pressure connection tool and the appropriate pressure contacts. The right tool for the right job – naturally from Panasonic!



AFP052xCOLD



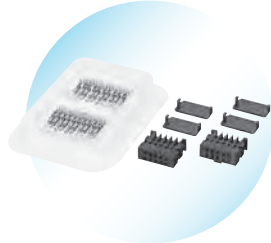
AFP052xD



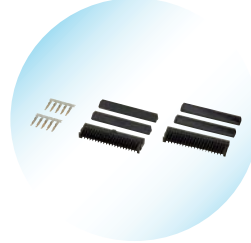
AYT5840xBLUED



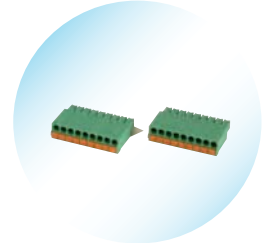
AYT5840xCOLD



AFP0807



AFP2801



SPRINGTERMINAL9PINS

Part number	Description
AFP0521COLD	I/O cable with 10-pin MIL connector with 10 individually colored wires, (sales unit: 2 pcs.), 1m
AFP0522COLD	I/O cable with 10-pin MIL connector with 10 individually colored wires, (sales unit: 2 pcs.), 2m
AFP0521D	I/O cable with 10-pin MIL connector with 10 individual wires, (sales unit: 2 pcs., 1 x blue / 1 x white wires), 1m
AFP0523D	I/O cable with 10-pin MIL connector with 10 individual wires, (sales unit: 2 pcs., 1 x blue / 1 x white wires), 3m
AFP0521BLUED	I/O cable with 10-pin MIL connector with 10 individual blue wires, (sales unit: 2 pcs.), 1m
AFP0523BLUED	I/O cable with 10-pin MIL connector with 10 individual blue wires, (sales unit: 2 pcs.), 3m
AYT58403BLUED	I/O cable with 40-pin MIL connector with 40 individual blue wires, 1m
AYT58406BLUED	I/O cable with 40-pin MIL connector with 40 individual blue wires, 3m
AYT58403COLD	I/O cable with 40-pin MIL connector with 40-wire cable, wire color according to DIN 47100, 1m
AYT58406COLD	I/O cable with 40-pin MIL connector with 40-wire cable, wire color according to DIN 47100, 3m
AFP0807	Connector set, 10-pin MIL housing plus crimp contacts for connecting 0.25mm² single wires (sales unit: 2 pcs.)
AFP2801	Connector set, 40-pin MIL housing plus crimp contacts for connecting 0.25mm² single wires (sales unit: 2 pcs.)
SPRINGTERMINAL9PINS	Connector terminal for FP0 and FPΣ (Sigma), 1.5mm² spring tension connection, 9-pin, (sales unit: 2 pcs.)
AXW7221	Crimp contacts for MIL housing, for cable type 0.25mm², AWG#22/24 (maintenance part, sales unit: 5 pcs. bound)

North America

Europe

Asia Pacific

China

Japan

Panasonic Electric Works

Please contact our Global Sales Companies in:

Europe		
▶ Headquarters	Panasonic Electric Works Europe AG	Rudolf-Diesel-Ring 2, 83607 Holzkirchen, Tel. +49 (0) 8024 648-0, Fax +49 (0) 8024 648-111, www.panasonic-electric-works.com
▶ Austria	Panasonic Electric Works Austria GmbH	Josef Madersperger Str. 2, 2362 Biedermannsdorf, Tel. +43 (0) 2236-26846, Fax +43 (0) 2236-46133 www.panasonic-electric-works.at
	PEW Electronic Materials Europe GmbH	Ennshafenstraße 30, 4470 Enns, Tel. +43 (0) 7223 883, Fax +43 (0) 7223 88333, www.panasonic-electronic-materials.com
▶ Benelux	Panasonic Electric Works Sales Western Europe B.V.	De Rijn 4, (Postbus 211), 5684 PJ Best, (5680 AE Best), Netherlands, Tel. +31 (0) 499 372727, Fax +31 (0) 499 372185, www.panasonic-electric-works.nl
▶ Czech Republic	Panasonic Electric Works Czech s.r.o.	Sales Office Brno, Administrative centre PLATINIUM, Veverí 111, 616 00 Brno, Tel. +420 541 217 001, Fax +420 541 217 101, www.panasonic-electric-works.cz
▶ France	Panasonic Electric Works Sales Western Europe B.V.	Succursale française, 10, rue des petits ruisseaux, 91370 Verrières Le Buisson, Tél. +33 (0) 1 6013 5757, Fax +33 (0) 1 6013 5758, www.panasonic-electric-works.fr
▶ Germany	Panasonic Electric Works Europe AG	Rudolf-Diesel-Ring 2, 83607 Holzkirchen, Tel. +49 (0) 8024 648-0, Fax +49 (0) 8024 648-111, www.panasonic-electric-works.de
▶ Hungary	Panasonic Electric Works Europe AG	Magyarországi Közvetlen Kereskedelmi Képviselet, 1117 Budapest, Neumann János u. 1., Tel. +36 1 999 89 26 www.panasonic-electric-works.hu
▶ Ireland	Panasonic Electric Works UK Ltd.	Irish Branch Office, Dublin, Tel. +353 (0) 14600969, Fax +353 (0) 14601131, www.panasonic-electric-works.co.uk
▶ Italy	Panasonic Electric Works Italia srl	Via del Commercio 3-5 (Z.I. Ferlina), 37012 Bussolengo (VR), Tel. +39 0456752711, Fax +39 0456700444, www.panasonic-electric-works.it
▶ Nordic Countries	Panasonic Electric Works Nordic AB	Knarrarnäsgratan 15, 164 40 Kista, Sweden, Tel. +46 859476680, Fax +46 859476690, www.panasonic-electric-works.se
▶ Poland	Panasonic Electric Works Polska sp. z o.o	Jungmansgatan 12, 21119 Malmö, Tel. +46 40 697 7000, Fax +46 40 697 7099, www.panasonic-fire-security.com
▶ Portugal	Panasonic Electric Works España S.A.	ul. Wołoska 9A, 02-583 Warszawa, Tel. +48 (0) 22 338-11-33, Fax +48 (0) 22 338-12-00, www.panasonic-electric-works.pl
▶ Spain	Panasonic Electric Works España S.A.	Portuguese Branch Office, Avda Adelino Amaro da Costa 728 R/C J, 2750-277 Cascais, Tel. +351 214812520, Fax +351 214812529
▶ Switzerland	Panasonic Electric Works Schweiz AG	Barajas Park, San Severo 20, 28042 Madrid, Tel. +34 913293875, Fax +34 913292976, www.panasonic-electric-works.es
▶ United Kingdom	Panasonic Electric Works UK Ltd.	Grundstrasse 8, 6343 Rotkreuz, Tel. +41 (0) 41 7997050, Fax +41 (0) 41 7997055, www.panasonic-electric-works.ch
		Sunrise Parkway, Linford Wood, Milton Keynes, MK14 6 LF, Tel. +44 (0) 1908 231555, Fax +44 (0) 1908 231599, www.panasonic-electric-works.co.uk

North & South America		
▶ USA	PEW Corporation of America	629 Central Avenue, New Providence, N.J. 07974, Tel. 1-908-464-3550, Fax 1-908-464-8513, www.pewa.panasonic.com

Asia Pacific / China / Japan		
▶ China	Panasonic Electric Works (China) Co., Ltd.	Level 2, Tower W3, The Towers Oriental Plaza, No. 2, East Chang An Ave., Dong Cheng District, Beijing 100738, Tel. (010) 5925-5988, Fax (010) 5925-5973
▶ Hong Kong	Panasonic Electric Works (Hong Kong) Co., Ltd.	RM1205-9, 12/F, Tower 2, The Gateway, 25 Canton Road, Tsimshatsui, Kowloon, Hong Kong, Tel. (0852) 2956-3118, Fax (0852) 2956-0398
▶ Japan	Panasonic Electric Works Co., Ltd.	1048 Kadoma, Kadoma-shi, Osaka 571-8686, Japan, Tel. (06) 6908-1050, Fax (06) 6908-5781, http://panasonic-electric-works.net
▶ Singapore	Panasonic Electric Works Asia Pacific Pte. Ltd.	101 Thomson Road, #25-03/05, United Square, Singapore 307591, Tel. (06255) 5473, Fax (06253) 5689

X-ON Electronics

Largest Supplier of Electrical and Electronic Components

Click to view similar products for [panasonic](#) manufacturer:

Other Similar products are found below :

[ECE-A1HKAR47](#) [ELC-09D151F](#) [HC2-H-DC48V-F](#) [HL2-HP-AC120V-F](#) [HL2-H-DC12V-F](#) [HL2-HP-DC12V-F](#) [HL2-HP-DC6V-F](#) [HL2-HP-DC24V-F](#) [HL2-H-DC110V-F](#) [HC4-H-DC24V](#) [HL2-HTM-DC24V-F](#) [HL2-HTM-AC24V-F](#) [HC4-H-AC24V](#) [HC4-H-AC120V](#) [HC4-H-DC12V](#) [AZH2031](#) [RP-SDMF64DA1](#) [EVM-F6SA00B55](#) [RP-SMLE08DA1](#) [ERZ-V20R391](#) [ELL-ATV681M](#) [ERZ-V05V680CB](#) [LT4H-DC24V](#) [LT4HL8-AC24V](#) [LT4HW-AC24V](#) [LT4HWT8-AC240V](#) [LT4HWT-AC240VS](#) [CY-122A-P](#) [ETQ-P5M470YFM](#) [EVAL_PAN1555](#) [EVQ-PAE04M](#) [EX-14B](#) [EX-22B-PN](#) [EX-31A-C5](#) [EXB-24N121JX](#) [MC-NA40-4](#) [EX-F72-PN](#) [EX-L211](#) [EYG-A121803V](#) [MFMCA0030AEB](#) [FCR-M50-AC208V](#) [FC-SFBH-20](#) [FC-SFBH-24](#) [FD-F8Y](#) [MHMA102A1C](#) [MHMD022S1S](#) [MHMD041S1S](#) [MHMD042G1T](#) [MHMD082G1T](#) [FD-S9](#)