

Chip Type Specialty Polymer Aluminum Electrolytic Capacitors (SP Cap)

Japan

Series: **CB**

■ Features

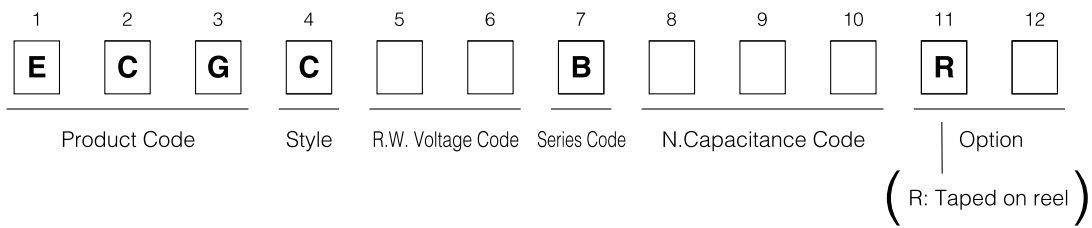
- Low impedance at high frequency (10 kHz to 10 MHz) as low as ceramic capacitors (Reduced ESR due to an applying speciality polymer with high conductivity.)
- Excellent Noise-absorbent Characteristics
- Surface Mount (Reflow soldering method available)
- Very stable capacitance, impedance and ESR against temperature
- Excellent endurance characteristics due to adoption of solid electrolyte
- 4-terminal-construction helps further low impedance.

■ Specifications

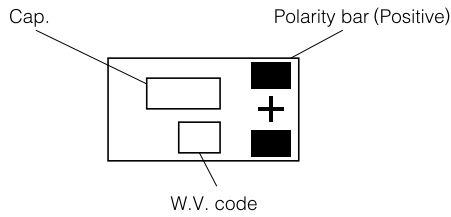
Operating Temp. Range	-40 to +105 °C							
Rated W.V. Range	4 to 16 V.DC							
Nominal Cap. Range	2.2 to 82 μF							
Capacitance Tolerance	±20 % (120 Hz/+20 °C)							
DC Leakage Current	I ≤ 0.04 CV or 3 (μA) after 2 minutes (Whichever is the greater) (4W.V.:0.06CV)							
Dissipation Factor	≤ 0.06 (120 Hz/+20°C)							
Surge Voltage	Rated Working Voltage × 1.25 (15 to 35 °C)							
Endurance	<p>After applying rated working voltage for 1000 hours at +105 °C, and then being stabilized at +20 °C, capacitor shall meet the following limits.</p> <table border="1"> <tbody> <tr> <td>Capacitance change</td> <td>±10 % of initial measured value</td> </tr> <tr> <td>D.F.</td> <td>≤ Initial specified value</td> </tr> <tr> <td>DC leakage current</td> <td>≤ Initial specified value</td> </tr> </tbody> </table>		Capacitance change	±10 % of initial measured value	D.F.	≤ Initial specified value	DC leakage current	≤ Initial specified value
Capacitance change	±10 % of initial measured value							
D.F.	≤ Initial specified value							
DC leakage current	≤ Initial specified value							
Moisture Resistance	<p>After storing for 500 hours at +60 °C, 90 % R.H.</p> <table border="1"> <tbody> <tr> <td>Capacitance change</td> <td>+40 %, -20 % of initial measured value (4W.V.:+60 %, -20 % 6.3W.V.:+50 %, -20 %)</td> </tr> <tr> <td>D.F.</td> <td>≤ Initial specified value (4W.V., ECGC□□B□□□RA: ≤ 200 % of Initial specified value)</td> </tr> <tr> <td>DC leakage current</td> <td>≤ Initial specified value</td> </tr> </tbody> </table>		Capacitance change	+40 %, -20 % of initial measured value (4W.V.:+60 %, -20 % 6.3W.V.:+50 %, -20 %)	D.F.	≤ Initial specified value (4W.V., ECGC□□B□□□RA: ≤ 200 % of Initial specified value)	DC leakage current	≤ Initial specified value
Capacitance change	+40 %, -20 % of initial measured value (4W.V.:+60 %, -20 % 6.3W.V.:+50 %, -20 %)							
D.F.	≤ Initial specified value (4W.V., ECGC□□B□□□RA: ≤ 200 % of Initial specified value)							
DC leakage current	≤ Initial specified value							
Permissible Current Between Terminals with Same Polarity	2 A DC max. (This shall be applicable only when each terminal is landed or the circuit individually).							

Design, Specifications are subject to change without notice. Ask factory for technical specifications before purchase and/or use. Whenever a doubt about safety arises from this product, please inform us immediately for technical consultation without fail.

■ Explanation of Part Numbers

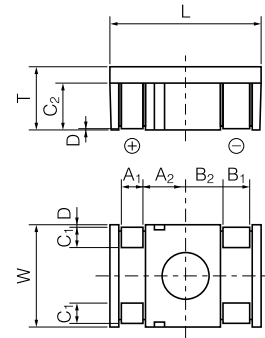


■ Marking



(V)	4	6.3	8	12.5	16
(W.V. code)	g	j	k	B	C

■ Dimensions in mm (not to scale)



Size code	L ±0.2	W ±0.1	T ±0.1	A ₁ ±0.1	A ₂ ±0.1
	7.9	5.3	3.3	1.2	2.2
Size code	B ₁ ±0.1	B ₂ ±0.1	C ₁ ±0.2	C ₂ ±0.1	D ±0.1
	1.5	1.9	1.2	2.4	0

■ Standard product

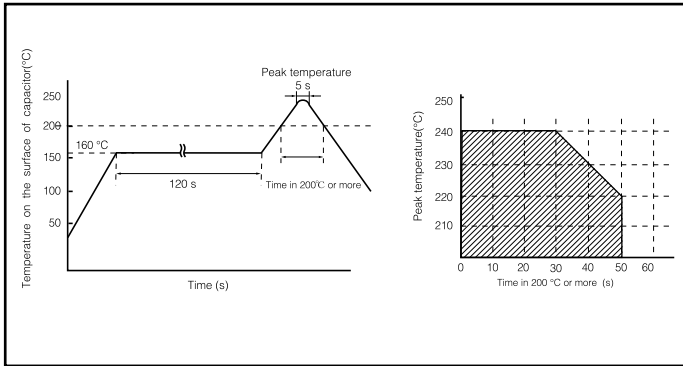
Rated W.V. (V.DC)	Capacitance (μF)	Part number	Impedance (Ω) (400 kHz/+20 °C)	Ripple current (A r.m.s.) (100 kHz/ +20 ~ +105 °C)
4(0G)	15 (150)	ECGC0GB150R	0.11	1.3
	33 (330)	ECGC0GB330R	0.06	1.6
	47 (470)	ECGC0GB470R	0.05	1.6
	68 (680)	ECGC0GB680R	0.04	1.6
	82 (820)	ECGC0GB820RA	0.04	1.6
6.3 (0J)	10 (100)	ECGC0JB100R	0.13	1
	22 (220)	ECGC0JB220R	0.09	1.3
	33 (330)	ECGC0JB330R	0.06	1.6
	47 (470)	ECGC0JB470R	0.05	1.6
	68 (680)	ECGC0JB680RA	0.04	1.6
8 (0K)	8.2 (8R2)	ECGC0KB8R2R	0.14	1
	15 (150)	ECGC0KB150R	0.11	1.3
	22 (220)	EEFCD0K220R	0.09	1.6
	33 (330)	ECGC0KB330R	0.06	1.6
	47 (470)	ECGC0KB470RA	0.05	1.6
12.5 (1B)	4.7 (4R7)	ECGC1BB4R7R	0.18	1
	10 (100)	ECGC1BB100R	0.13	1
	15 (150)	ECGC1BB150R	0.11	1.3
	22 (220)	ECGC1BB220R	0.09	1.6
	33 (330)	EEFCD1B330RA	0.06	1.6
16 (1C)	2.2 (2R2)	ECGC1CB2R2R	0.38	1
	4.7 (4R7)	ECGC1CB4R7R	0.18	1
	6.8 (6R8)	ECGC1CB6R8R	0.15	1
	10 (100)	ECGC1CB100R	0.13	1

() shows W.V. and capacitance code.

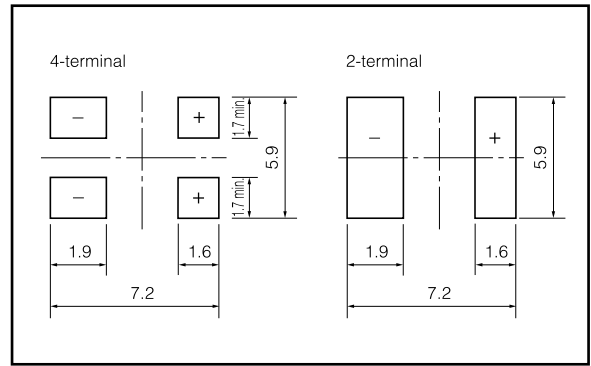
Design, Specifications are subject to change without notice. Ask factory for technical specifications before purchase and/or use. Whenever a doubt about safety arises from this product, please inform us immediately for technical consultation without fail.

■ Mounting Specifications.

- Recommendable reflow soldering temperature

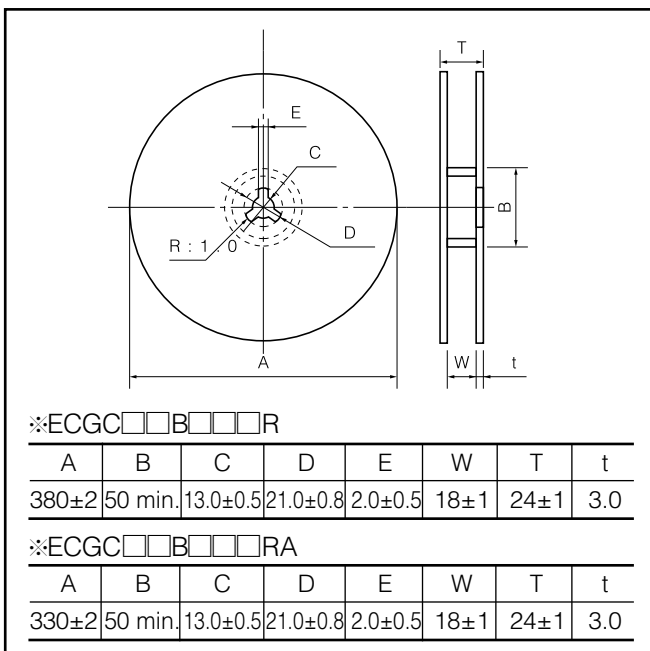


- Typical land pattern (mm)

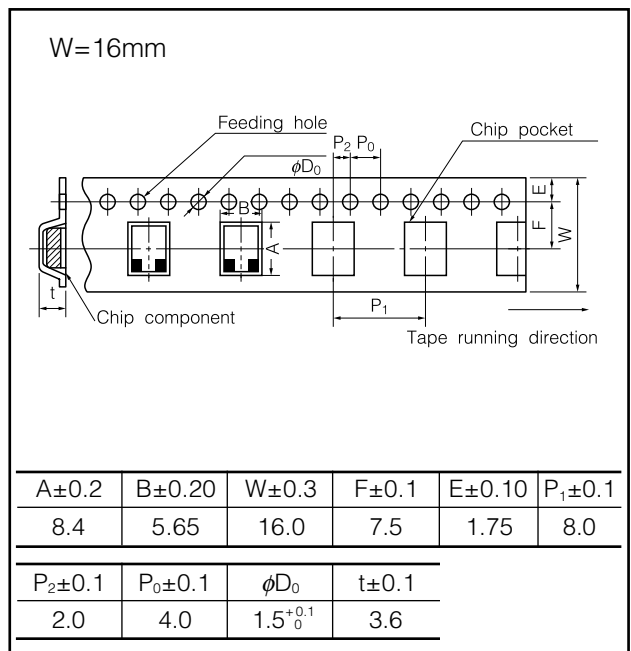


■ Packaging Specifications

- Reel Dimensions (mm)



- Embossed Taping (mm)



■ Packaging Quantity

※ECGC□□B□□□R

Embossed taping

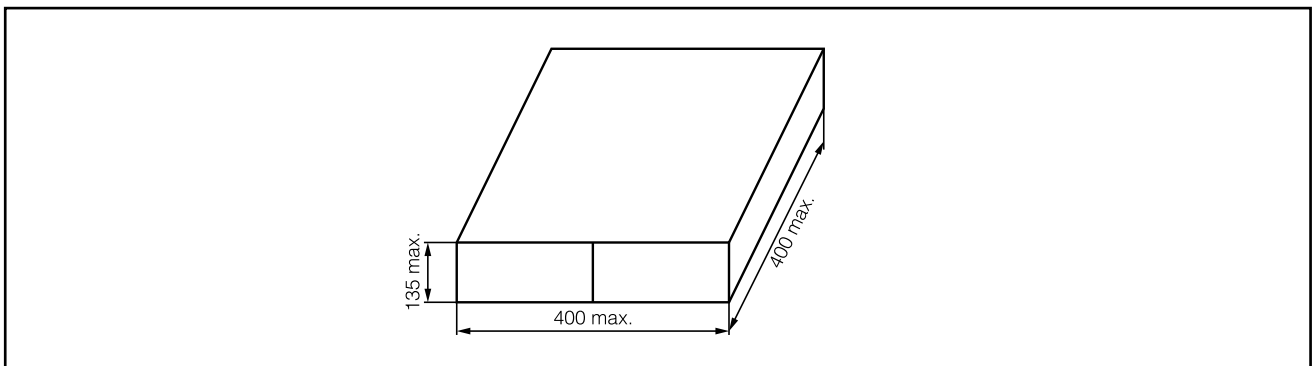
3000 pcs./reel, 15000 pcs./box

※ECGC□□B□□□RA

Embossed taping

2200 pcs./reel, 11000 pcs./box

■ Packaging Box Dimensions (mm)



Design, Specifications are subject to change without notice. Ask factory for technical specifications before purchase and/or use. Whenever a doubt about safety arises from this product, please inform us immediately for technical consultation without fail.

MEMO

X-ON Electronics

Largest Supplier of Electrical and Electronic Components

Click to view similar products for [Aluminum Organic Polymer Capacitors](#) category:

Click to view products by [Panasonic](#) manufacturer:

Other Similar products are found below :

[D38999/20WJ43SN-LC](#) [750-1809](#) [MS27467T25F24P](#) [176P12](#) [SEAU0A0102G](#) [BTM-16-513](#) [MS3470W8-33P L/C](#) [MAL218497702E3](#)
[MAL218497801E3](#) [MAL218397005E3](#) [MAL218297003E3](#) [MAL218397603E3](#) [MAL218297802E3](#) [MAL218497701E3](#) [MAL218697502E3](#)
[MAL218397102E3](#) [MAL218297804E3](#) [MAL218497902E3](#) [MAL218497804E3](#) [MAL218297001E3](#) [MAL218697005E3](#) [MAL218697509E3](#)
[MAL218397806E3](#) [MAL218297603E3](#) [MAL218397604E3](#) [MAL218697106E3](#) [MAL218297005E3](#) [MAL218397106E3](#) [MAL218297103E3](#)
[MAL218697108E3](#) [MAL218497903E3](#) [MAL218497703E3](#) [MAL218297701E3](#) [MAL218297101E3](#) [MAL218397104E3](#) [MAL218397801E3](#)
[MAL218297604E3](#) [MAL218397803E3](#) [MAL218697601E3](#) [MAL218697554E3](#) [MAL218697607E3](#) [MAL218397805E3](#) [MAL218297105E3](#)
[MAL218397702E3](#) [MAL218697104E3](#) [MAL218297702E3](#) [MAL218497901E3](#) [MAL218497806E3](#) [MAL218697001E3](#) [EEF-CX0J221YR](#)