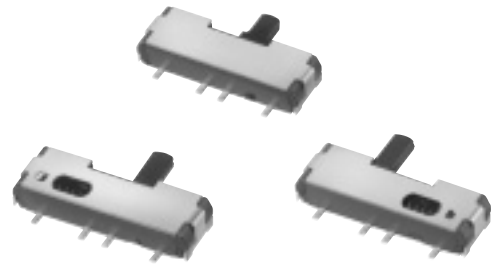


## 2 mm Size Slide Switches for Reflow Soldering

Japan

Type: **ESD16**

Self-returning, SMD type



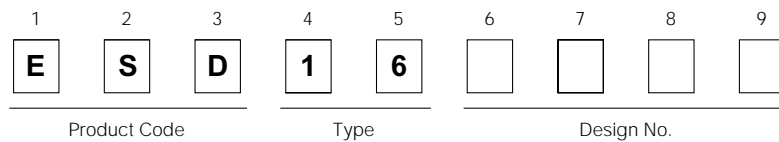
### ■ Features

- Dual application (detent and self-returning type)
- Available for reflow soldering
- Available for automatic mounting

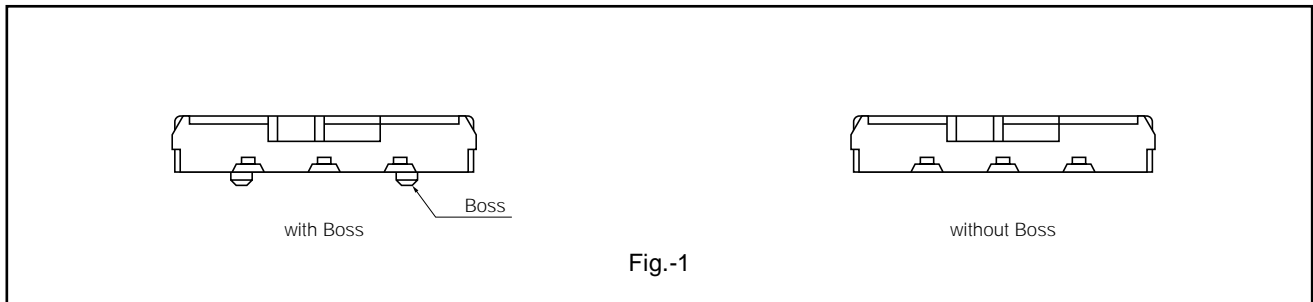
### ■ Recommended Applications

- Signal switches for cordless telephones
- Power switches for digital still cameras and notebook personal computers

### ■ Explanation of Part Numbers



### ■ Standard Types and Part Numbers



Packaging Style	Type	Boss		without Boss		
		Lever length	2.0 mm	2.5 mm	2.0 mm	2.5 mm
Embossed Taping (Reel Pack)	with Detent		ESD165205	ESD165206	ESD165207	ESD165208
	Self-returning (Right)		ESD165225	ESD165226	ESD165227	ESD165228
	Self-returning (Left)		ESD165235	ESD165236	ESD165237	ESD165238
Polyethylene Bag (Bulk)	with Detent		ESD165255	ESD165256	ESD165257	ESD165258
	Self-returning (Right)		ESD165275	ESD165276	ESD165277	ESD165278
	Self-returning (Left)		ESD165285	ESD165286	ESD165287	ESD165288

Note: With/without Boss, See Fig.-1

### Specifications

Types	with Detent	Self-returning
Lever Position	Horizontal	
Rating	50 $\mu$ A 3 Vdc to 0.2 A 5 Vdc (Resistive load)	
Travel	2.0 mm	2.7 mm
Mounting Height	2.0 mm	
Poles and Throws	1-pole 2-throws	
Switching Mode	Non-shorting	
Lever Length	2.0 mm, 2.5 mm	
Minimum Quantity/Packing Unit	200 pcs. Polyethylene Bag (Bulk) / 2000 pcs. Embossed Taping (Reel Pack)	
Quantity/Cartron	4000 pcs.	

### Dimensions in mm (not to scale)

<p><b>No. 1</b></p> <p>1-pole 2-throws With Detent</p> <table border="1"> <tr> <th>Part Number</th> <th>Lever length</th> </tr> <tr> <td>ESD165205</td> <td>2.0</td> </tr> <tr> <td>ESD165206</td> <td>2.5</td> </tr> </table> <p>Operating Force  <math>\text{b} \leftrightarrow \text{a}</math>          1.96 N <math>\pm</math> 0.98 N</p>	Part Number	Lever length	ESD165205	2.0	ESD165206	2.5		<p>Circuit diagram</p> <p>View from terminal side</p> <p>Recommended PWB piercing plan</p> <p>Tolerance: <math>\pm 0.05</math></p>
Part Number	Lever length							
ESD165205	2.0							
ESD165206	2.5							
<p><b>No. 2</b></p> <p>1-pole 2-throws Self-returning (Right)</p> <table border="1"> <tr> <th>Part Number</th> <th>Lever length</th> </tr> <tr> <td>ESD165225</td> <td>2.0</td> </tr> <tr> <td>ESD165226</td> <td>2.5</td> </tr> </table> <p>Operating Force  <math>\text{b} \leftrightarrow \text{a}</math>          2.16 N <math>\pm</math> 0.98 N</p>	Part Number	Lever length	ESD165225	2.0	ESD165226	2.5		<p>Circuit diagram</p> <p>View from terminal side</p> <p>Recommended PWB piercing plan</p> <p>Tolerance: <math>\pm 0.05</math></p>
Part Number	Lever length							
ESD165225	2.0							
ESD165226	2.5							
<p><b>No. 3</b></p> <p>1-pole 2-throws Self-returning (Left)</p> <table border="1"> <tr> <th>Part Number</th> <th>Lever length</th> </tr> <tr> <td>ESD165235</td> <td>2.0</td> </tr> <tr> <td>ESD165236</td> <td>2.5</td> </tr> </table> <p>Operating Force  <math>\text{b} \leftrightarrow \text{a}</math>          2.16 N <math>\pm</math> 0.98 N</p>	Part Number	Lever length	ESD165235	2.0	ESD165236	2.5		<p>Circuit diagram</p> <p>View from terminal side</p> <p>Recommended PWB piercing plan</p> <p>Tolerance: <math>\pm 0.05</math></p>
Part Number	Lever length							
ESD165235	2.0							
ESD165236	2.5							

### Packaging Specifications Standard Reel Dimensions in mm (not to scale)

<p>Taping Reel</p>	<p>Embossed Carrier Taping</p>
--------------------	--------------------------------

## X-ON Electronics

Largest Supplier of Electrical and Electronic Components

*Click to view similar products for [panasonic](#) manufacturer:*

Other Similar products are found below :

[ECE-A1HKAR47](#) [ELC-09D151F](#) [HC2-H-DC48V-F](#) [HL2-HP-AC120V-F](#) [HL2-H-DC12V-F](#) [HL2-HP-DC12V-F](#) [HL2-HP-DC6V-F](#) [HL2-HP-DC24V-F](#) [HL2-H-DC110V-F](#) [HC4-H-DC24V](#) [HL2-HTM-DC24V-F](#) [HL2-HTM-AC24V-F](#) [HC4-H-AC24V](#) [HC4-H-AC120V](#) [HC4-H-DC12V](#) [AZH2031](#) [RP-SDMF64DA1](#) [EVM-F6SA00B55](#) [RP-SMLE08DA1](#) [ERZ-V20R391](#) [ELL-ATV681M](#) [ERZ-V05V680CB](#) [LT4H-DC24V](#) [LT4HL8-AC24V](#) [LT4HW-AC24V](#) [LT4HWT8-AC240V](#) [LT4HWT-AC240VS](#) [CY-122A-P](#) [ETQ-P5M470YFM](#) [EVAL\\_PAN1555](#) [EVQ-PAE04M](#) [EX-14B](#) [EX-22B-PN](#) [EX-31A-C5](#) [EXB-24N121JX](#) [MC-NA40-4](#) [EX-F72-PN](#) [EX-L211](#) [EYG-A121803V](#) [MFMCA0030AEB](#) [FCR-M50-AC208V](#) [FC-SFBH-20](#) [FC-SFBH-24](#) [FD-F8Y](#) [MHMA102A1C](#) [MHMD022S1S](#) [MHMD041S1S](#) [MHMD042G1T](#) [MHMD082G1T](#) [FD-S9](#)