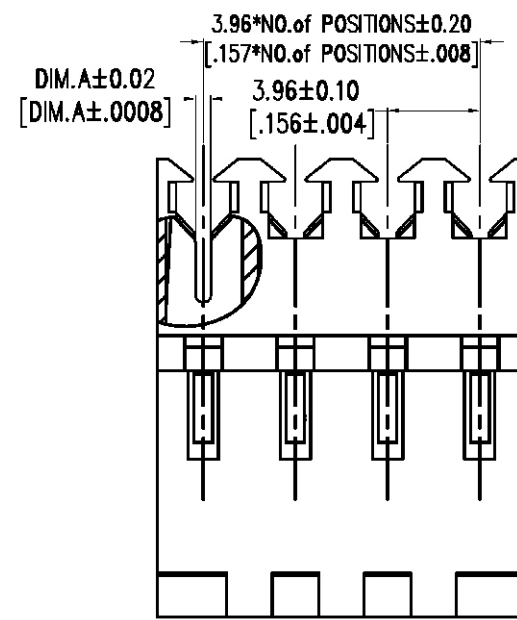
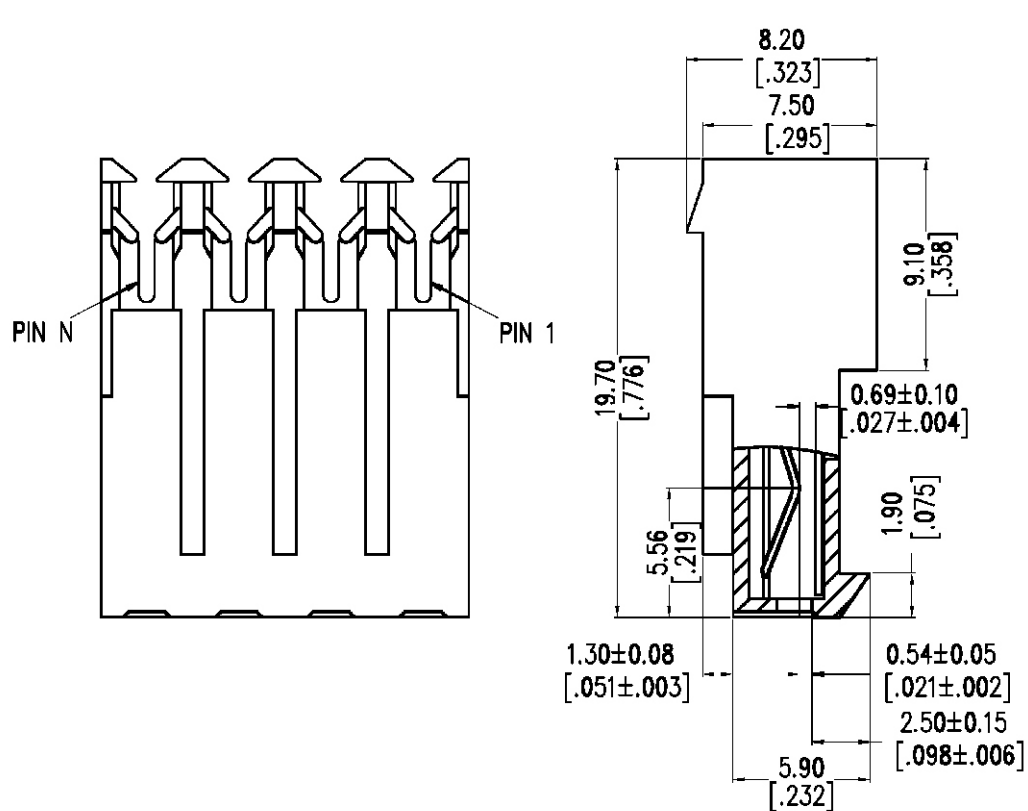


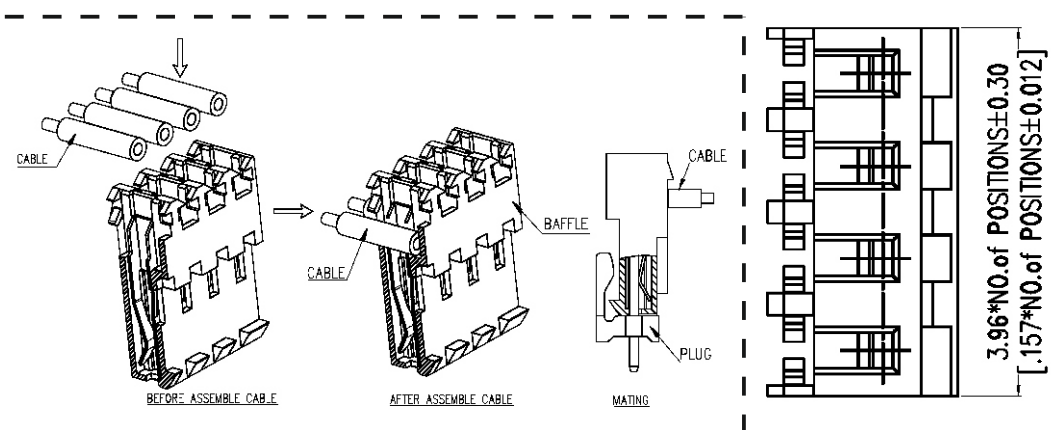
# MAS-CON FEMALE END, Series 156, 3,96mm



NOTES:  
 Current Rating: 5.0–8.0 AMP  
 Voltage Rating: 300V AC  
 Contact Resistance: 10mΩ Max  
 Withstand Voltage: 2200V AC/DC/Minute  
 Insulation Resistance: 5000MΩ Min  
 Operation Temperature: : -55°C to +105°C

Contact Material: Copsy Alloy  
 Contact plating: Sn over Ni  
 Insulator Material: PA66 UL94-V2

| OPERATION |       |
|-----------|-------|
| X.X       | ±0.40 |
| X.XX      | ±0.25 |
| X.XXX     | ±0.15 |
| Angle     | ± 3°  |
| DIM       | TOL   |



Sheet 1 of 2

| REV | DATE       | NOTE          | NAME |
|-----|------------|---------------|------|
| 2   | 21.01.2020 | comp. revised | LAD  |
| 1   | 26.11.2019 | issued        | LAD  |

# MAS-CON FEMALE END, Series 156, 3,96mm



| ORDERING INFORMATION |           |       |           |                |
|----------------------|-----------|-------|-----------|----------------|
| Part No.             | Wire Size | DIM A | AWG color | Current Rating |
| CE156F18- 02- D_E    | 18 AWG    | 0,85  | orange    | 8,0 A          |
| CE156F18- 03- D_E    | 18 AWG    | 0,85  | orange    | 8,0 A          |
| CE156F18- 04- D_E    | 18 AWG    | 0,85  | orange    | 8,0 A          |
| CE156F18- 05- D_E    | 18 AWG    | 0,85  | orange    | 8,0 A          |
| CE156F18- 06- C_E    | 18 AWG    | 0,85  | orange    | 8,0 A          |
| CE156F18- 07- C_E    | 18 AWG    | 0,85  | orange    | 8,0 A          |
| CE156F18- 08- C_E    | 18 AWG    | 0,85  | orange    | 8,0 A          |
| CE156F18- 09- C_E    | 18 AWG    | 0,85  | orange    | 8,0 A          |
| CE156F18- 10- C_E    | 18 AWG    | 0,85  | orange    | 8,0 A          |
| CE156F18- 11- C_E    | 18 AWG    | 0,85  | orange    | 8,0 A          |
| CE156F18- 12- C_E    | 18 AWG    | 0,85  | orange    | 8,0 A          |
| CE156F18- 13- C_E    | 18 AWG    | 0,85  | orange    | 8,0 A          |
| CE156F18- 14- C_E    | 18 AWG    | 0,85  | orange    | 8,0 A          |
| CE156F18- 15- C_E    | 18 AWG    | 0,85  | orange    | 8,0 A          |
| CE156F18- 16- C_E    | 18 AWG    | 0,85  | orange    | 8,0 A          |
| CE156F18- 17- C_E    | 18 AWG    | 0,85  | orange    | 8,0 A          |
| CE156F18- 18- C_E    | 18 AWG    | 0,85  | orange    | 8,0 A          |
| CE156F18- 19- C_E    | 18 AWG    | 0,85  | orange    | 8,0 A          |
| CE156F18- 20- C_E    | 18 AWG    | 0,85  | orange    | 8,0 A          |
| CE156F18- 21- C_E    | 18 AWG    | 0,85  | orange    | 8,0 A          |
| CE156F18- 22- C_E    | 18 AWG    | 0,85  | orange    | 8,0 A          |
| CE156F18- 23- C_E    | 18 AWG    | 0,85  | orange    | 8,0 A          |
| CE156F18- 24- C_E    | 18 AWG    | 0,85  | orange    | 8,0 A          |

| ORDERING INFORMATION |           |       |           |                |
|----------------------|-----------|-------|-----------|----------------|
| Part No.             | Wire Size | DIM A | AWG color | Current Rating |
| CE156F20- 02- D_E    | 20 AWG    | 0,64  | brown     | 7,5 A          |
| CE156F20- 03- D_E    | 20 AWG    | 0,64  | brown     | 7,5 A          |
| CE156F20- 04- D_E    | 20 AWG    | 0,64  | brown     | 7,5 A          |
| CE156F20- 05- D_E    | 20 AWG    | 0,64  | brown     | 7,5 A          |
| CE156F20- 06- C_E    | 20 AWG    | 0,64  | brown     | 7,5 A          |
| CE156F20- 07- C_E    | 20 AWG    | 0,64  | brown     | 7,5 A          |
| CE156F20- 08- C_E    | 20 AWG    | 0,64  | brown     | 7,5 A          |
| CE156F20- 09- C_E    | 20 AWG    | 0,64  | brown     | 7,5 A          |
| CE156F20- 10- C_E    | 20 AWG    | 0,64  | brown     | 7,5 A          |
| CE156F20- 11- C_E    | 20 AWG    | 0,64  | brown     | 7,5 A          |
| CE156F20- 12- C_E    | 20 AWG    | 0,64  | brown     | 7,5 A          |
| CE156F20- 13- C_E    | 20 AWG    | 0,64  | brown     | 7,5 A          |
| CE156F20- 14- C_E    | 20 AWG    | 0,64  | brown     | 7,5 A          |
| CE156F20- 15- C_E    | 20 AWG    | 0,64  | brown     | 7,5 A          |
| CE156F20- 16- C_E    | 20 AWG    | 0,64  | brown     | 7,5 A          |
| CE156F20- 17- C_E    | 20 AWG    | 0,64  | brown     | 7,5 A          |
| CE156F20- 18- C_E    | 20 AWG    | 0,64  | brown     | 7,5 A          |
| CE156F20- 19- C_E    | 20 AWG    | 0,64  | brown     | 7,5 A          |
| CE156F20- 20- C_E    | 20 AWG    | 0,64  | brown     | 7,5 A          |
| CE156F20- 21- C_E    | 20 AWG    | 0,64  | brown     | 7,5 A          |
| CE156F20- 22- C_E    | 20 AWG    | 0,64  | brown     | 7,5 A          |
| CE156F20- 23- C_E    | 20 AWG    | 0,64  | brown     | 7,5 A          |
| CE156F20- 24- C_E    | 20 AWG    | 0,64  | brown     | 7,5 A          |

| ORDERING INFORMATION |           |       |           |                |
|----------------------|-----------|-------|-----------|----------------|
| Part No.             | Wire Size | DIM A | AWG color | Current Rating |
| CE156F22- 02- D_E    | 22 AWG    | 0,48  | red       | 6,5 A          |
| CE156F22- 03- D_E    | 22 AWG    | 0,48  | red       | 6,5 A          |
| CE156F22- 04- D_E    | 22 AWG    | 0,48  | red       | 6,5 A          |
| CE156F22- 05- D_E    | 22 AWG    | 0,48  | red       | 6,5 A          |
| CE156F22- 06- C_E    | 22 AWG    | 0,48  | red       | 6,5 A          |
| CE156F22- 07- C_E    | 22 AWG    | 0,48  | red       | 6,5 A          |
| CE156F22- 08- C_E    | 22 AWG    | 0,48  | red       | 6,5 A          |
| CE156F22- 09- C_E    | 22 AWG    | 0,48  | red       | 6,5 A          |
| CE156F22- 10- C_E    | 22 AWG    | 0,48  | red       | 6,5 A          |
| CE156F22- 11- C_E    | 22 AWG    | 0,48  | red       | 6,5 A          |
| CE156F22- 12- C_E    | 22 AWG    | 0,48  | red       | 6,5 A          |
| CE156F22- 13- C_E    | 22 AWG    | 0,48  | red       | 6,5 A          |
| CE156F22- 14- C_E    | 22 AWG    | 0,48  | red       | 6,5 A          |
| CE156F22- 15- C_E    | 22 AWG    | 0,48  | red       | 6,5 A          |
| CE156F22- 16- C_E    | 22 AWG    | 0,48  | red       | 6,5 A          |
| CE156F22- 17- C_E    | 22 AWG    | 0,48  | red       | 6,5 A          |
| CE156F22- 18- C_E    | 22 AWG    | 0,48  | red       | 6,5 A          |
| CE156F22- 19- C_E    | 22 AWG    | 0,48  | red       | 6,5 A          |
| CE156F22- 20- C_E    | 22 AWG    | 0,48  | red       | 6,5 A          |
| CE156F22- 21- C_E    | 22 AWG    | 0,48  | red       | 6,5 A          |
| CE156F22- 22- C_E    | 22 AWG    | 0,48  | red       | 6,5 A          |
| CE156F22- 23- C_E    | 22 AWG    | 0,48  | red       | 6,5 A          |
| CE156F22- 24- C_E    | 22 AWG    | 0,48  | red       | 6,5 A          |

| ORDERING INFORMATION |           |       |           |                |
|----------------------|-----------|-------|-----------|----------------|
| Part No.             | Wire Size | DIM A | AWG color | Current Rating |
| CE156F24- 02- D_E    | 24 AWG    | 0,34  | black     | 5,0 A          |
| CE156F24- 03- D_E    | 24 AWG    | 0,34  | black     | 5,0 A          |
| CE156F24- 04- D_E    | 24 AWG    | 0,34  | black     | 5,0 A          |
| CE156F24- 05- D_E    | 24 AWG    | 0,34  | black     | 5,0 A          |
| CE156F24- 06- C_E    | 24 AWG    | 0,34  | black     | 5,0 A          |
| CE156F24- 07- C_E    | 24 AWG    | 0,34  | black     | 5,0 A          |
| CE156F24- 08- C_E    | 24 AWG    | 0,34  | black     | 5,0 A          |
| CE156F24- 09- C_E    | 24 AWG    | 0,34  | black     | 5,0 A          |
| CE156F24- 10- C_E    | 24 AWG    | 0,34  | black     | 5,0 A          |
| CE156F24- 11- C_E    | 24 AWG    | 0,34  | black     | 5,0 A          |
| CE156F24- 12- C_E    | 24 AWG    | 0,34  | black     | 5,0 A          |
| CE156F24- 13- C_E    | 24 AWG    | 0,34  | black     | 5,0 A          |
| CE156F24- 14- C_E    | 24 AWG    | 0,34  | black     | 5,0 A          |
| CE156F24- 15- C_E    | 24 AWG    | 0,34  | black     | 5,0 A          |
| CE156F24- 16- C_E    | 24 AWG    | 0,34  | black     | 5,0 A          |
| CE156F24- 17- C_E    | 24 AWG    | 0,34  | black     | 5,0 A          |
| CE156F24- 18- C_E    | 24 AWG    | 0,34  | black     | 5,0 A          |
| CE156F24- 19- C_E    | 24 AWG    | 0,34  | black     | 5,0 A          |
| CE156F24- 20- C_E    | 24 AWG    | 0,34  | black     | 5,0 A          |
| CE156F24- 21- C_E    | 24 AWG    | 0,34  | black     | 5,0 A          |
| CE156F24- 22- C_E    | 24 AWG    | 0,34  | black     | 5,0 A          |
| CE156F24- 23- C_E    | 24 AWG    | 0,34  | black     | 5,0 A          |
| CE156F24- 24- C_E    | 24 AWG    | 0,34  | black     | 5,0 A          |

Sheet 2 of 2

| REV | DATE       | NOTE          | NAME |
|-----|------------|---------------|------|
| 2   | 21.01.2020 | comp. revised | LAD  |
| 1   | 26.11.2019 | issued        | LAD  |

## X-ON Electronics

Largest Supplier of Electrical and Electronic Components

*Click to view similar products for [pancon](#) manufacturer:*

Other Similar products are found below :

[MCT](#) [CE156F18-10-C\\_E](#) [MTAS156-4-D](#) [CTD-100F](#) [MMIT-156F](#) [100-932-432](#) [100-932-033](#) [625309B](#) [100-096-033](#) [CTD-156F](#) [625222E](#)  
[CE100F24-9-C](#) [CE156F20-7-C](#) [SCC100F-6-C](#) [CE100F22-5-D\\_E](#) [625581C](#) [CE156F24-3-D\\_E](#) [CTP100F24-5-D](#) [CE156F20-5-D\\_E](#)  
[CE156F20-07-C](#) [MLSS156-13-C](#) [100-032-033](#) [MUAS100-8-C\\_E](#) [100-964-433](#) [CE156F24-4-D\\_E](#) [CE156F18-7-C\\_E](#) [MTSS156-8-C](#)  
[CE156F20-8-C\\_E](#) [100-964-033](#) [CE156F24-2-D\\_E](#) [100-096-432](#) [100-348-033](#) [CE100F22-7-C\\_E](#) [SCC100F-3-D](#) [MUAS100-6-C\\_E](#) [120-964-](#)  
[435](#) [CE100F22-10-C\\_E](#) [MUAS100-5-D\\_E](#) [MLAS100-10-C](#) [100-032-432](#) [MUAS100-2-D\\_E](#) [CE100F24-10-C\\_E](#) [SCC156F-2-D](#) [MUSS100-](#)  
[10-C\\_E](#) [SCC156F-4-D](#) [CE100F24-16-C\\_E](#) [MTAS156-6-C](#) [CE156F18-5-D\\_E](#) [MTSS156-12-C](#) [CE156F20-12-C\\_E](#)