

Dome-Top® Barb Ty Cable Ties

The two-piece design incorporates a stainless steel locking barb which provides infinite adjustability through entire bundle range. High loop tensile strength exceeds industry standards and the patented low thread force design reduces operator fatigue and improves productivity. This comprehensive product line offers several styles, materials, and colors for a broad range of applications that require high strength and superior performance.



Key Features	Benefits
Dome-Top® head	Smooth, round edges; easy for installers to handle
Stainless steel locking barb	Provides consistent performance, reliability, and infinite adjustability through entire bundle range
High tensile strength	Exceeds industry and Aerospace Standards SAE MS23190A; available in four tensile strengths
Low thread force	Reduces installer fatigue; increases productivity
Anti-slip strap body	Ribbed and stippled strap body prevents axial and lateral movement
Finger tip grip	Exclusively designed finger grip assures positive grip during threading of tie
Curved tip (except light-heavy)	Orients tip toward head for faster initial threading to speed installation; easy to pick up from flat surfaces

Applications



Dome-top head with smooth, round edges



Infinite adjustability



Anti-slip strap body and finger tip grip



Comprehensive selection

Dome-Top® Barb Ty Cable Ties



Locking Ties

- Bundle wires or cables quickly and easily
- Infinite adjustability

Part Number	Length In. (mm)	Max. Bundle Diameter In. (mm)	Min. Loop Tensile Strength Lbs. (N)
-------------	-----------------	-------------------------------	-------------------------------------

Miniature Cross Section

BT1M-C	4.0 (102)	0.90 (23)	18 (80)
BT1.5M-C	6.3 (160)	1.50 (38)	
BT2M-C	7.9 (201)	2.00 (51)	
BT4M-C	14.2 (361)	4.00 (102)	

Intermediate Cross Section

BT1.5I-C	6.1 (155)	1.50 (38)	40 (178)
BT2I-C	8.0 (203)	2.00 (51)	
BT3I-C	11.3 (287)	3.00 (76)	
BT4I-C	14.3 (363)	4.00 (102)	

Standard Cross Section

BT2S-C	8.0 (203)	2.00 (51)	50 (222)
BT3S-C	12.0 (305)	3.00 (76)	
BT4S-C	15.1 (384)	4.00 (102)	

Light-Heavy Cross Section (Straight tip)

BT2LH-L	8.7 (221)	2.00 (51)	120 (534)
BT3LH-L	11.8 (300)	3.00 (76)	
BT4LH-L	14.9 (378)	4.00 (102)	
BT5LH-L	18.1 (460)	5.00 (127)	
BT6LH-L	21.2 (538)	6.00 (152)	
BT7LH-L	24.4 (620)	7.00 (178)	
BT8LH-L	27.5 (699)	8.00 (203)	
BT9LH-L	30.7 (780)	9.00 (229)	



BP, BW designs

Push-Mount Ties

- Used to attach bundles to another surface such as a flat panel; combines cable tie, mount, and fastener into a single part
- Anchor is easily pressed into a pre-formed hole and locks in place
- Wing design (BW) provides constant tension for a stable, secure, and rattle-free installation
- Wingless design (BP) allows tie to be used in confined areas

Bulk Part Number	Length In. (mm)	Max. Panel Thickness In. (mm)	Max. Bundle Diameter In. (mm)	Min. Loop Tensile Strength Lbs. (N)
------------------	-----------------	-------------------------------	-------------------------------	-------------------------------------

Intermediate Cross Section (Wing design)

BW1.5I-D	6.6 (168)	0.093 (2.4)	1.50 (38)	40 (178)
----------	-----------	-------------	-----------	----------

Standard Cross Section (Wing design)

BW2S-D	8.5 (216)	0.156 (4.0)	2.00 (51)	50 (222)
BW3S-D	12.5 (318)	0.156 (4.0)	3.00 (76)	

Standard Cross Section (Wingless design)

BW2S-D0	8.5 (216)	0.156 (4.0)	2.00 (51)	50 (222)
BP2S-D0	8.5 (216)	0.125 (3.2)	2.00 (51)	50 (222)



Clamp Ties

- Used to secure a cable bundle to another surface such as a control panel, communication rack, wall, or ceiling
- Design allows for bundling before or after screwing clamp in place

Part Number	Length In. (mm)	Hole Diameter In. (mm)	Max. Bundle Diameter In. (mm)	Min. Loop Tensile Strength Lbs. (N)
-------------	-----------------	------------------------	-------------------------------	-------------------------------------

Miniature Cross Section

BC1M-S4-M	4.6 (117)	0.122 (3.1)	0.90 (23)	18 (80)
BC2M-S4-M	8.3 (211)	0.122 (3.1)	2.00 (51)	

Intermediate Cross Section

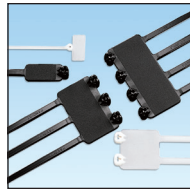
BC1.5I-S8-M	6.6 (168)	0.174 (4.4)	1.50 (38)	40 (178)
-------------	-----------	-------------	-----------	----------

Standard Cross Section

BC2S-S10-C	8.5 (216)	0.200 (5.1)	2.00 (51)	50 (222)
BC3S-S10-D	12.5 (318)	0.200 (5.1)	3.00 (76)	
BC4S-S10-C	15.6 (396)	0.200 (5.1)	4.00 (102)	

Light-Heavy Cross Section (Straight tip)

BC4LH-S25-L	15.5 (394)	0.260 (6.6)	4.00 (102)	120 (534)
-------------	------------	-------------	------------	-----------



Marker and Flag Ties

- Used to fasten and identify bundles at the same time
- Can be marked with Panduit marker pens or custom imprinted with text, symbols, logos, website addresses, sequential numbering, phone numbers, or graphics using Panduit Custom Imprinting Service

Bulk Part Number	Marker Type	Write-On Area In. (mm)	Length In. (mm)	Max. Bundle Diameter In. (mm)	Min. Loop Tensile Strength Lbs. (N)
------------------	-------------	------------------------	-----------------	-------------------------------	-------------------------------------

Miniature Cross Section

BF1M-C	Flag	0.36 x 0.81 (9.1 x 20.6)	4.6 (117)	0.90 (23)	18 (80)
BF2M-C	Flag		8.3 (211)	2.00 (51)	
BM1M-C	Wrap	0.29 x 1.09 (7.4 x 27.7)	4.2 (107)	0.90 (23)	
BM2M-C	Wrap		7.9 (201)	2.00 (51)	

Standard Cross Section

BM2S-C	Wrap	0.49 x 0.91 (12.4 x 23.1)	8.0 (203)	2.00 (51)	50 (222)
BM4S-C	Wrap	0.50 x 2.13 (12.7 x 54.1)	15.1 (384)	4.00 (102)	
B2M2S-D	Wrap	1.15 x 0.91 (29.2 x 23.1)	8.0 (203)	2.00 (51)	
B3M2S-TL	Wrap	1.81 x 0.91 (46.0 x 23.1)			
B4M2S-TL	Wrap	2.47 x 0.91 (62.7 x 23.1)			

Dome-Top® Barb Ty Cable Ties



GTS-E

Tool Controlled Tension and Cut-off

- Ergonomic design
- Tool controlled tension and cut-off
- High reliability



STH2

Installer Controlled Tension and Cut-off

- Economical
- Manual tension and cut-off
- For low volume applications



PTS

Pneumatic, Tool Controlled Tension and Cut-off

- Ergonomic design, push button operation
- Tool controlled tension and cut-off
- High reliability

	Miniature	Intermediate	Standard	Light-Heavy
GTS-E	X	X	X	
GS2B-E	X	X	X	
GTH-E			X	X
GS4H-E			X	X
GS4EH-E				X

	Miniature	Intermediate	Standard	Light-Heavy
STS2	X	X	X	
STH2			X	X
ST3EH				X
STHV				X

	Miniature	Intermediate	Standard	Light-Heavy
PTS	X	X	X	
PTH			X	X

WORLDWIDE SUBSIDIARIES AND SALES OFFICES

PANDUIT US/CANADA
Phone: 800.777.3300

PANDUIT EUROPE LTD.
London, UK
cs-emea@panduit.com
Phone: 44.20.8601.7200

PANDUIT SINGAPORE PTE. LTD.
Republic of Singapore
cs-ap@panduit.com
Phone: 65.6305.7575

PANDUIT JAPAN
Tokyo, Japan
cs-japan@panduit.com
Phone: 81.3.6863.6000

PANDUIT LATIN AMERICA
Guadalajara, Mexico
cs-la@panduit.com
Phone: 52.33.3777.6000

PANDUIT AUSTRALIA PTY. LTD.
Victoria, Australia
cs-aus@panduit.com
Phone: 61.3.9794.9020

For a copy of Panduit product warranties, log on to www.panduit.com/warranty

For more information

Visit us at www.panduit.com

Contact Customer Service by email: cs@panduit.com
or by phone: 800.777.3300

PANDUIT®

©2017 Panduit Corp.
ALL RIGHTS RESERVED.
Printed in the U.S.A.
CTCB55--WW-ENG
replaces SA-CTCB43
6/2017

X-ON Electronics

Largest Supplier of Electrical and Electronic Components

Click to view similar products for [Cable Ties](#) category:

Click to view products by [Panduit](#) manufacturer:

Other Similar products are found below :

[65037-C](#) [770-1751-10](#) [REL50L0C2](#) [20093-0](#) [SF600-120X](#) [SJ3518FR-1x50](#) [SJ3526N-Beige-2"x50yd](#) [SJ3526N BLACK 58" X 50YD](#) [SJ3571](#)
[SJ-3571-1"x50yd-Black](#) [PLT2S-C4](#) [34-455-C](#) [3722](#) [561-B110120](#) [561-N3510](#) [TYZ528M](#) [34-463-C](#) [URT20S-M](#) [06226](#) [08350-0](#) [08600-0](#)
[08376-0](#) [10037-0](#) [10325-0](#) [10362-0](#) [10606-0](#) [1122-4JW8](#) [561-EZ250](#) [561-EZ625](#) [SJ3527N-Beige-2"x50yd](#) [SJ3527N-LOOP-BLACK-1](#)
[SJ3572-2"x50yd-Black](#) [CF5625-000](#) [65004-C](#) [65005-C](#) [65007-C](#) [65036-C](#) [157-00039](#) [770-1708](#) [770-1753-10](#) [770-1752](#) [SPNY-041-9](#)
[SF400-120X](#) [3719](#) [08582-0](#) [08386-0](#) [10431-0](#) [08359-0](#) [10620-0](#) [10345-0](#)