

THIS COPY IS PROVIDED ON A RESTRICTED BASIS AND IS NOT TO BE USED IN ANY WAY DETRIMENTAL TO THE INTERESTS OF PANDUIT CORP.

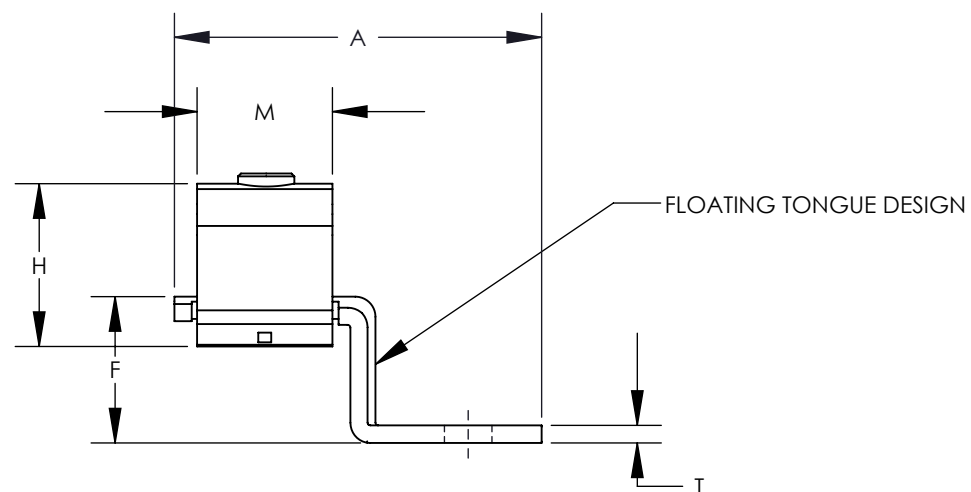
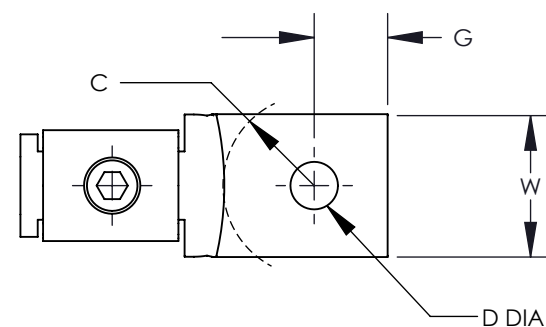
PART NUMBER	WIRE RANGE COPPER	CURRENT RATING (AMPS)	STUD SIZE IN	DIMENSIONS - IN [mm] ± .02 [0.5]									HEX KEY*
				A	D DIA	W	G	C	T	F	H	M	
CB25-18-CY	#14-#10	25	1/8	1.00 [25.4]	0.14 [3.6]	.31 [7.9]	.20 [5.1]	.28 [7.1]	.07 [1.8]	.26 [6.6]	0.36 [9.1]	0.28 [7.1]	SLOTTED SCREW
CB35-36-CY	#14-#6 (2) #10 AWG (2) #12 AWG (2) #14 AWG (1) #10 AWG WITH (1) #12 AWG (1) #12 AWG WITH (1) #14 AWG	50	3/16	1.24 [31.5]	0.19 [4.8]	.38 [9.7]	.22 [5.6]	.30 [7.6]	.07 [1.8]	.43 [10.9]	0.49 [12.4]	0.43 [10.9]	SLOTTED SCREW
CBA70-14SL-CY	#14-#4	70	1/4	1.31 [33.3]	0.26 [6.6]	.50 [12.7]	.25 [6.4]	.48 [12.2]	.08 [2.0]	.40 [10.1]	0.64 [16.3]	0.50 [12.7]	SLOTTED SCREW
CB70-14-CY	#8-#2 (1) #8 AWG WITH (1) #4 AWG (1) #8 AWG WITH (1) #6 AWG	90	1/4	1.55 [39.4]	0.26 [6.6]	.47 [11.9]	.25 [6.4]	.47 [11.9]	.08 [2.0]	.52 [13.2]	0.64 [16.3]	0.50 [12.7]	SLOTTED SCREW
CB125-14-QY	#6-1/0	125	1/4	1.98 [50.3]	0.26 [6.6]	.62 [15.7]	.42 [10.7]	.50 [12.7]	.11 [2.7]	.74 [18.7]	0.88 [22.4]	0.60 [15.2]	SLOTTED SCREW
CB175-38-QY	#4-3/0	175	3/8	2.20 [55.9]	0.39 [9.9]	.75 [19.0]	.43 [10.9]	.63 [16.0]	.12 [3.0]	.78 [19.8]	1.01 [25.7]	0.72 [18.3]	3/16
CB225-56HKR-Q	#2-4/0	225	5/16	2.55 [64.8]	0.33 [8.4]	.99 [25.1]	.51 [13.0]	.70 [17.8]	.12 [3.1]	1.02 [25.8]	1.13 [28.7]	0.94 [23.9]	7/32
CB300-38-QY	1/0-350	300	3/8	2.83 [71.9]	0.39 [9.9]	.99 [25.1]	.51 [13.0]	.70 [17.8]	.12 [3.1]	1.03 [26.2]	1.39 [35.3]	1.23 [31.2]	5/16
CB400-38-3Y	1/0-500	400	3/8	4.09 [103.9]	0.39 [9.9]	1.50 [38.0]	.90 [22.9]	1.15 [29.2]	.18 [4.5]	1.39 [35.3]	1.61 [40.9]	1.41 [35.8]	5/16
CB650-12-3Y	600-1000	650	1/2	4.84 [122.9]	0.59 [15.0]	2.00 [50.8]	1.12 [28.4]	1.07 [27.2]	.25 [6.4]	1.97 [50.0]	2.32 [58.9]	1.85 [47.0]	3/8

NOTES:

- MATERIAL:  
BODY - COPPER  
SCREW - STEEL, ZINC PLATED
- cULus LISTED FOR USE UP TO 600V & TEMPERATURE RATED 90°C
- RATED FOR USE WITH COPPER STRANDED CODE CONDUCTOR ONLY
- THESE PARTS ARE RoHS COMPLIANT
- SEE PACKAGING LABEL FOR TIGHTENING TORQUE INFORMATION
- PKG QTY:  
C = 100  
Q = 25  
3 = 3



\* HEX STYLE & SIZE MAY DIFFER FROM CHART. DIFFERENCE IN SIZE WILL NOT AFFECT FIT, FORM, OR FUNCTION OF PART



REV	DATE	BY	CHK	APR	DESCRIPTION	ECN
11	8/16	JHNU	JHNU	RGB	REVISED DIMENSION T FOR CB175-38-QY: .12 [3.0] WAS .16 [4.0]	N41663BA-C41663
10	8/16	JHNU	JHNU	RGB	ADDED CB225-56HKR-Q, REMOVED CB225-56-QY	N41663BA-C41663
09	11/13	JHNU	JHNU	RGB	REMOVED L DIMENSION REVISED W DIMENSION FOR CB70-14-CY: .47 WAS .50	N41663BA-C41663
08	2/13	JHNU	JHNU	RGB	REVISED TITLE BLOCK	N41663BA-C41663

TITLE <b>CB SERIES COPPER MECHANICAL LUGS CUSTOMER DRAWING</b>	
ITEM REVISION NAME N41663BA-C41663/11	<b>PANDUIT</b>
DATASET FILE NAME C41663/11.SLDDRW	
UNLESS OTHERWISE SPECIFIED, DIMENSIONAL TOLERANCES ARE: IN [mm]	
.X ± .XXX ± .XX ± ANGLES ±	MATERIAL SEE NOTES
THIRD ANGLE PROJECTION	DRAWING NUMBER C41663
DRAWN BY JHNU	DATE 3/06
CHK JHNU	SCALE NONE
SHEET 1 OF 1	SIZE B

## X-ON Electronics

Largest Supplier of Electrical and Electronic Components

*Click to view similar products for [Terminals](#) category:*

*Click to view products by [Panduit](#) manufacturer:*

Other Similar products are found below :

[HT-13-10](#) [71M-250-32-NB](#) [01-2065-1-0216](#) [00581P0075](#) [M10-10RX](#) [M10BCK](#) [60205-1](#) [604200-1](#) [60598-1-CUT-TAPE](#) [60617-1-C](#) [60873-1](#) [M14-516R/SK](#) [M14-6RSX](#) [M18-8FBX](#) [M18-8R/LX](#) [M18BCK](#) [61314-6-C](#) [61-S](#) [61-SN-A](#) [62-NBM-A](#) [63-S](#) [640179-1](#) [640917-2-CUT-TAPE](#) [6501550002](#) [66107-2-C](#) [696683-1](#) [696834-1](#) [696861-1](#) [696931-1](#) [696999-1](#) [M8-516RK](#) [M86700006](#) [MA250DMFMX-A](#) [701-2007](#) [701-2307](#) [701-7761-03](#) [70F-110-32-PB](#) [718-N-A](#) [71M-187-20-NBL](#) [71M-250-32-NBL](#) [72F-187-20-NBL](#) [72M-250-32-NBL](#) [7310](#) [73F-250-32](#) [73F-250-32-NL](#) [F14-10C](#) [F-1M](#) [751-250](#) [76650-5002](#) [76828-149](#)