



Mini-Com® Surface Mount Boxes

- Accept Mini-Com® Modules for STP and UTP, fiber optic, and audio/video, which snap in and out for easy moves, adds, and changes
- Mount easily with supplied mounting screws, adhesive tape, or optional magnet (CBM-X)
- Cable entry from side and rear knockouts and from opening in center of base
- CBXJ2 and CBX2 include built-in removable blank to add a second module
- Optional adhesive labels available



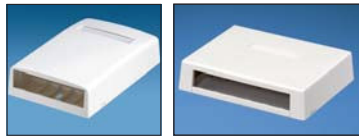
CBX1IW-A

CBXJ2IW-A



CBX2IW-AY

CBXC4IW-A



CBX4IW-AY

CBXD6IW-AY



CBX12IW-AY

Part Number	Part Description	Color†	Used with Pan-Way® Raceway	Std. Pkg. Qty.	Std. Ctn. Qty.
CBX1IW-A	Surface mount box accepts one Mini-Com® Module. Dimensions: 0.9"H x 1.01"W x 1.88"L (22.86mm x 25.65mm x 47.75mm). Rear knockout provides opening of 0.42"H x 0.26"W.	Off White	LD3, LDS3*, LDPH5	1	10
CBXJ2IW-A	Surface mount box accepts one or two Mini-Com® Modules; includes built-in removable blank to add a second module. Dimensions: 0.91"H x 1.77"W x 2.44"L (23.11mm x 44.96mm x 61.98mm). Knockout provides opening of 0.47"H x 0.36"W.	Off White	LD5, LDPH5*	1	10
CBX2IW-AY	Surface mount box accepts one or two Mini-Com® Modules; includes built-in removable blank to add a second module. Dimensions: 1.06"H x 1.95"W x 3.65"L (26.92mm x 49.53mm x 92.71mm).	Off White	LD3, LDPH3, LD5, LDPH5	1	10
CBXC4IW-A	Surface mount box accepts four Mini-Com® Modules. Dimensions: 0.91"H x 3.20"W x 3.20"L (23mm x 80mm x 80mm).	Off White	LDPH5	1	10
CBX4IW-AY	Surface mount box accepts four Mini-Com® Modules. Provides slots that accept cable ties for strain relief. Supplied with label holder/screw cover. Dimensions: 1.1"H x 2.9"W x 4.5"L (27.94mm x 73.66mm x 114.30mm).	Off White	LD3, LDPH3, LD5, LDPH5	1	10
CBXD6IW-AY	Surface mount box accepts six Mini-Com® Modules. Provides slots that accept cable ties for strain relief. Provides bend radius control. Supplied with label holder/screw cover. Dimensions: 1.04"H x 4.95"W x 3.79"L (26.42mm x 125.73mm x 96.27mm).	Off White	LD3, LD5, LD10	1	10
CBX12IW-AY	Surface mount box holds up to twelve Mini-Com® Modules, six on each side. Supplied with mounting screws, adhesive backing, and label holder/screw cover. Dimensions: 1.035"H x 5.71"W x 5.45"L (26mm x 145mm x 138mm).	Off White	LD5, LD10	1	10

†For other colors replace suffix IW (Off White) with EI (Electric Ivory), WH (White), IG (International Gray), or BL (Black).

*Raceway does not enter box.

Surface mount boxes do not accept icons.

Component Labels for Mini-Com® Surface Mount Boxes



Suggested Label Solutions for TIA/EIA-606-A Compliance

Box Part Number	Laser/Ink Jet Desktop Printer Label	TDP43ME Thermal Transfer Desktop Printer Label	PanTher™ LS8E Hand-Held Printer Label	Cougar™ LS9 Hand-Held Printer Label
CBX1**-A	C061X030FJJ	C061X030YPT	C061X030FJC	T031X000FJC-BK
CBXJ2**-A	C125X030FJJ	C125X030YPT	C125X030FJC	
CBX2**-AY				
CBXC4**-A	C252X030FJJ	C252X030YPT	C252X030FJC	
CBX4**-AY				
CBXD6**-AY	C379X030FJJ	C379X030YPT	C379X030FJC	
CBX12**-AY				

For complete labeling solutions and product information, reference charts on pages O.1 – O.22 of SA-NCCB51.

X-ON Electronics

Largest Supplier of Electrical and Electronic Components

Click to view similar products for [Wire Ducting & Raceways](#) category:

Click to view products by [Panduit](#) manufacturer:

Other Similar products are found below :

[800A-LB](#) [801I-LSP](#) [802A-ECSP](#) [802I-ICSP](#) [923223-000](#) [PRAF6WH-X](#) [A0405538](#) [1301150342](#) [1301160034](#) [1301170070](#) [1301180011](#)
[1301230083](#) [1301230153](#) [1301240273](#) [1301250006](#) [1302261238](#) [1302261321](#) [1302262552](#) [1302263103](#) [1302263178](#) [1302263259](#)
[1302263816](#) [1302263860](#) [1302264375](#) [1302264390](#) [1301150343](#) [1301160030](#) [1301170050](#) [1301170051](#) [1301170061](#) [1301180013](#)
[1301230086](#) [1301230130](#) [1301240054](#) [1302260055](#) [1302260376](#) [1302261343](#) [1302261344](#) [1302262674](#) [1302263095](#) [1302263166](#)
[1302263209](#) [1302263513](#) [1302263851](#) [1302263870](#) [1302264137](#) [1302264218](#) [DD1/J](#) [AX101472](#) [AX102007](#)