

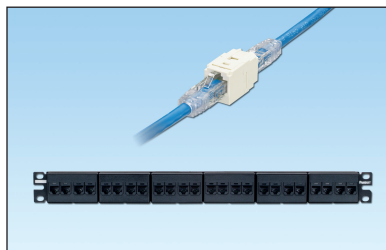
# Mini-Com® TX6A™ 10Gig™ UTP Coupler Module and Patch Panel

# PANDUIT®

SPECIFICATION SHEET

## specifications

Category 6A/Class E<sub>A</sub>, 8-position, female to female, UTP coupler module shall provide easy plug and play pass through connectivity. Coupler module shall act as one connecting hardware component in the channel. Coupler modules shall be available individually or installed in a 24-port flat patch panel. Couplers shall be compatible with 6 or 8-position RJ45 UTP patch cords with T568A and T568B wiring schemes.



## technical information

|   |  |
|---|--|
| <b>Category 6A/Class E<sub>A</sub> channel performance:</b> | Exceeds channel requirements of ANSI/TIA-568-C.2 Category 6A and ISO11801 Class E <sub>A</sub> standards for supporting 10GBASE-T transmission over twisted pair cabling systems in a 4-connector configuration up to 100 meters<br>One coupler can be used per channel while maintaining Category 6A/Class E <sub>A</sub> performance |
| <b>FCC and ANSI/TIA compliance:</b>                         | Meets ANSI/TIA-1096-A; contacts plated with 50 microinches of gold for superior performance  |
| <b>IEC compliance:</b>                                      | Meets IEC 60603-7  |
| <b>PoE compliance:</b>                                      | Meets IEEE 802.3af and IEEE 802.3at for PoE applications   |
| <b>RoHS compliance:</b>                                     | Compliant  |
| <b>c(UL)US rated:</b>                                       | UL 1863, CSA Standard C22.2  |

## key features and benefits

|                                      |  |
|--------------------------------------|--|
| <b>100% performance tested</b>       | Confidence that each coupler will deliver the critical electrical performance requirements   |
| <b>Modular</b>                       | Couplers snap in and out of all Mini-Com® Faceplates, Modular Patch Panels and industrial bulkheads for easy moves, adds and changes |
| <b>RJ45 interface</b>                | Industry standard interface provides a quick and easy plug and play connection to RJ45 patch cords; backwards compatible             |
| <b>Identification</b>                | Can be clearly identified with optional labels and icons for port identification   |
| <b>Populated patch panel version</b> | Factory installed 24-port patch panel mounts to standard EIA 19" or 23" racks for greater system flexibility                         |
| <b>Block out device (optional)</b>   | Provides a simple and secure method to control access to data ports while not in use   |

## applications

Mini-Com® TX6A™ 10Gig™ UTP Coupler Modules and Patch Panels are a component of the TX6A™ 10Gig™ UTP Copper Cabling System. This end-to-end system is interoperable and backwards compatible, providing design flexibility to protect network investments well into the future. Couplers are designed to perform as a single connector in the channel. One coupler can be used per channel while maintaining Category 6A/Class E<sub>A</sub> performance. Couplers are a reliable, modular solution, ideal when setting up networks in a testing environment or during a planned system upgrade.

With certified performance to the ANSI/TIA-568-C.2 Category 6A and ISO 11801 Class E<sub>A</sub> standards, this system will support the following applications:

- Ethernet 10BASE-T, 100BASE-T (FastEthernet), 1000BASE-T (Gigabit Ethernet)
- 155 Mb/s ATM, 622 Mb/s ATM, 1.2 Gb/s ATM
- Token Ring 4/16
- Digital video and broadband/baseband analog video
- Voice over Internet Protocol (VoIP)

[www.panduit.com](http://www.panduit.com)

**TX6A™ 10Gig® UTP  
Copper Cabling System**

**Mini-Com® TX6A™ UTP  
Copper Modules**

**Coupler Module:** CC6X88†

**Mini-Com® TX6A™ 10Gig® UTP  
Coupler Patch Panel**

**24-port, 1 RU:** CP246X88BL

**TX6A™ 10Gig® UTP Patch Cords  
with MaTriX Technology**

**CM (foot lengths):** UTP6A^

**CM (meter lengths):** UTP6A^^M

**TX6A-SD™ 10Gig® UTP Patch  
Cords with MaTriX Technology**

**CM (ft lengths):** UTP6ASD^BU

**CM (m lengths):** UTP6ASD^^MBU

**LSZH (m lengths):** UTP6ASDL^^M

**Mini-Com® Angled Modular  
Patch Panels**

**24-port, 1 RU:** CPPA24FMWBLY

**48-port, 2 RU:** CPPA48FMWBLY

**72-port, 2 RU:** CPPLA72WBLY

**Mini-Com® Flat Modular  
Patch Panels**

**24-port, 1 RU:** CPP24FMWBLY

**48-port, 2 RU:** CPP48HDWBLY

**48-port, 1 RU:** CPP48FMWBLY

**72-port, 2 RU:** CPP72FMWBLY

### Tools and Accessories

**Jack module termination tool:** TGJT or EGJT

**Wire snipping tool:** CWST

**Wire stripping tool:** CJAST

**Clear dust cap:** MDC-C

**Blockout device:** PSL-DCJB-^^^

**Phone icons:** CIPIW-C++

**Data icons:** CIDIW-C++

‡ For additional colors, add suffix: BL (Black), IW (Off White), BU (Blue), RD (Red), GR (Green), OR (Orange), IG (International Gray), or YL (Yellow).

^ For lengths 3 to 20 feet (one foot increments) and 25, 30, 35, 40 feet, change the length designation in the part number to the desired length. For standard cable colors other than Off White, add suffix BL (Black), BU (Blue), RD (Red), YL (Yellow), GR (Green), OR (Orange) or VL (Violet). For example, UTP6A15BU = blue, 15-foot patch cord.

^^ For lengths 1, 1.5, 2 to 7 (one meter increments), 10, 15, 20 meters, change the length designation in the part number to the desired length. For standard cable colors other than Off White, add suffix BL (Black), BU (Blue), RD (Red), YL (Yellow), GR (Green), OR (Orange) or VL (Violet). LSZH patch cable available in Off White or BU (Blue). For example, UTP5ASD5MBU = blue, 5-meter patch cord.

^^^To designate color other than Red, add suffix BL (Black), BU (Blue), YL (Yellow), GR (Green), OR (Orange), IW (Off White) or IG (International Gray) at the end of the part number. 10/package.

++To designate color other than IW (Off White), replace IW with EI (Electric Ivory), IG (International Gray), BL (Black), BU (Blue), RD (Red), YL (Yellow), GR (Green), OR (Orange) or VL (Violet) in the part number. 100/package.

# Mini-Com® TX6A™ 10Gig™ UTP Coupler Module and Patch Panel

## Test Results

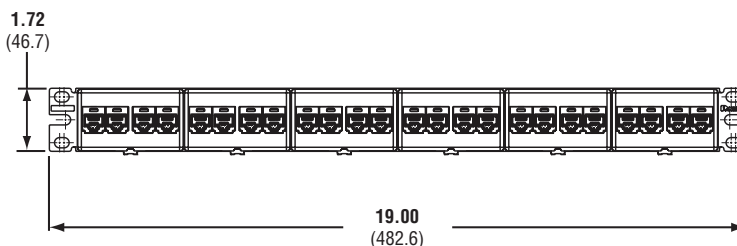
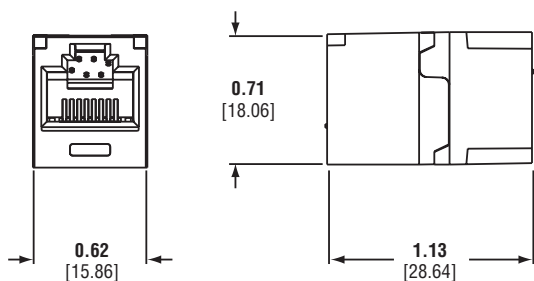
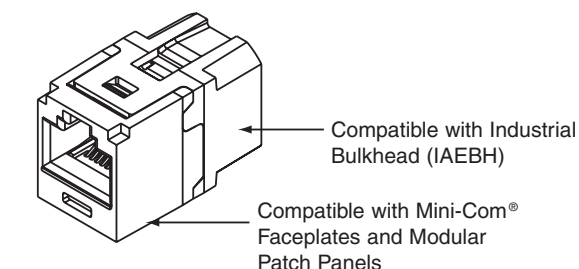
| Mechanical Test           | Test Method | Measurement                       | Required Performance |
|---------------------------|-------------|-----------------------------------|----------------------|
| <b>Normal Force</b>       | —           | Load (grams)                      | > 100                |
| <b>Vibration</b>          | IEC 512-6d  | Circuit Resistance Change (mOhms) | < 40                 |
| <b>Shock</b>              | IEC 512-6c  | Contact Disturbance (microsecond) | < 5                  |
| <b>Durability</b>         | IEC 512-9a  | Circuit Resistance Change (mOhms) | < 40                 |
| <b>Mating/Unmating</b>    | IEC 512-13b | Mating Force (N)                  | < 20                 |
|                           |             | Unmating Force (N)                | < 20                 |
| <b>Termination Cycles</b> | IEC 352     | Number of Cycles                  | >20                  |

| Mechanical Test                     | Test Method | Measurement        | Required Performance |
|-------------------------------------|-------------|--------------------|----------------------|
| <b>Low Level Circuit Resistance</b> | IEC 512-2a  | Resistance (mOhms) | < 20                 |
| <b>Dielectric Withstand Voltage</b> | IEC 512-4a  | 1000VAC, 1 minute  | Passed               |
| <b>Insulation Resistance</b>        | IEC 512-3a  | Resistance (MOhms) | > 500                |

| Mechanical Test                    | Test Method | Measurement                       | Required Performance |
|------------------------------------|-------------|-----------------------------------|----------------------|
| <b>Temperature Life</b>            | IEC 512-9b  | Circuit Resistance Change (mOhms) | < 40                 |
| <b>Humidity</b>                    | IEC 512-11c | Circuit Resistance Change (mOhms) | < 40                 |
| <b>Thermal Shock</b>               | IEC 512-11d | Circuit Resistance Change (mOhms) | < 40                 |
| <b>Climactic Sequence</b>          | IEC 512-11a | Circuit Resistance Change (mOhms) | < 40                 |
| <b>Flowing Mixed Gas Corrosion</b> | IEC 512-11g | Circuit Resistance Change (mOhms) | < 40                 |

## Mini-Com® TX6A™ 10Gig™ UTP Coupler Module

## Mini-Com® 24-Port Category 6A Coupler Patch Panel



Dimensions are in inches [Dimensions in brackets are metric]

### WORLDWIDE SUBSIDIARIES AND SALES OFFICES

PANDUIT CANADA  
Markham, Ontario  
cs-cdn@panduit.com  
Phone: 800.777.3300

PANDUIT EUROPE LTD.  
London, UK  
cs-emea@panduit.com  
Phone: 44.20.8601.7200

PANDUIT SINGAPORE PTE. LTD.  
Republic of Singapore  
cs-ap@panduit.com  
Phone: 65.6305.7575

PANDUIT JAPAN  
Tokyo, Japan  
cs-japan@panduit.com  
Phone: 81.3.6863.6000

PANDUIT LATIN AMERICA  
Guadalajara, Mexico  
cs-la@panduit.com  
Phone: 52.33.3777.6000

PANDUIT AUSTRALIA PTY. LTD.  
Victoria, Australia  
cs-aus@panduit.com  
Phone: 61.3.9794.9020

For a copy of Panduit product warranties, log on to [www.panduit.com/warranty](http://www.panduit.com/warranty)

For more information

Visit us at [www.panduit.com](http://www.panduit.com)

Contact Customer Service by email: [cs@panduit.com](mailto:cs@panduit.com)  
or by phone: 800.777.3300 and reference COSP251

©2015 Panduit Corp.  
ALL RIGHTS RESERVED.  
COSP251--WW-ENG  
4/2015

## X-ON Electronics

Largest Supplier of Electrical and Electronic Components

*Click to view similar products for [Modular Connectors](#) / [Ethernet Connectors](#) category:*

*Click to view products by [Panduit](#) manufacturer:*

Other Similar products are found below :

[RJE231881317T](#) [MP1010RX-1000](#) [MP44RX-1000](#) [GAX-3-66](#) [GAX-8-62](#) [93606-0253](#) [GD-A-44](#) [GDCX-PA-66-50](#) [GDCX-PN-64](#) [GDCX-PN-66](#) [GDCX-PN-66-50](#) [GDLX-A-66](#) [GDLX-A-88](#) [GDLX-N-66](#) [GDLX-S-88K](#) [GDTX-S-88-50](#) [GDX-PA-1010](#) [GLX-N-1010M-BLK](#) [GLX-N-44M](#) [GLX-S-88M-BLK](#) [GMX-N-1010](#) [GMX-S-1010](#) [GMX-S-66](#) [GMX-SMT2-N-1010](#) [GMX-SMT2-N-64-50](#) [GMX-SMT2-S6-88](#) [GMX-SMT4-N-88](#) [GPX-2-64](#) [GRT1-BT1-5](#) [GSGX-N-2-88](#) [GSX-NS2-88-3.05](#) [GSX-NS2-88-3.05-50](#) [GSX-NS-88-3.05-30](#) [GSX-NS-88-3.05-50](#) [GSX-NS-88-3.68](#) [1-1775629-2](#) [GWLX-S-88-GR](#) [GWLX-S9-88-YG](#) [1300500326](#) [1300500227](#) [1300530003](#) [1300570002](#) [1324640-4](#) [RJ11FTVC2G](#) [RJ11FTVC2N](#) [RJFTVX2SA1G](#) [132764-001](#) [1400000](#) [1413176](#) [1413235](#)