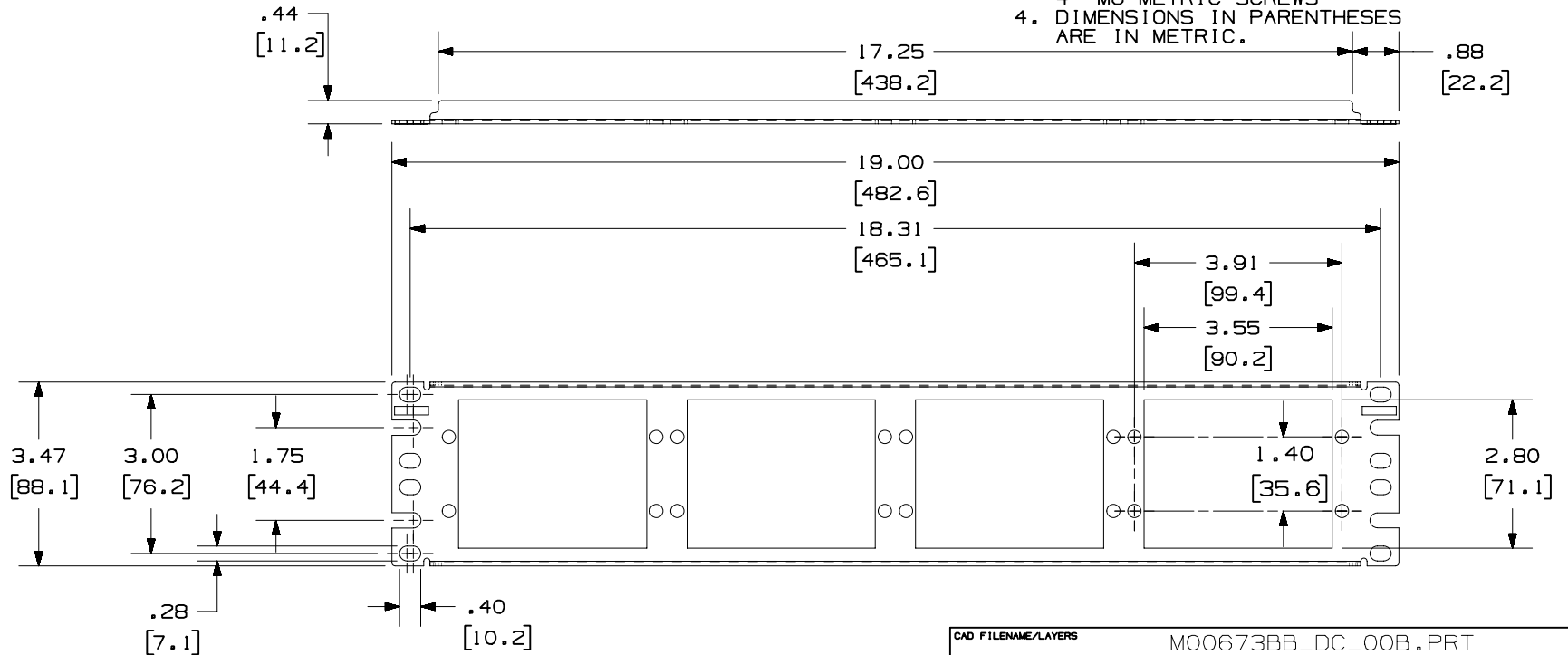


THIS COPY IS PROVIDED ON A RESTRICTED BASIS AND IS NOT TO BE USED IN ANY WAY DETRIMENTAL TO THE INTERESTS OF PANDUIT CORP.

PANDUIT PART NO. *	DESCRIPTION	WEIGHT
CFAPPBL2	2 RACK UNIT - FIBER ADAPTER PATCH PANEL	2.0 LB (909 g)

- NOTES:
- SEE CURRENT CATALOG FOR COMPLETE LIST OF PARTS APPLICABLE FOR USE WITH THIS PART.
 - THE PATCH PANEL IS DESIGNED FOR MOUNTING TO FMTDW48 TRAY OR 19" UNIVERSAL RACKS.
 - PARTS INCLUDED:
1- PATCH PANEL
4- 12-24 SCREWS
4- M6 METRIC SCREWS
 - DIMENSIONS IN PARENTHESES ARE IN METRIC.



CAD FILENAME/LAYERS M00673BB_DC_00B.PRT

REV	DATE	BY	CHK	DESCRIPTION	ECN	R	CUST	SUP
1	5-2-02	JDWE		A. REVISED NOTE 3- ADDED METRIC SCREWS	00673-17			
R	6-30-00	BAS	AFW	RELEASED TO PRODUCTION	00673-17		AFW	

PANDUIT CORP. TINLEY PARK, ILLINOIS

2 RACK UNIT - FIBER ADAPTER PATCH PANEL (CFAPPBL2) CUSTOMER DRAWING

UNLESS OTHERWISE SPECIFIED, DIMENSIONAL TOLERANCES ARE:
(.X) ±.13(3.3) (.XXX) ±(.XX) ±.03(.8) ANGLES ±

UNLESS OTHERWISE SPECIFIED, ALL DIMENSIONS ARE GIVEN IN INCHES, THIRD ANGLE PROJECTION.

DRAWN BY: BAS
DATE: 6-30-00
CHK'D: AFW

MAT'L: 16 GA. C.R.S.

SCALE: NONE

DRAWING NO. 00673-17
DWG SIZE: A

X-ON Electronics

Largest Supplier of Electrical and Electronic Components

Click to view similar products for [Fibre Optic Connectors](#) category:

Click to view products by [Panduit](#) manufacturer:

Other Similar products are found below :

[0004700001](#) [6100-R](#) [6313](#) [F709034706](#) [F709722200](#) [F709730000](#) [F718183204](#) [F727403500](#) [F727752800](#) [8119](#) [9440F20-27S-190](#) [944-120-6001](#) [9441F10SL-3S](#) [9444W28-21S](#) [9444W36-10S](#) [9446F10SL-4S](#) [9446W20-16S](#) [953-101-5310-P](#) [954-101-57202B](#) [A0270169](#) [12-9122](#) [12-5702](#) [AX101713](#) [AX102420](#) [AX103923](#) [AX104024](#) [AX104193](#) [AX104230](#) [AX104562](#) [AX105203-B25](#) [AX105205-S1](#) [EHSC2M](#) [181-011-126](#) [181-011-S](#) [181-057-126](#) [HRFC-R2\(40\)](#) [NKSOPBUY](#) [20500002116](#) [2064996-1](#) [20800001065](#) [2170](#) [9132](#) [2612](#) [2620](#) [9291](#) [9440F16-10S](#) [9440F20-18S](#) [9446F16-10S-190](#) [953-106-50231](#) [953-120-5003](#)