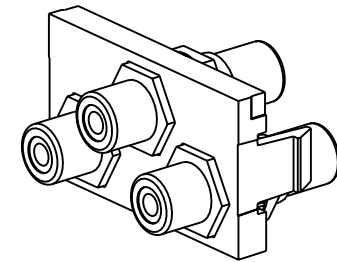
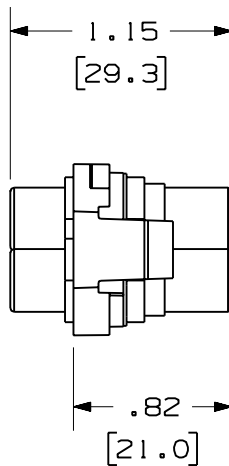
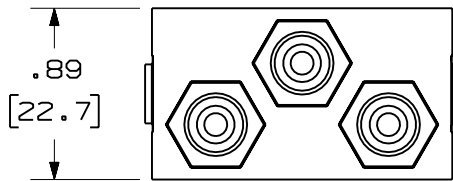
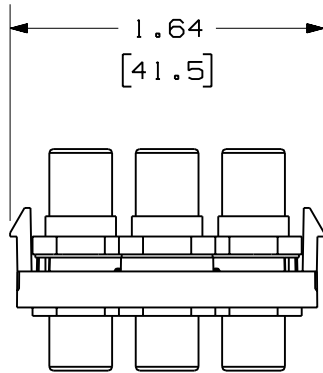


THIS COPY IS PROVIDED ON A RESTRICTED BASIS AND IS NOT TO BE USED IN ANY WAY DETRIMENTAL TO THE INTERESTS OF PANDUIT CORP.




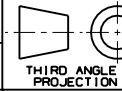
PANDUIT P/N	WEIGHT
CHR3WYR**	.78 LB/10 PCS
CHR3RGB**	(353.5 g/10 PCS)

NOTES:

- SEE CURRENT CATALOG FOR ADDITIONAL PART NUMBER SUFFIXES TO INDICATE COLOR AND OR PACKAGE QUANTITY.
- SEE CATALOG FOR COMPLETE LIST OF PARTS APPLICABLE FOR USE WITH THIS PART.
- DIMENSIONS IN PARENTHESES ARE IN METRIC.
- PART INCLUDES:
 CHR3WYR** -
 1- 1/3 INSERT BASE
 1- WHITE RCA COUPLER (ASSEMBLED)
 1- YELLOW RCA COUPLER (ASSEMBLED)
 1- RED RCA COUPLER (ASSEMBLED)
 CHR3RGB** -
 1- 1/3 INSERT BASE
 1- RED RCA COUPLER (ASSEMBLED)
 1- GREEN RCA COUPLER (ASSEMBLED)
 1- BLUE RCA COUPLER (ASSEMBLED)

MODEL FILENAME	MO2190AC_13RD_RCAX3_01.PRT	SIZE	A
DRAWING FILENAME	MO2190AC_DC_01A.PRT		

1/3 INSERT WITH 3 RCA COUPLERS
CUSTOMER DRAWING

 PANDUIT ™ CORP. TINLEY PARK, ILL 60477	I.I. NUMBER	N/A
	PRODUCT SPEC	N/A
 THIRD ANGLE PROJECTION	WORK INSTRUCTION	N/A
	SCALE	NONE
DRAWN BY JsP	REVIEW DRAWING NUMBERS	PART NO. CHR3WYR** CHR3RGB**
DATE 4-4-06	MATERIAL: INSERT- ABS COUPLER- BRASS	DRAWING NO. 02190-10
CHK'D		

REV	DATE	BY	CHK	DESCRIPTION	ECN	R	CUST	SUP	OTH
R	4-4-06	JsP		RELEASED TO PRODUCTION	02190-10				

X-ON Electronics

Largest Supplier of Electrical and Electronic Components

Click to view similar products for [RCA Phono Connectors](#) category:

Click to view products by [Panduit](#) manufacturer:

Other Similar products are found below :

[17PP052](#) [NYS352AG](#) [333-0000](#) [330F3](#) [336AX](#) [342-0000](#) [AP-165](#) [598](#) [AX101880](#) [716SNS1P11PL-25](#) [585](#) [330-0000](#) [335-0000](#) [588](#)
[ACJD-BLK](#) [NF2D-2](#) [NF2D-9](#) [NF2D-B-0](#) [NF2D-B-4](#) [299](#) [ACJD-RED](#) [ACJD-WHT](#) [PJRAS3X1S01X](#) [RCJ-2244](#) [3507](#) [413-0100](#) [431-0500](#)
[331-0000](#) [561](#) [NF2D-B-2](#) [NF2D-B-6](#) [566](#) [571](#) [572](#) [574](#) [580](#) [581](#) [583](#) [586](#) [587](#) [589](#) [598](#) [NYS354](#) [NYS372P](#) [NYS373-2-U](#) [ACJD-GRN](#)
[936](#) [PJRN1X1U03AUX](#) [PJRAS1X3S02X](#) [937](#)