

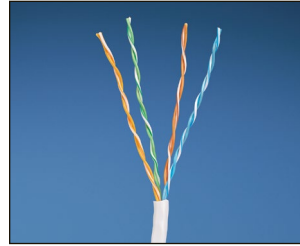
TX5500™ U/UTP Copper Cable

PANDUIT®

SPECIFICATION SHEET

specifications

Category 5e cable shall exceed IEC 61156-5 and ANSI/TIA-568-C.2 Category 5e component standards. The conductors shall be 24 AWG construction with HDPE insulation. The copper conductors shall be twisted in pairs and all four pairs shall be covered by a flame-retardant PVC jacket.



technical information

Electrical performance:	Certified channel performance in a 4-connector configuration up to 100 meters and exceeds the requirements of ISO 11801 Class D and ANSI/TIA-568-C.2 Category 5e ratified standards at swept frequencies up to 100 MHz Certified component performance up to 100 meters and exceeds the component requirement of the IEC 61156-5 and ANSI/TIA-568-C.2 Category 5e ratified standards at swept frequencies up to 100 MHz
Conductors/insulators:	24 AWG solid copper insulated with HDPE
Certification:	ANATEL 2488-09-6246
Flame rating:	CMR — UL 1666
PoE compliance:	Meets IEEE 802.3af and IEEE 802.3at for PoE applications
Installation tension:	110 N (25 lbf) maximum
Temperature rating:	0°C to 50°C (32°F to 122°F) during installation -20°C to 75°C (-4°F to 167°F) during operation
Cable jacket:	Flame-retardant PVC
Cable diameter:	4.9mm (0.193 in.) nominal
Cable weight:	8.6 kg/305m (19 lbs./1000 ft.)
Packaging:	305m (1000 ft.) in an easy payout carton Package tested to ISTA Procedure 1A

key features and benefits

Third party tested	Cable has been tested as part of the TX5500™ U/UTP Copper Cabling System by an independent laboratory and complies with the electrical channel requirements of the following standards: ISO 11801 Class D and ANSI/TIA-568-C.2
Descending length cable markings	Easy identification of remaining cable reduces installation time and cable scrap
Tested beyond the standards	Cable has been characterized to 450 MHz, 350 MHz above the standard
Easy payout carton	Improves installation time and prevents tangling

applications

TX5500™ U/UTP Cable is a component of the Panduit® TX5500™ Copper Cabling System. The end-to-end system provides Gigabit Ethernet performance with usable bandwidth beyond 100 MHz. With certified performance to the ANSI/TIA-568-C.2 Category 5e and ISO 11801 Class D standards, this system will support the following applications:

- Ethernet 10BASE-T, 100BASE-T (Fast Ethernet), 1000BASE-T (Gigabit Ethernet)
- 155 Mb/s ATM, 622 Mb/s ATM
- Token Ring 4/16

www.panduit.com

TX5500™ U/UTP Copper Cabling System

TX5500™ UTP Copper Cable

CMR: PUR5504*Y

Mini-Com® TX5e™ PLUS UTP Jack Module

Jack module: CJ5E88TG**

TX5e™ UTP Patch Cords – CM

Meters: UTPCH1^MY

Feet: UTPCH3^MY

DP5e™ Angled Punchdown Patch Panels

24-port, 1 RU: DPA245E88TGY

48-port, 2 RU: DPA485E88TGY

DP5e™ Flat Punchdown Patch Panels

12-port, 1 RU: DP125E88TGY

24-port, 1 RU: DP245E88TGY

48-port, 2 RU: DP485E88TGY

Mini-Com® Angled Flush Mount Modular Patch Panels

24-port, 1 RU: CPPA24FMWBLY

48-port, 2 RU: CPPA48FMWBLY

Mini-Com® Flat Flush Mount Modular Patch Panels

24-port, 1 RU: CPP24FMWBLY

48-port, 2 RU: CPP48FMWBLY

Termination and Cable Prep Tools

Termination tools: EGJT or TGJT

Wire stripping tool: CWST

Wire stripping tool: CCAST

*To designate color, add suffix BU (Blue), IG (International Gray), WH (White) or YL (Yellow) prior to the Y.

**To designate color, add suffix AW (Arctic White), IW (Off White), EI (Electric Ivory), IG (International Gray), WH (White), BL (Black), OR (Orange), RD (Red), BU (Blue), GR (Green), YL (Yellow), or VL (Violet).

^For lengths 1 to 10 meters (increments of one meter) and 0.5, 1.5, 2.5, 15, 20 meters, change the length designation in the part number to desired length. For standard colors, add suffix BU (Blue), GR (Green), RD (Red), YL (Yellow), IW (Off White) before Y at the end of the part number. For example, the part number for a blue, 5-meter patch cord is UTPCH5MBUY.

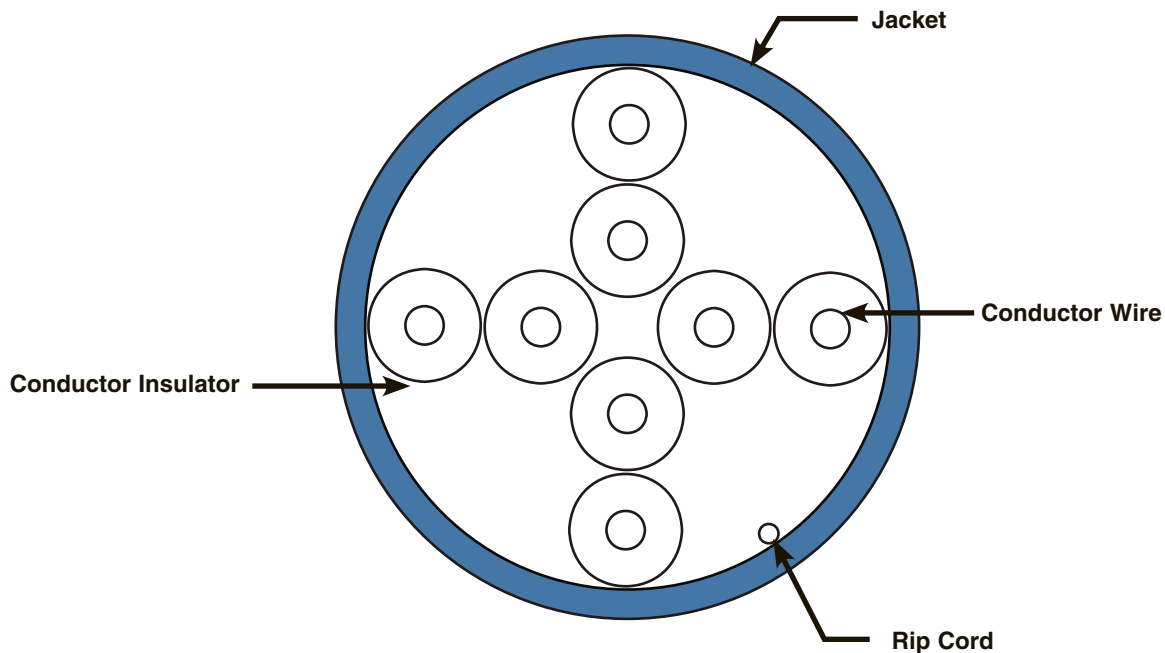
^^For lengths 1 to 20 feet (increments of one foot) and 25, 30, 35, 40 feet, change the length designation in the part number to desired length. For standard cable colors, add suffix BU (Blue), GR (Green), RD (Red), YL (Yellow), IW (Off White) before Y at the end of the part number. For example, the part number for a blue, 5-foot patch cord is UTPCH5BUY.

TX5500™ U/UTP Copper Cable

additional specifications

Mechanical Test	
<i>Ultimate Breaking Strength</i>	>400 N (90 lbf).
<i>Minimum Bend Radius</i>	4 x cable diameter
Electrical Test	
<i>Nominal Velocity of Propagation (NVP)</i>	67%

cable construction



WORLDWIDE SUBSIDIARIES AND SALES OFFICES

PANDUIT CANADA
Markham, Ontario
cs-cdn@panduit.com
Phone: 800.777.3300

PANDUIT EUROPE LTD.
London, UK
cs-emea@panduit.com
Phone: 44.20.8601.7200

PANDUIT SINGAPORE PTE. LTD.
Republic of Singapore
cs-ap@panduit.com
Phone: 65.6305.7575

PANDUIT JAPAN
Tokyo, Japan
cs-japan@panduit.com
Phone: 81.3.6863.6000

PANDUIT LATIN AMERICA
Guadalajara, Mexico
cs-la@panduit.com
Phone: 52.33.3777.6000

PANDUIT AUSTRALIA PTY. LTD.
Victoria, Australia
cs-aus@panduit.com
Phone: 61.3.9794.9020

For a copy of Panduit product warranties, log on to www.panduit.com/warranty

For more information

Visit us at www.panduit.com

Contact Customer Service by email: cs@panduit.com
or by phone: 800.777.3300

PANDUIT®

© 2016 Panduit Corp.
ALL RIGHTS RESERVED.
COSP393--WW-ENG
2016-06-09

X-ON Electronics

Largest Supplier of Electrical and Electronic Components

Click to view similar products for [Modular Connectors / Ethernet Connectors](#) category:

Click to view products by [Panduit](#) manufacturer:

Other Similar products are found below :

[8949-H88/06BLKA/SN](#) [74441-0010/BKN](#) [MP1010RX-1000](#) [MP44RX-1000](#) [PHP-6P6C-5](#) [GAX-3-66](#) [GAX-8-62](#) [GDCX-PA-66-50](#) [GDCX-PN-64](#) [GDCX-PN-66](#) [GDCX-PN-66-50](#) [GDLX-A-66](#) [GDLX-N-66](#) [GDLX-S-66](#) [GDLX-S-88K](#) [GDTX-S-88-50](#) [GDX-PA-1010](#) [GLX-N-1010M-BLK](#) [GLX-S-88M-BLK](#) [GMX-N-1010](#) [GMX-S-1010](#) [GMX-S-66](#) [GMX-SMT4-N-88](#) [GPX-2-64](#) [GSGX-N-2-88](#) [GSGX-N-4-88](#) [GSX-NS2-88-3.05](#) [GSX-NS2-88-3.05-50](#) [GSX-NS-88-3.05-50](#) [PT-108A-8C-UL](#) [PT-J951-8C](#) [PTS-J531-8CS-50UL](#) [1-1775629-2](#) [A-2014-0-4](#) [GWLX-S-88-GR](#) [GWLX-S9-88-YG](#) [DC-1021-8-WH-6](#) [1300530003](#) [1324640-4](#) [RJ11FTVC2G](#) [RJ11FTVC2N](#) [RJFTVX2SA1G](#) [132764-001](#) [1413235](#) [MP88X-1000](#) [MPS88RX-5000](#) [E5288-S000K3-L](#) [E5908-15A242-L](#) [155302-001](#) [AX100653](#)