

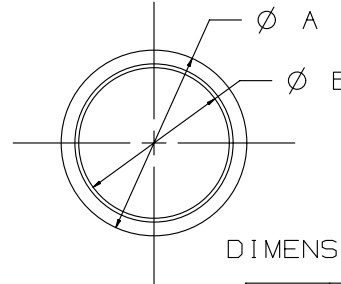
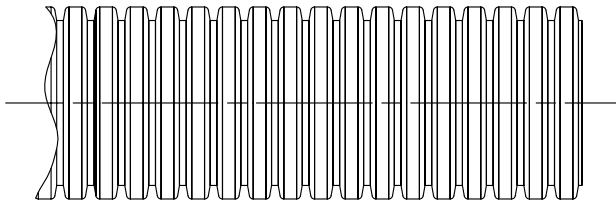
THIS COPY IS PROVIDED ON A RESTRICTED BASIS AND IS NOT TO BE USED IN ANY WAY DETRIMENTAL TO THE INTERESTS OF PANDUIT CORP.

MATERIAL: NYLON 6

MATERIAL: POLYETHYLENE

PART NO.	DIMENSIONS		WALL THICKNESS	WEIGHT lbs/100 ft (g)/100 ft
	A	B		
CLTS25N *	0.398 (10.10)	0.284 (7.20)	0.007 - 0.020 (0.18 - 0.51)	0.81 (370.0)
CLTS35N *	0.504 (12.79)	0.350 (8.88)	0.006 - 0.025 (0.15 - 0.64)	1.28 (580.0)
CLTS38N *	0.524 (13.30)	0.394 (9.99)	0.007 - 0.025 (0.18 - 0.64)	1.47 (670.0)
CLTS50N *	0.654 (16.60)	0.512 (12.99)	0.007 - 0.020 (0.18 - 0.51)	1.98 (900.0)
CLTS62N *	0.847 (21.05)	0.664 (16.85)	0.007 - 0.020 (0.18 - 0.51)	2.39 (1085.0)
CLTS75N *	0.941 (23.90)	0.767 (19.47)	0.007 - 0.020 (0.18 - 0.51)	2.75 (1250.0)
CLTS100N *	1.103 (28.00)	0.912 (23.15)	0.008 - 0.030 (0.20 - 0.76)	3.70 (1680.0)
CLTS125N *	1.536 (39.00)	1.278 (32.45)	0.008 - 0.030 (0.20 - 0.76)	6.03 (2740.0)
CLTS150N *	1.851 (47.00)	1.575 (39.99)	0.010 - 0.032 (0.25 - 0.81)	7.39 (3360.0)

PART NO.	DIMENSIONS		WALL THICKNESS	WEIGHT lbs/100 ft (g)/100 ft
	A	B		
CLTS25F *	0.398 (10.10)	0.284 (7.20)	0.007 - 0.020 (0.18 - 0.51)	0.75 (340.0)
CLTS35F *	0.504 (12.79)	0.350 (8.88)	0.006 - 0.025 (0.15 - 0.64)	1.12 (510.0)
CLTS38F *	0.524 (13.30)	0.394 (9.99)	0.007 - 0.025 (0.18 - 0.64)	1.38 (625.0)
CLTS50F *	0.654 (16.60)	0.512 (12.99)	0.007 - 0.020 (0.18 - 0.51)	1.85 (840.0)
CLTS62F *	0.847 (21.05)	0.664 (16.85)	0.007 - 0.020 (0.18 - 0.51)	2.29 (1040.0)
CLTS75F *	0.941 (23.90)	0.767 (19.47)	0.007 - 0.020 (0.18 - 0.51)	2.64 (1200.0)
CLTS100F *	1.103 (28.00)	0.912 (23.15)	0.008 - 0.030 (0.20 - 0.76)	3.52 (1600.0)
CLTS125F *	1.536 (39.00)	1.278 (32.45)	0.008 - 0.030 (0.20 - 0.76)	5.77 (2620.0)
CLTS150F *	1.851 (47.00)	1.575 (39.99)	0.010 - 0.032 (0.25 - 0.81)	6.16 (2800.0)



DIMENSIONS IN PARENTHESES ARE IN METRIC UNITS

NOTES:

* 1. SEE www.panduit.com FOR PART NUMBER SUFFIX DESIGNATION FOR PACKAGE SIZE, PART MATERIAL AND PART COLOR.

2. FOR ROLL SIZES LARGER THAN 10 FEET, SPLICES MAY OCCUR.

TITLE CLTS()N, CLTS()F - (NON-SLIT) CORRUGATED TUBING		CUSTOMER DRAWING	
ITEM REVISION NAME G03597B0/01		PANDUIT	
DATASET FILE NAME G03597B0/01 - GB0222BD_REV08			
UNLESS OTHERWISE SPECIFIED, DIMENSIONAL TOLERANCES ARE: IN (mm)		MATERIAL: SEE ABOVE	
.X ± .XX ±		.XXX ± .050 ANGLES ±	
DRAWN BY CMR		DRAWING NUMBER: GB0222BD	
DATE 7-5-95		THIRD ANGLE PROJECTION	
CHK VJS		SCALE NONE	
APR DESCRIPTION		SHT 1 OF 1	
ECN		SIZE A	

REV	DATE	BY	CHK	APR	DESCRIPTION	ECN
--	---	---	---	---	ADDED WALL THICKNESS TO TABLE. ADDED * TO PART NUMBERS AND REVISED NOTE 1.	---
08	5/21/14	BWG	VJS	JADE	REVISED DIMENSIONS. UPDATED TITLE BORDER AND REMOVED PREVIOUS REVISION BALLONS FOR CLAIRITY.	GB0222BD/08

X-ON Electronics

Largest Supplier of Electrical and Electronic Components

Click to view similar products for [Spiral Wraps, Sleeves, Tubing & Conduit](#) category:

Click to view products by [Panduit](#) manufacturer:

Other Similar products are found below :

[601203-000](#) [CTA-0053](#) [8426-11](#) [8429-9](#) [8445-7.5](#) [8450](#) [120-104-24](#) [120-113-16B](#) [120-116-1-1-09BE](#) [120-116-1-1-09BF](#) [120-116-1-1-09BP](#)
[120-116-1-1-12BE](#) [120-116-1-1-12BP](#) [120-116-1-1-20BP](#) [120-116-1-1-32BE](#) [120-117-40](#) [120-123-06](#) [120-123-10](#) [120-123-14](#) [120-123-16](#)
[120-125-12BL](#) [120-125-12R](#) [120-125-16](#) [120-125-16R](#) [120-125-16Y](#) [120-125-20R](#) [120-125-24Y](#) [120-125-28](#) [120-125-28R](#) [120-125-32](#)
[120-125-32R](#) [120-125-40](#) [120-125-56](#) [120-126-09](#) [120-126-09BL](#) [120-126-12](#) [120-126-12BL](#) [120-126-14](#) [120-126-16](#) [120-126-16BL](#) [120-](#)
[126-20](#) [120-126-20BL](#) [120-126-20R](#) [120-126-24](#) [120-126-28](#) [120-126-32](#) [120-126-40BL](#) [120-126-52](#) [120-126-52BL](#) [120-104-12](#)