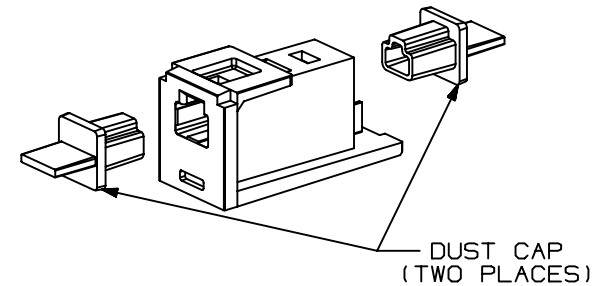
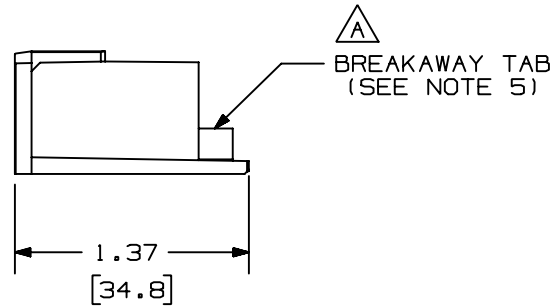
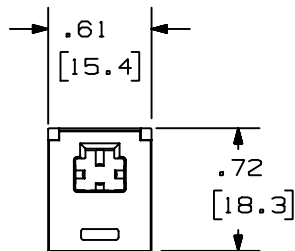


THIS COPY IS PROVIDED ON A RESTRICTED BASIS AND IS NOT TO BE USED IN ANY WAY DETRIMENTAL TO THE INTERESTS OF PANDUIT CORP.

PANDUIT P/N	WEIGHT
CMMJ**	1.00 lb/100 PCS (456 g/100 PCS)

NOTES:

- SEE CURRENT CATALOG FOR ADDITIONAL PART NUMBER SUFFIXES TO INDICATE COLOR AND OR PACKAGE QUANTITY.
- MATERIAL: ADAPTER: PC/ABS  
DUST CAP: RUBBER
- MTRJ ADAPTER IS SUPPLIED WITH TWO DUST CAPS.
- DIMENSIONS IN PARENTHESES ARE IN METRIC.
- REMOVE BREAKAWAY TAB TO INSTALL PLUG UPSIDE DOWN TO REVERSE THE POLARITY OF THE CONNECTION.



MODEL FILENAME	M00857BB_MTRJ_ADAPT_00.PRT
CAD FILENAME/LAYERS	M00857BB_DC_00B.PRT (1)

**PANDUIT** CORP. TINLEY PARK, ILLINOIS  
 MULTIMODE MTRJ PLUG TO PLUG ADAPTER  
 MINI-COM MODULE (CMMJ\*\*) CUSTOMER DRAWING

UNLESS OTHERWISE SPECIFIED, DIMENSIONAL TOLERANCES ARE: (.X) ± (.XXX) ± (.XX) ± .02 (.5) ANGLES ±		UNLESS OTHERWISE SPECIFIED, ALL DIMENSIONS ARE GIVEN IN INCHES, THIRD ANGLE PROJECTION.	
DRAWN BY TA	MAT'L: AS NOTED	SCALE FULL	
DATE 03-27-00	DRAWING NO. 00857-04	DWG A	
CHK'D JAW		SIZE	

REV	DATE	BY	CHK	DESCRIPTION	ECN	R	CUST	SUP	OTH
I	04-13-00	EFK		C. REVISED TITLEBLOCK B. ADDED NOTE 5 A. ADDED BREAKAWAY TAB LABEL	00857-04				
R	03-27-00	TA	JAW	RELEASED TO PRODUCTION	00857-04	JAW	JAW		

## X-ON Electronics

Largest Supplier of Electrical and Electronic Components

*Click to view similar products for [Fibre Optic Connectors](#) category:*

*Click to view products by [Panduit](#) manufacturer:*

Other Similar products are found below :

[0004700001](#) [6100-R](#) [6313](#) [F709722200](#) [F709730000](#) [F718183204](#) [F727403500](#) [F727752800](#) [8119](#) [9440F20-27S-190](#) [944-120-6001](#)  
[9441F10SL-3S](#) [9444W28-21S](#) [9444W36-10S](#) [9446F10SL-4S](#) [9446W20-16S](#) [953-101-5310-P](#) [954-101-57202B](#) [A0270169](#) [12-9122](#) [12-5702](#)  
[AX101713](#) [AX102420](#) [AX103923](#) [AX104024](#) [AX104193](#) [AX104230](#) [AX104562](#) [AX105203-B25](#) [AX105205-S1](#) [EHSC2M](#) [17-300800](#)  
[181-011-126](#) [181-011-S](#) [181-057-126](#) [HRFC-R2\(40\)](#) [NKSOPBUY](#) [20500002116](#) [2064996-1](#) [20800001065](#) [2170](#) [9132](#) [2612](#) [2620](#) [9291](#)  
[9440F16-10S](#) [9440F20-18S](#) [9446F16-10S-190](#) [953-106-50231](#) [953-120-5003](#)