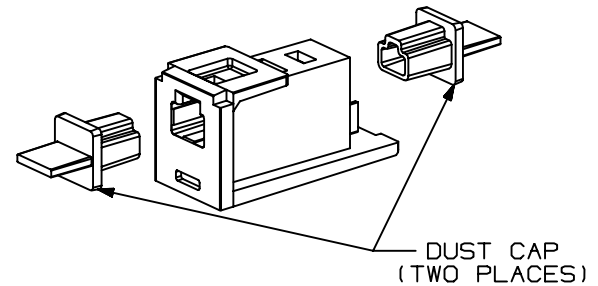
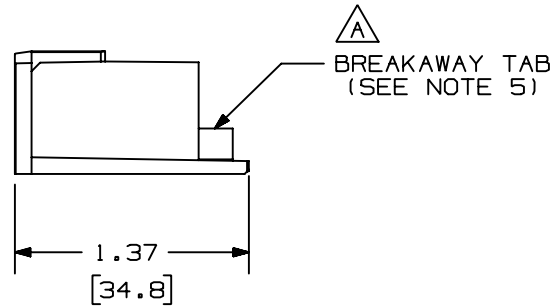
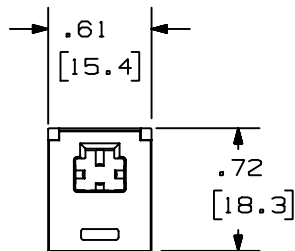


THIS COPY IS PROVIDED ON A RESTRICTED BASIS AND IS NOT TO BE USED IN ANY WAY DETRIMENTAL TO THE INTERESTS OF PANDUIT CORP.

PANDUIT P/N	WEIGHT
CMMJ**	1.00 lb/100 PCS (456 g/100 PCS)

NOTES:

- SEE CURRENT CATALOG FOR ADDITIONAL PART NUMBER SUFFIXES TO INDICATE COLOR AND OR PACKAGE QUANTITY.
- MATERIAL: ADAPTER: PC/ABS
DUST CAP: RUBBER
- MTRJ ADAPTER IS SUPPLIED WITH TWO DUST CAPS.
- DIMENSIONS IN PARENTHESES ARE IN METRIC.
- REMOVE BREAKAWAY TAB TO INSTALL PLUG UPSIDE DOWN TO REVERSE THE POLARITY OF THE CONNECTION.



MODEL FILENAME	M00857BB_MTRJ_ADAPT_00.PRT
CAD FILENAME/LAYERS	M00857BB_DC_00B.PRT (1)

PANDUIT CORP. TINLEY PARK, ILLINOIS
 MULTIMODE MTRJ PLUG TO PLUG ADAPTER
 MINI-COM MODULE (CMMJ**) CUSTOMER DRAWING

UNLESS OTHERWISE SPECIFIED, DIMENSIONAL TOLERANCES ARE: (.X) ± (.XXX) ± (.XX) ± .02 (.5) ANGLES ±		UNLESS OTHERWISE SPECIFIED, ALL DIMENSIONS ARE GIVEN IN INCHES, THIRD ANGLE PROJECTION.	
DRAWN BY TA	MAT'L: AS NOTED	SCALE FULL	DWG A
DATE 03-27-00		DRAWING NO. 00857-04	SIZE A
CHK'D JAW			

REV	DATE	BY	CHK	DESCRIPTION	ECN	R	CUST	SUP	OTH
I	04-13-00	EFK		C. REVISED TITLEBLOCK B. ADDED NOTE 5 A. ADDED BREAKAWAY TAB LABEL	00857-04				
R	03-27-00	TA	JAW	RELEASED TO PRODUCTION	00857-04	JAW	JAW		

X-ON Electronics

Largest Supplier of Electrical and Electronic Components

Click to view similar products for [Fiber Optic Connectors](#) category:

Click to view products by [Panduit](#) manufacturer:

Other Similar products are found below :

[0004700001](#) [6100-R](#) [6313](#) [F709034706](#) [F709722200](#) [F718183204](#) [F727403500](#) [F727752800](#) [FCXO-12-3BY](#) [FO-SCREW\(M2X6\)](#) [9440F20-27S-190](#) [944-120-6001](#) [944-125-6003](#) [9441F10SL-3S](#) [9446F10SL-4S](#) [953-101-5310-P](#) [954-101-57202B](#) [A0270169](#) [12-9122](#) [12-5702](#) [143025NC](#) [AX101713](#) [AX102420](#) [AX103923](#) [AX104141](#) [AX104193](#) [AX104228](#) [AX104230](#) [AX104562](#) [AX105203-B25](#) [AX105205-S1](#) [EHSC2M](#) [17-300800](#) [181-011-126](#) [BT34IW](#) [HRFCP-HSCJ-1\(61\)](#) [HRFC-R2\(40\)](#) [NKSOPBUY](#) [20500002116](#) [2064996-1](#) [20800001065](#) [2170](#) [9132](#) [2612](#) [2620](#) [9291](#) [9440F18-19S](#) [9440F20-14P](#) [9440F20-14PW](#) [9440W18-1S](#)