



Mini-Com® All Metal Shielded Modular Patch Panels

- Accept Mini-Com® Modules for shielded applications
- Provide write-on areas for port identification
- CPT removal tool allows easy moves, adds, and changes of shielded jack modules
- Mount to standard TIA/EIA 19" rack or 23" racks with optional extender bracket



CP24BLY



CP48BLY



CP24WSBLY

PATENTED



CP48WSBLY



CPA24BLY

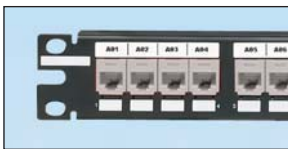


CPA48BLY

Part Number	Part Description	No. of Rack Spaces [^]	Std. Pkg. Qty.	Std. Ctn. Qty.
Mini-Com® All Metal Modular Patch Panels				
CP24BLY	24-port all metal modular patch panel.	1	1	10
CP48BLY	48-port all metal modular patch panel.	2	1	10
CP72BLY	72-port all metal modular patch panel. Rear cable management is required to prevent twisting.	2	1	10
Mini-Com® All Metal Modular Patch Panels with Strain Relief Bar				
CP24WSBLY	24-port all metal modular patch panel with strain relief bar.	1	1	10
CP48WSBLY	48-port all metal modular patch panel with strain relief bar.	2	1	10
Mini-Com® All Metal Angled Modular Patch Panels				
CPA24BLY	24-port angled all metal patch panel.	1	1	10
CPA48BLY	48-port angled all metal patch panel.	2	1	10
CPA72BLY	72-port angled all metal patch panel.	2	1	10

[^]One rack space = 1.75" (44.45mm).
M6 and #12-24 mounting screws included.
Each patch panel includes the CPT tool to ease removal of Mini-Com® Shielded Jack Modules.
Contact Customer Service for other available port options.
To bond the patch panel, see the patent pending StructuredGround™ Bonding Hardware Kits on page M.26.

Component Labels for Mini-Com® All Metal Shielded Modular Patch Panels



Patch Panel Part Number	Suggested Labels Solutions for TIA/EIA-606-A Compliance			
	Laser/Ink Jet Desktop Printer Label	TDP43ME Thermal Transfer Desktop Printer Label	PanTher™ LS8E Hand-Held Printer Label	Cougar™ LS9 Hand-Held Printer Label
All Metal Shielded Modular Patch Panels on this page	C252X030FJJ	C252X030YPT	C252X030FJC	T031X000FJC-BK

For complete labeling solutions and product information, reference charts on pages O.1 – O.22 of SA-NCCB51.

X-ON Electronics

Largest Supplier of Electrical and Electronic Components

Click to view similar products for [D-Sub Tools & Hardware](#) category:

Click to view products by [Panduit](#) manufacturer:

Other Similar products are found below :

[000-01-09-132](#) [000-01-21-132](#) [000-01-31-162](#) [572019-00105-70](#) [000-01-37-162](#) [621-250-113-115](#) [D110550-2](#) [D20418-137](#) [780-518-50SG6-WS](#) [86552009](#) [86553115TLF](#) [86553117TLF](#) [1230032-1](#) [1-5021101-2](#) [15-000050](#) [1589283-4](#) [160-000-005R031](#) [16-000230](#) [160-025-004R031](#) [160-020-209R000](#) [160X10909X](#) [164C03939A](#) [177-505-A-2-2](#) [1-966830-8](#) [21018-6](#) [2-1393560-9](#) [JS-1000](#) [L17D204182M3E](#) [L17D53018](#) [300X10779X](#) [160X10189X](#) [160X10419X](#) [162-000-050R000](#) [21018-5](#) [212561-3](#) [248C21550X](#) [CF15P](#) [QLOCKPOST-2](#) [D110277](#) [500-008NF1K-01](#) [500-008NF3R3KS-01](#) [500-017M09FN](#) [500-017M15MHN](#) [500-024M1](#) [500-068M3](#) [5-1393561-5](#) [C115373-0001](#) [C115373-0002](#) [3342-4-KIT](#) [K1003](#)