

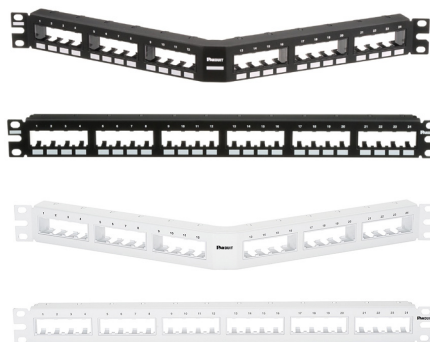
Mini-Com® Flush Mount Modular Patch Panels

PANDUIT®

SPECIFICATION SHEET

specifications

Flush mount modular patch panels shall consist of a metal panels with molded rear snap-in faceplates. Patch Panels shall accept all Mini-Com® Modules for UTP, STP, fiber or A/V applications and shall mount to standard 19" racks. Patch panels shall be available in 24-port and 48-port standard density. Select styles shall be available in white. Flush mount patch panels shall be easy to identify with pre-numbered ports. Angled patch panels shall be designed at an optimum angle to help route the cable.



technical information

Mounting options:	Mounts to standard 19" rack
Material:	Stamping is CRS and faceplate is ABS
Packaging:	Packaged with appropriate pre-installed snap in faceplates and a set of mounting screws (#12-24)

key features and benefits

Modular	Accepts all Panduit Mini-Com® Modules to mix and match media types in the same panel
Angled design	Minimize the need for horizontal cable managers by enabling patch cords to be routed directly into vertical cable managers which leads to increase closet density
Port and panel identification	Pre-numbered ports with write on areas
Optional strain relief bars	To help support and manage cables
Optional filler panels	Flat and angled design fill unused rack openings to provide a clean and consistent look when used with any version of Panduit patch panels
Optional extender bracket	Allows 19" patch panels to be mounted on a 23" rack
Color options	Select styles available in white, standard color is Black

applications

Mini-Com® Flush Mount Modular Patch Panels are ideal for multi-media applications; they accept all Mini-Com® Modules. Flat and angled designs in various port densities available to fit most needs, include pre-numbered port identification. Angled patch panels are available for applications in which rack space is limited.

The design allows cable to flow to each side of the rack, minimizing the need for horizontal cable managers and increasing the density of the rack space. Flush mount patch panels can mount on a standard 19" rack or a 23" rack when using the extender brackets PEB1 or PEB2.

Flat Style with ports grouped in 4

BLACK:	
CPP24FMWBLY	24-port, 1 RU
CPP48FMWBLY	48-port, 2 RU
CPP48FMVNSWBLY	48-port, 2 RU
WHITE:	
CPP24FMWWH	24-port, 1 RU
CPP48FMWWH	48-port, 2 RU

Angled Style with ports grouped in 4

BLACK:	
CPPA24FMWBLY	24-port, 1 RU
CPPA48FMWBLY	48-port, 2 RU
WHITE:	
CPPA24FMWWH	24-port, 1 RU
CPPA48FMWWH	48-port, 2 RU

Flat Style with ports grouped in 6

CPP48FM6BL	48-port, 2 RU
-------------------	---------------

Angled Style with ports grouped in 6

CPPA48FM6BL	48-port, 2 RU
CPPA48FM6VNSBL	48-port, 2 RU (vertical numbering)

Patch Panel Accessories

BLACK:	
CPATCBL	Transitional cover
CPAF1BLY	Angled filler panel 1 RU
CPAF2BLY	Angled filler panel 2 RU
DPFP1	Flat filler panel 1 RU
DPFP2	Flat filler panel 2 RU
WHITE:	
CPATCWH	Transitional cover
CPAF1WH	Angled filler panel 1 RU
CPAF2WH	Angled filler panel 2 RU
DPFP1WH	Flat filler panel 1 RU
DPFP2WH	Flat filler panel 2 RU

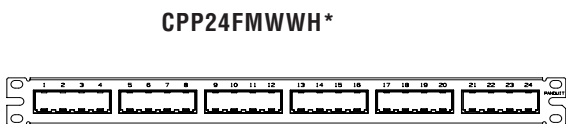
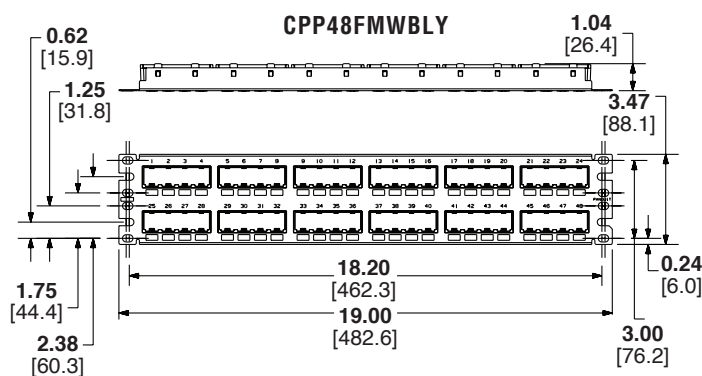
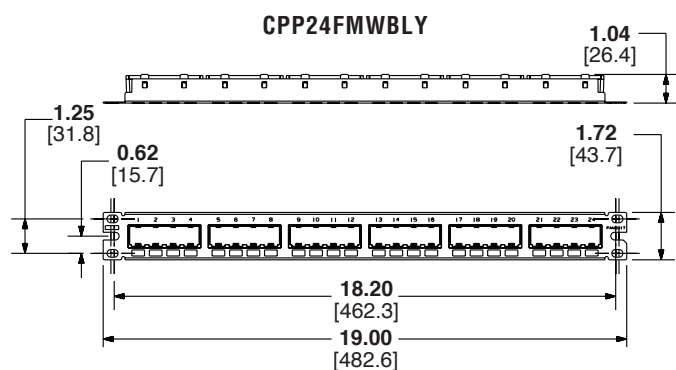
Extender Brackets

PEB1	1 RU
PEB2	2 RU

Mini-Com® Flush Mount Modular Patch Panels

Mini-Com® Flush Mount Modular Patch Panels Label Chart

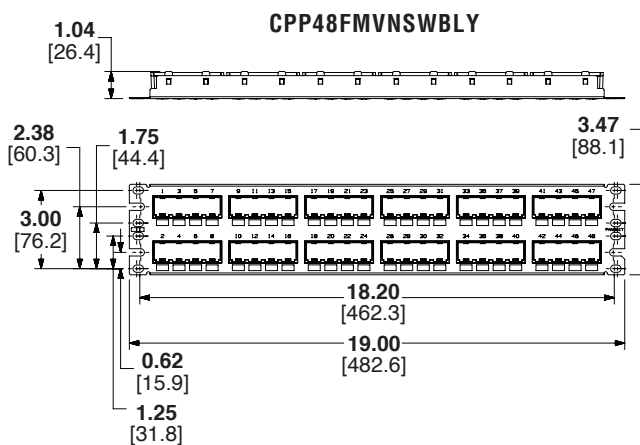
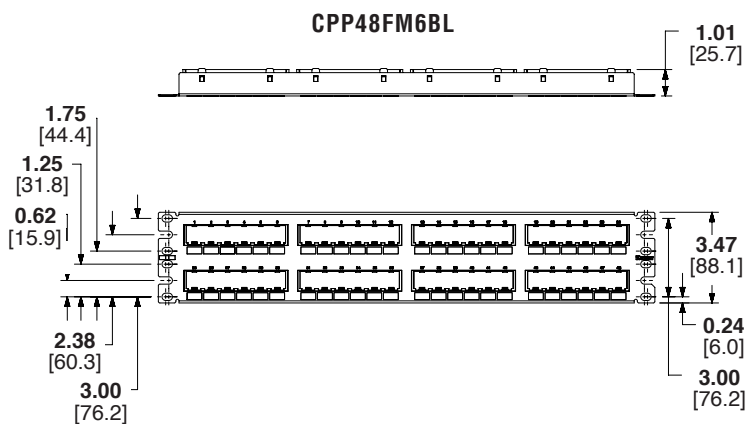
Part Number	Label Type	Laser/Ink	LS8	Thermal
CPP24FMWBLY	Adhesive	C252X030FJJ	C252X030FJC	C252X030YPT
CPP24FMWWH				
CPP48FMWBLY				
CPP48FMWWH				
CPPA24FMWBLY				
CPPA24FMWWH				
CPPA48FMWBLY				
CPPA48FMWWH				
CPP48FMVNSWBLY				
CPP48FM6BL				
CPPA48FM6BL				
CPPA48FM6VNSBL				



Dimensions are the same as CPP24FMWBLY

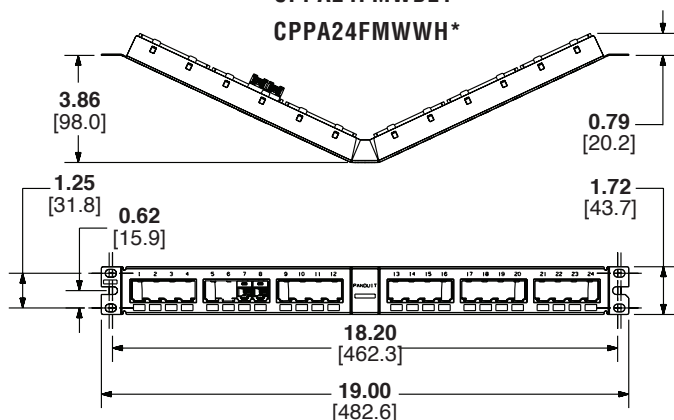


Dimensions are the same as CPP48FMWBLY

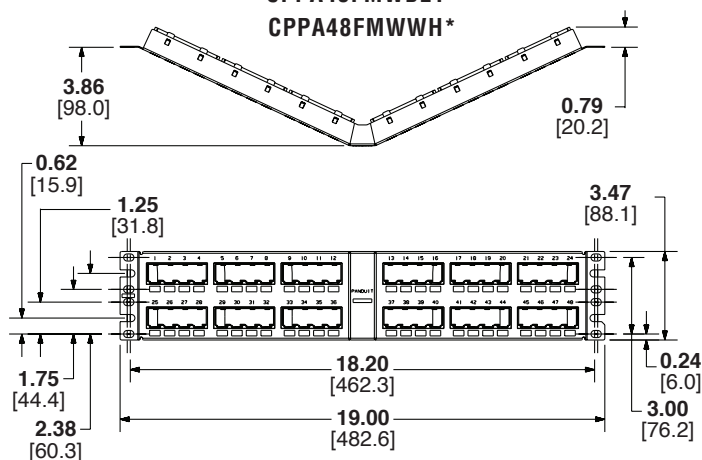


Mini-Com® Flush Mount Modular Patch Panels

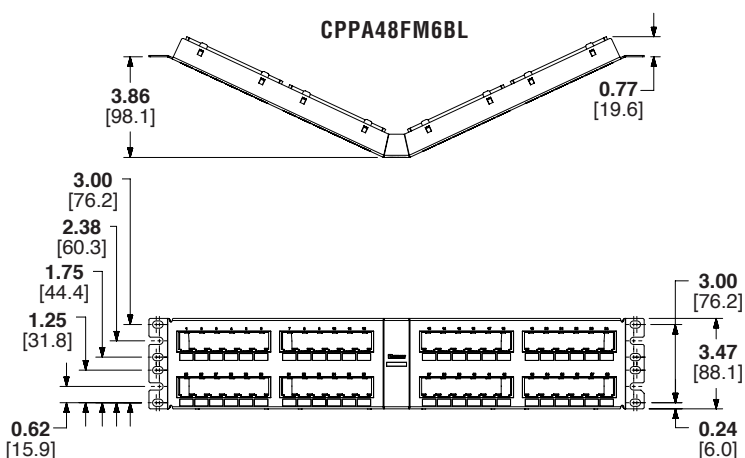
CPPA24FMWBLY
CPPA24FMWWH*



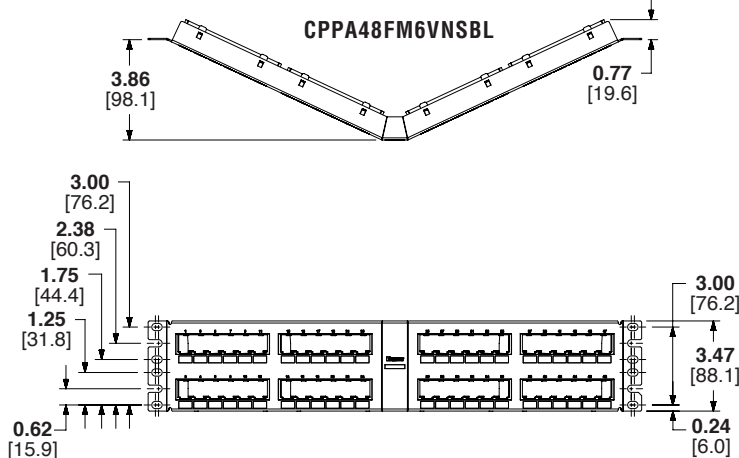
CPPA48FMWBLY
CPPA48FMWWH*



CPPA48FM6BL



CPPA48FM6VNSBL



* White patch panels do not include the write-on detail box below the ports.

Dimensions are in inches. [Dimensions in brackets are metric].

WORLDWIDE SUBSIDIARIES AND SALES OFFICES

PANDUIT US/CANADA
Phone: 800.777.3300

PANDUIT EUROPE LTD.
London, UK
Phone: 44.20.8601.7200

PANDUIT SINGAPORE PTE. LTD.
Republic of Singapore
Phone: 65.6305.7575

PANDUIT JAPAN
Tokyo, Japan
Phone: 81.3.6863.6000

PANDUIT LATIN AMERICA
Guadalajara, Mexico
Phone: 52.33.3777.6000

PANDUIT AUSTRALIA PTY. LTD.
Victoria, Australia
Phone: 61.3.9794.9020

For a copy of Panduit product warranties, log on to www.panduit.com/warranty

For more information

Visit us at www.panduit.com

Contact Customer Service by email: cs@panduit.com

or by phone: 800.777.3300

PANDUIT®

©2020 Panduit Corp.
ALL RIGHTS RESERVED..
OTSP33--WW-ENG
Replaces WW-OTSP25
3/2020

X-ON Electronics

Largest Supplier of Electrical and Electronic Components

Click to view similar products for [Wire Ducting & Raceways](#) category:

Click to view products by [Panduit](#) manufacturer:

Other Similar products are found below :

[800A-LB](#) [801I-LSP](#) [802A-ECSP](#) [802I-ICSP](#) [923223-000](#) [PRAF6WH-X](#) [A0405538](#) [1301150342](#) [1301160034](#) [1301170070](#) [1301180011](#)
[1301230083](#) [1301230153](#) [1301240273](#) [1301250006](#) [1302261238](#) [1302261321](#) [1302262552](#) [1302263103](#) [1302263178](#) [1302263259](#)
[1302263816](#) [1302263860](#) [1302264375](#) [1302264390](#) [1301150343](#) [1301160030](#) [1301170050](#) [1301170051](#) [1301170061](#) [1301180013](#)
[1301230086](#) [1301230130](#) [1301240054](#) [1302260055](#) [1302260376](#) [1302261343](#) [1302261344](#) [1302262674](#) [1302263095](#) [1302263166](#)
[1302263209](#) [1302263513](#) [1302263851](#) [1302263870](#) [1302264137](#) [1302264218](#) [DD1/J](#) [AX101472](#) [AX102007](#)