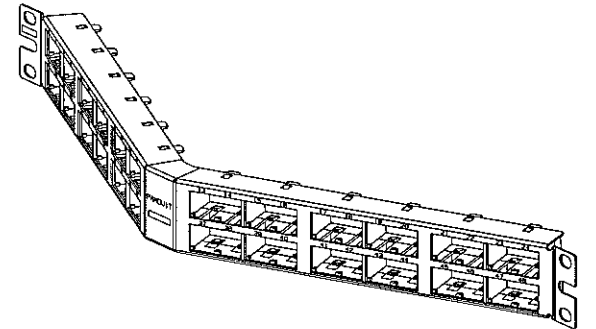
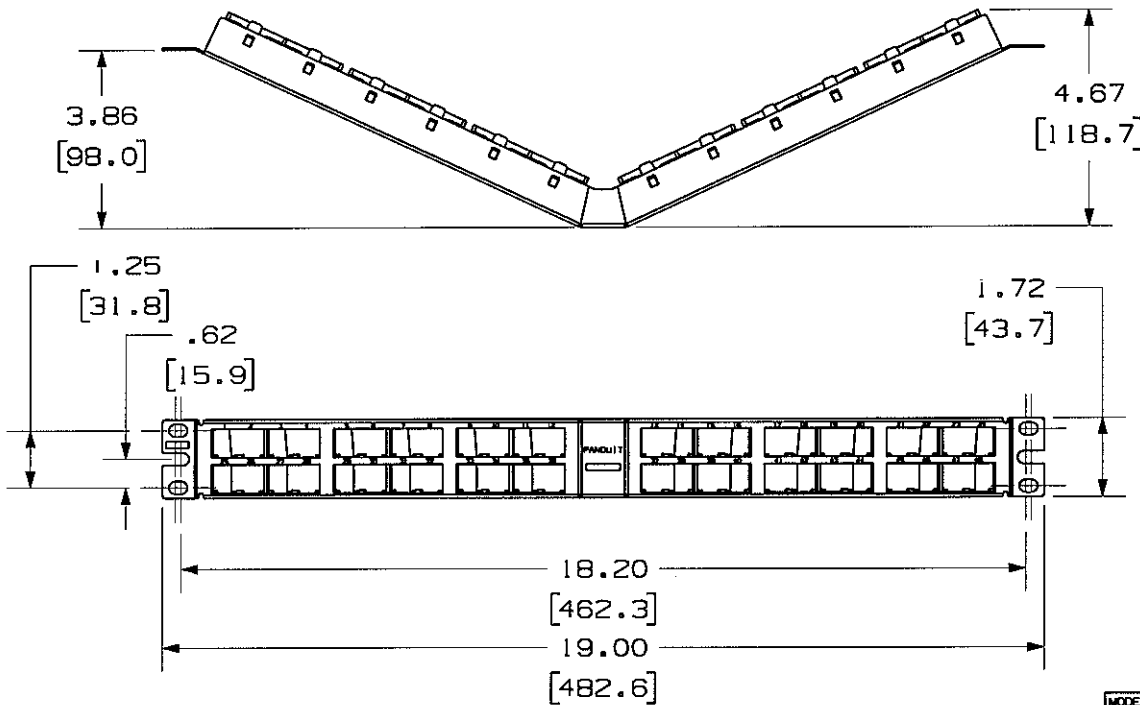


THIS COPY IS PROVIDED ON A RESTRICTED BASIS AND IS NOT TO BE USED IN ANY WAY DETRIMENTAL TO THE INTERESTS OF PANDUIT CORP.

PANDUIT P/N	WEIGHT
CPPA48HDWBLY	6.88 LB/10 PCS (3215.2.0 g/10 PCS)


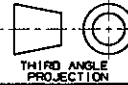
- NOTES:
- SEE CURRENT CATALOG FOR ADDITIONAL PART NUMBER SUFFIXES TO INDICATE COLOR AND OR PACKAGE QUANTITY.
 - SEE CATALOG FOR COMPLETE LIST OF PARTS APPLICABLE FOR USE WITH THIS PART.
 - PACKAGE CONTENTS:
 - (1) -48 PORT ANGLED STAMPING
 - (6) -8 POSITION FACEPLATE (ASSEMBLED TO PANEL)
 - (1) -SCREW KIT (INCLUDES FOUR #12-24 SCREWS)
 - (1) -SCREW KIT (INCLUDES FOUR M6 SCREWS)
 - DIMENSIONS IN [] ARE IN METRIC.



MODEL FILENAME M01598AA_CPPA48HD_ASMBL_01.PRT	SIZE A
DRAWING FILENAME M02479DB_DC82_00A.PRT	

MINI-COM 48 PORT ANGLED HIGH DENSITY MODULAR PATCH PANEL CUSTOMER DRAWING

REV	DATE	BY	CHK	DESCRIPTION	ECN	R	CUST	SUP	OTH
R	8-8-06	JsP	MJD	RELEASED TO PRODUCTION	02479-082		MJD		

 PANDUIT ™ CORP. TINLEY PARK, ILL 60477	I.T. NUMBER N/A
	PRODUCT SPEC N/A
	WORK INSTRUCTION N/A
 THIRD ANGLE PROJECTION	ALL DIMENSIONS ARE GIVEN IN INCHES, UNLESS OTHERWISE SPECIFIED. DIMENSIONAL TOLERANCES ARE: (.X) ± .XXX) ± .010(.3) (.XX) ± .031(.8) ANGLES ±
DRAWN BY JsP	SCALE NONE
DATE 8-8-06	PART NO. CPPA48HDWBLY
CHECKED MJD	DRAWING NO. 02479-082
MATERIAL STAMPING: 20 GAGE C.R.S. FACEPLATE: ABS	

X-ON Electronics

Largest Supplier of Electrical and Electronic Components

Click to view similar products for [Wire Ducting & Raceways](#) category:

Click to view products by [Panduit](#) manufacturer:

Other Similar products are found below :

[800A-LB](#) [801I-LSP](#) [802A-ECSP](#) [802I-ICSP](#) [923223-000](#) [PRAF6WH-X](#) [A0405538](#) [1301150342](#) [1301160034](#) [1301170070](#) [1301180011](#)
[1301230083](#) [1301230153](#) [1301240273](#) [1301250006](#) [1302261238](#) [1302261321](#) [1302262552](#) [1302263103](#) [1302263178](#) [1302263259](#)
[1302263816](#) [1302263860](#) [1302264375](#) [1302264390](#) [1301150343](#) [1301160030](#) [1301170050](#) [1301170051](#) [1301170061](#) [1301180013](#)
[1301230086](#) [1301230130](#) [1301240054](#) [1302260055](#) [1302260376](#) [1302261343](#) [1302261344](#) [1302262674](#) [1302263095](#) [1302263166](#)
[1302263209](#) [1302263513](#) [1302263851](#) [1302263870](#) [1302264137](#) [1302264218](#) [DD1/J](#) [AX101472](#) [AX102007](#)