

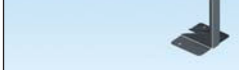
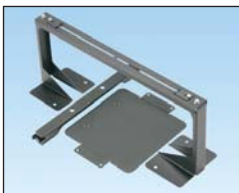
## CabRunner<sup>®</sup> Overhead Cable Routing System

- Wide molded design provides a high capacity pathway that is self-supporting and does not need secondary mounting infrastructure

- Integral spillouts align with cable inlets on cabinet and provide 3" (75mm) bend radius control

- Designed specifically for use with Net-Access<sup>™</sup> Switch and Server Cabinets

- Clean, simple design complements Net-Access<sup>™</sup> Cabinets providing greater data center aesthetics

**CRB6BL****CRB6VEDBL****CRBRDGBL****CRTB****CRVEDTB**

Part Number	Part Description	Std. Pkg. Qty.	Std. Ctn. Qty.
-------------	------------------	----------------	----------------

**Base Unit**

<b>CRB6BL</b>	CabRunner <sup>®</sup> Overhead Cable Routing System Base Unit with 6" (150mm) high wall. Supplied with shroud and fasteners required for assembly to Net-Access <sup>™</sup> Cabinets.	1	—
<b>CRB6VEDBL</b>	CabRunner <sup>®</sup> Overhead Cable Routing System Base Unit with 6" (150mm) high wall. Supplied with a shroud and fasteners required for assembly to Net-Access <sup>™</sup> Cabinets with a vertical exhaust duct.	1	—

**Bridge Insert**

<b>CRBRDGBL</b>	CabRunner <sup>®</sup> Overhead Cable Routing System Bridge Insert. Snaps into CRB6BL to cover unused cable spillouts and provide bend radius control for adjacent cabinet. Two inserts required for each opening in CabRunner <sup>®</sup> Base Unit.	1	5
-----------------	--	---	---

**Trapeze Bracket**

<b>CRTB</b>	CabRunner <sup>®</sup> Overhead Cable Routing System Trapeze Bracket. Used to provide a mounting structure for integrating FiberRunner <sup>®</sup> Cable Routing System to the base unit.	1	—
<b>CRVEDTB</b>	CabRunner <sup>®</sup> Overhead Cable Routing System Trapeze Bracket. Used to provide a mounting structure for integrating FiberRunner <sup>®</sup> Cable Routing System to the base unit on Net-Access <sup>™</sup> Cabinets with a vertical exhaust duct.	1	—

## X-ON Electronics

Largest Supplier of Electrical and Electronic Components

*Click to view similar products for [Wire Ducting & Raceways](#) category:*

*Click to view products by [Panduit](#) manufacturer:*

Other Similar products are found below :

[800A-LB](#) [801I-LSP](#) [802A-ECSP](#) [802I-ICSP](#) [923223-000](#) [PRAF6WH-X](#) [A0405538](#) [1301150342](#) [1301160034](#) [1301170070](#) [1301180011](#)  
[1301230083](#) [1301230153](#) [1301240273](#) [1301250006](#) [1302261238](#) [1302261321](#) [1302262552](#) [1302263103](#) [1302263178](#) [1302263259](#)  
[1302263816](#) [1302263860](#) [1302264375](#) [1302264390](#) [1301150343](#) [1301160030](#) [1301170050](#) [1301170051](#) [1301170061](#) [1301180013](#)  
[1301230086](#) [1301230130](#) [1301240054](#) [1302260055](#) [1302260376](#) [1302261343](#) [1302261344](#) [1302262674](#) [1302263095](#) [1302263166](#)  
[1302263209](#) [1302263513](#) [1302263851](#) [1302263870](#) [1302264137](#) [1302264218](#) [DD1/J](#) [AX101472](#) [AX102007](#)