

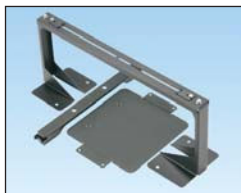
## CabRunner<sup>®</sup> Overhead Cable Routing System

- Wide molded design provides a high capacity pathway that is self-supporting and does not need secondary mounting infrastructure

- Integral spillouts align with cable inlets on cabinet and provide 3" (75mm) bend radius control

- Designed specifically for use with Net-Access<sup>™</sup> Switch and Server Cabinets

- Clean, simple design complements Net-Access<sup>™</sup> Cabinets providing greater data center aesthetics

**CRB6BL****CRB6VEDBL****CRBRDGBL****CRTB****CRVEDTB**

Part Number	Part Description	Std. Pkg. Qty.	Std. Ctn. Qty.
-------------	------------------	----------------	----------------

**Base Unit**

<b>CRB6BL</b>	CabRunner <sup>®</sup> Overhead Cable Routing System Base Unit with 6" (150mm) high wall. Supplied with shroud and fasteners required for assembly to Net-Access <sup>™</sup> Cabinets.	1	—
<b>CRB6VEDBL</b>	CabRunner <sup>®</sup> Overhead Cable Routing System Base Unit with 6" (150mm) high wall. Supplied with a shroud and fasteners required for assembly to Net-Access <sup>™</sup> Cabinets with a vertical exhaust duct.	1	—

**Bridge Insert**

<b>CRBRDGBL</b>	CabRunner <sup>®</sup> Overhead Cable Routing System Bridge Insert. Snaps into CRB6BL to cover unused cable spillouts and provide bend radius control for adjacent cabinet. Two inserts required for each opening in CabRunner <sup>®</sup> Base Unit.	1	5
-----------------	--	---	---

**Trapeze Bracket**

<b>CRTB</b>	CabRunner <sup>®</sup> Overhead Cable Routing System Trapeze Bracket. Used to provide a mounting structure for integrating FiberRunner <sup>®</sup> Cable Routing System to the base unit.	1	—
<b>CRVEDTB</b>	CabRunner <sup>®</sup> Overhead Cable Routing System Trapeze Bracket. Used to provide a mounting structure for integrating FiberRunner <sup>®</sup> Cable Routing System to the base unit on Net-Access <sup>™</sup> Cabinets with a vertical exhaust duct.	1	—

## X-ON Electronics

Largest Supplier of Electrical and Electronic Components

*Click to view similar products for [panduit manufacturer](#):*

Other Similar products are found below :

[PK10-56R-L](#) [PCMBR-13](#) [PCPA11IW](#) [CRE32](#) [M200X042UPT](#) [M200X050ACT](#) [M200X050Y7T](#) [M200X080FQT](#) [M200X100ACT](#)  
[M200X100AIT](#) [CRTW](#) [CSVBP](#) [CT-1000](#) [CT-1004](#) [CT-1104](#) [CT-2550CH](#) [CT-2570CH](#) [M300X050ACT](#) [M300X100ACT](#) [CT-900HPH](#)  
[CUFB48BL](#) [CVED32VE](#) [CVED32VEPG](#) [CVED40VEN](#) [CVED40VEPG](#) [CWF400](#) [CWMPV2340](#) [CWMPV2440](#) [CWMPV3340](#)  
[CWMPV3440](#) [MBEH-TLR](#) [MBH-MR](#) [MBH-MR316](#) [MBH-TLR316](#) [MBSH-TR](#) [MBS-MR](#) [MBS-MR316](#) [MBS-TLR316](#) [F512B10-NM1](#)  
[F512B10-NM2](#) [F512D5-5F140Y](#) [F512D5-5F15Y](#) [F512D5-5F200Y](#) [F512D5-5F26Y](#) [F512D5-5F30Y](#) [F512D5-5F33Y](#) [F512D5-5F34Y](#)  
[F512D5-5F45Y](#) [F512D5-5F50Y](#) [F512D5-5F54Y](#)