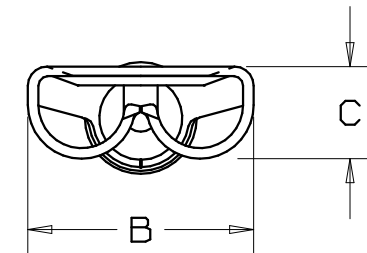


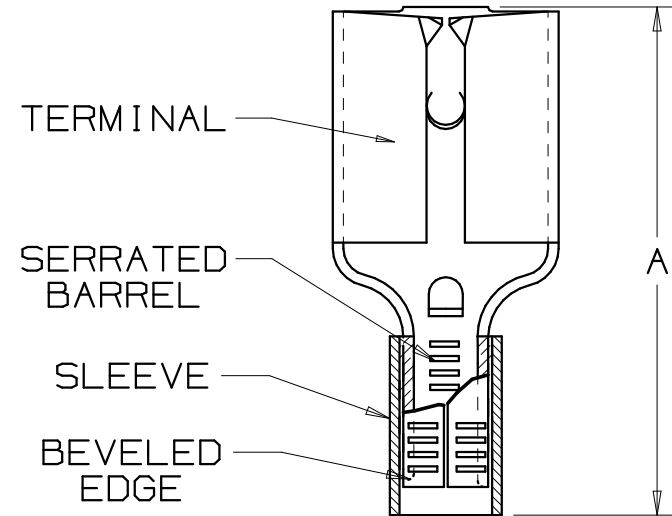
THIS COPY IS PROVIDED ON A RESTRICTED BASIS AND IS NOT TO BE USED IN ANY WAY DETRIMENTAL TO THE INTERESTS OF PANDUIT CORP.

PART NUMBER		TAB SIZE	WIRE RANGE AWG (mm <sup>2</sup> )	DIMENSIONS in		
PREFIX	PKG			A $\pm 0.015$ (0.4)	B $\pm 0.010$ (0.3)	C $\pm 0.010$ (0.3)
D18-188	-C -M	.187 x .020 (4.8 x 0.5)	22-18 (.5-1.0)	.58 (14.7)	.23 (5.8)	.10 (2.5)
* D14-188	-C -M	.187 x .020 (4.8 x 0.5)	16-14 (1.5-2.5)	.58 (14.7)	.23 (5.8)	.10 (2.5)
D18-187	-C -M	.187 x .032 (4.8 x 0.8)	22-18 (.5-1.0)	.58 (14.7)	.23 (5.8)	.10 (2.5)
* D14-187	-C -M	.187 x .032 (4.8 x 0.8)	16-14 (1.5-2.5)	.58 (14.7)	.23 (5.8)	.10 (2.5)



NOTES:

- UL LISTED, UL RECOGNIZED (D14-187 & D14-188 ONLY) AND CSA CERTIFIED FOR:  
A. STRANDED COPPER WIRE ONLY  
B. 302° F (150° C) MAX TEMP RATING
- PACKAGE QTY:  
A. STD: -C=100  
B. BULK: -M=1000
- MATERIAL:  
A. STAMPING: .016 (0.41) THK BRASS, TIN PLATED  
B. SLEEVE: BRASS, TIN PLATED
- WIRE STRIP LENGTH  $9/32^{+1/32}$  (7.1  $^{+0.8}$ ),  $^{-0}$
- FIRST INSERTION FORCE: 12 LB (53N) MAX  
FIRST WITHDRAWAL FORCE: 12 LB (53N) MAX  
6 LB (27N) MIN
- INSTALLATION TOOLS:  
A. UL LISTED AND CSA CERTIFIED: CT-100, CT-200, CT-570, CT-1570, CT-2457CH  
B. UL RECOGNIZED: CT-100, CT-200, CT-570, CT-1570, CT-2457CH  
C. PANDUIT APPROVED: CT-160, CT-260
- DIMENSIONS IN BRACKETS ARE IN MILLIMETERS OR mm<sup>2</sup>



LISTED  
20H3  
E78522



CERTIFIED  
LR31212



RECOGNIZED  
E78522

A41305\_08

**PANDUIT**

CORP.

TINLEY PARK, ILLINOIS

NON-INSULATED FEMALE DISCONNECT,  
SLEEVED BARREL (.188 SERIES)

08	6/06	DAW	DAW	REMOVED MAX. AMPERAGE RATING	TRO0134				
07	7/03	KLFU	SKB	ADDED INTERNAL SERRATIONS WIRE RANGE 1,0 WAS 1,5	012453		SKB	TRO	
06	1/01	RM	SKB	FILESPEC WAS N41305AA_PCD_05	08933		JAC	CCH	
05	10/96	TM		ADD 187'S, UPDATED NOTES, FILESPEC WAS NPC_41305_04	05164				
04	3/95	MS	RS	UPDATED NOTES AND DIMENSIONS	03051		LA	KS	
REV	DATE	BY	CHK	DESCRIPTION	ECN #	QA	CUST	PM	APP

DRAWN BY

DAW

CHK'D

SCALE

NONE

DRAWING NO.

A41305

## X-ON Electronics

Largest Supplier of Electrical and Electronic Components

*Click to view similar products for [Terminals](#) category:*

*Click to view products by [Panduit](#) manufacturer:*

Other Similar products are found below :

[HT-13-10](#) [71M-250-32-NB](#) [01-2065-1-0216](#) [00581P0075](#) [M10-10RX](#) [M10BCK](#) [60205-1](#) [604200-1](#) [60598-1-CUT-TAPE](#) [60617-1-C](#) [60873-1](#) [M14-516R/SK](#) [M14-6RSX](#) [M18-8FBX](#) [M18-8R/LX](#) [M18BCK](#) [61314-6-C](#) [61-S](#) [61-SN-A](#) [62-NBM-A](#) [63-S](#) [640179-1](#) [640917-2-CUT-TAPE](#) [6501550002](#) [66107-2-C](#) [696683-1](#) [696834-1](#) [696861-1](#) [696931-1](#) [696999-1](#) [M8-516RK](#) [M86700006](#) [MA250DMFMX-A](#) [701-2007](#) [701-2307](#) [701-7761-03](#) [70F-110-32-PB](#) [718-N-A](#) [71M-187-20-NBL](#) [71M-250-32-NBL](#) [72F-187-20-NBL](#) [72M-250-32-NBL](#) [7310](#) [73F-250-32](#) [73F-250-32-NL](#) [F14-10C](#) [F-1M](#) [751-250](#) [76650-5002](#) [76828-149](#)