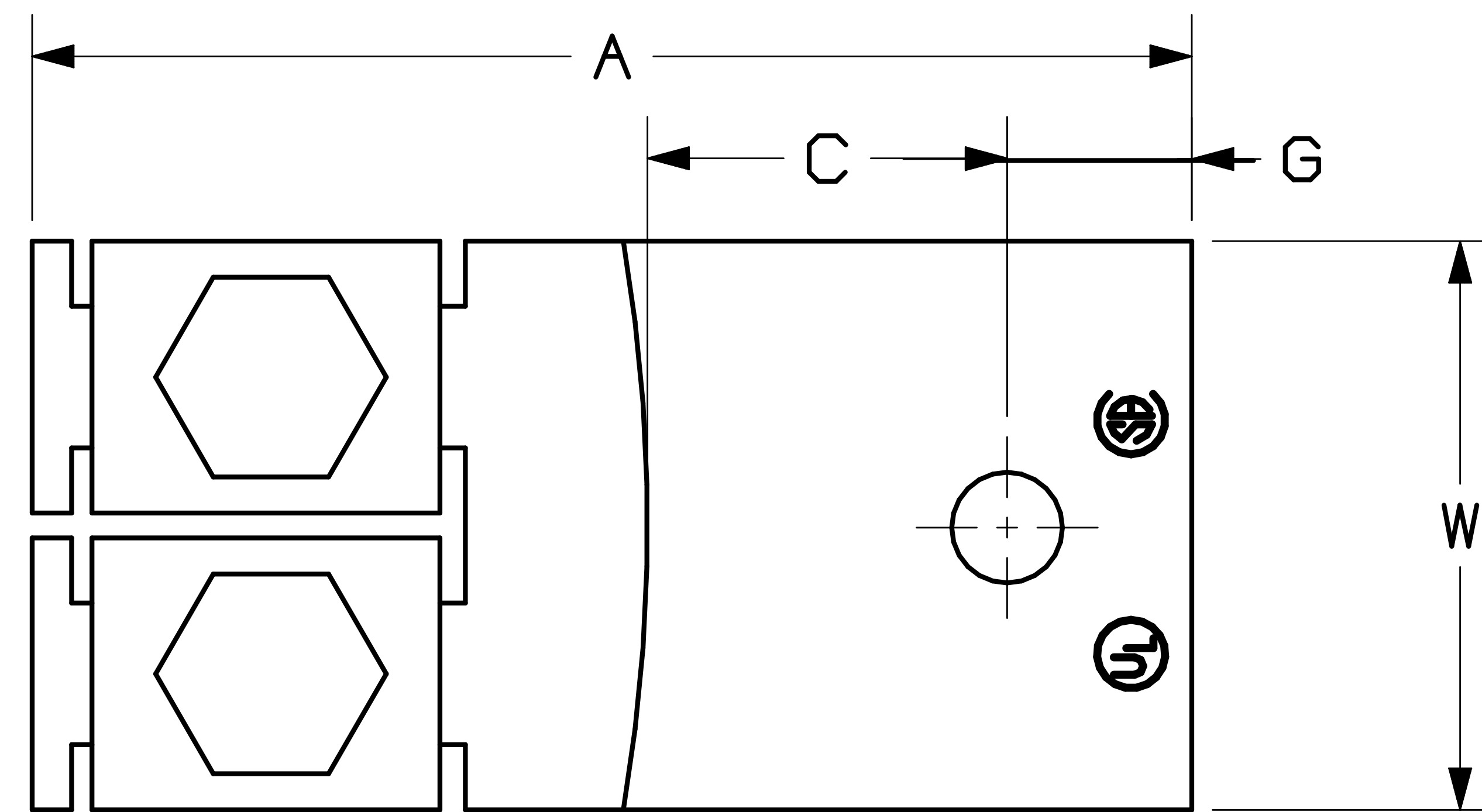
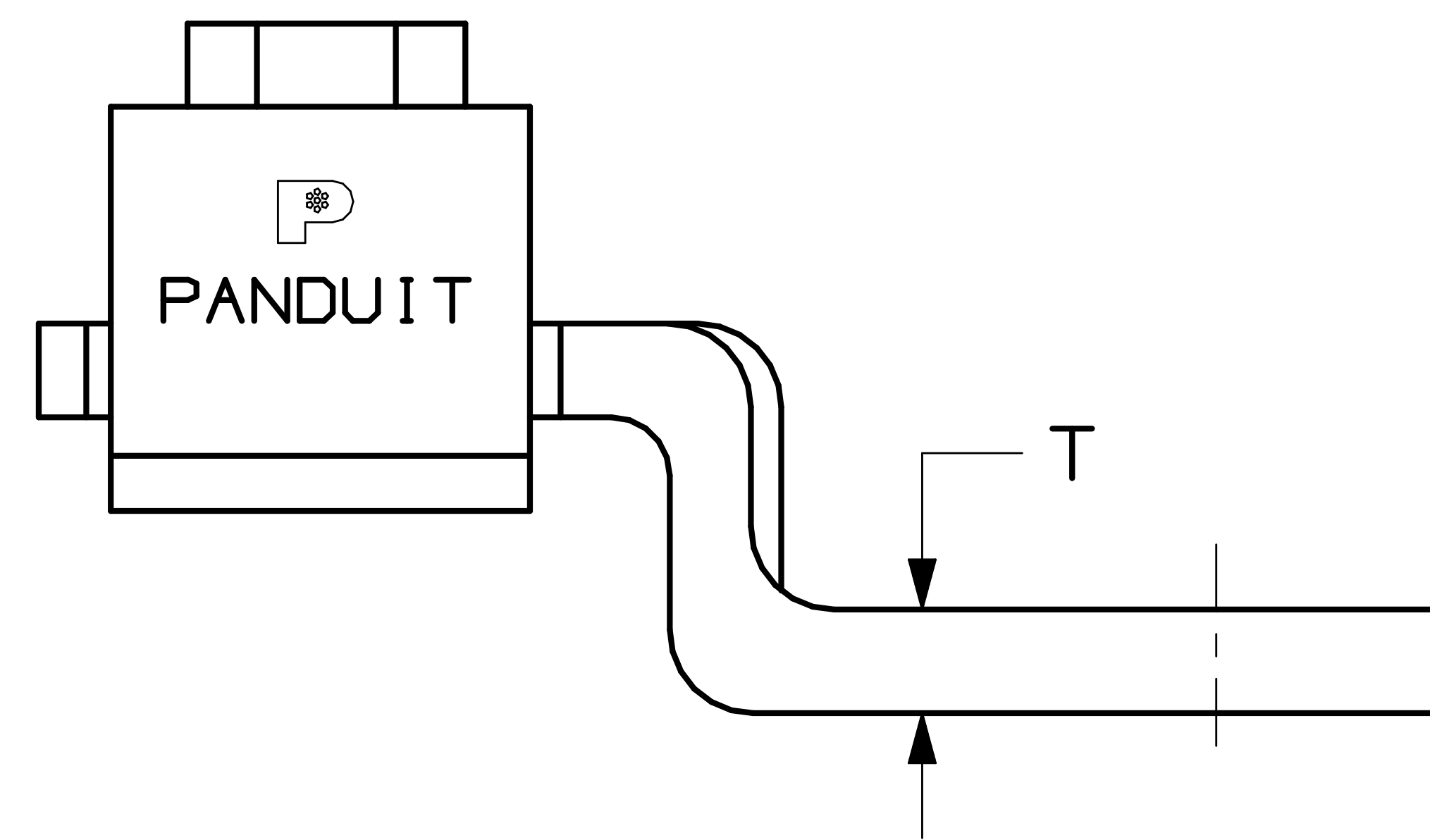


THIS COPY IS PROVIDED ON A RESTRICTED BASIS AND IS NOT TO BE USED IN ANY WAY DETRIMENTAL TO THE INTERESTS OF PANDUIT CORP.

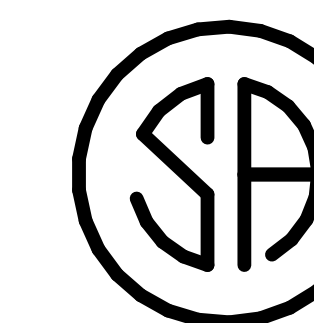


NOTES:

1. UL AND CSA LOGOS ARE TO APPEAR ON ALL PARTS AS SHOWN. (DC450-38-3Y IS NOT CSA CERTIFIED).
2. "P" PANDUIT LOGO OR "PANDUIT" IS TO BE STAMPED ON ALL PARTS.
3. FLAT HEAD SET SCREW IS USED IF HEX SIZE IS NOT GIVEN.
4. MATERIAL: COPPER
5. THIS PART IS TO BE ROHS COMPLIANT.



LISTED
E50999



CERTIFIED
LR35607
(DOES NOT APPLY TO
DC450-38-3Y)

CATALOG NUMBER	COPPER CONDUCTOR SIZE RANGE	CURRENT RATING (AMPS)	BOLT HOLE SIZE	HEX KEY SIZE	DIMENSIONS IN INCHES				
					A	W	G	C	T
DC450-38-3Y	#6-4/0	450	3/8	5/8	3.40	1.50	.94	1.00	.19
DC600-38-3Y	#1-350	600	3/8	3/4	3.50	1.75	.63	1.13	.19
DC800-12-3Y	#1/0-500	800	1/2	3/4	4.43	2.00	.84	1.25	.25

C41550_01

				PANDUIT CORP. TINLEY PARK, ILLINOIS		
01	9/08	JHNU	JHNU	REVISED NOTE 1 TO INDICATE DC450-38-3Y IS NOT CSA CERTIFIED		
00	2/06	JHNU	LEM	DRAWING RELEASED - ROHS COMPLIANT		
REV	DATE	BY	CHK	DESCRIPTION	ECN #	APP PM
				DUAL BARREL LUG TYPE DC CUSTOMER DRAWING		
		DRAWN BY		CHK'D	SCALE	DRAWING NO.
		JHNU			N/A	C41550

X-ON Electronics

Largest Supplier of Electrical and Electronic Components

Click to view similar products for [Terminals](#) category:

Click to view products by [Panduit](#) manufacturer:

Other Similar products are found below :

[HT-13-10](#) [71M-250-32-NB](#) [01-2065-1-0216](#) [00581P0075](#) [M10-10RX](#) [M10BCK](#) [60205-1](#) [604200-1](#) [60598-1-CUT-TAPE](#) [60617-1-C](#) [60873-1](#) [M14-516R/SK](#) [M14-6RSX](#) [M18-8FBX](#) [M18-8R/LX](#) [M18BCK](#) [61314-6-C](#) [61-S](#) [61-SN-A](#) [62-NBM-A](#) [63-S](#) [640179-1](#) [640917-2-CUT-TAPE](#) [6501550002](#) [66107-2-C](#) [696683-1](#) [696834-1](#) [696861-1](#) [696931-1](#) [696999-1](#) [M8-516RK](#) [M86700006](#) [MA250DMFMX-A](#) [701-2007](#) [701-2307](#) [701-7761-03](#) [70F-110-32-PB](#) [718-N-A](#) [71M-187-20-NBL](#) [71M-250-32-NBL](#) [72F-187-20-NBL](#) [72M-250-32-NBL](#) [7310](#) [73F-250-32](#) [73F-250-32-NL](#) [F14-10C](#) [F-1M](#) [751-250](#) [76650-5002](#) [76828-149](#)